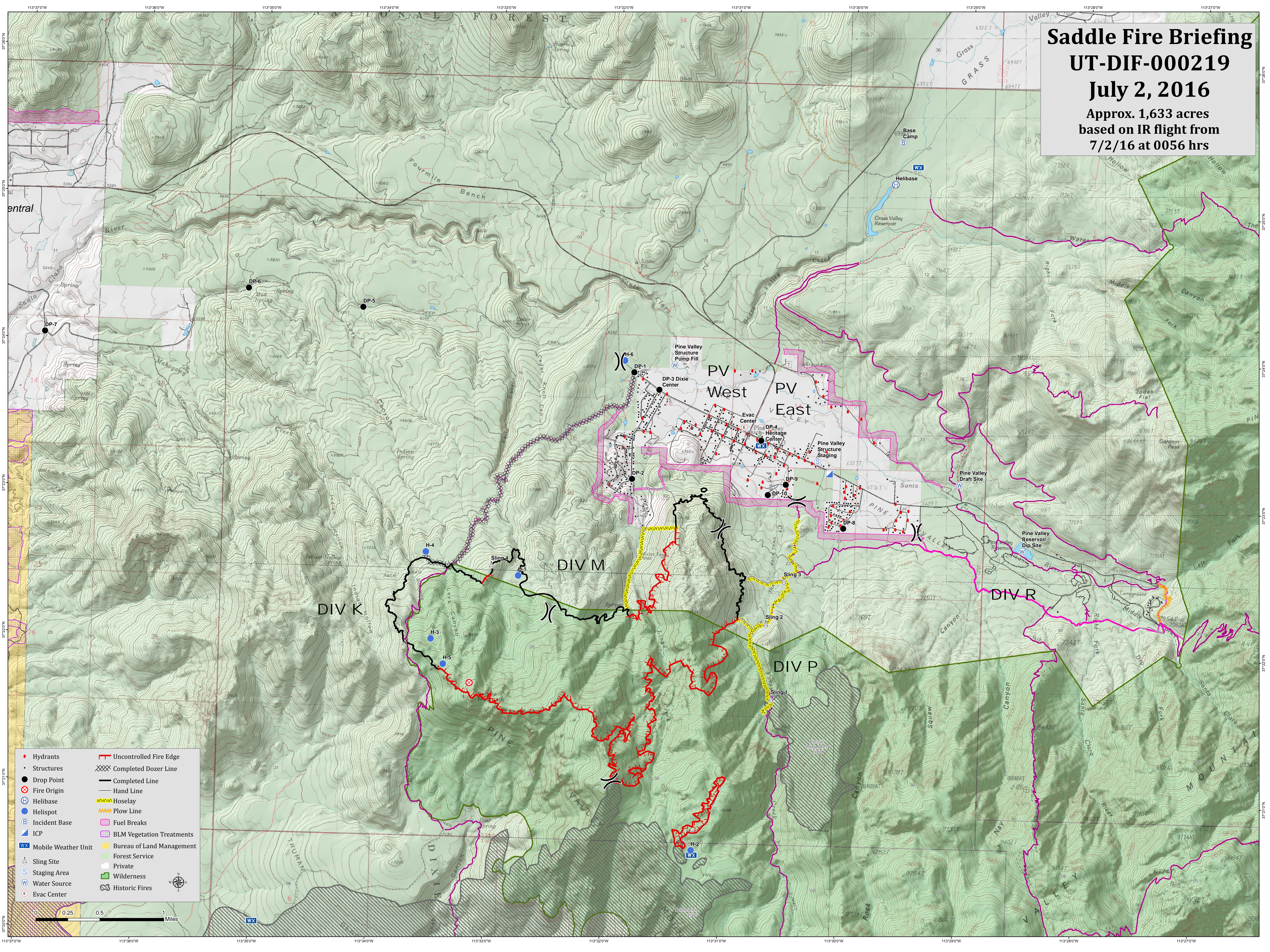


Saddle Fire Briefing

UT-DIF-000219

July 2, 2016

Approx. 1,633 acres
based on IR flight from
7/2/16 at 0056 hrs



- Hydrants
- Structures
- Drop Point
- ⊗ Fire Origin
- Ⓜ Helibase
- Ⓟ Helispot
- Ⓡ Incident Base
- Ⓜ Mobile Weather Unit
- Ⓜ Sling Site
- Ⓜ Staging Area
- Ⓜ Water Source
- Ⓜ Evac Center
- Uncontrolled Fire Edge
- Ⓜ Completed Dozer Line
- Completed Line
- Hand Line
- Ⓜ Hoselay
- Ⓜ Plow Line
- Ⓜ Fuel Breaks
- Ⓜ BLM Vegetation Treatments
- Ⓜ Bureau of Land Management
- Ⓜ Forest Service
- Ⓜ Private
- Ⓜ Wilderness
- Ⓜ Historic Fires

