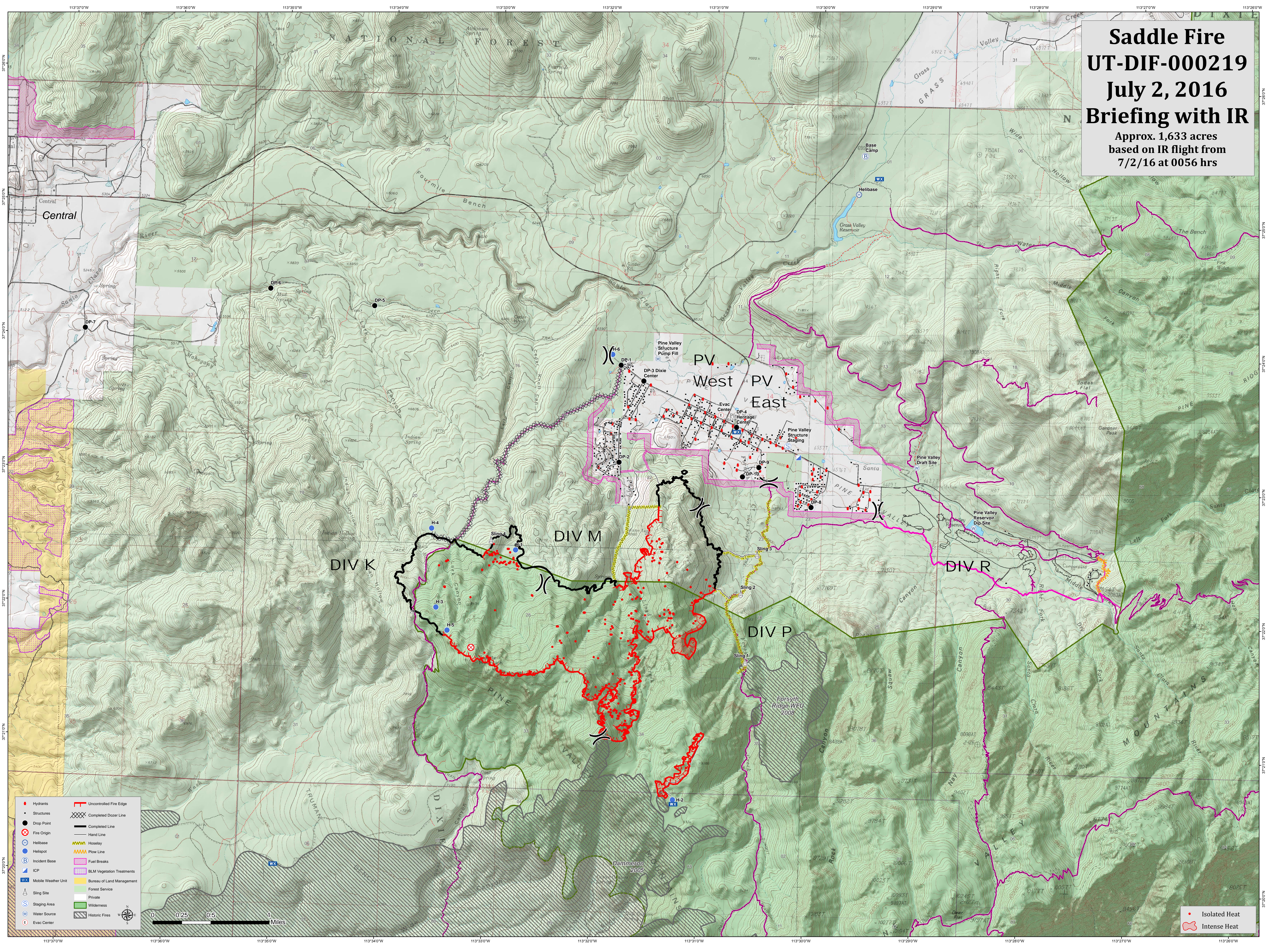


**Saddle Fire**  
**UT-DIF-000219**  
**July 2, 2016**  
**Briefing with IR**  
 Approx. 1,633 acres  
 based on IR flight from  
 7/2/16 at 0056 hrs



● Hydrants	— Uncontrolled Fire Edge
● Structures	⊗ Completed Dozer Line
● Drop Point	— Completed Line
⊗ Fire Origin	— Hand Line
Ⓛ Helibase	⚡ Hoselasy
Ⓛ Helispot	⚡ Plow Line
Ⓛ Incident Base	⚡ Fuel Breaks
Ⓛ ICP	⚡ BLM Vegetation Treatments
Ⓛ Mobile Weather Unit	⚡ Bureau of Land Management
Ⓛ Sling Site	⚡ Forest Service
Ⓛ Staging Area	⚡ Private
Ⓛ Water Source	⚡ Wilderness
Ⓛ Evac Center	⚡ Historic Fires



- Isolated Heat
- ⊗ Intense Heat