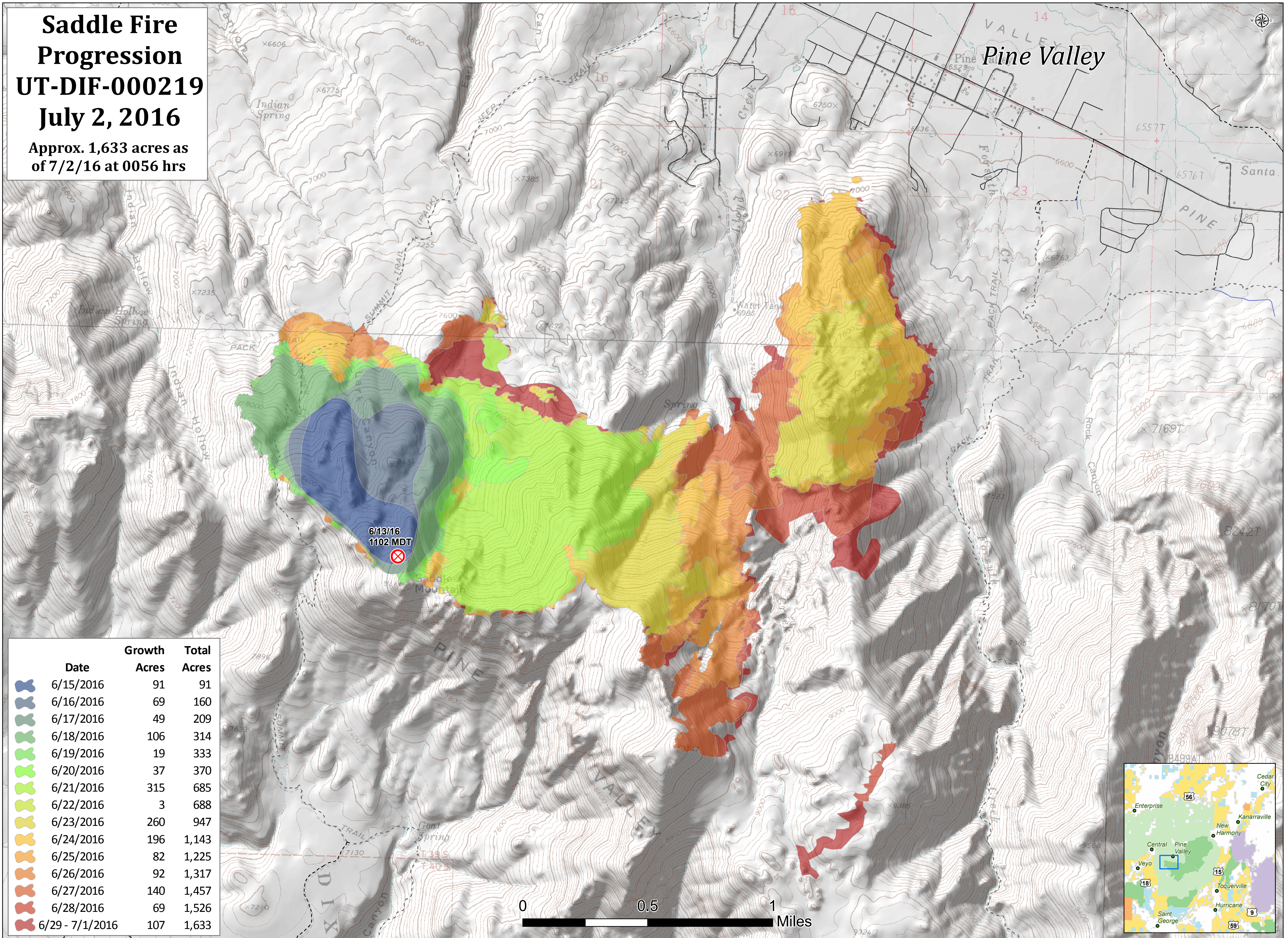


Saddle Fire Progression UT-DIF-000219 July 2, 2016

Approx. 1,633 acres as of 7/2/16 at 0056 hrs



Date	Growth Acres	Total Acres
6/15/2016	91	91
6/16/2016	69	160
6/17/2016	49	209
6/18/2016	106	314
6/19/2016	19	333
6/20/2016	37	370
6/21/2016	315	685
6/22/2016	3	688
6/23/2016	260	947
6/24/2016	196	1,143
6/25/2016	82	1,225
6/26/2016	92	1,317
6/27/2016	140	1,457
6/28/2016	69	1,526
6/29 - 7/1/2016	107	1,633

