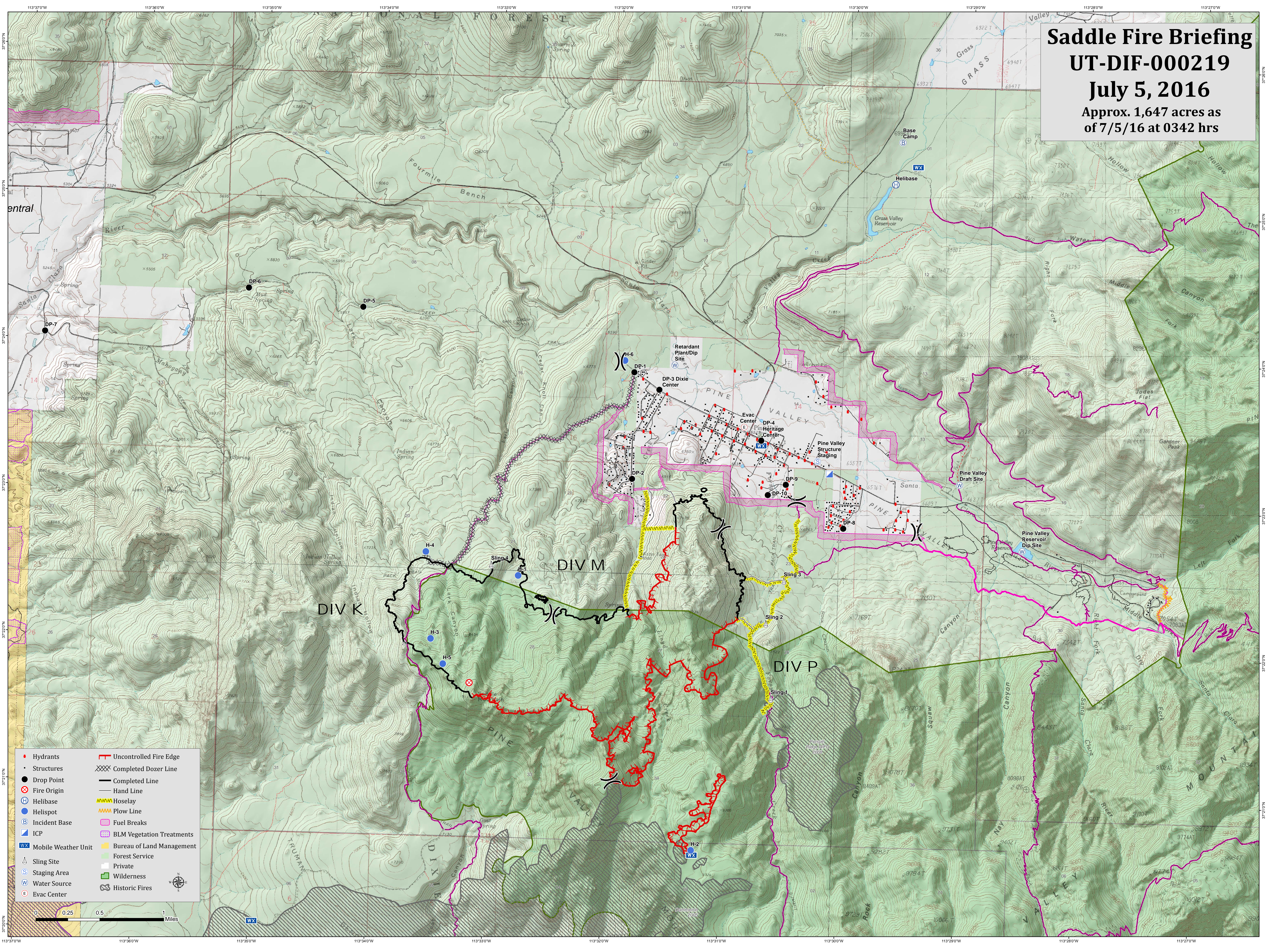


Saddle Fire Briefing

UT-DIF-000219

July 5, 2016

Approx. 1,647 acres as of 7/5/16 at 0342 hrs



- | | |
|-----------------------|-----------------------------|
| • Hydrants | — Uncontrolled Fire Edge |
| • Structures | XXXX Completed Dozer Line |
| ● Drop Point | — Completed Line |
| ⊗ Fire Origin | — Hand Line |
| Ⓜ Helibase | — Hoselay |
| ● Helispot | — Plow Line |
| Ⓟ Incident Base | — Fuel Breaks |
| Ⓜ ICP | — BLM Vegetation Treatments |
| Ⓜ Mobile Weather Unit | — Bureau of Land Management |
| Ⓜ Sling Site | — Forest Service |
| Ⓜ Staging Area | — Private |
| Ⓜ Water Source | — Wilderness |
| Ⓜ Evac Center | — Historic Fires |

