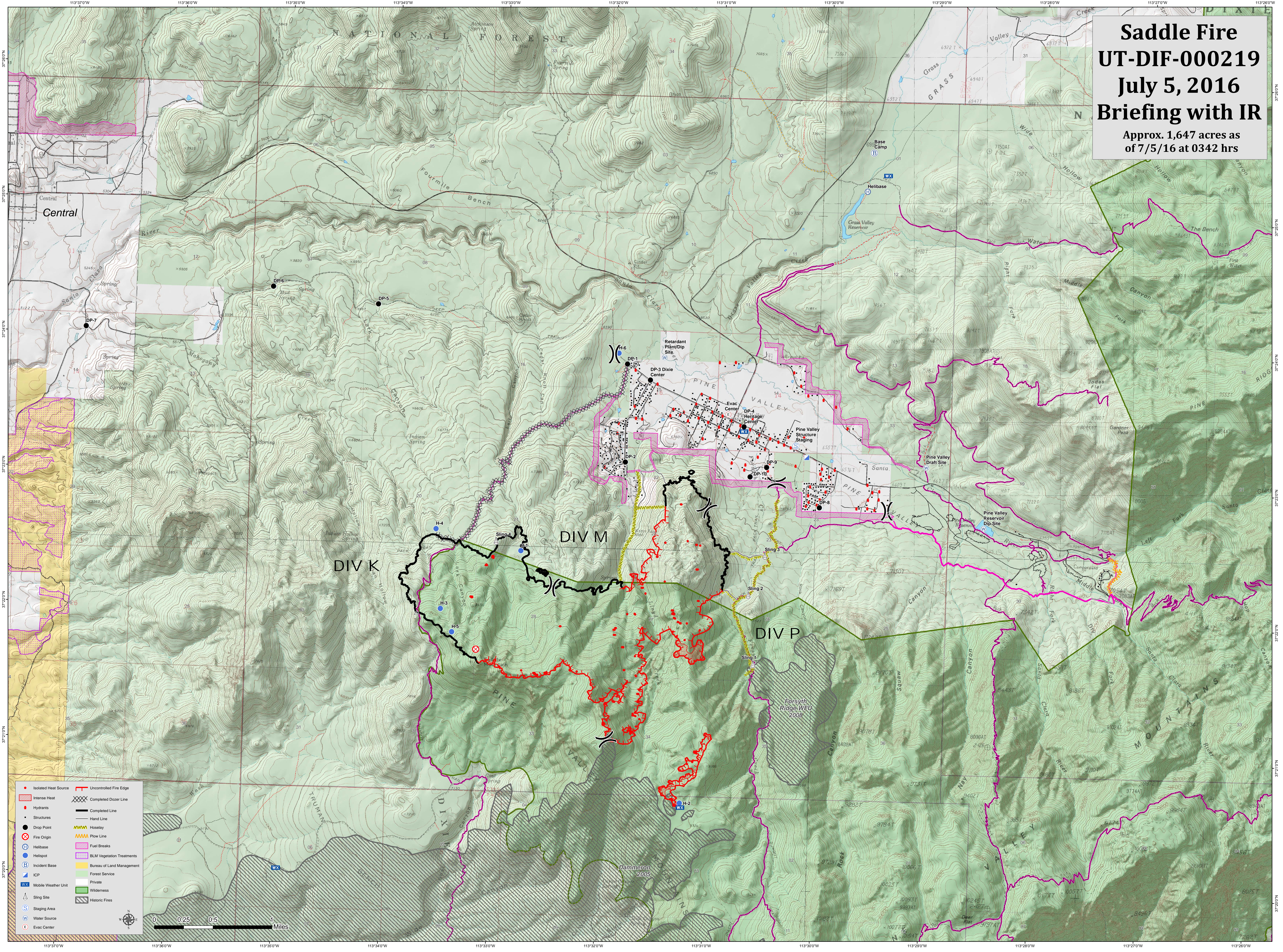


Saddle Fire
UT-DIF-000219
July 5, 2016
Briefing with IR
 Approx. 1,647 acres as
 of 7/5/16 at 0342 hrs



- Isolated Heat Source
- Intense Heat
- Hydrants
- Structures
- Drop Point
- ⊗ Fire Origin
- Ⓜ Helibase
- Ⓜ Helispot
- Ⓜ Incident Base
- Ⓜ ICP
- Ⓜ Mobile Weather Unit
- Ⓜ Sling Site
- Ⓜ Staging Area
- Ⓜ Water Source
- Ⓜ Evac Center
- Uncontrolled Fire Edge
- Ⓜ Completed Dozer Line
- Completed Line
- Hand Line
- Ⓜ Hoselay
- Ⓜ Flow Line
- Ⓜ Fuel Breaks
- Ⓜ BLM Vegetation Treatments
- Ⓜ Bureau of Land Management
- Ⓜ Forest Service
- Ⓜ Private
- Ⓜ Wilderness
- Ⓜ Historic Fires

