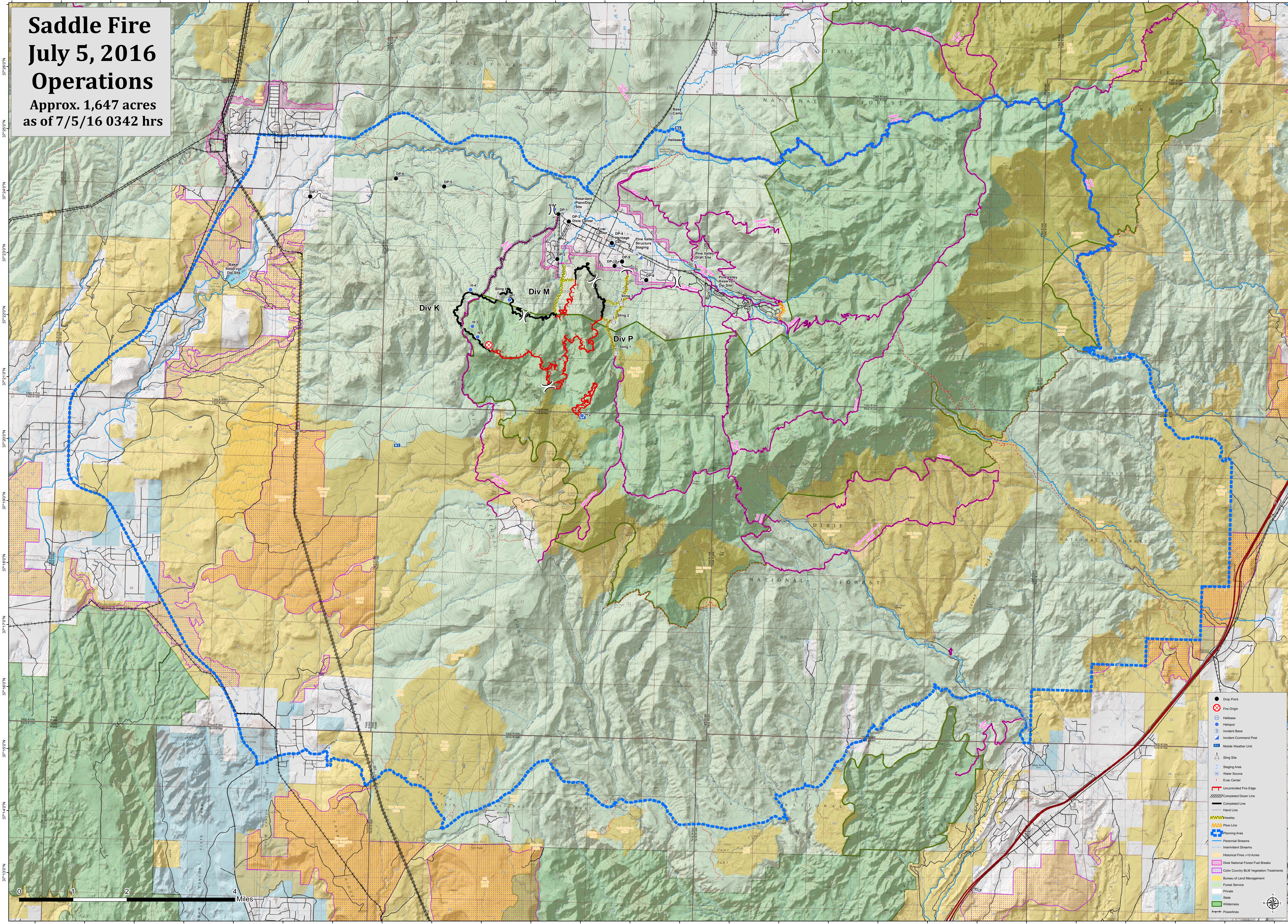


Saddle Fire July 5, 2016 Operations

Approx. 1,647 acres
as of 7/5/16 0342 hrs



- Drop Point
- ⊗ Fire Origin
- ⊕ Helibase
- ⊙ Helipod
- ⊙ Incident Base
- ⊙ Incident Command Post
- ⊙ Mobile Weather Unit
- ⊙ Slng Site
- ⊙ Staging Area
- ⊙ Water Source
- ⊙ Evac Center
- Uncontrolled Fire Edge
- - - Completed Fire Line
- Hand Line
- Hose Line
- Plow Line
- Planning Area
- Perennial Streams
- Intermittent Streams
- Historical Fires > 10 Acres
- Dixie National Forest Fuel Breaks
- Color Country BLM Vegetation Treatments
- Bureau of Land Management
- Bureau of Land Management
- Forest Service
- Private
- State
- Wilderness
- Powerlines