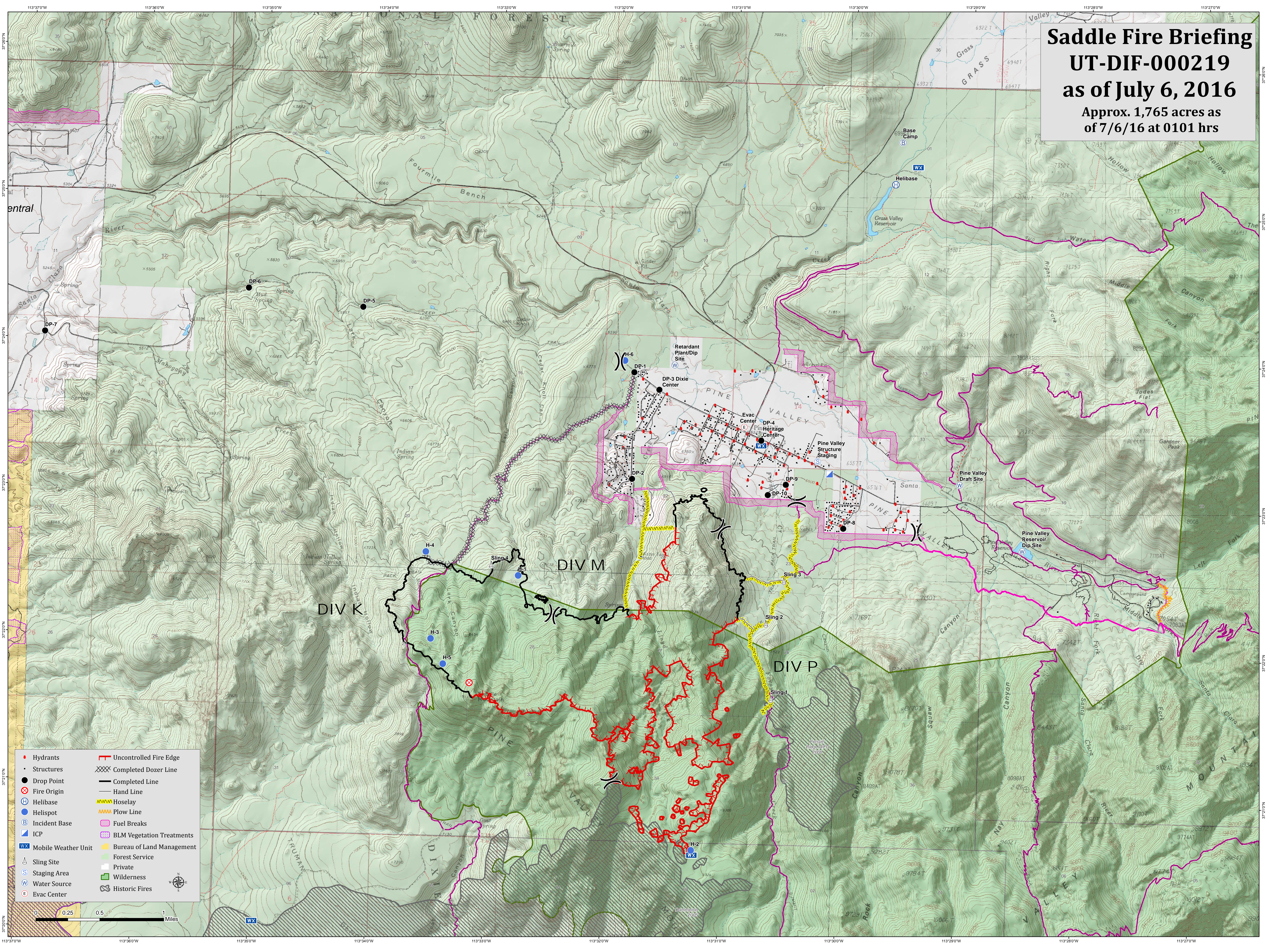


Saddle Fire Briefing

UT-DIF-000219

as of July 6, 2016

Approx. 1,765 acres as of 7/6/16 at 0101 hrs



- | | |
|-----------------------|-----------------------------|
| • Hydrants | — Uncontrolled Fire Edge |
| • Structures | XXXX Completed Dozer Line |
| ● Drop Point | — Completed Line |
| ⊗ Fire Origin | — Hand Line |
| ⊕ Helibase | ▨ Hoselay |
| ⊙ Helispot | ▨ Plow Line |
| ⓑ Incident Base | ▨ Fuel Breaks |
| Ⓜ ICP | ▨ BLM Vegetation Treatments |
| Ⓜ Mobile Weather Unit | ▨ Bureau of Land Management |
| Ⓜ Sling Site | ▨ Forest Service |
| Ⓜ Staging Area | ▨ Private |
| Ⓜ Water Source | ▨ Wilderness |
| Ⓜ Evac Center | ▨ Historic Fires |

