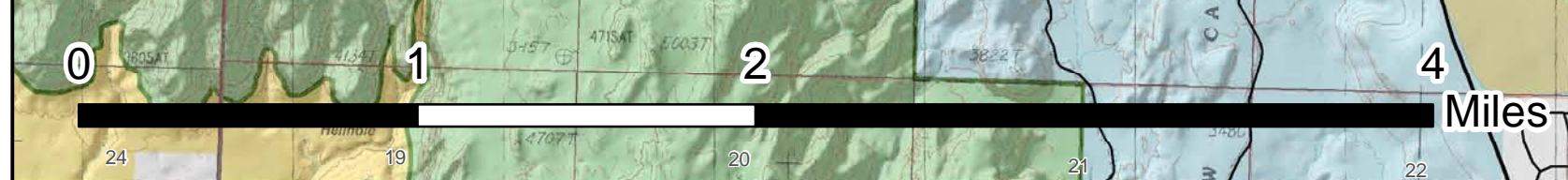
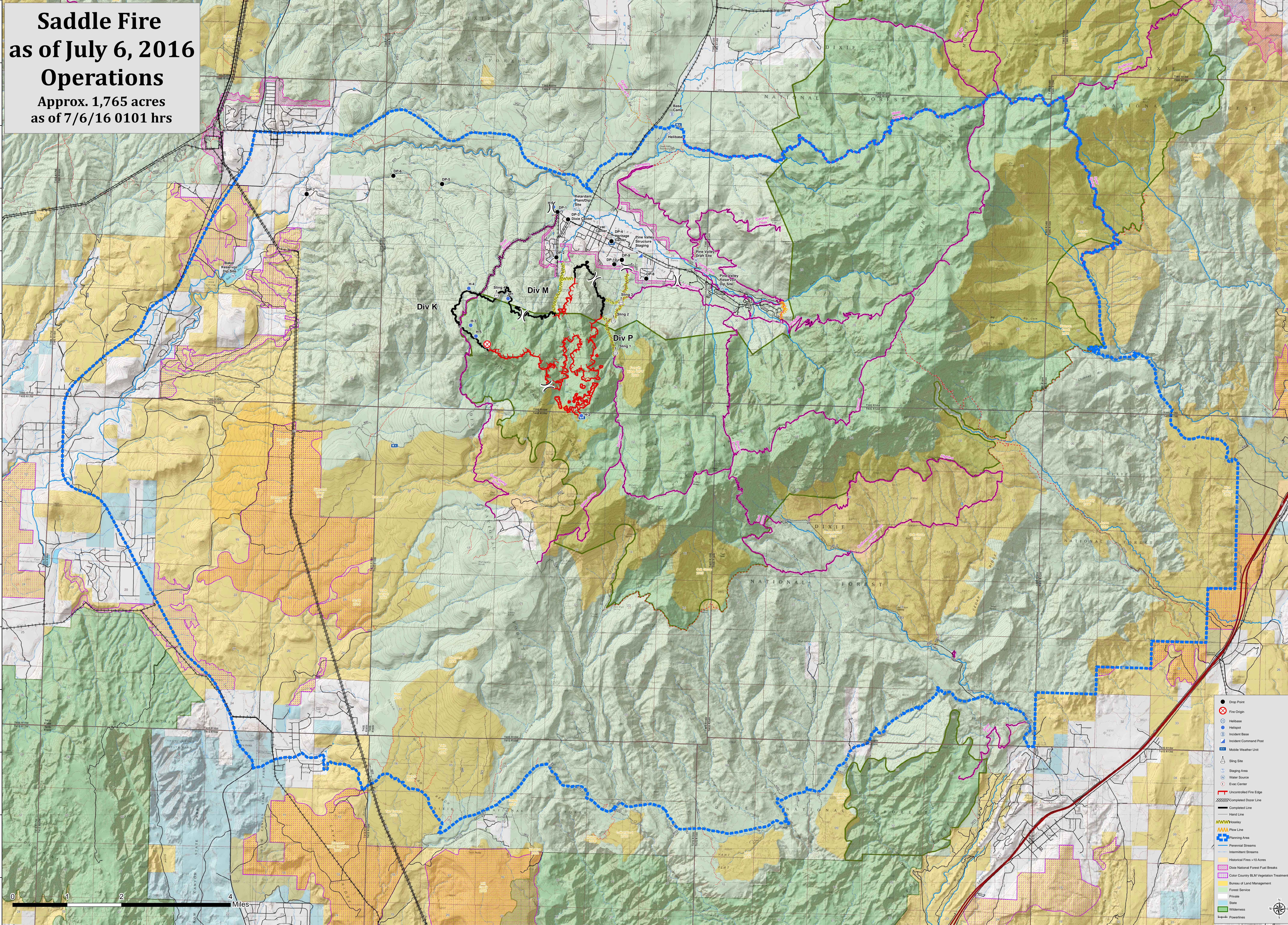


Saddle Fire as of July 6, 2016 Operations

Approx. 1,765 acres
as of 7/6/16 0101 hrs



- Drop Point
- ⊗ Fire Origin
- ⊕ Helibase
- ⊕ Helipod
- ⊕ Incident Base
- ⊕ Incident Command Post
- ⊕ Mobile Weather Unit
- ⊕ Staging Area
- ⊕ Water Source
- ⊕ Evac Center
- Uncontrolled Fire Edge
- Completed Fire Line
- Completed Dozer Line
- Hand Line
- Roadway
- Plow Line
- Planning Area
- Perennial Streams
- Intermittent Streams
- Historical Fires > 10 Acres
- Dixie National Forest Fuel Breaks
- Color Country BLM Vegetation Treatments
- Bureau of Land Management
- Forest Service
- Private
- State
- Wilderness
- Powerlines

