

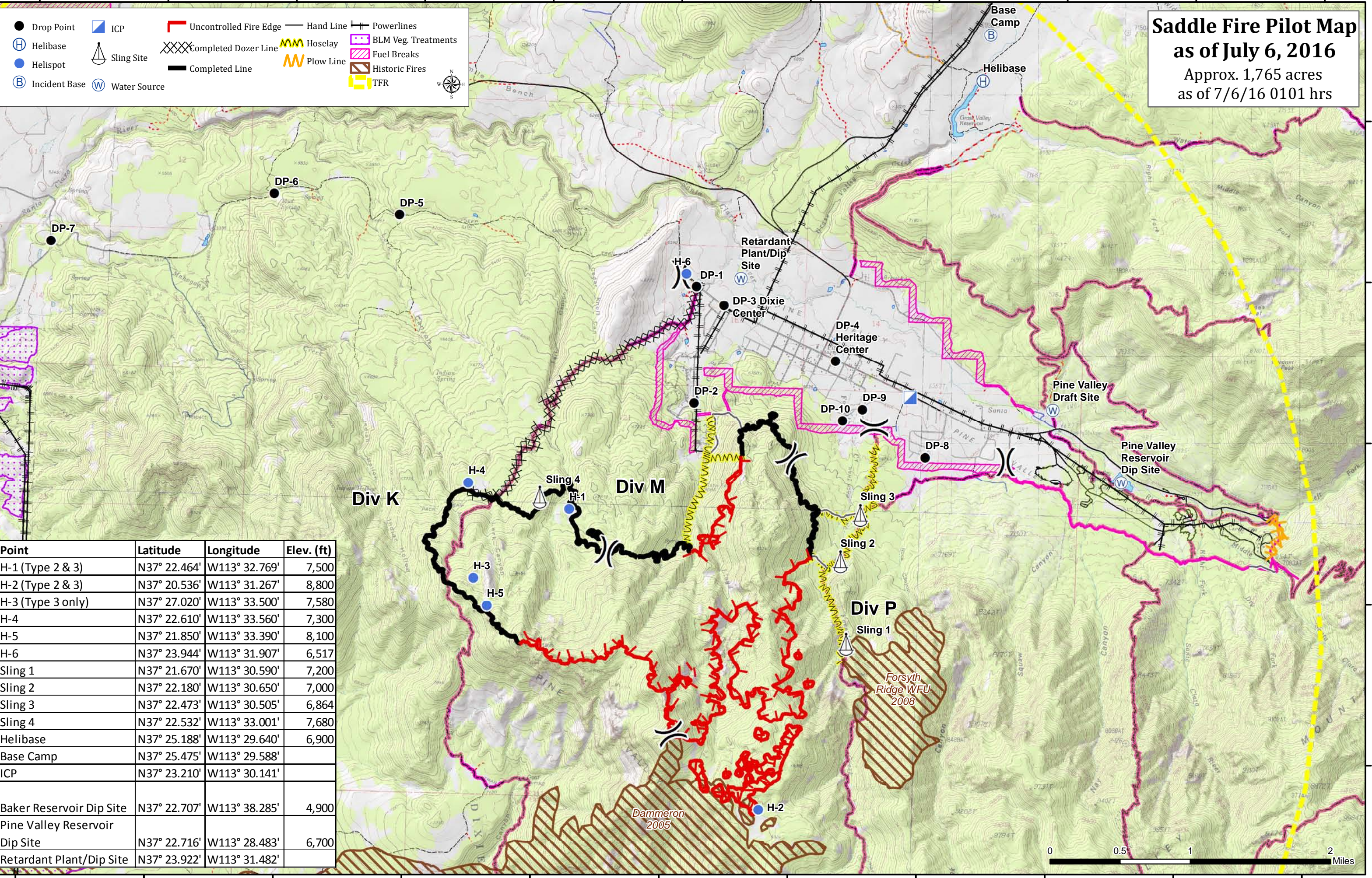
Saddle Fire Pilot Map

as of July 6, 2016

Approx. 1,765 acres
as of 7/6/16 0101 hrs

● Drop Point	■ ICP	— Uncontrolled Fire Edge	— Hand Line	— Powerlines
⊕ Helibase	⊕ Sling Site	XXXX Completed Dozer Line	— Hoselay	▨ BLM Veg. Treatments
⊙ Helispot	⊙ Incident Base	— Completed Line	— Plow Line	▨ Fuel Breaks
⊙ Water Source				▨ Historic Fires
				▨ TFR

Point	Latitude	Longitude	Elev. (ft)
H-1 (Type 2 & 3)	N37° 22.464'	W113° 32.769'	7,500
H-2 (Type 2 & 3)	N37° 20.536'	W113° 31.267'	8,800
H-3 (Type 3 only)	N37° 27.020'	W113° 33.500'	7,580
H-4	N37° 22.610'	W113° 33.560'	7,300
H-5	N37° 21.850'	W113° 33.390'	8,100
H-6	N37° 23.944'	W113° 31.907'	6,517
Sling 1	N37° 21.670'	W113° 30.590'	7,200
Sling 2	N37° 22.180'	W113° 30.650'	7,000
Sling 3	N37° 22.473'	W113° 30.505'	6,864
Sling 4	N37° 22.532'	W113° 33.001'	7,680
Helibase	N37° 25.188'	W113° 29.640'	6,900
Base Camp	N37° 25.475'	W113° 29.588'	
ICP	N37° 23.210'	W113° 30.141'	
Baker Reservoir Dip Site	N37° 22.707'	W113° 38.285'	4,900
Pine Valley Reservoir Dip Site	N37° 22.716'	W113° 28.483'	6,700
Retardant Plant/Dip Site	N37° 23.922'	W113° 31.482'	



113°37'0"W 113°36'0"W 113°35'0"W 113°34'0"W 113°33'0"W 113°32'0"W 113°31'0"W 113°30'0"W 113°29'0"W 113°28'0"W 113°27'0"W

37°25'0"N 37°24'0"N 37°23'0"N 37°22'0"N 37°21'0"N