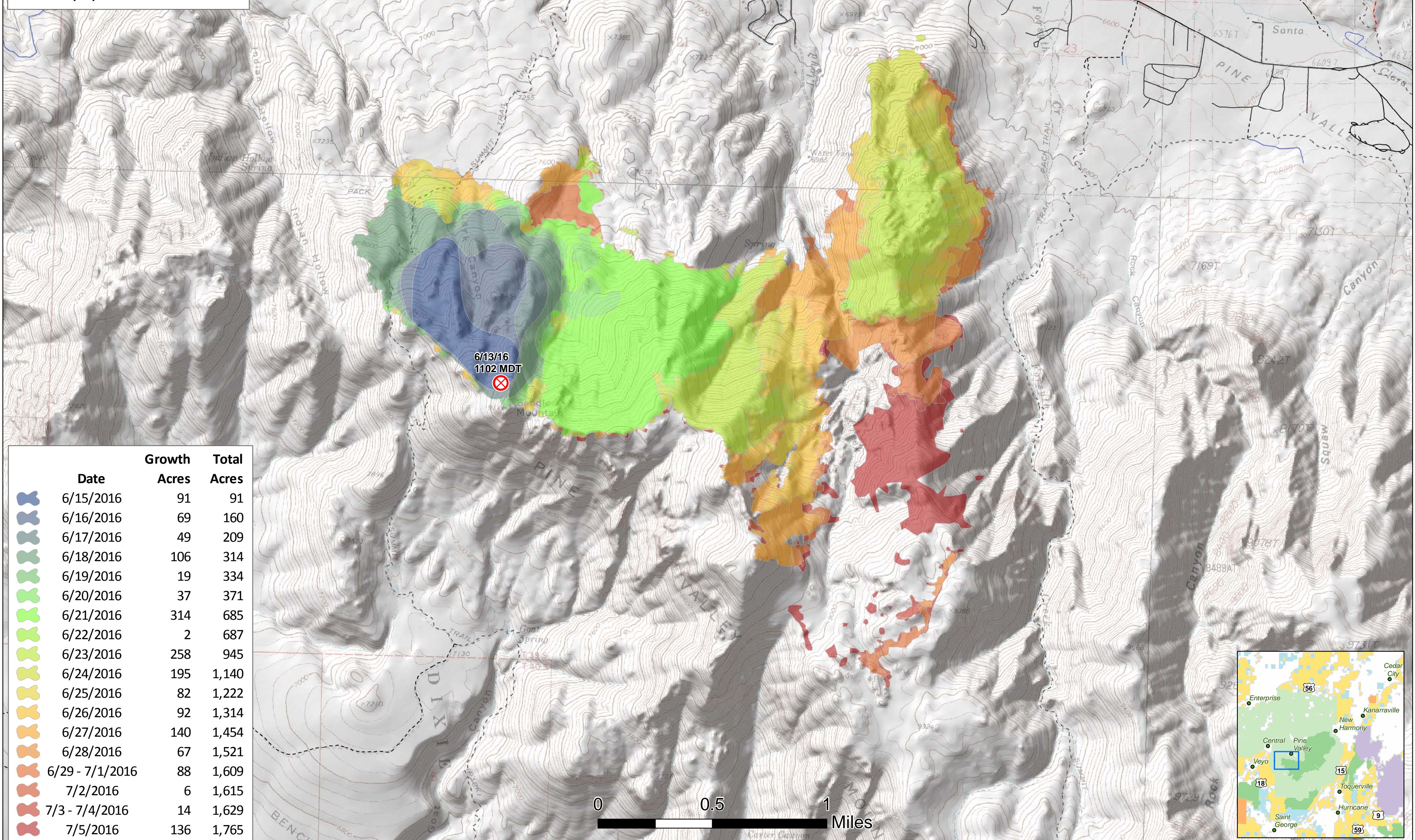


Saddle Fire Progression UT-DIF-000219 as of July 6, 2016

Approx. 1,765 acres as
of 7/6/16 at 0101 hrs



	Date	Growth Acres	Total Acres
	6/15/2016	91	91
	6/16/2016	69	160
	6/17/2016	49	209
	6/18/2016	106	314
	6/19/2016	19	334
	6/20/2016	37	371
	6/21/2016	314	685
	6/22/2016	2	687
	6/23/2016	258	945
	6/24/2016	195	1,140
	6/25/2016	82	1,222
	6/26/2016	92	1,314
	6/27/2016	140	1,454
	6/28/2016	67	1,521
	6/29 - 7/1/2016	88	1,609
	7/2/2016	6	1,615
	7/3 - 7/4/2016	14	1,629
	7/5/2016	136	1,765

