

113°34'W

113°33'W

113°32'W

113°31'W

113°30'W

113°29'W

Saddle Fire
 # UT-DIF-219
 Heat Acres: 1,765
 Infrared Interpretation
 Imagery Date:
 07/06/2016 1001 hr



1:24,000

37°23'N

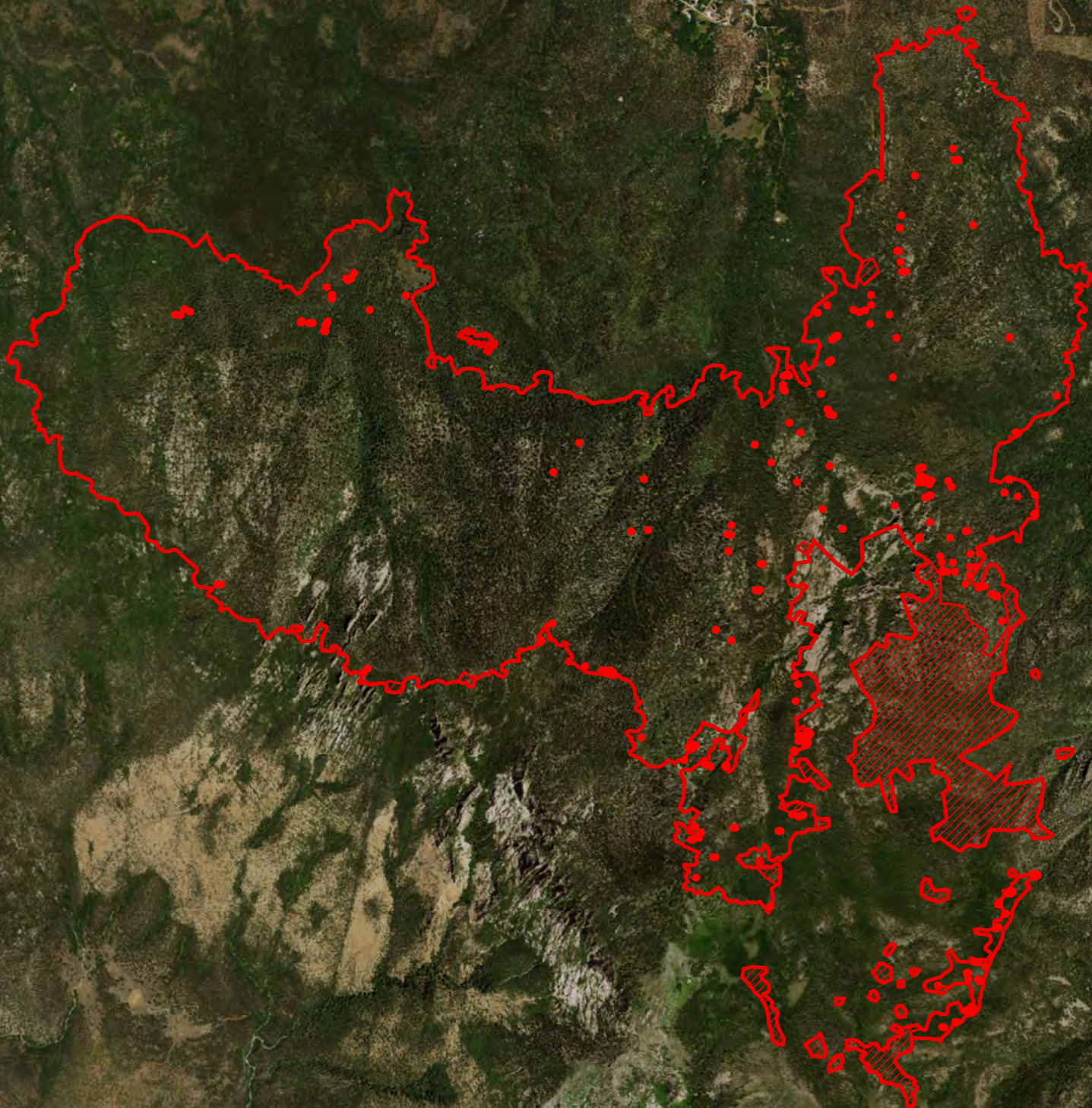
37°23'N




37°22'N

37°22'N

37°21'N

37°21'N



-  Heat Perimeter
 -  Intense Heat Areas
 -  Isolated Heat Sources
- NAD 1983 UTM Zone 12N

IRIN: Kyle Felker
 Map produced:
 7/6/2016 0126 hrs

0 1,000 2,000 4,000 Feet



113°34'W

113°33'W

113°32'W

113°31'W

113°30'W

113°29'W

Source: Esri, DigitalGlobe, GeoEye, Earthstar Geographics, CNES/Airbus DS, USDA, USGS, AEX, Get Community