

113°35'W

113°34'W

113°33'W

113°32'W

113°31'W

113°30'W

113°29'W

**Saddle Fire**  
 # UT-DIF-219  
 Heat Acres: 1,939  
 Infrared Interpretation  
 Imagery Date:  
 07/06/2016 2134 hr



1:24,000

37°23'N

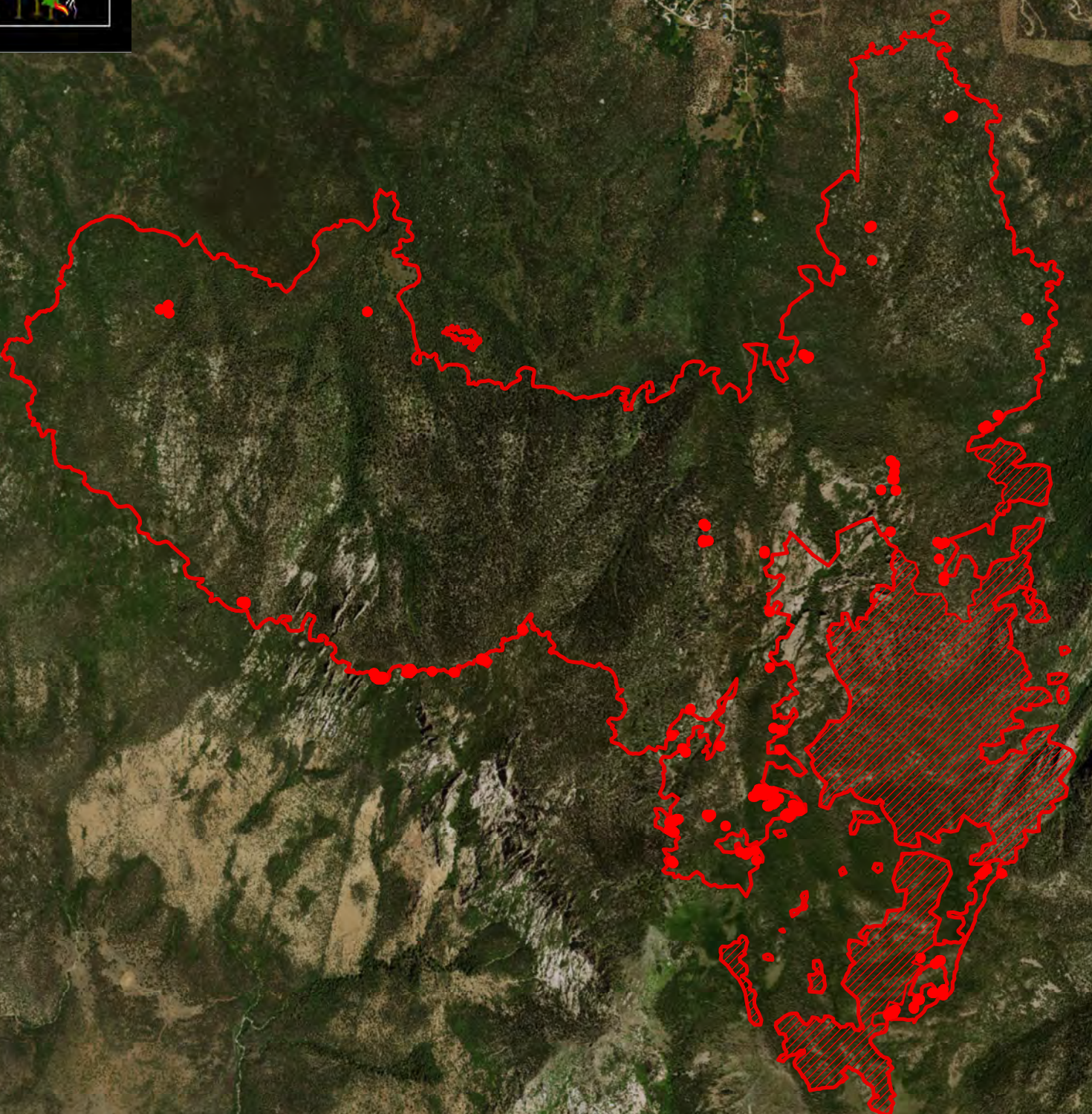
37°22'N




37°21'N

37°23'N

37°22'N

37°21'N



-  Heat Perimeter
-  Intense Heat Areas
-  Isolated Heat Sources

NAD 1983 UTM Zone 12N

IRIN: Kyle Felker  
 Map produced:  
 7/6/2016 2242 hrs



Source: Esri, DigitalGlobe, GeoEye, Earthstar Geographics, CNES/Airbus DS, USDA, USGS, AEX, GetCommunity

113°35'W

113°34'W

113°33'W

113°32'W

113°31'W

113°30'W

113°29'W