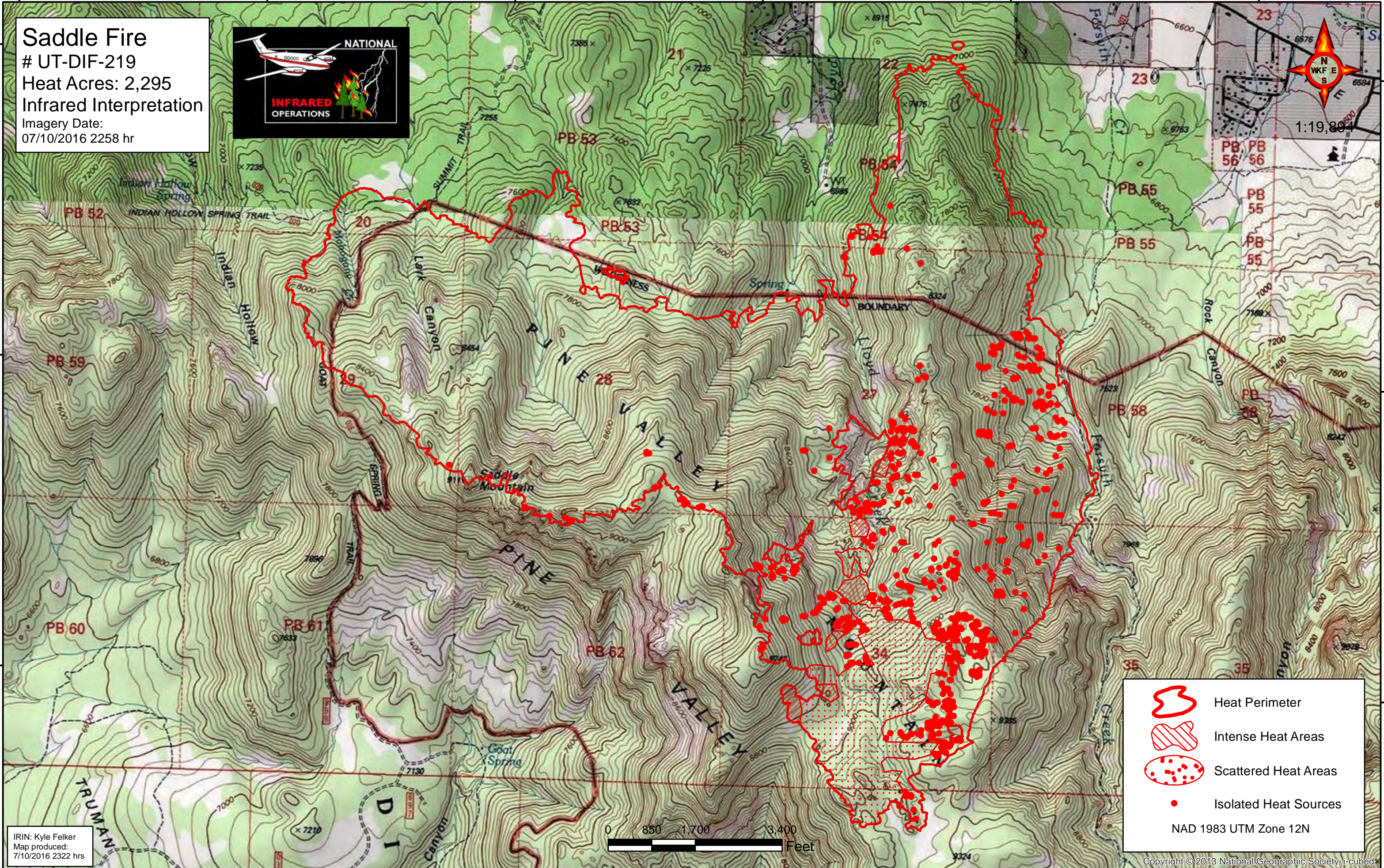
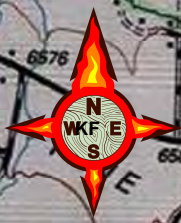






113°35'W 113°34'W 113°33'W 113°32'W 113°31'W 113°30'W



Saddle Fire
UT-DIF-219
Heat Acres: 2,295
Infrared Interpretation
Imagery Date:
07/10/2016 2258 hr



1:19,894

-  Heat Perimeter
 -  Intense Heat Areas
 -  Scattered Heat Areas
 -  Isolated Heat Sources
- NAD 1983 UTM Zone 12N



IRIN: Kyle Felker
Map produced:
7/10/2016 2322 hrs

Copyright © 2013 National Geographic Society, i-cubed

113°34'W 113°33'W 113°32'W 113°31'W 113°30'W