

113°35'W 113°34'W 113°33'W 113°32'W 113°31'W 113°30'W 113°29'W

Saddle Fire
UT-DIF-219
Heat Acres: 2,297
Infrared Interpretation
Imagery Date:
07/12/2016 2335 hr



1:24,000

37°23'N

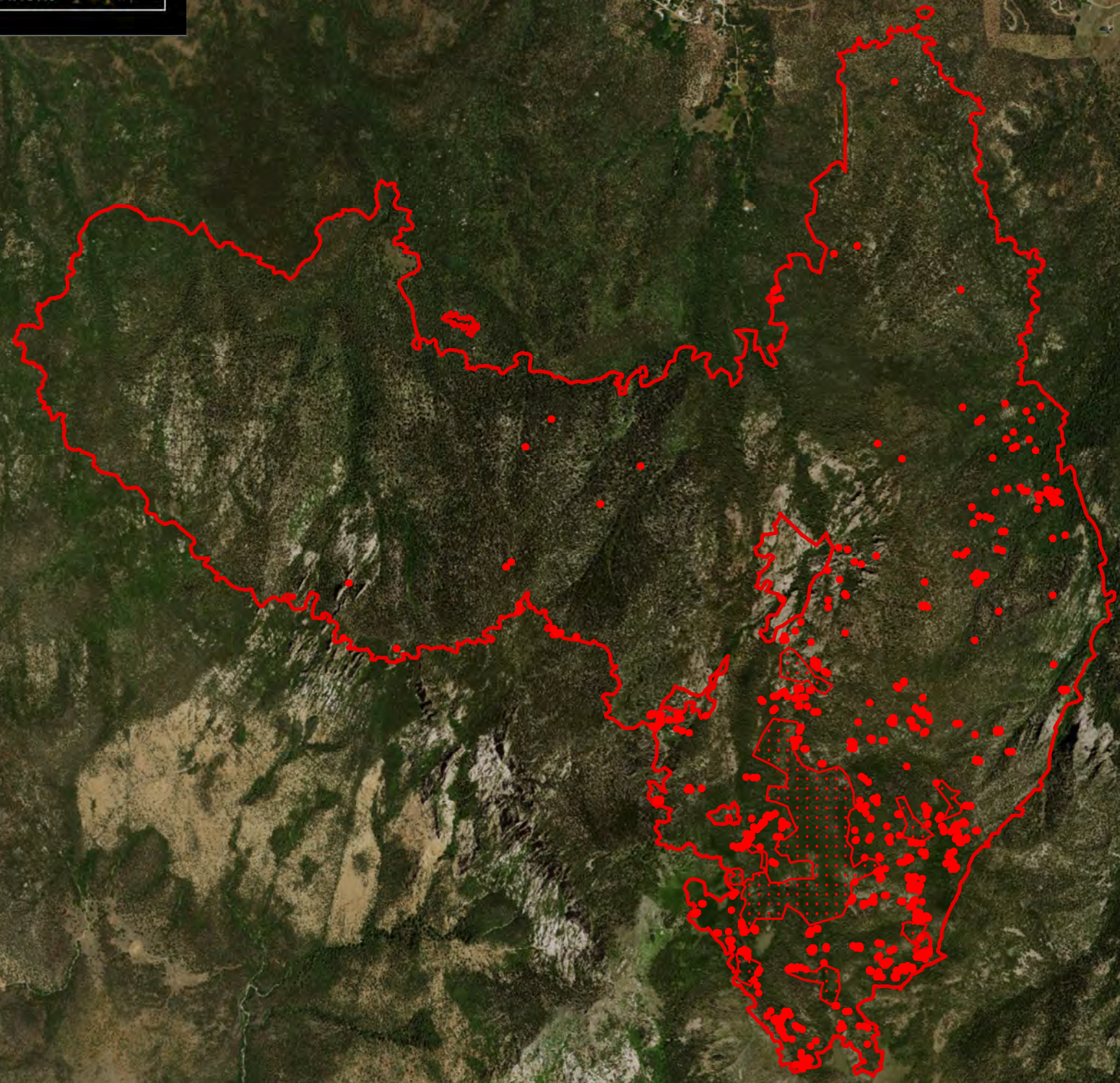
37°22'N





37°21'N

37°23'N

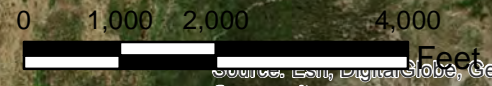
37°22'N

37°21'N



-  Heat Perimeter
-  Intense Heat Areas
-  Scattered Heat Areas
-  Isolated Heat Sources

NAD 1983 UTM Zone 12N



IRIN: Kyle Felker
Map produced:
7/12/2016 2346 hrs

113°35'W 113°34'W 113°33'W 113°32'W 113°31'W 113°30'W 113°29'W