

113°35'W

113°34'W

113°33'W

113°32'W

113°31'W

113°30'W

**Saddle Fire**  
 # UT-DIF-219  
 Heat Acres: 2,298  
 Infrared Interpretation  
 Imagery Date:  
 07/15/2016 2231 hr



1:24,000

37°23'N

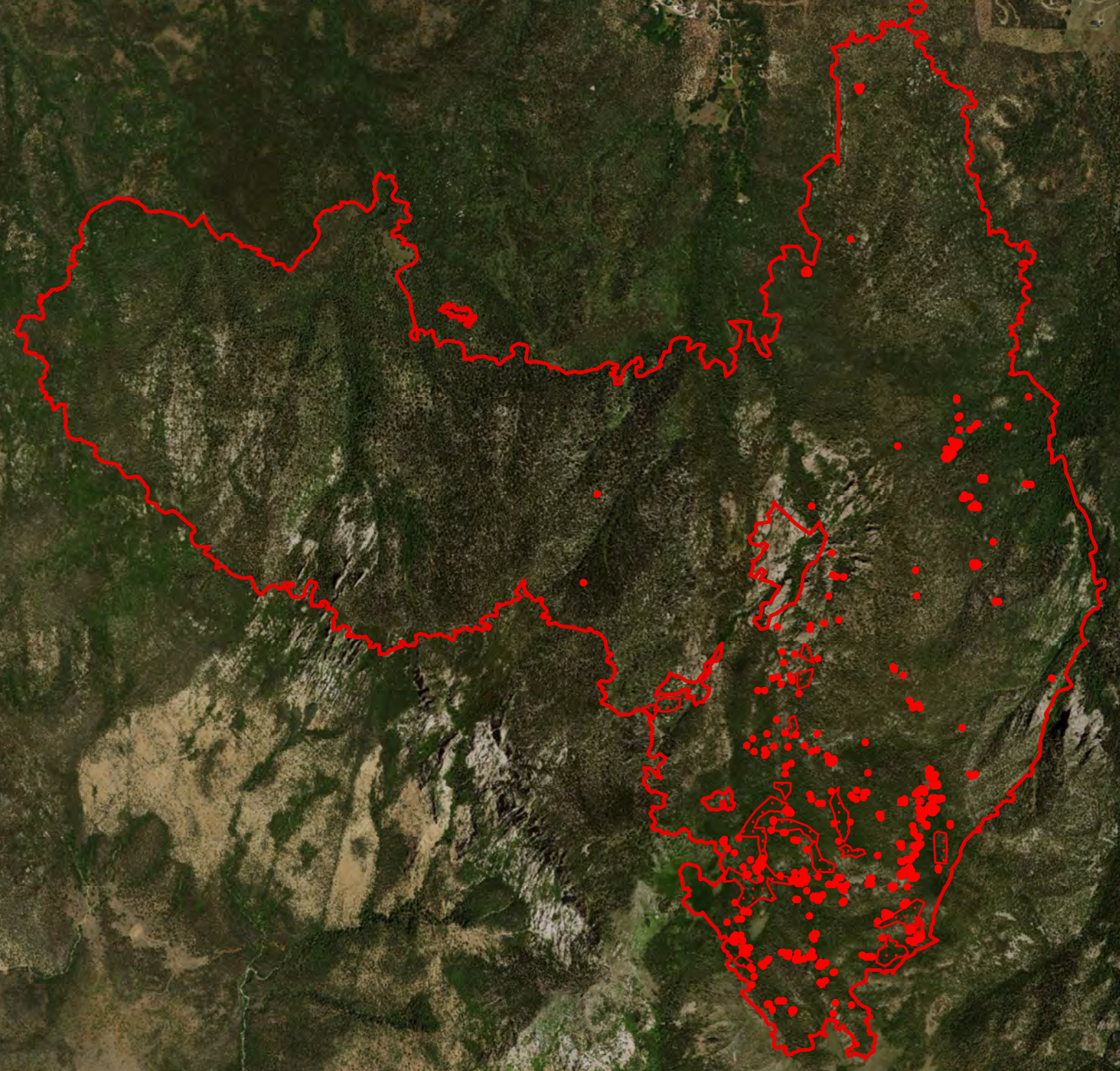
37°22'N




37°21'N

37°23'N

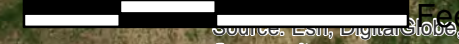
37°22'N

37°21'N



-  Heat Perimeter
  -  Scattered Heat Areas
  -  Isolated Heat Sources
- NAD 1983 UTM Zone 12N

0 1,000 2,000 4,000 Feet



IRIN: Kyle Felker  
 Map produced:  
 7/15/2016 2346 hrs

113°35'W

113°34'W

113°33'W

113°32'W

113°31'W

113°30'W

Source: Esri, DigitalGlobe, GeoEye, Earthstar Geographics, CNES/Airbus DS, USDA, USGS, AEX, Getacommunity