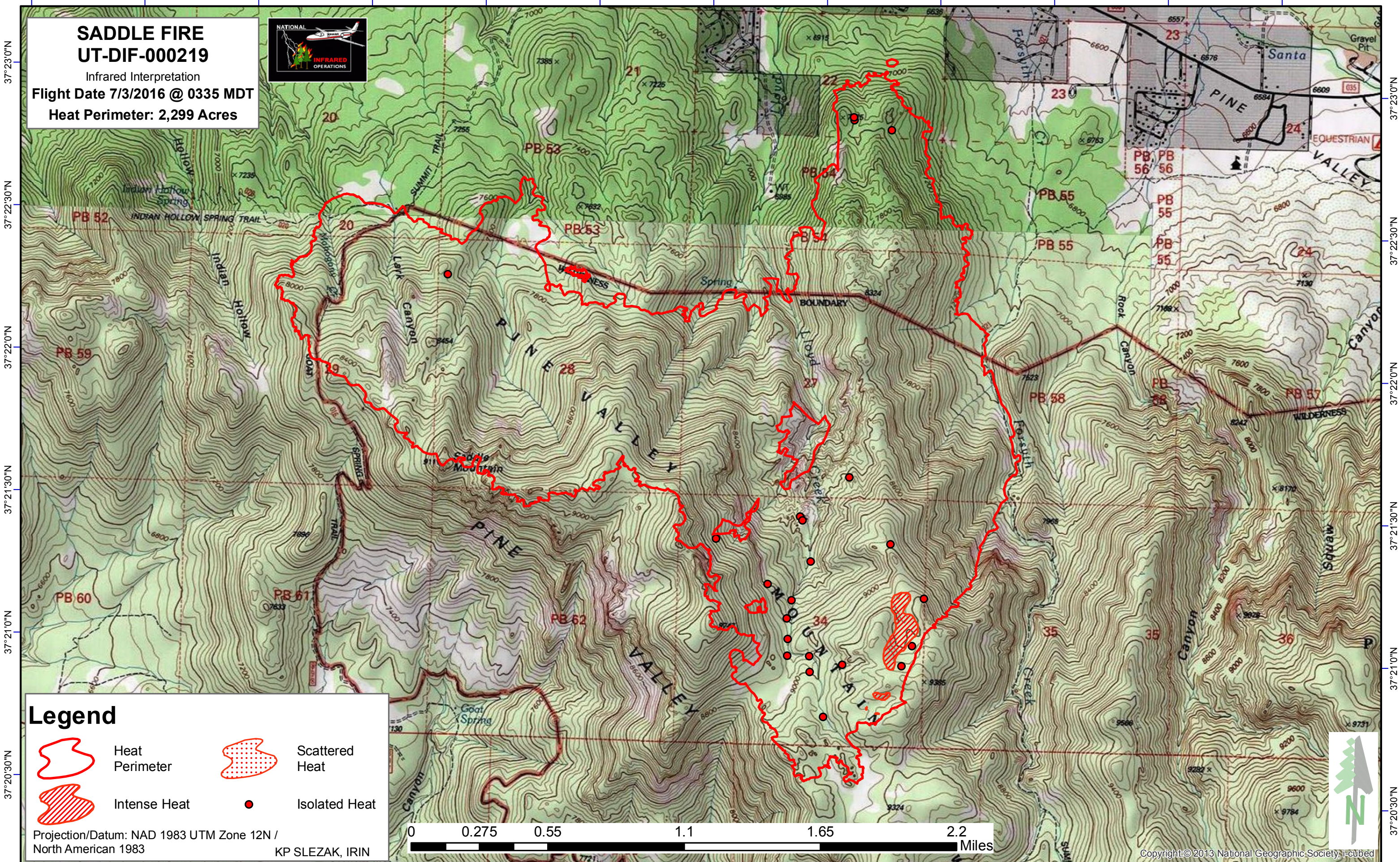






113°35'0"W 113°34'30"W 113°34'0"W 113°33'30"W 113°33'0"W 113°32'30"W 113°32'0"W 113°31'30"W 113°31'0"W 113°30'30"W 113°30'0"W 113°29'30"W



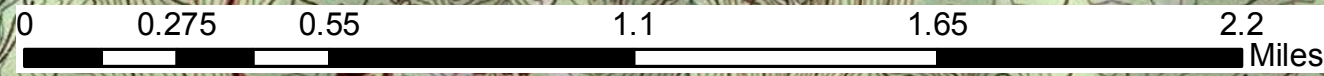
SADDLE FIRE
UT-DIF-000219
Infrared Interpretation
Flight Date 7/3/2016 @ 0335 MDT
Heat Perimeter: 2,299 Acres



Legend

-  Heat Perimeter
-  Intense Heat
-  Scattered Heat
-  Isolated Heat

Projection/Datum: NAD 1983 UTM Zone 12N / North American 1983
KP SLEZAK, IRIN



Copyright © 2013 National Geographic Society, i-cubed

113°34'30"W 113°34'0"W 113°33'30"W 113°33'0"W 113°32'30"W 113°32'0"W 113°31'30"W 113°31'0"W 113°30'30"W 113°30'0"W 113°29'30"W 113°29'0"W

37°23'0"N
37°22'30"N
37°22'0"N
37°21'30"N
37°21'0"N
37°20'30"N

37°23'0"N
37°22'30"N
37°22'0"N
37°21'30"N
37°21'0"N
37°20'30"N