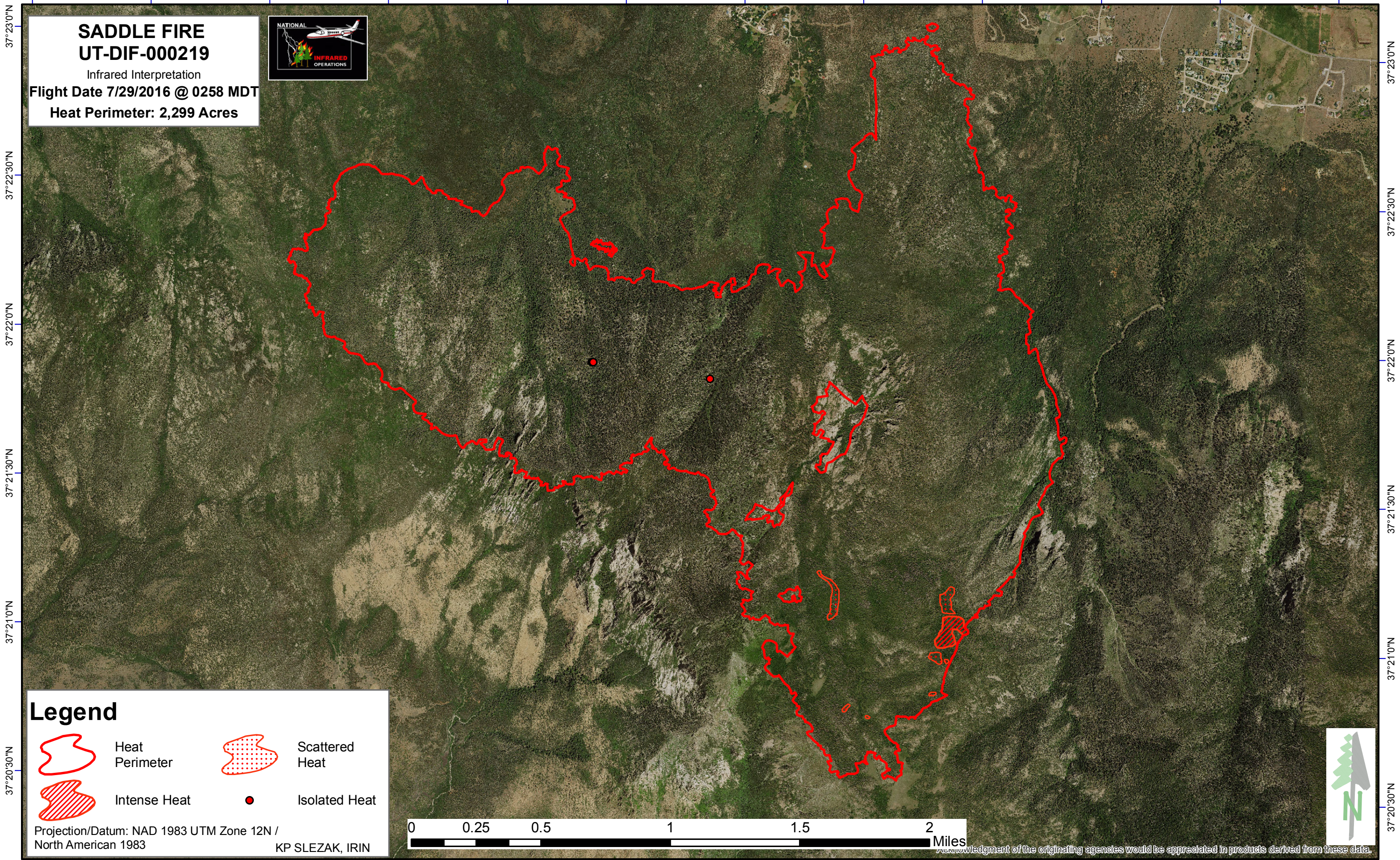



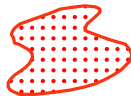


113°35'0"W 113°34'30"W 113°34'0"W 113°33'30"W 113°33'0"W 113°32'30"W 113°32'0"W 113°31'30"W 113°31'0"W 113°30'30"W 113°30'0"W 113°29'30"W



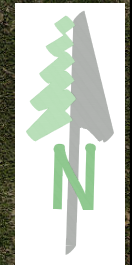
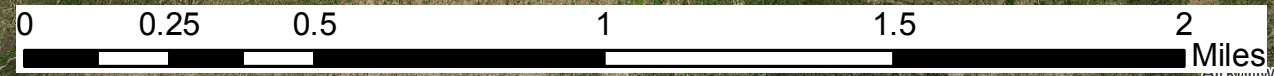
SADDLE FIRE
UT-DIF-000219
Infrared Interpretation
Flight Date 7/29/2016 @ 0258 MDT
Heat Perimeter: 2,299 Acres



Legend

-  Heat Perimeter
-  Scattered Heat
-  Intense Heat
-  Isolated Heat

Projection/Datum: NAD 1983 UTM Zone 12N / North American 1983
KP SLEZAK, IRIN



Acknowledgment of the originating agencies would be appreciated in products derived from these data.

113°34'30"W 113°34'0"W 113°33'30"W 113°33'0"W 113°32'30"W 113°32'0"W 113°31'30"W 113°31'0"W 113°30'30"W 113°30'0"W 113°29'30"W