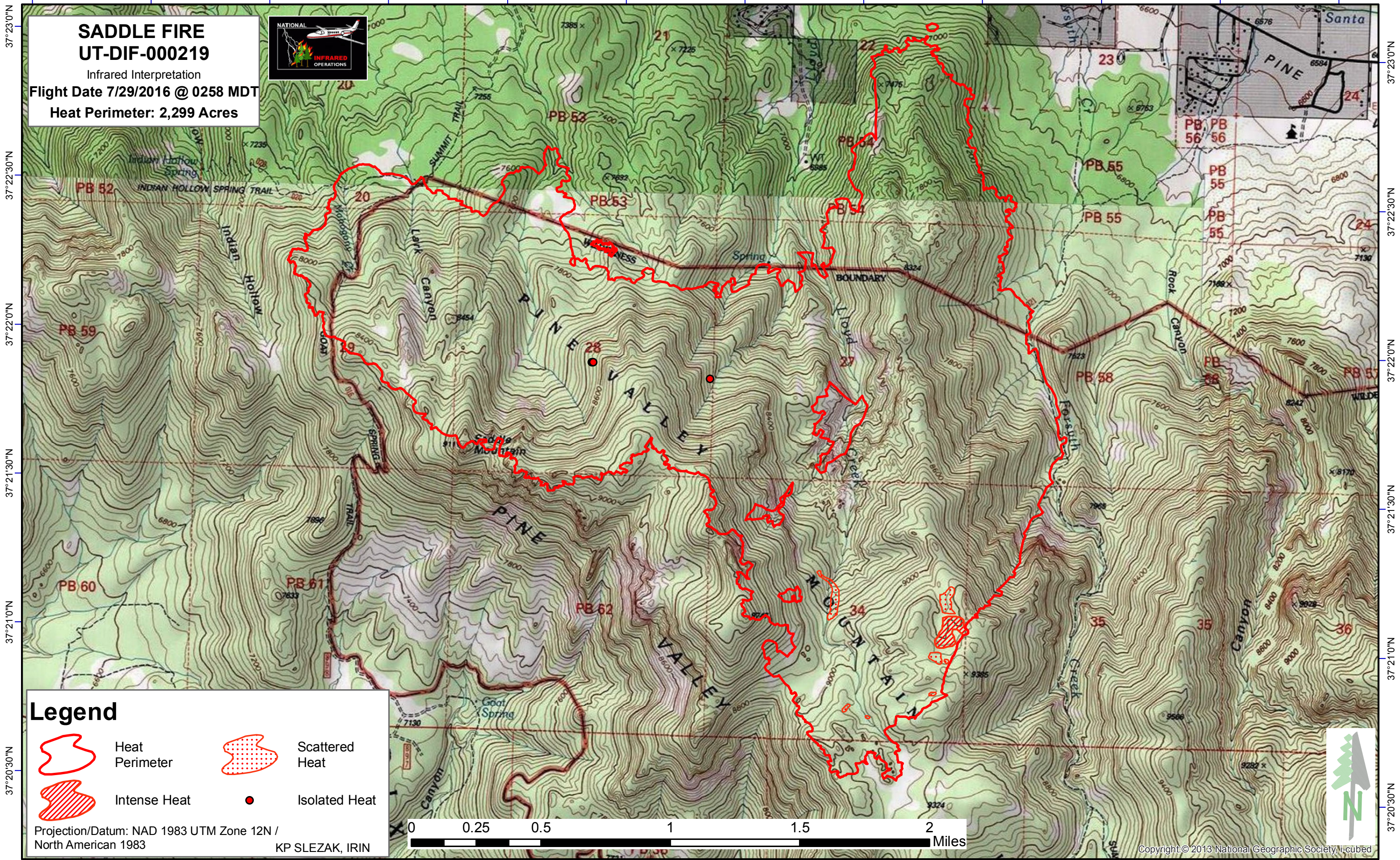


113°35'0"W 113°34'30"W 113°34'0"W 113°33'30"W 113°33'0"W 113°32'30"W 113°32'0"W 113°31'30"W 113°31'0"W 113°30'30"W 113°30'0"W 113°29'30"W



SADDLE FIRE
UT-DIF-000219
Infrared Interpretation
Flight Date 7/29/2016 @ 0258 MDT
Heat Perimeter: 2,299 Acres



Legend

- Heat Perimeter
- Scattered Heat
- Intense Heat
- Isolated Heat

Projection/Datum: NAD 1983 UTM Zone 12N / North American 1983
KP SLEZAK, IRIN



Copyright © 2013 National Geographic Society, i-cubed

113°34'30"W 113°34'0"W 113°33'30"W 113°33'0"W 113°32'30"W 113°32'0"W 113°31'30"W 113°31'0"W 113°30'30"W 113°30'0"W 113°29'30"W