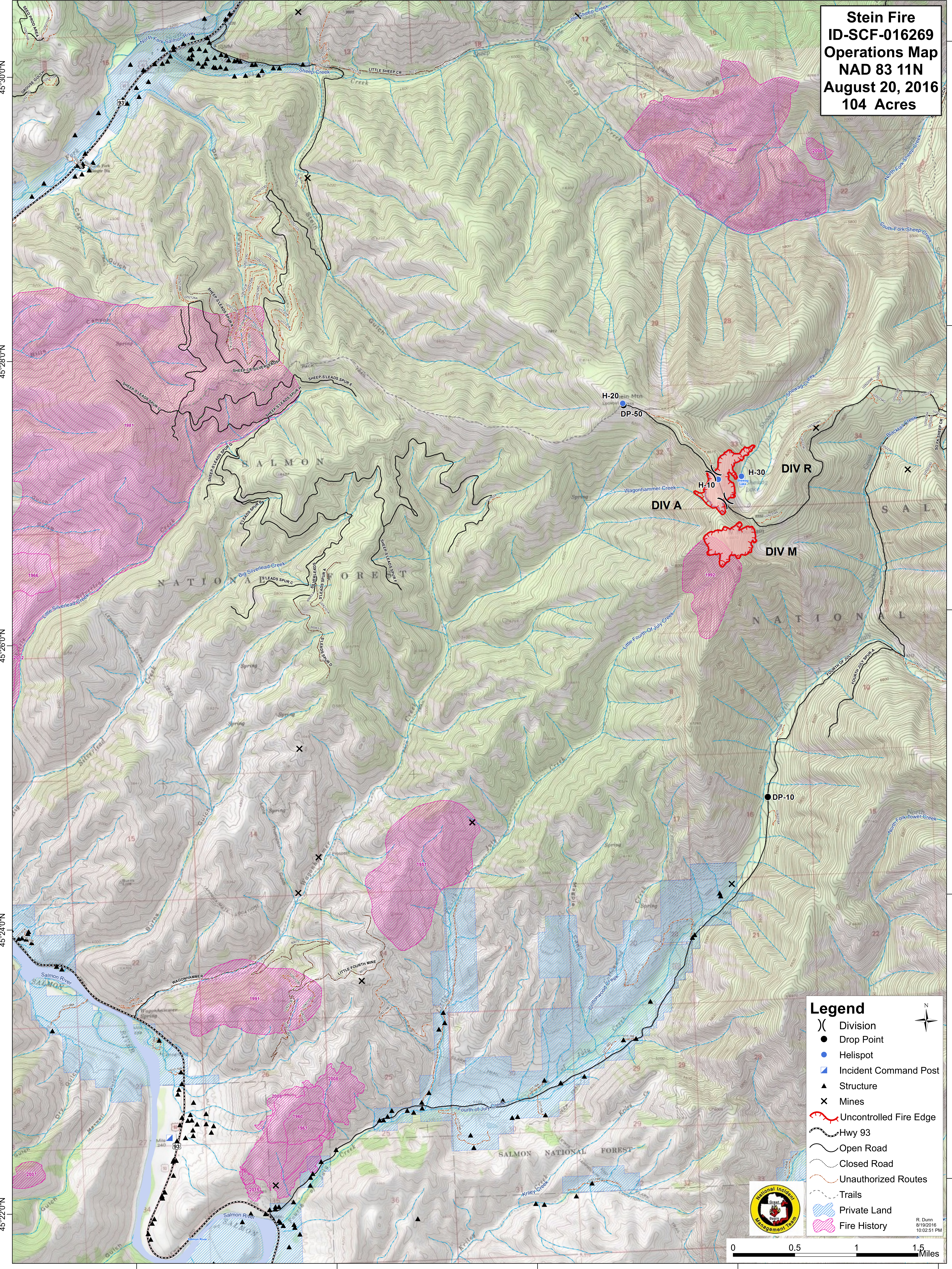


**Stein Fire
ID-SCF-016269
Operations Map
NAD 83 11N
August 20, 2016
104 Acres**



Legend

- (X) Division
- Drop Point
- Helispot
- Incident Command Post
- ▲ Structure
- × Mines
- 🔴 Uncontrolled Fire Edge
- 🛣️ Hwy 93
- 🛤️ Open Road
- 🚫 Closed Road
- 🚧 Unauthorized Routes
- 👤 Trails
- 🔵 Private Land
- 🔴 Fire History

National Incident Management Team

R. Dunn
8/19/2016
10:02:51 PM

