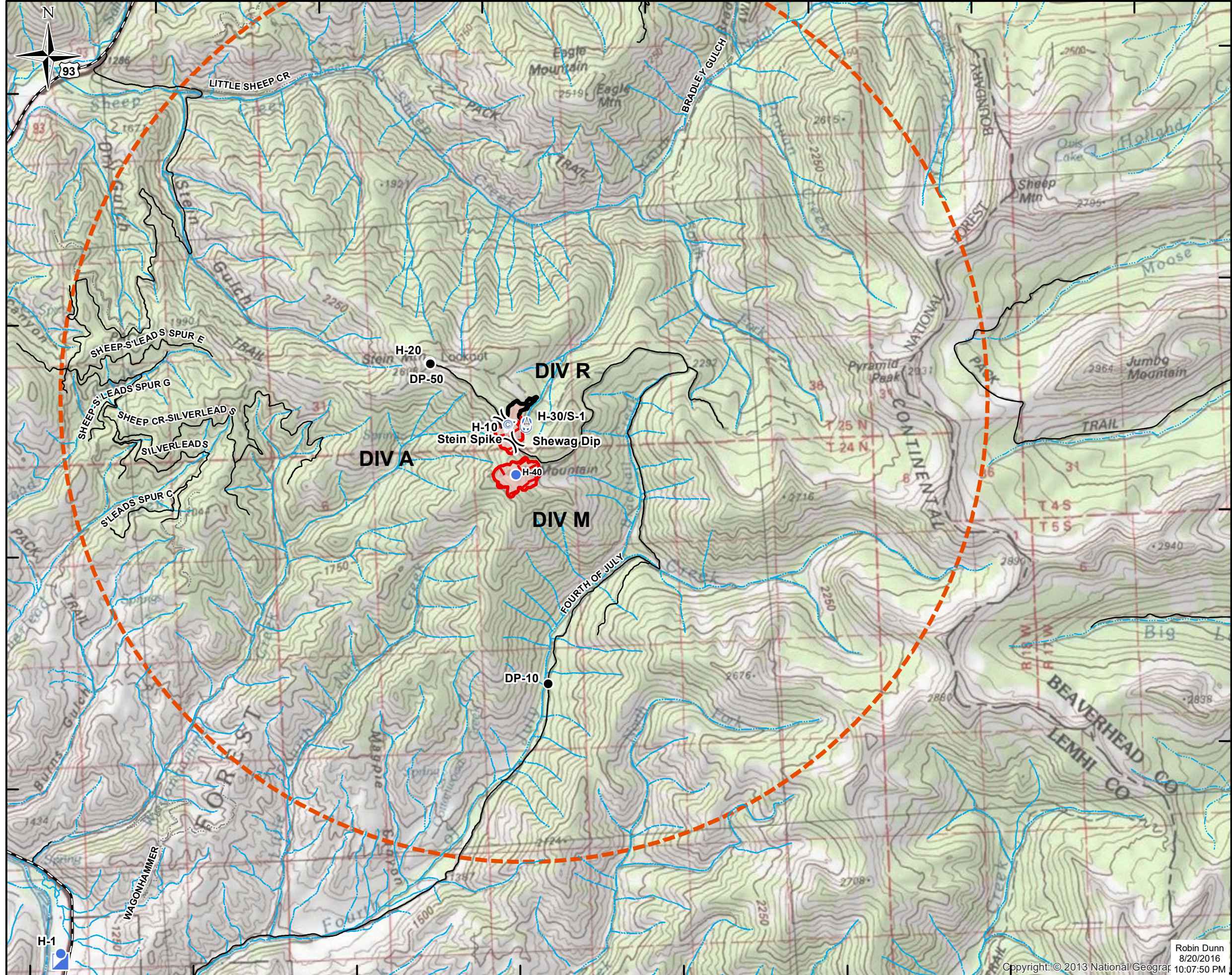


**Stein Fire**  
**ID-SCF-016269**  
**Air Ops Map**  
**NAD 83 11N**  
**August 21, 2016**  
**104 Acres**

**Legend**

-  Division
-  Drop Point
-  Helispot
-  Camp
-  Sling Site
-  Water Source
-  Incident Command Post
-  Uncontrolled Fire Edge
-  Completed Line
-  Hwy 93
-  Closed Roads
-  Open Road
-  TFR

Fire Points	Lat	Long
ICP	45° 22.497'	-113° 57.627'
Stein Camp	45° 26.982'	-113° 51.893'
DP-10	45° 27.733'	-113° 51.523'
DP-50	45° 27.530'	-113° 52.812'
H-1	45° 22.565'	-113° 57.617'
H-10	45° 26.982'	-113° 51.893'
H-20	45° 27.543'	-113° 52.818'
H-30	45° 26.994'	-113° 51.662'
S-1	45° 26.998'	-113° 51.663'
Shewag Dip	45° 26.955'	-113° 51.670'



Robin Dunn  
 8/20/2016  
 Copyright: © 2013 National Geographic 10:07:50 PM

