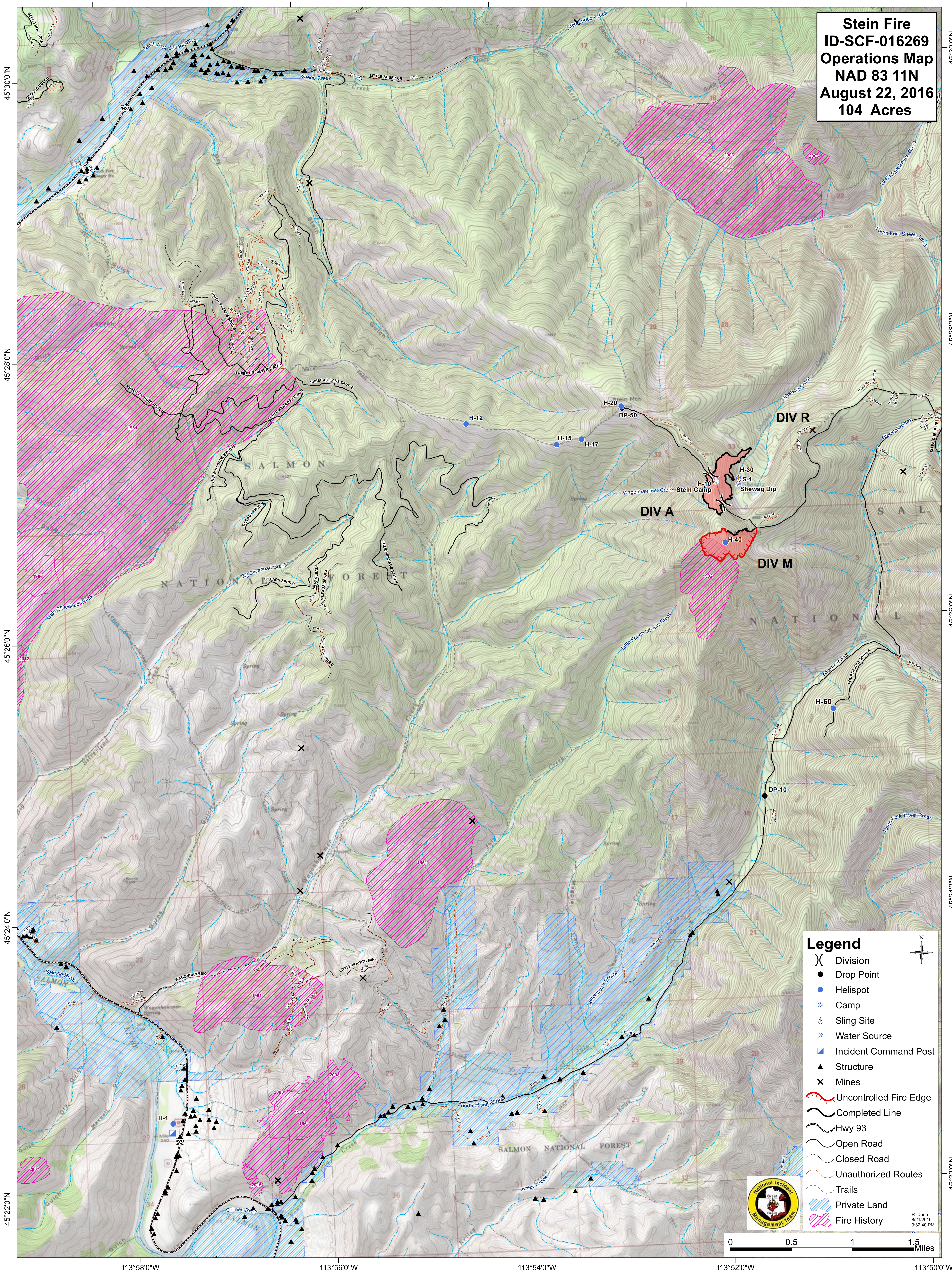


Stein Fire
ID-SCF-016269
Operations Map
NAD 83 11N
August 22, 2016
104 Acres



Legend

- () Division
- Drop Point
- Helispot
- C Camp
- ▲ Sling Site
- ⊙ Water Source
- ▨ Incident Command Post
- ▲ Structure
- X Mines
- Uncontrolled Fire Edge
- - - Completed Line
- Hwy 93
- Open Road
- - - Closed Road
- ⋯ Unauthorized Routes
- ⋯ Trails
- ▨ Private Land
- ▨ Fire History

North Arrow

Scale: 0 0.5 1 1.5 Miles

Logos: National Incident Management Team, Great Basin

R. Dunn
8/21/2016
9:32:40 PM