

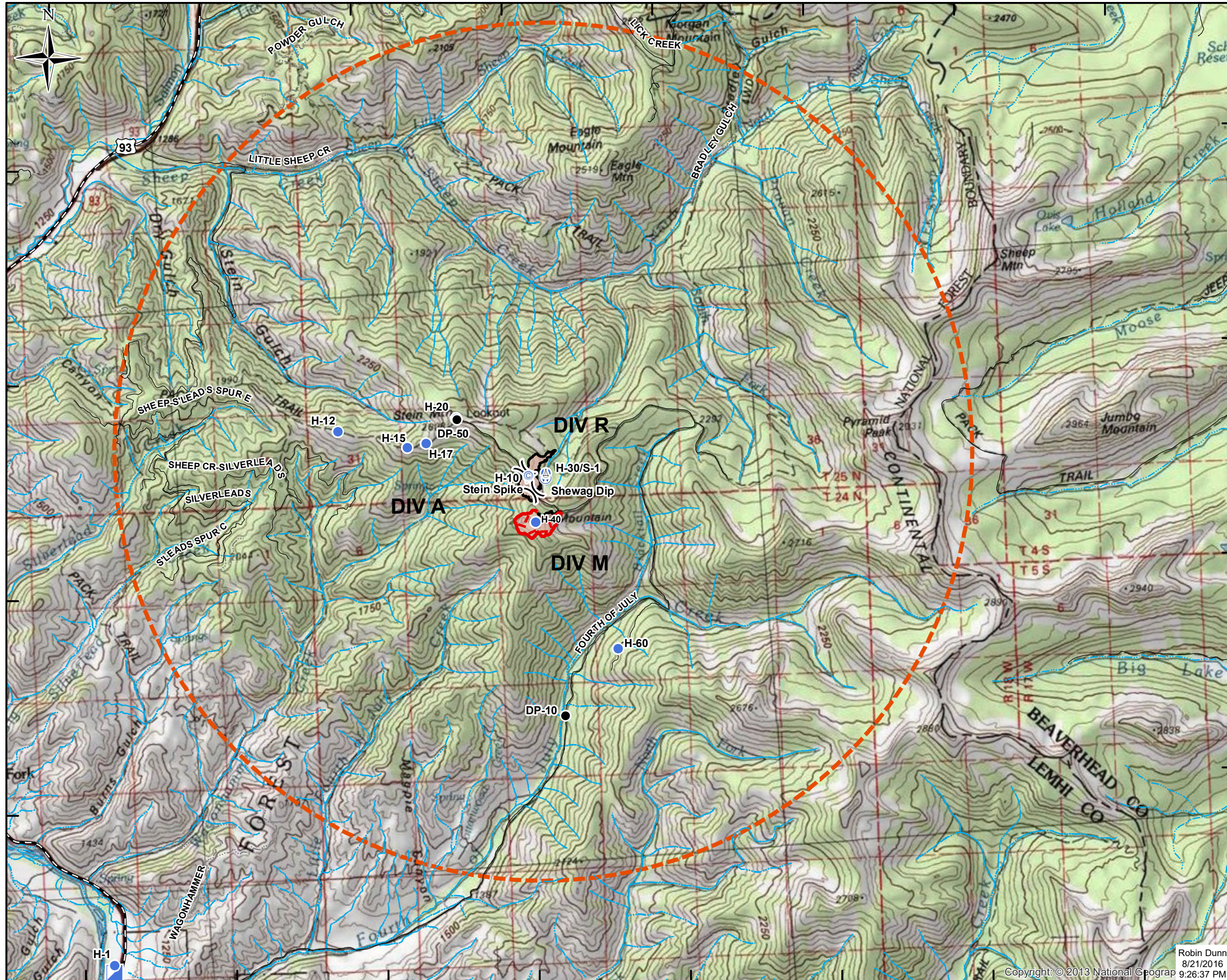
113°58'W 113°56'W 113°54'W 113°52'W 113°50'W 113°48'W 113°46'W 113°44'W

**Stein Fire**  
**ID-SCF-016269**  
**Air Ops Map**  
**NAD 83 11N**  
**August 22, 2016**  
**104 Acres**

**Legend**

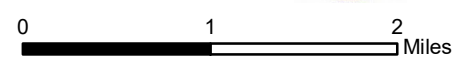
- Division
- Drop Point
- Helispot
- Camp
- Sling Site
- Water Source
- Incident Command Post
- Uncontrolled Fire Edge
- Completed Line
- Hwy 93
- Closed Roads
- Open Road
- TFR

Fire Points	Lat	Long
ICP	45° 22.497'	-113° 57.627'
Stein Camp	45° 26.982'	-113° 51.893'
DP-10	45° 27.733'	-113° 51.523'
DP-50	45° 27.530'	-113° 52.812'
H-1	45° 22.565'	-113° 57.617'
H-10	45° 26.982'	-113° 51.893'
H-12	45° 27.460'	-113° 54.393'
H-15	45° 27.287'	-113° 53.485'
H-17	45° 27.320'	-113° 53.232'
H-20	45° 27.543'	-113° 52.818'
H-30	45° 26.994'	-113° 51.662'
H-40	45° 26.547'	-113° 51.821'
H-60	45° 25.338'	-113° 50.797'
Shewag Dip	45° 26.956	-113° 51.670'
Steel Mem. Hospital	39° 00.85'	-114° 07.57'



Robin Dunn  
 8/21/2016  
 9:26:37 PM

Copyright © 2013 National Geopgraph



113°58'W 113°56'W 113°54'W 113°52'W 113°50'W 113°48'W 113°46'W 113°44'W

45°30'N  
45°28'N  
45°26'N  
45°24'N  
45°22'N

45°30'N  
45°28'N  
45°26'N  
45°24'N  
45°22'N