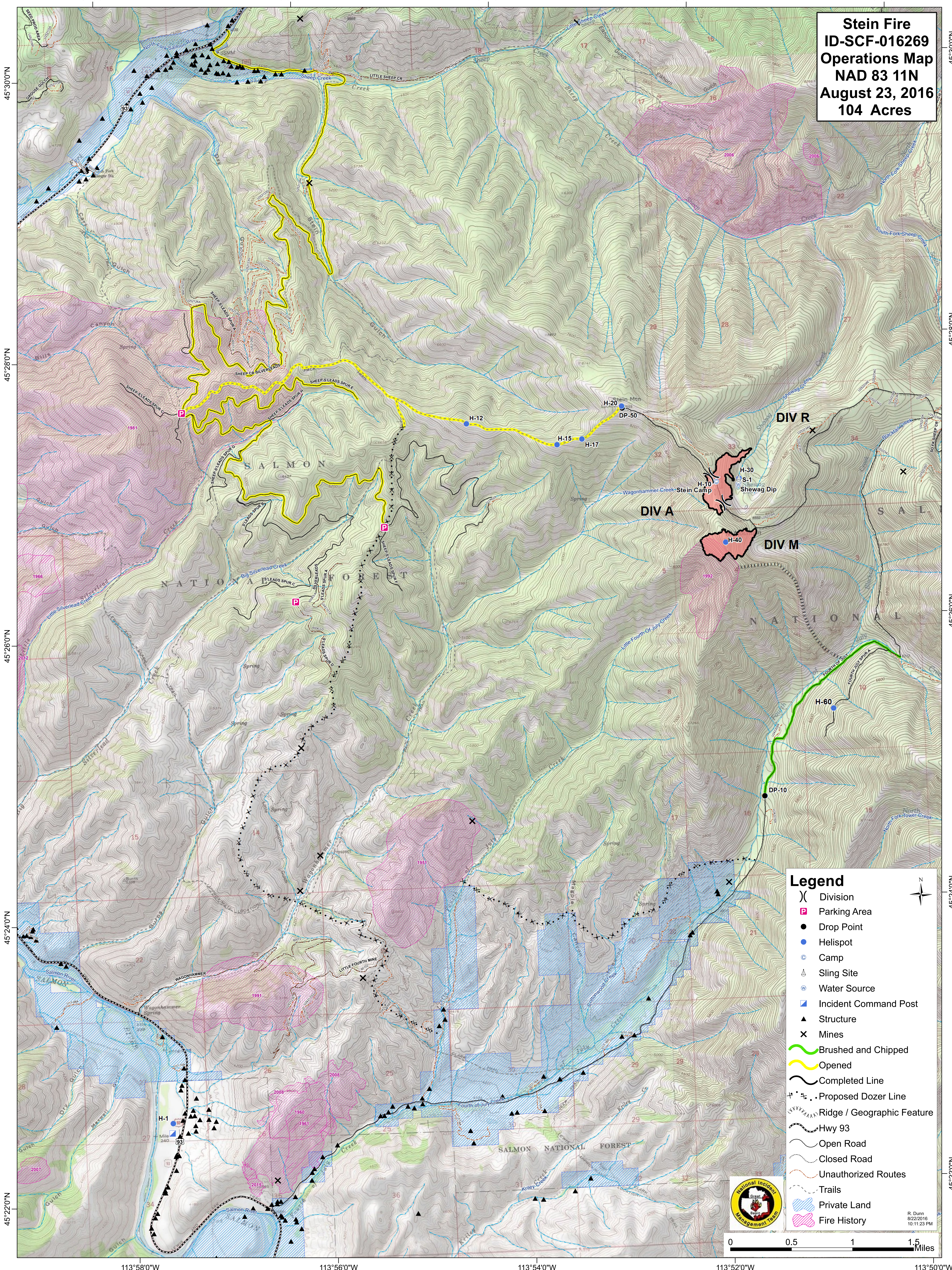


**Stein Fire
ID-SCF-016269
Operations Map
NAD 83 11N
August 23, 2016
104 Acres**



Legend

- () Division
- █ Parking Area
- Drop Point
- Helispot
- ⊙ Camp
- ⚙ Sling Site
- ⊕ Water Source
- ▣ Incident Command Post
- ▲ Structure
- ✕ Mines
- Brushed and Chipped
- Opened
- Completed Line
- · - · - Proposed Dozer Line
- ⋯ Ridge / Geographic Feature
- Hwy 93
- Open Road
- Closed Road
- Unauthorized Routes
- Trails
- ▨ Private Land
- ▨ Fire History

0 0.5 1 1.5 Miles

R. Dunn
8/22/2016
10:11:23 PM

