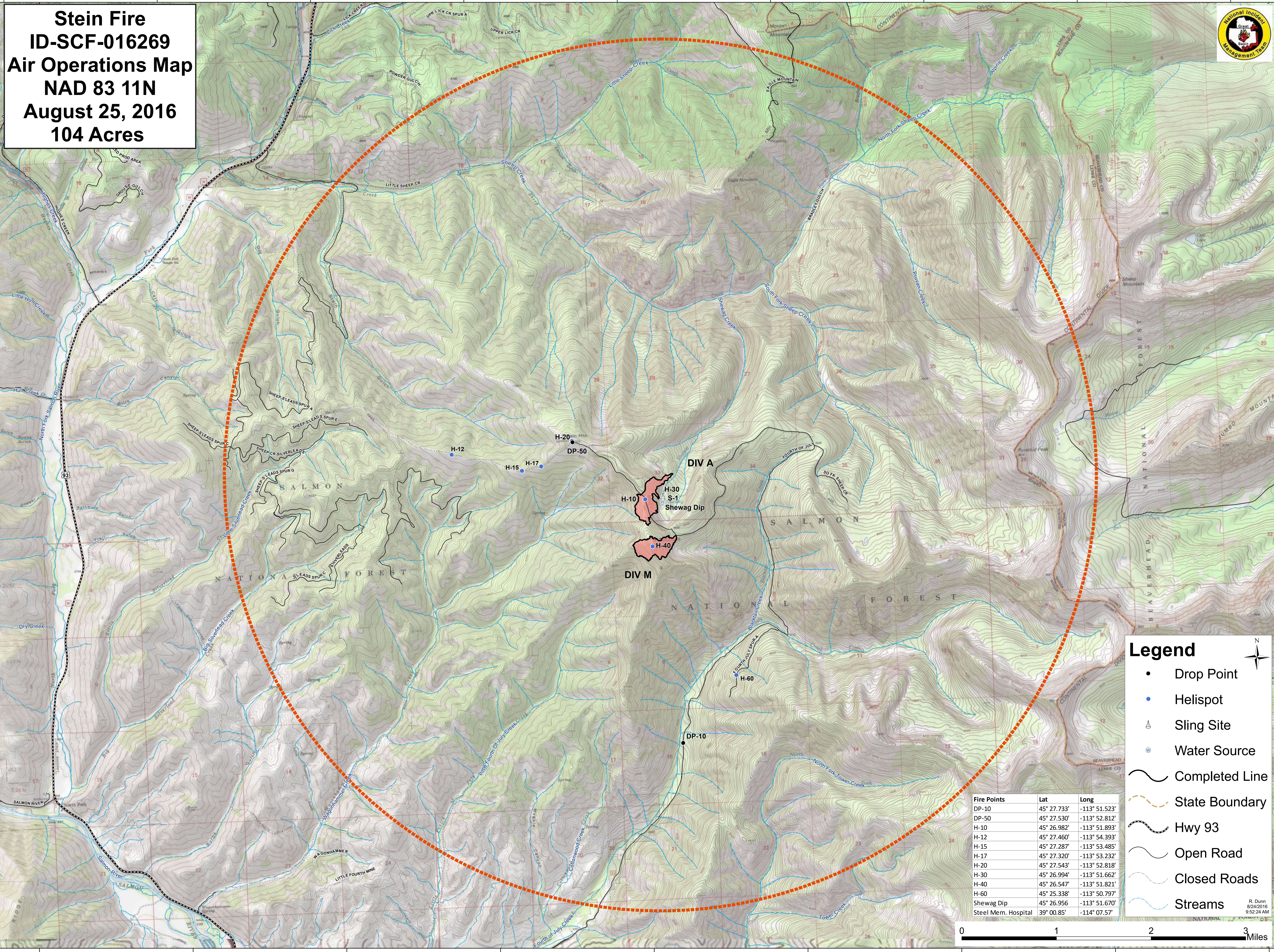


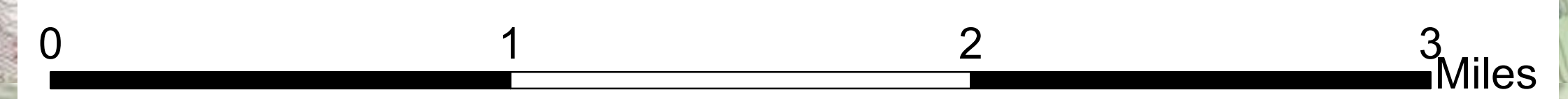
**Stein Fire  
ID-SCF-016269  
Air Operations Map  
NAD 83 11N  
August 25, 2016  
104 Acres**



**Legend**

- Drop Point
- Helispot
- ⚙ Sling Site
- ⊕ Water Source
- Completed Line
- - - State Boundary
- Hwy 93
- Open Road
- Closed Roads
- Streams

Fire Points	Lat	Long
DP-10	45° 27.733'	-113° 51.523'
DP-50	45° 27.530'	-113° 52.812'
H-10	45° 26.982'	-113° 51.893'
H-12	45° 27.460'	-113° 54.393'
H-15	45° 27.287'	-113° 53.485'
H-17	45° 27.320'	-113° 53.232'
H-20	45° 27.543'	-113° 52.818'
H-30	45° 26.994'	-113° 51.662'
H-40	45° 26.547'	-113° 51.821'
H-60	45° 25.338'	-113° 50.797'
Shewag Dip	45° 26.956'	-113° 51.670'
Steel Mem. Hospital	39° 00.85'	-114° 07.57'



R. Dunn  
8/24/2016  
9:52:24 AM