

Stein Fire
ID-SCF-016269
Operations Map
NAD 83 11N
August 25, 2016
104 Acres

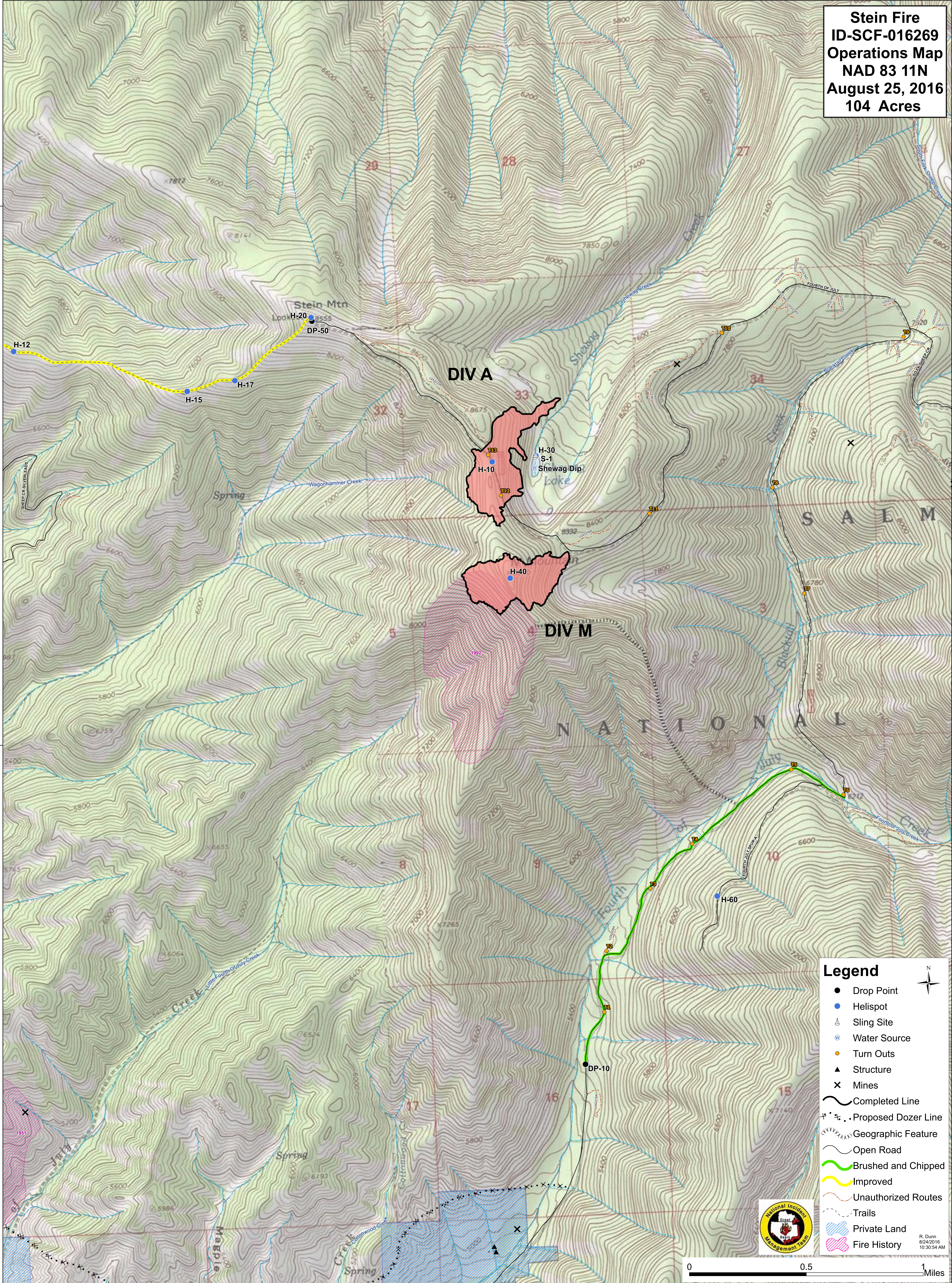
45°28'0"N

45°28'0"N

45°26'0"N

45°26'0"N

45°24'0"N



Legend

- Drop Point
- Helispot
- ▲ Sling Site
- ⊕ Water Source
- Turn Outs
- ▲ Structure
- × Mines
- Completed Line
- · - · - Proposed Dozer Line
- ⌒ Geographic Feature
- Open Road
- Brushed and Chipped
- Improved
- Unauthorized Routes
- Trails
- ▨ Private Land
- ▨ Fire History

National Incident Management Team

R. Dunn
8/24/2016
10:30:54 AM

