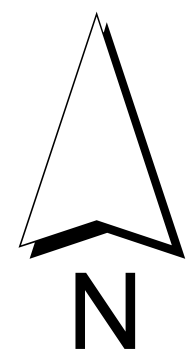


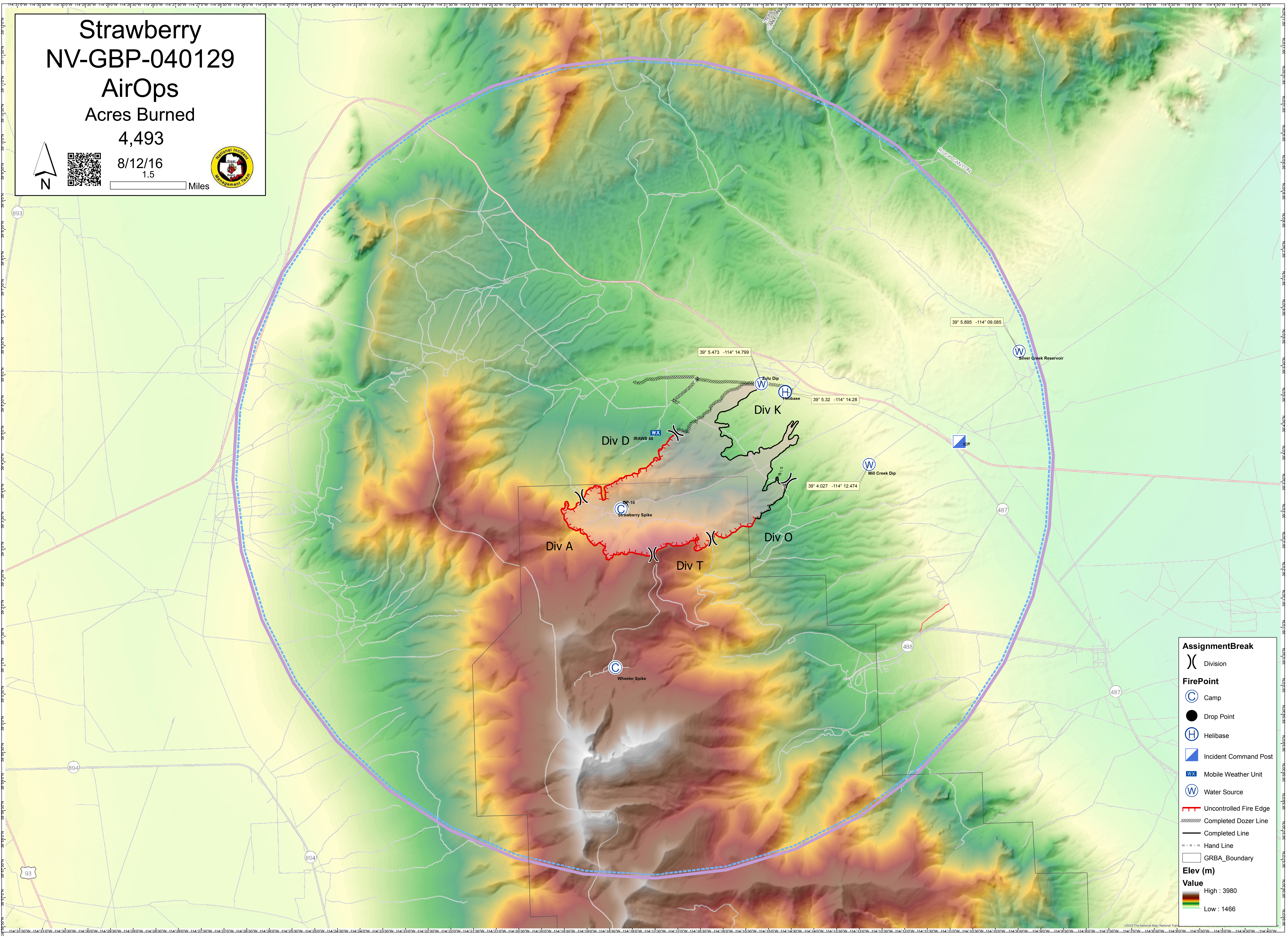
# Strawberry NV-GBP-040129 AirOps Acres Burned

4,493

8/12/16  
1.5



1.5 Miles



**AssignmentBreak**  
) Division

**FirePoint**  
C Camp  
● Drop Point  
H Helibase  
I Incident Command Post  
WX Mobile Weather Unit  
W Water Source

Uncontrolled Fire Edge  
Completed Dozer Line  
Completed Line  
Hand Line  
GRBA\_Boundary

**Elev (m)**  
Value  
High : 3980  
Low : 1466