

# Strawberry NV-GBP-040129 Briefing

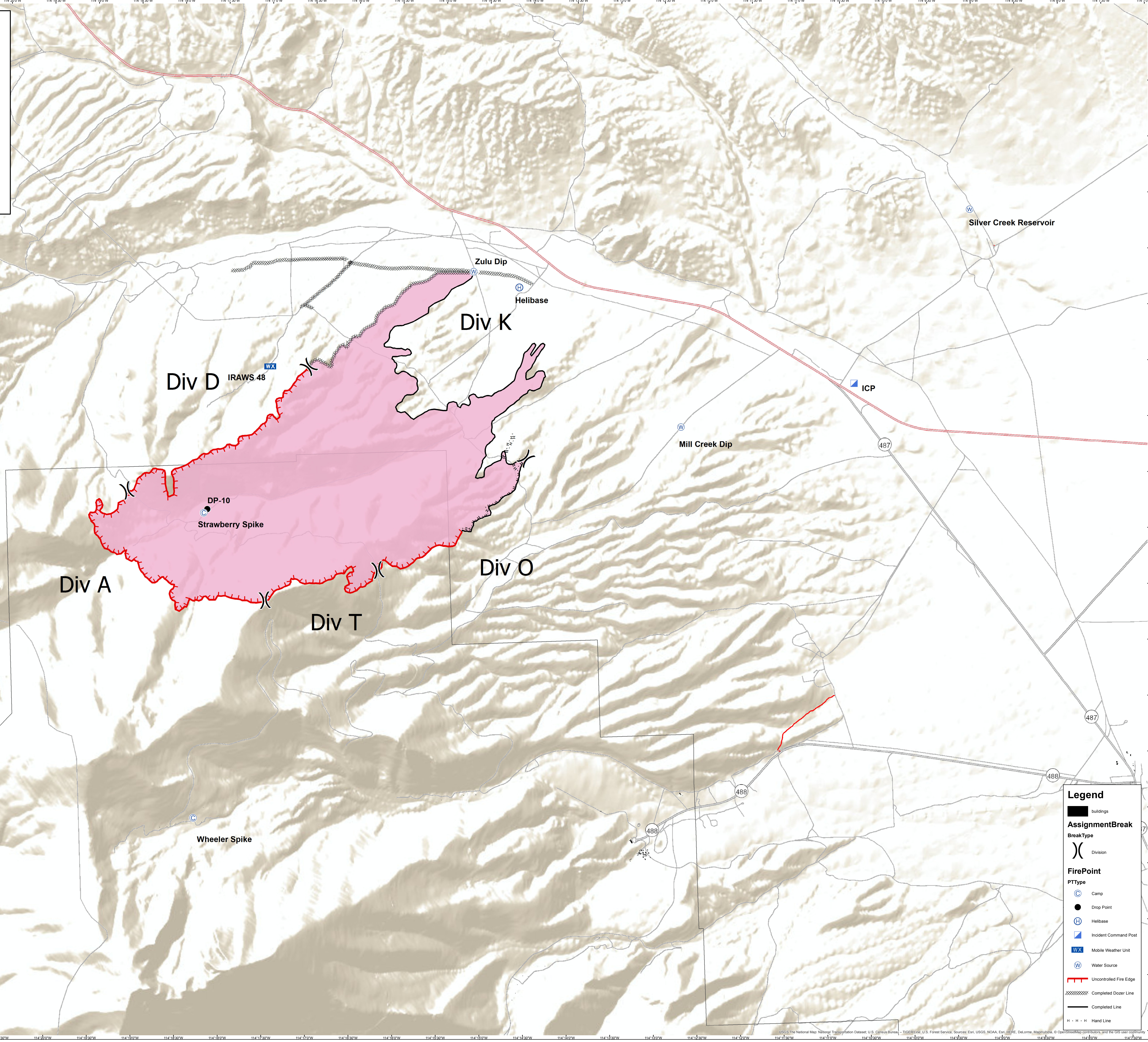
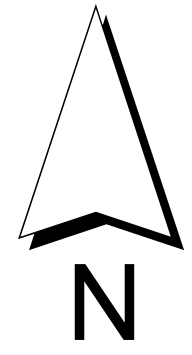
Acres Burned

4,493

8/12/16

1

Miles



**Legend**

- buildings
- AssignmentBreak**
- BreakType
- (X) Division
- FirePoint**
- PTType
- (C) Camp
- (●) Drop Point
- (H) Helibase
- (I) Incident Command Post
- (WX) Mobile Weather Unit
- (W) Water Source
- Uncontrolled Fire Edge
- Completed Dozer Line
- Completed Line
- Hand Line