

Strawberry NV-GBP-040129

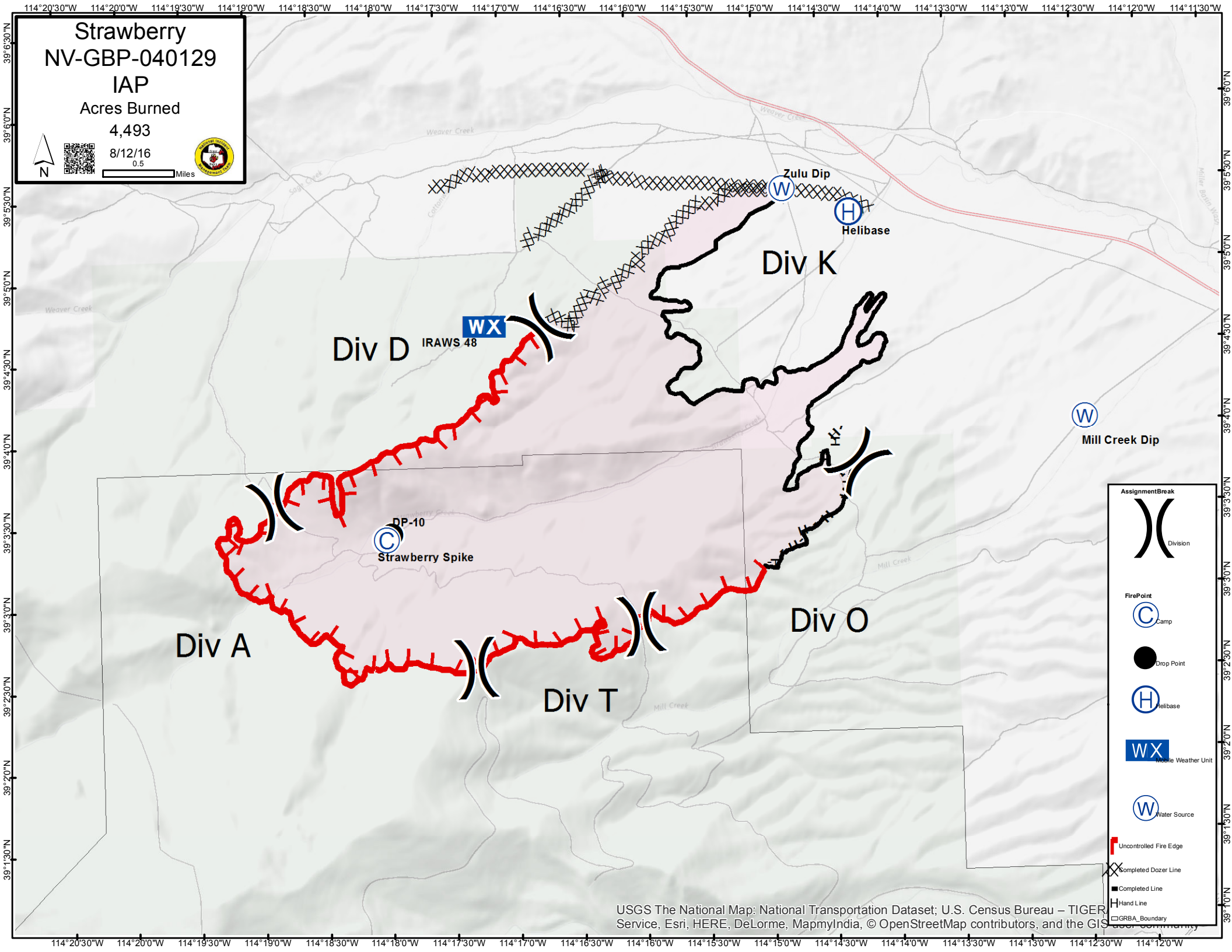
IAP

Acres Burned
4,493

8/12/16
0.5



0.5 Miles



Div D

WX

IRAWS 48

Div K

Zulu Dip

Helibase

Mill Creek Dip

Div A

DP-10

Strawberry Spike

Div O

Div T

AssignmentBreak



Division

FirePoint



Camp

Drop Point



Helibase



Mobile Weather Unit



Water Source



Uncontrolled Fire Edge



Completed Dozer Line



Completed Line



Hand Line



GRBA_Boundary

Local Community

