

# Strawberry

NV-GBP-040129

## Jurisdiction

August 14, 2016

Acres Burned  
4,601

### AGENCY

- BLM
- NPS
- Private

### Legend

#### AssignmentBreak

##### BreakType

- Division

##### FirePoint

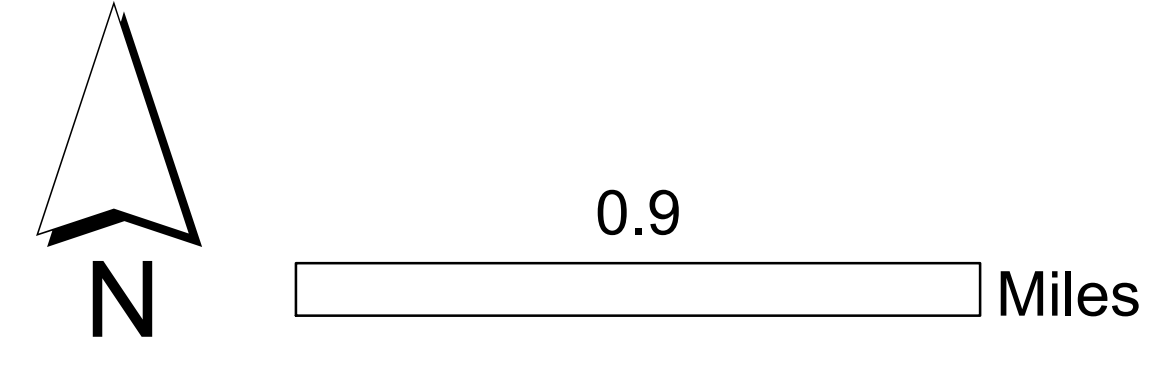
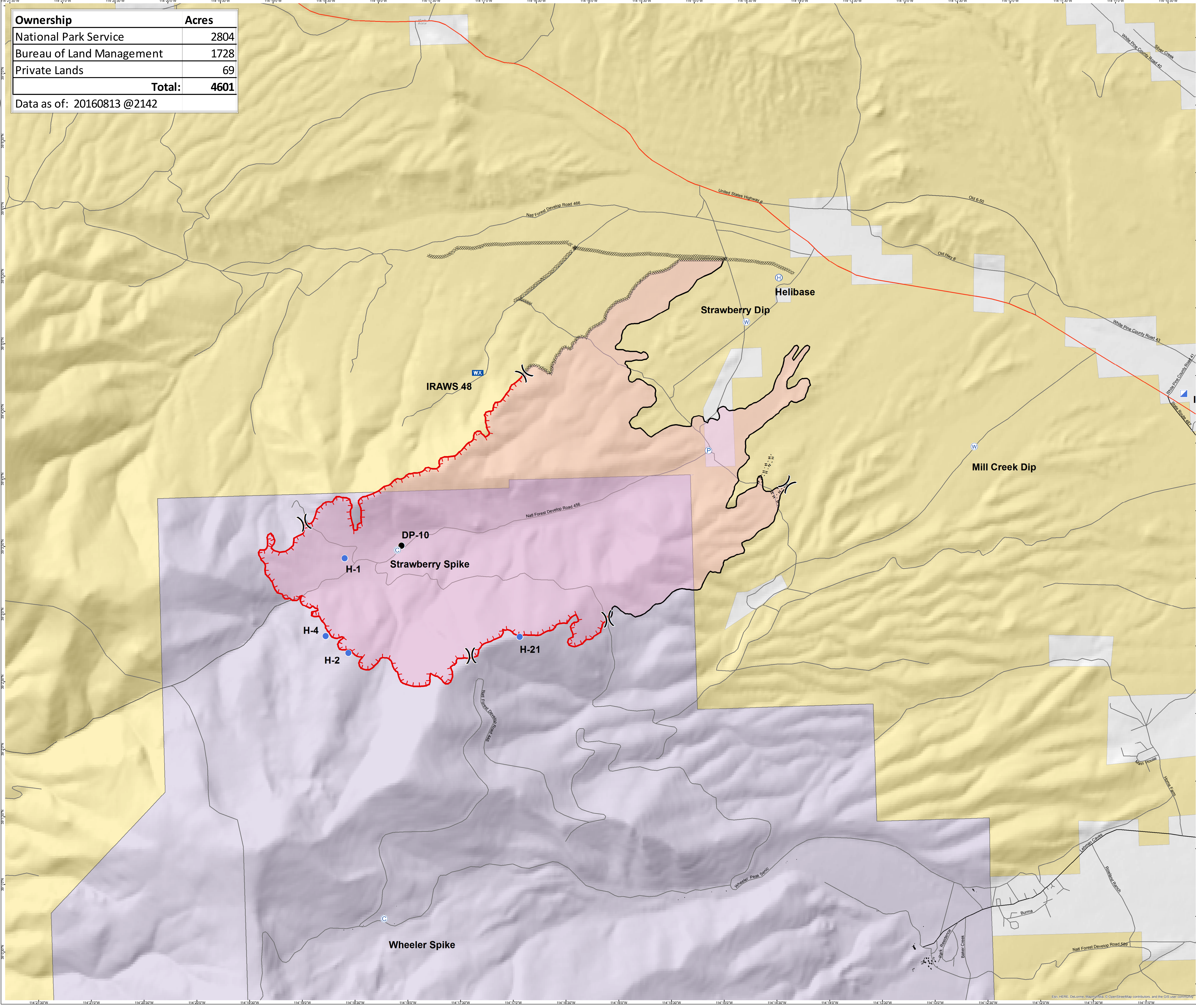
##### PTType

- Camp
- Drop Point
- Helibase
- Helispot
- Incident Command Post
- Mobile Weather Unit
- Pump
- Water Source

- Uncontrolled Fire Edge
- Completed Dozer Line
- Completed Line
- Hand Line
- FirePolygon
- buildings

Ownership	Acres
National Park Service	2804
Bureau of Land Management	1728
Private Lands	69
<b>Total:</b>	<b>4601</b>

Data as of: 20160813 @2142



Esri, HERE, DeLorme, Mapbox, OpenStreetMap contributors, and the GIS User community