

**IAP Map - Tule Fire
Overview**
7,265 Acres
Virginia Mountains Complex
NV-CCD-030409
7/31/2016 0600
Perimeter 7/30/2016 at 1830

**NOTE OVERVIEW MAP ONLY
NORTH IS LEFT SIDE OF MAP**

Legend

Point Type

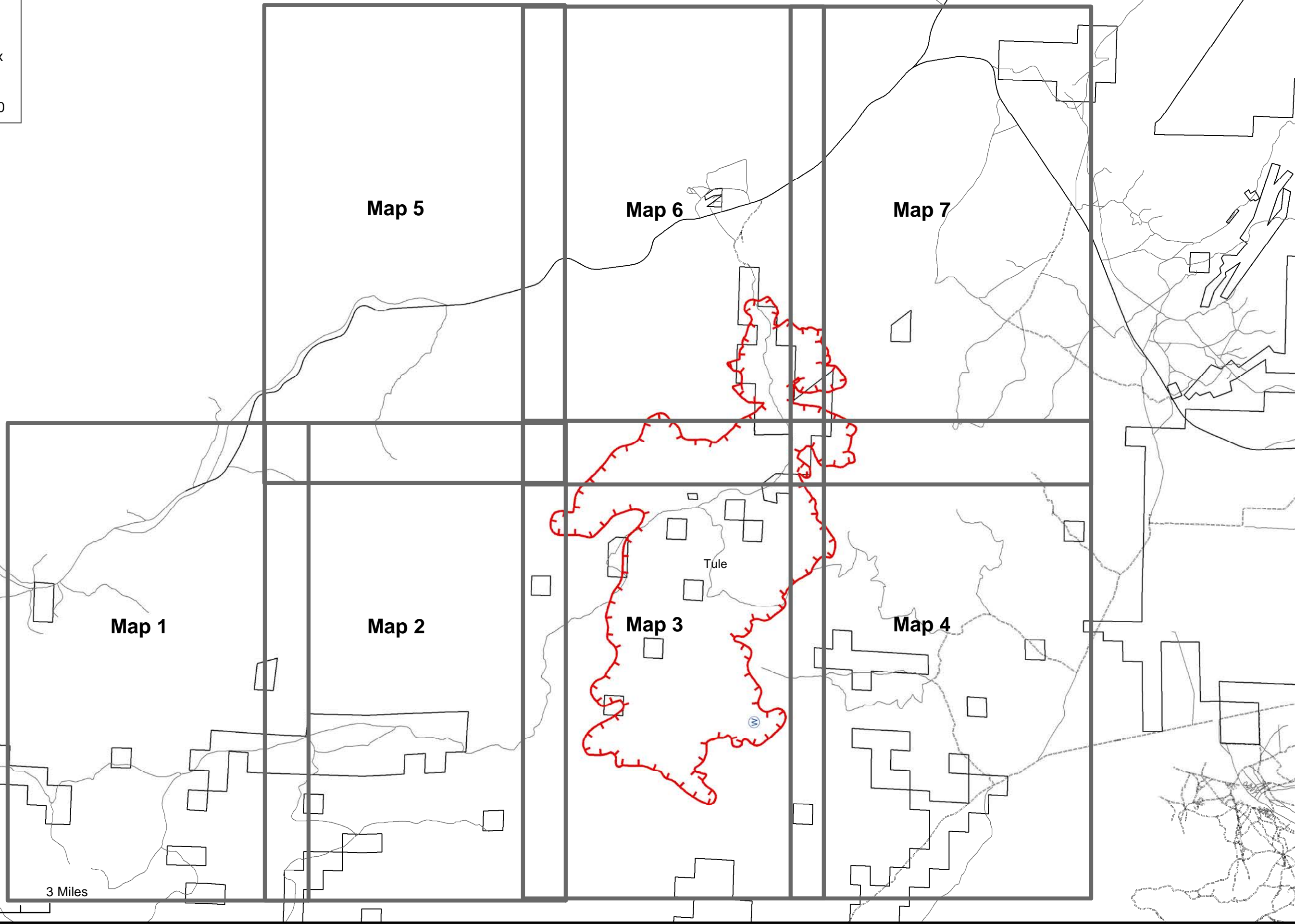
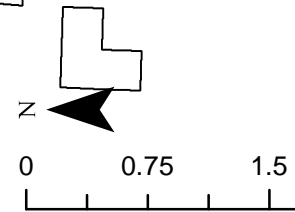

- Helibase (H in circle)
- Helispot (Blue circle)
- Repeater (R in circle)
- Water Source (W in circle)

Uncontrolled Fire Edge (Red dashed line)

Completed Line (Black solid line)

Roads - Surface


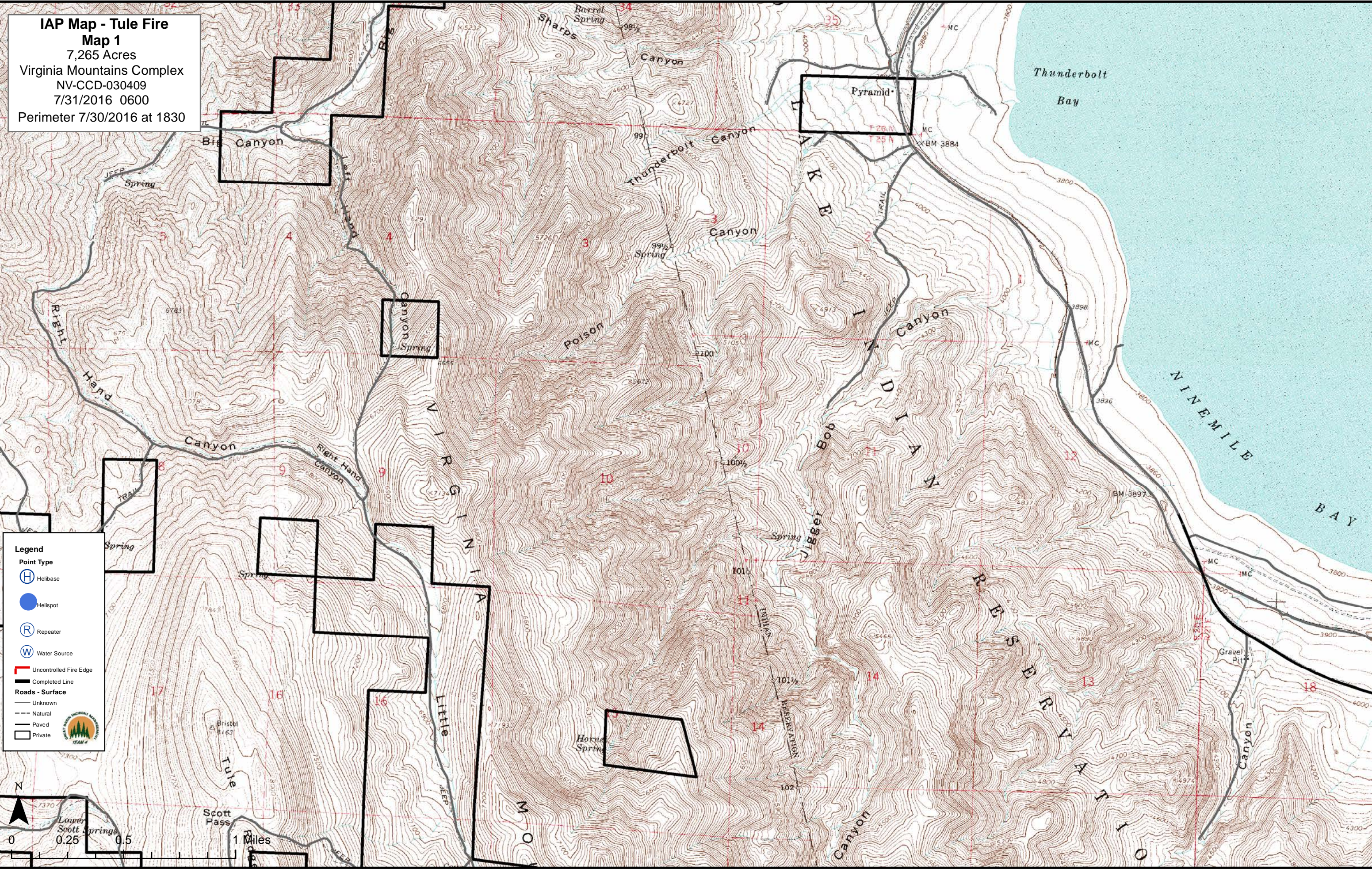
- Unknown (Thin solid line)
- Natural (Dashed line)
- Paved (Thick solid line)
- Private (Thin solid line)



IAP Map - Tule Fire
Map 1
 7,265 Acres
 Virginia Mountains Complex
 NV-CCD-030409
 7/31/2016 0600
 Perimeter 7/30/2016 at 1830

Legend

- Point Type
 - Helibase (H in circle)
 - Helispot (Blue circle)
 - Repeater (R in circle)
 - Water Source (W in circle)
- Uncontrolled Fire Edge (Red line)
- Completed Line (Black line)
- Roads - Surface
 - Unknown (Thin grey line)
 - Natural (Dashed grey line)
 - Paved (Double grey line)
 - Private (Thin black line)

IAP Map - Tule Fire
Map 2
 7,265 Acres
 Virginia Mountains Complex
 NV-CCD-030409
 7/31/2016 0600
 Perimeter 7/30/2016 at 1830

Legend

Point Type


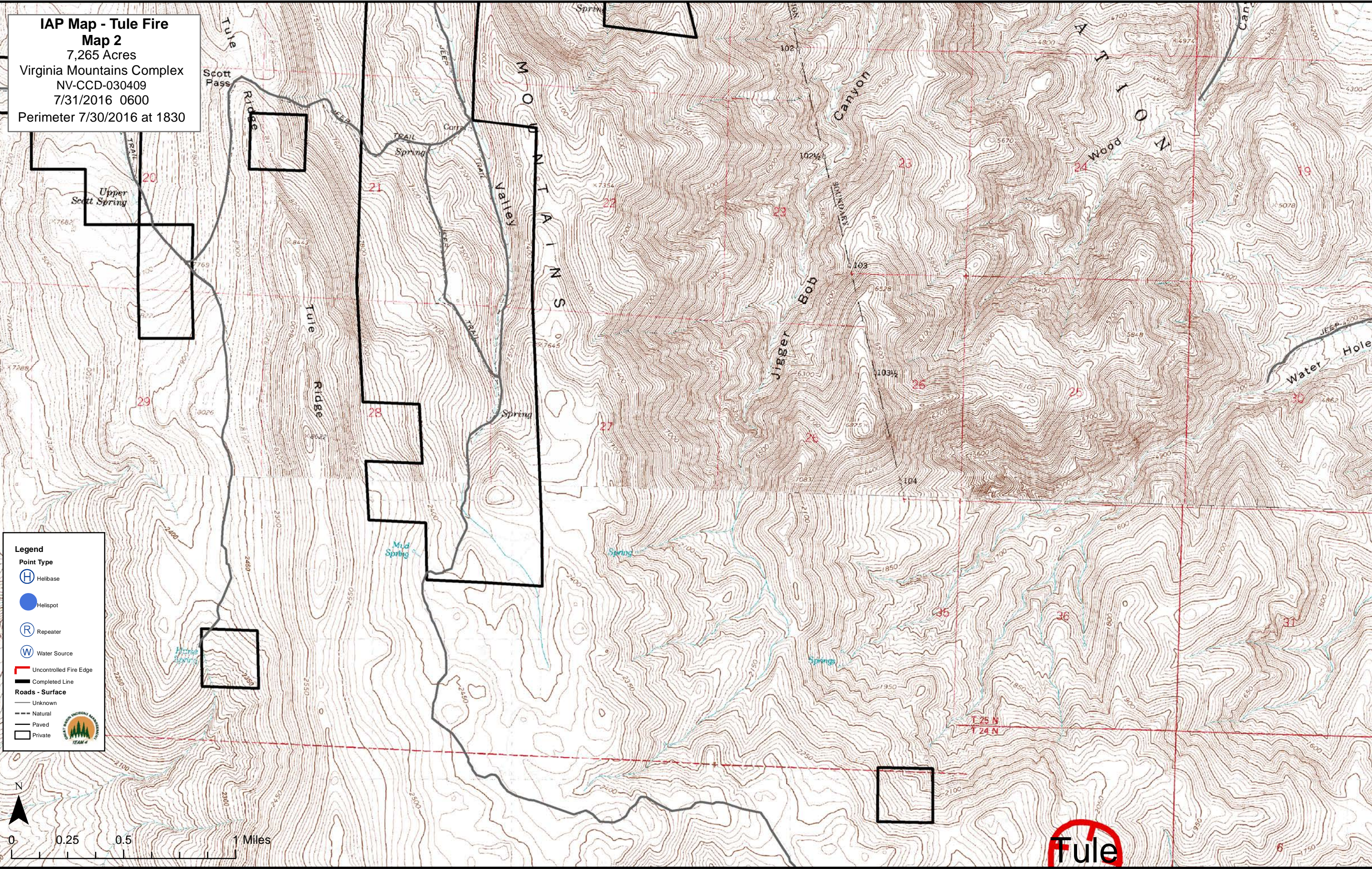
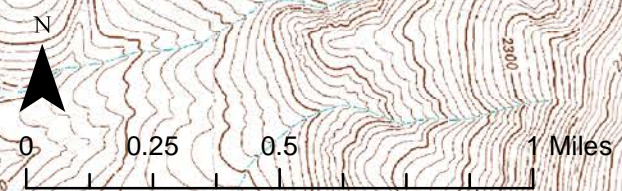
- Helibase
- Helispot
- Repeater
- Water Source

Line

- Uncontrolled Fire Edge
- Completed Line

Roads - Surface

- Unknown
- Natural
- Paved
- Private

IAP Map - Tule Fire
Map 3
 7,265 Acres
 Virginia Mountains Complex
 NV-CCD-030409
 7/31/2016 0600
 Perimeter 7/30/2016 at 1830

Legend

Point Type


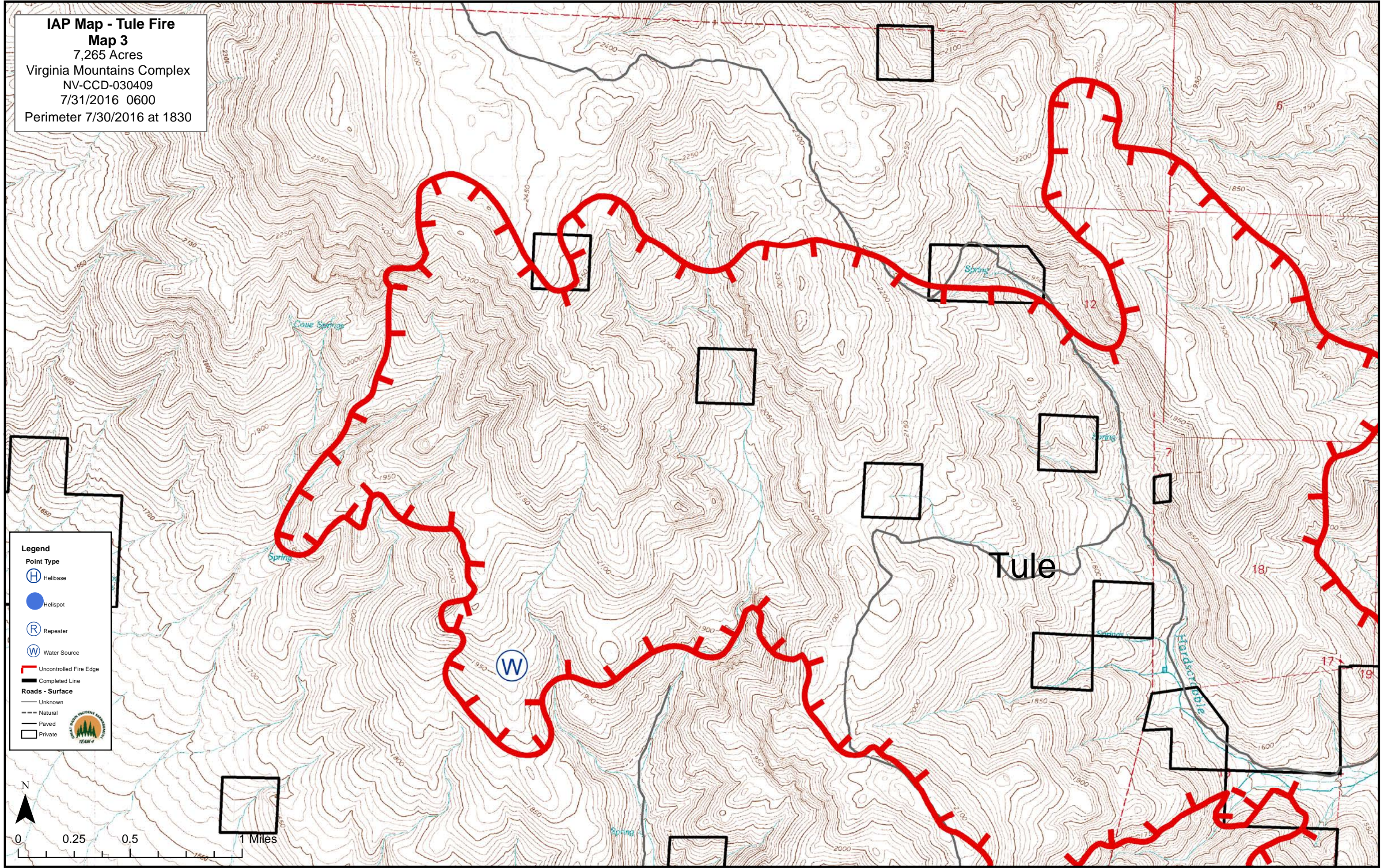
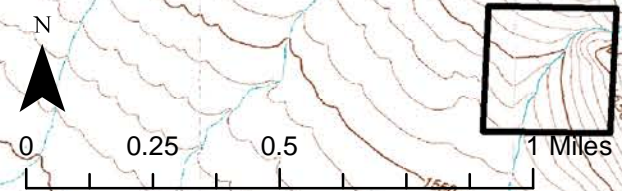
- Helibase
- Helispot
- Repeater
- Water Source

Line Types

- Uncontrolled Fire Edge
- Completed Line

Roads - Surface

- Unknown
- Natural
- Paved
- Private

IAP Map - Tule Fire
Map 4
7,265 Acres
Virginia Mountains Complex
NV-CCD-030409
7/31/2016 0600
Perimeter 7/30/2016 at 1830



Tule

Legend

Point Type

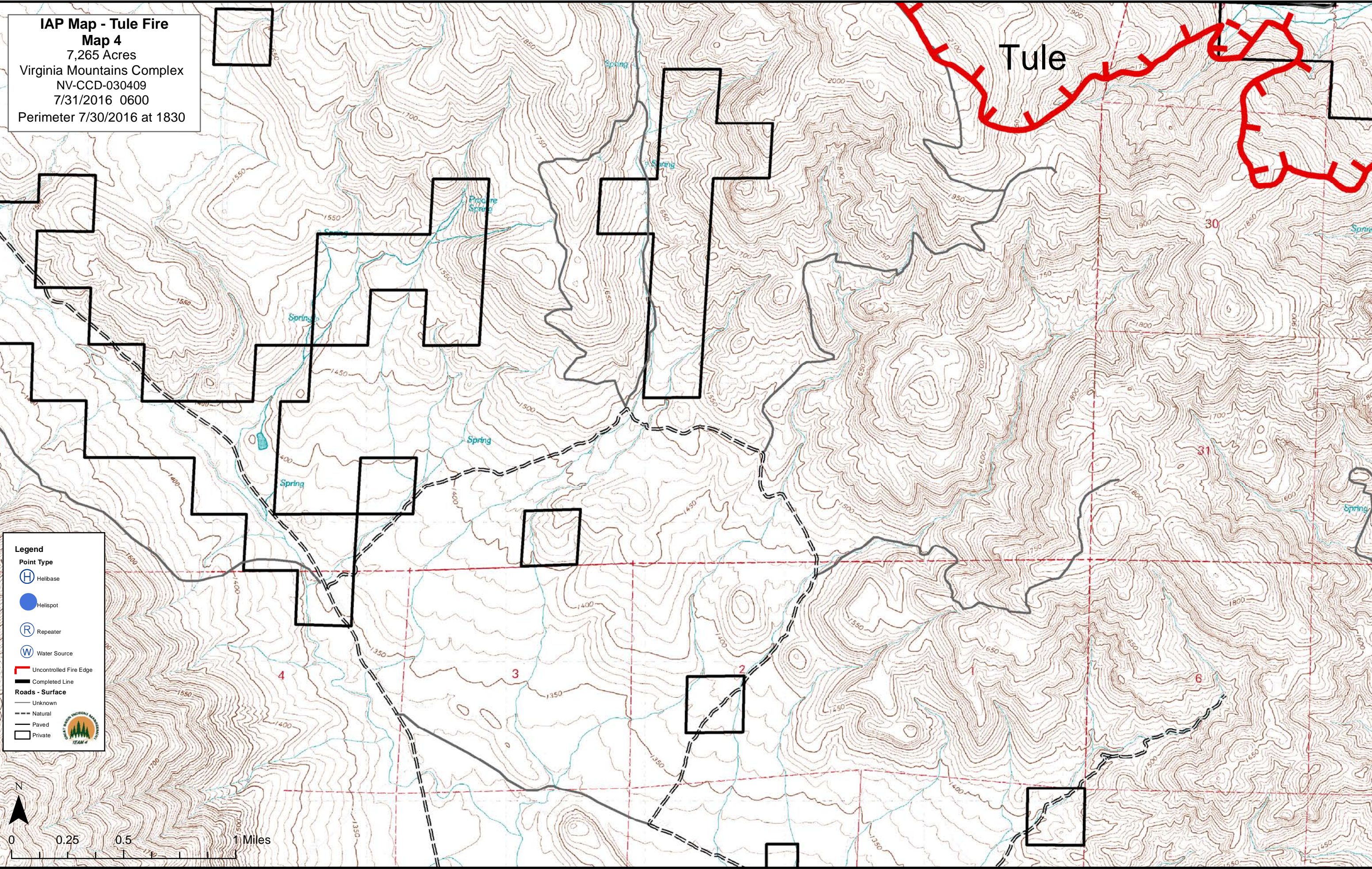
- Helibase (H in a circle)
- Helispot (Blue circle)
- Repeater (R in a circle)
- Water Source (W in a circle)

Line Types

- Uncontrolled Fire Edge (Red dashed line)
- Completed Line (Black solid line)

Roads - Surface

- Unknown (Thin solid line)
- Natural (Dashed line)
- Paved (Double dashed line)
- Private (Thin solid line with a white box)



IAP Map - Tule Fire
Map 5
7,265 Acres
Virginia Mountains Complex
NV-CCD-030409
7/31/2016 0600
Perimeter 7/30/2016 at 1830



Legend

Point Type

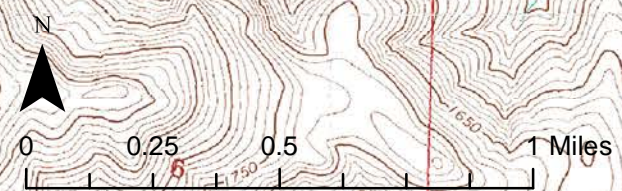
- Ⓜ Helibase
- Helispot
- Ⓡ Repeater
- Ⓜ Water Source

Uncontrolled Fire Edge

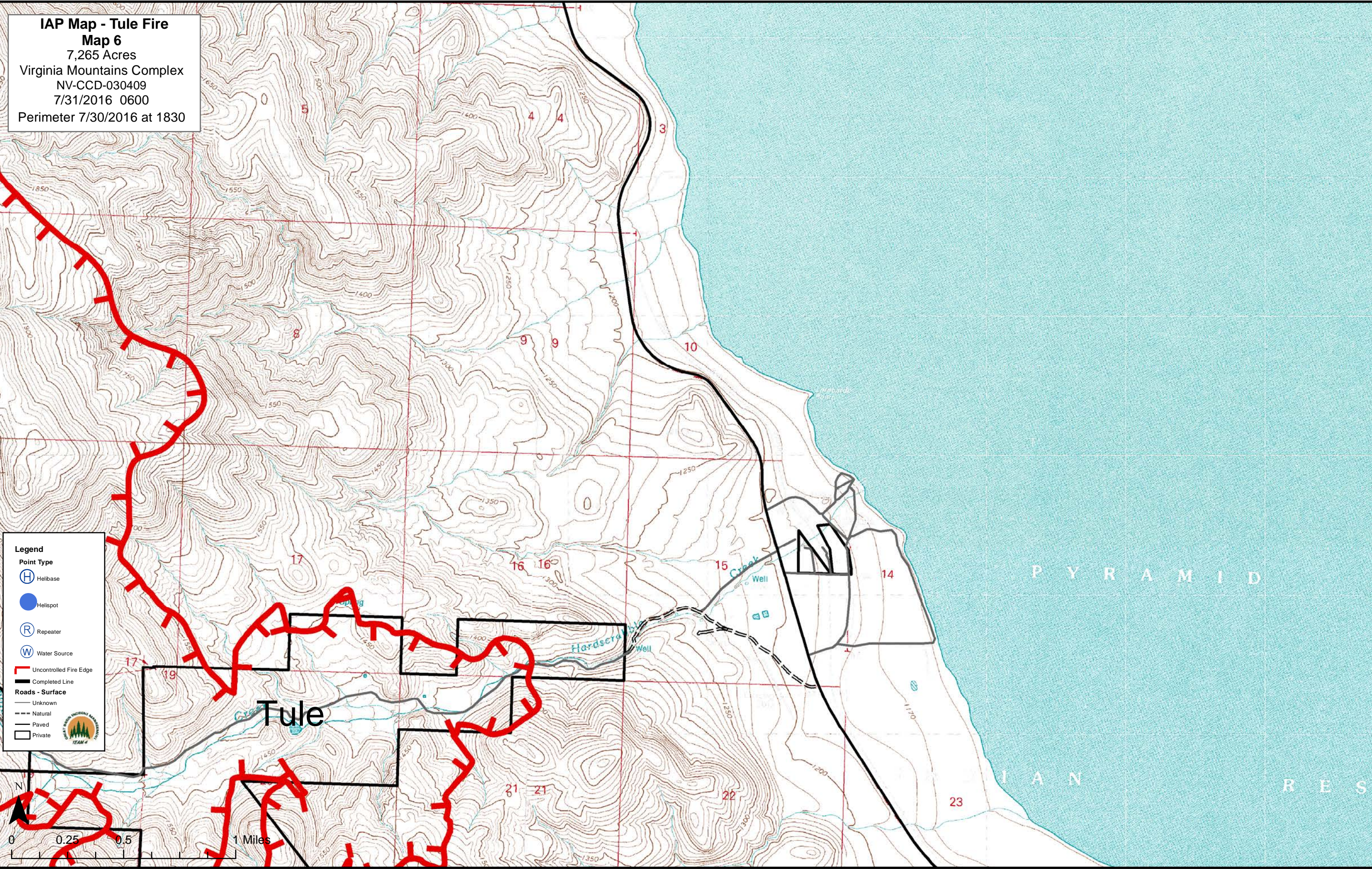
Completed Line

Roads - Surface

- Unknown
- - - Natural
- ▬ Paved
- Private



IAP Map - Tule Fire
Map 6
 7,265 Acres
 Virginia Mountains Complex
 NV-CCD-030409
 7/31/2016 0600
 Perimeter 7/30/2016 at 1830



Legend

Point Type

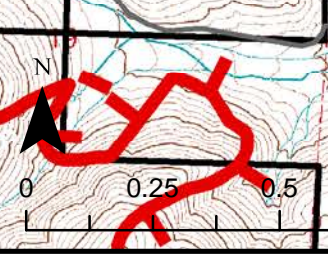
- Helibase
- Helispot
- Repeater
- Water Source

Line Types

- Uncontrolled Fire Edge
- Completed Line

Roads - Surface

- Unknown
- Natural
- Paved
- Private



P Y R A M I D

I A N R E S

Tule

Hardsera

Creek

Well

Well

4 4

3

9 9

10

16 16

15

14

17

19

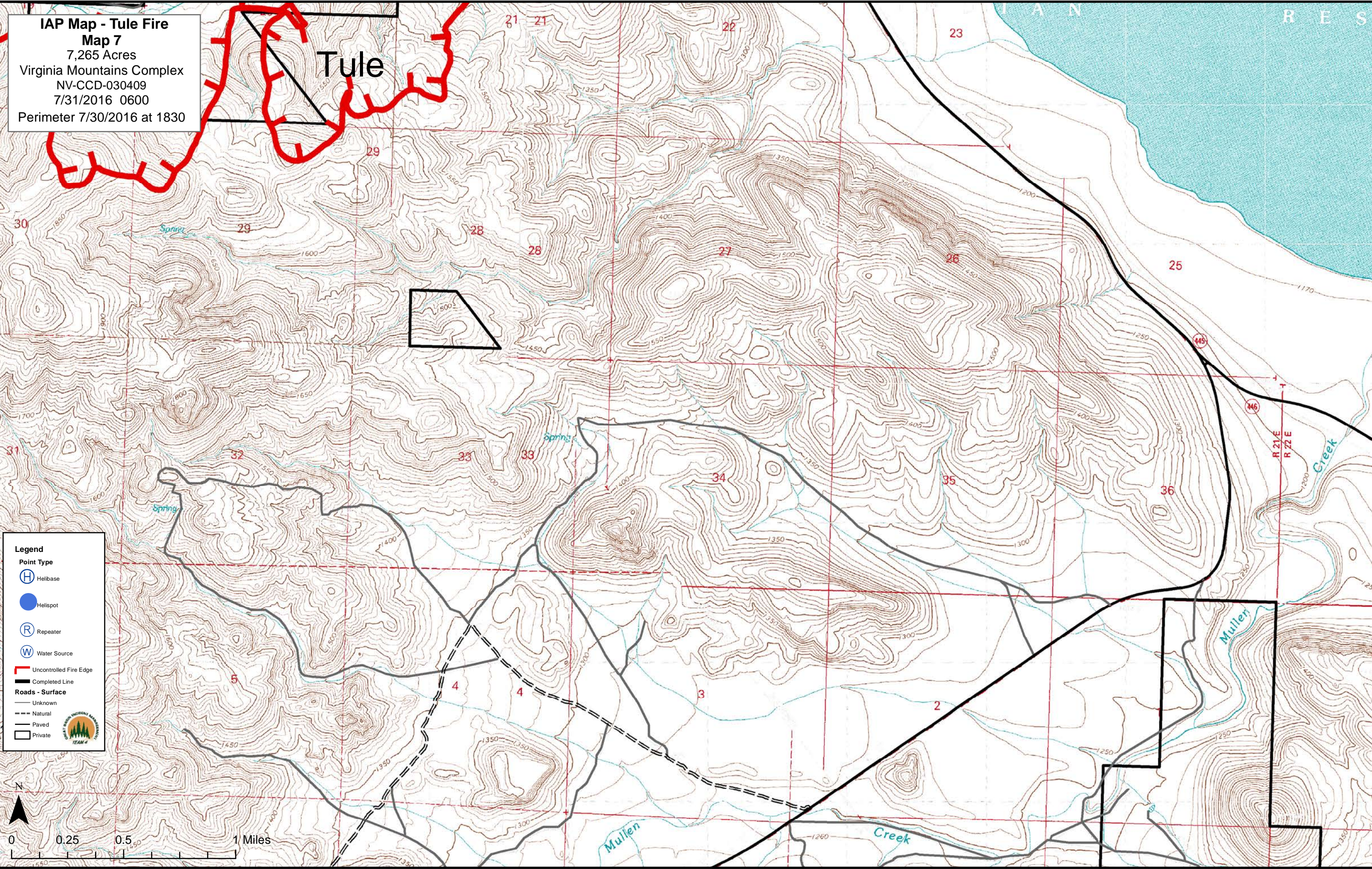
21 21

22

23

IAP Map - Tule Fire
Map 7
 7,265 Acres
 Virginia Mountains Complex
 NV-CCD-030409
 7/31/2016 0600
 Perimeter 7/30/2016 at 1830

Tule



Legend

Point Type

- Helibase
- Helispot
- Repeater
- Water Source

Line Types

- Uncontrolled Fire Edge
- Completed Line

Roads - Surface

- Unknown
- Natural
- Paved
- Private

