

IAP Map - Anderson Fire Overview

13,196 Acres
Virginia Mountains Complex
NV-CCD-030409
8/2/2016 0600
Perimeter 7/31/2016 at 2208

Map 1

DIV L

Map 3

DIV X

Map 5

DIV I

Map 2

Map 4

DIV U


Map 6

DIV G

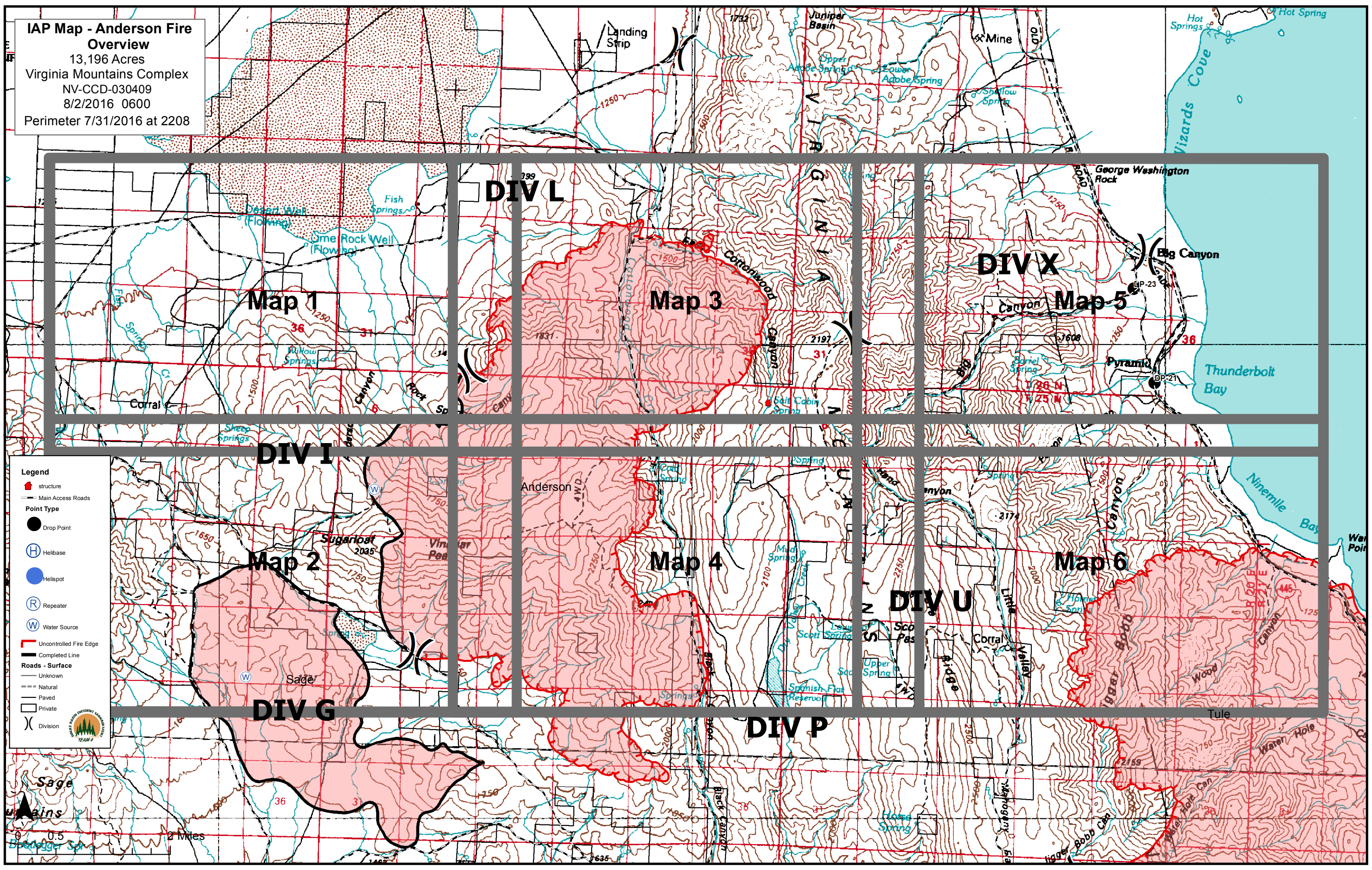

DIV P

Legend

- structure
- Main Access Roads
- Point Type
 - Drop Point
 - Helibase
 - Helispot
 - Repeater
 - Water Source
- Uncontrolled Fire Edge
- Completed Line
- Roads - Surface
 - Unknown
 - Natural
 - Paved
 - Private
- Division



Scale: 0, 0.5, 1, 2 Miles

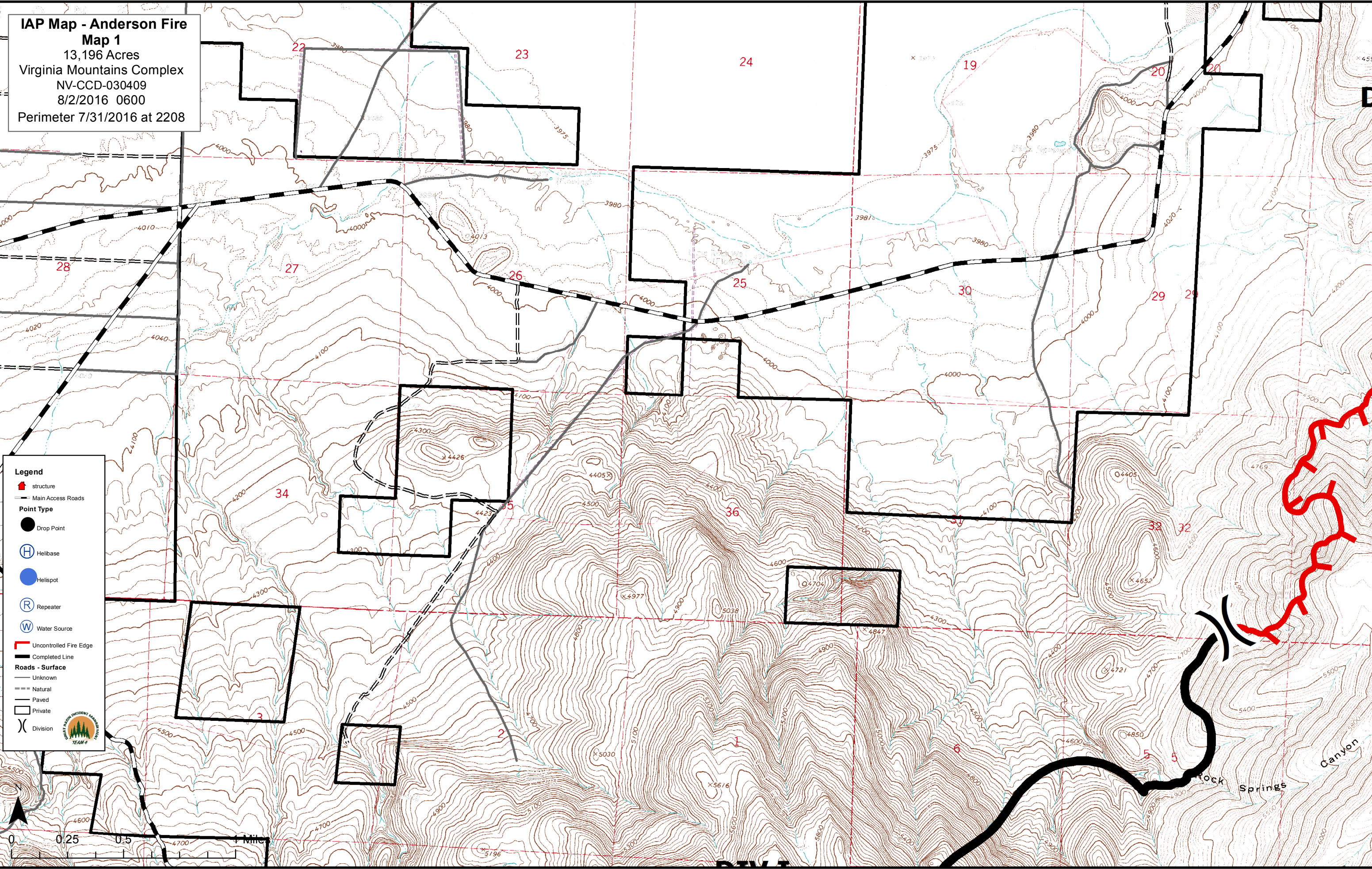
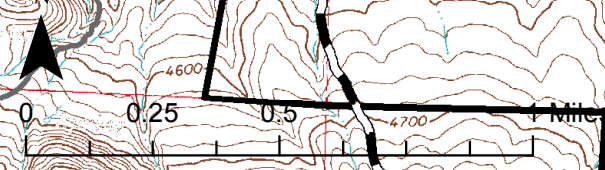


**IAP Map - Anderson Fire
Map 1**

13,196 Acres
Virginia Mountains Complex
NV-CCD-030409
8/2/2016 0600
Perimeter 7/31/2016 at 2208

Legend

- structure
- Main Access Roads
- Point Type**
- Drop Point
- Helibase
- Helispot
- Repeater
- Water Source
- Uncontrolled Fire Edge
- Completed Line
- Roads - Surface**
- Unknown
- Natural
- Paved
- Private
- Division



IAP Map - Anderson Fire
Map 2
13,196 Acres
Virginia Mountains Complex
NV-CCD-030409
8/2/2016 0600
Perimeter 7/31/2016 at 2208

DIV 1

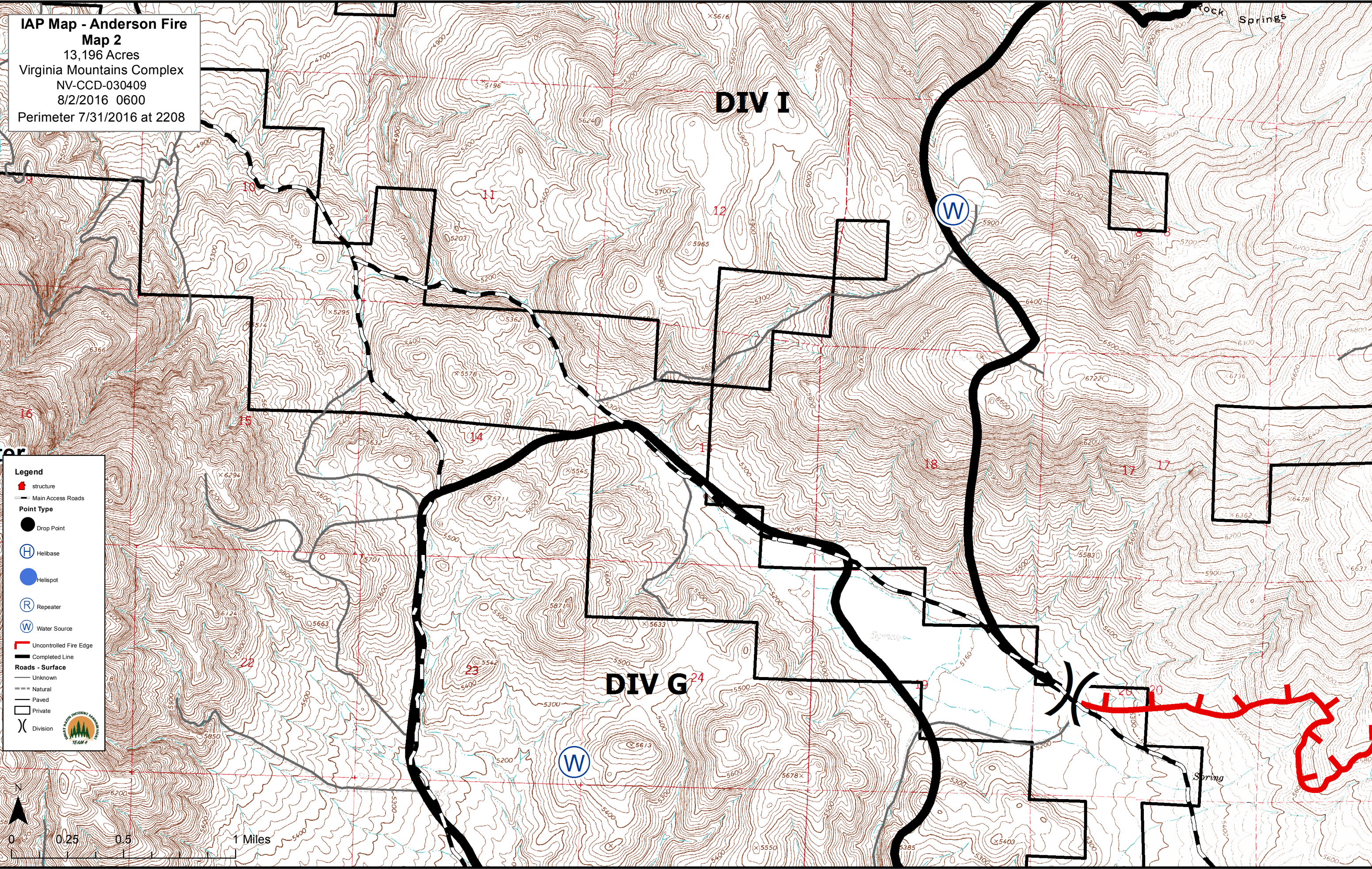
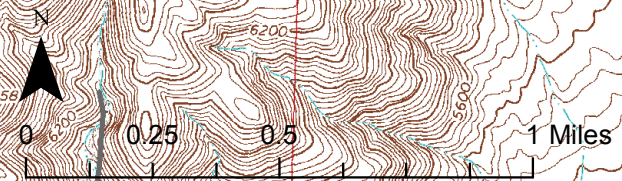

DIV G

Rock Springs

Spring

Legend

- structure
- Main Access Roads
- Point Type**
- Drop Point
- Helibase
- Helispot
- Repeater
- Water Source
- Uncontrolled Fire Edge
- Completed Line
- Roads - Surface**
- Unknown
- Natural
- Paved
- Private
- Division

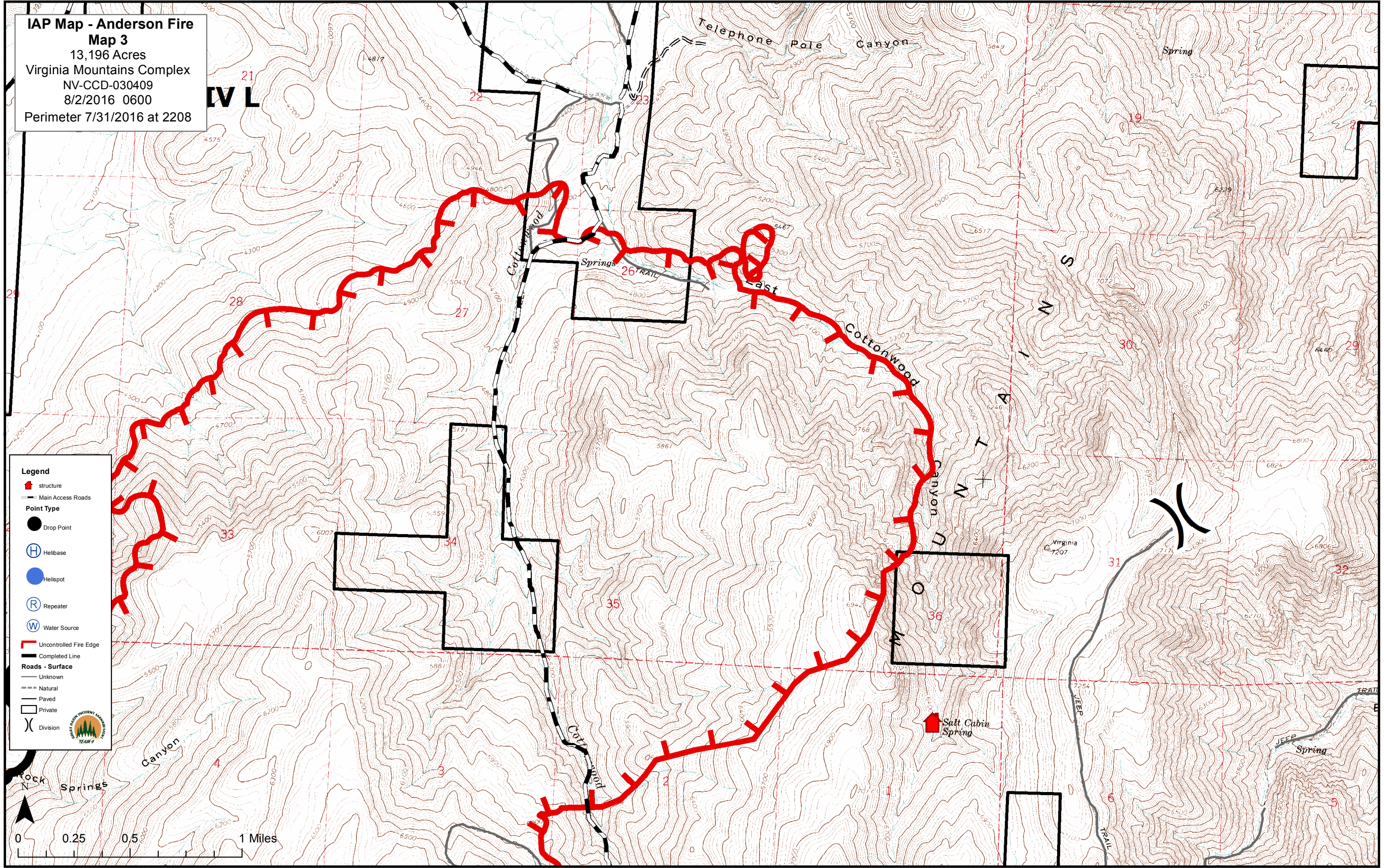
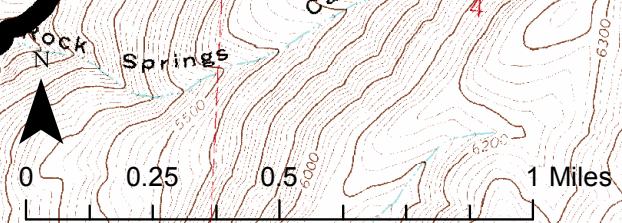



IAP Map - Anderson Fire
Map 3
13,196 Acres
Virginia Mountains Complex
NV-CCD-030409
8/2/2016 0600
Perimeter 7/31/2016 at 2208

IVL















Legend


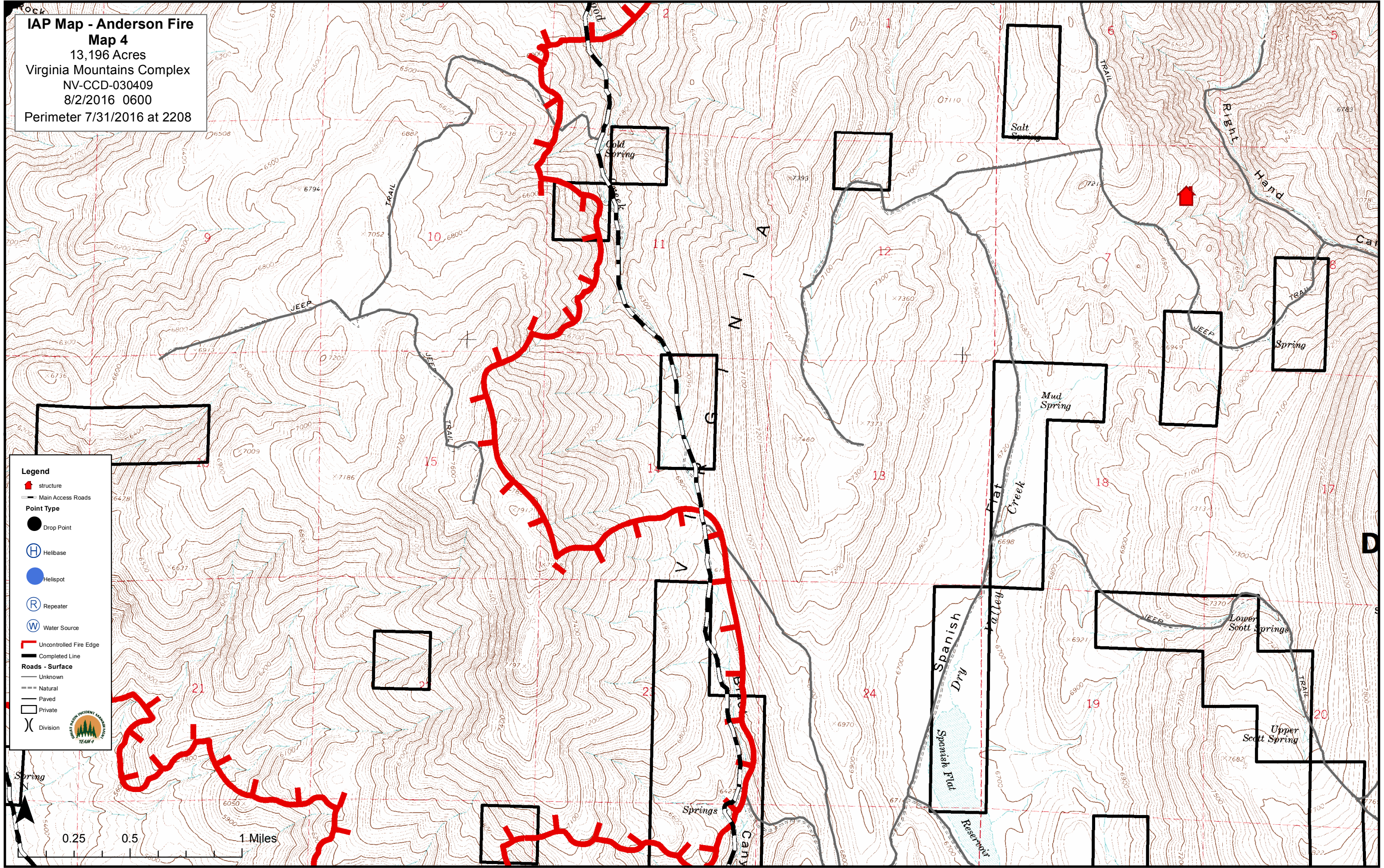
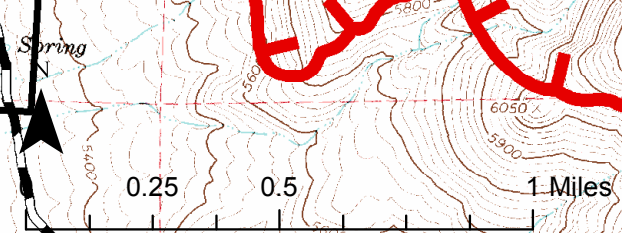
- structure
- Main Access Roads
- Point Type**
- Drop Point
- Helibase
- Helispot
- Repeater
- Water Source
- Uncontrolled Fire Edge
- Completed Line
- Roads - Surface**
- Unknown
- Natural
- Paved
- Private
- Division



IAP Map - Anderson Fire
Map 4
 13,196 Acres
 Virginia Mountains Complex
 NV-CCD-030409
 8/2/2016 0600
 Perimeter 7/31/2016 at 2208

Legend


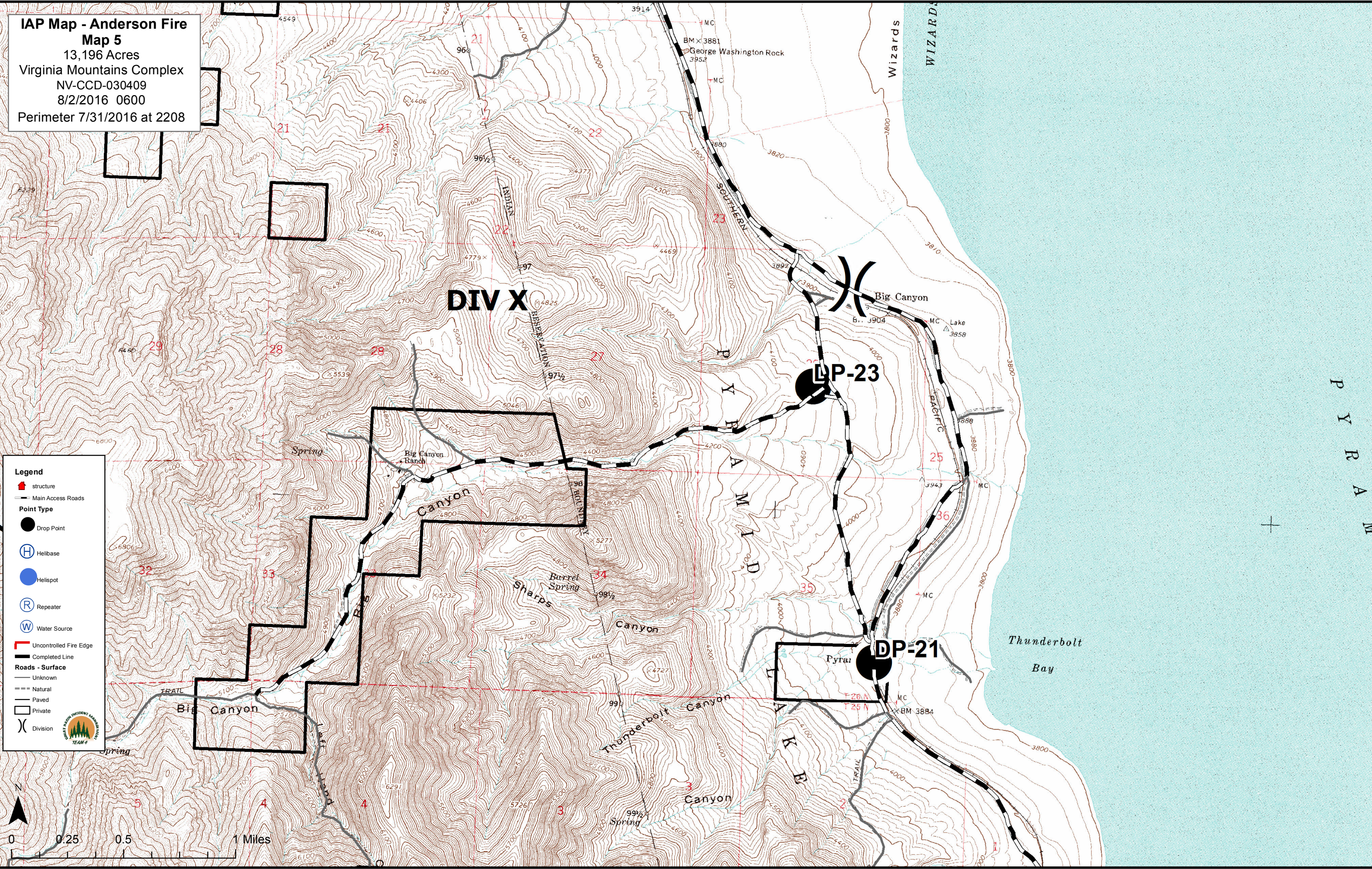
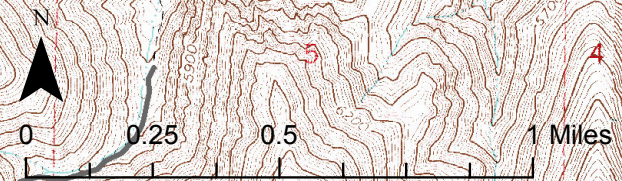
-  structure
-  Main Access Roads
- Point Type**
-  Drop Point
-  Helibase
-  Helispot
-  Repeater
-  Water Source
-  Uncontrolled Fire Edge
-  Completed Line
- Roads - Surface**
-  Unknown
-  Natural
-  Paved
-  Private
-  Division

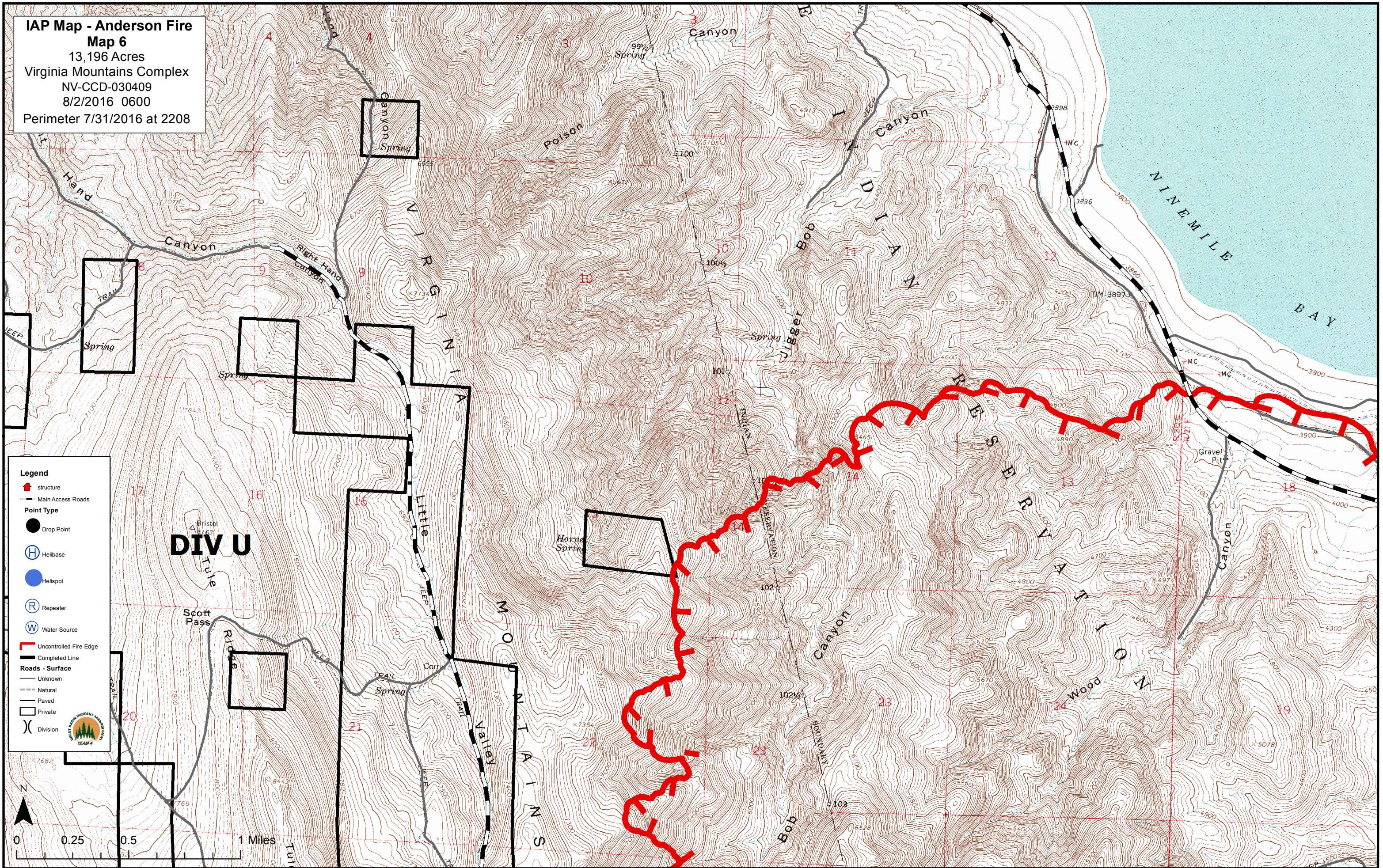
IAP Map - Anderson Fire
Map 5
 13,196 Acres
 Virginia Mountains Complex
 NV-CCD-030409
 8/2/2016 0600
 Perimeter 7/31/2016 at 2208

Legend

- structure
- Main Access Roads
- Point Type**
- Drop Point
- Helibase
- Helispot
- Repeater
- Water Source
- Uncontrolled Fire Edge
- Completed Line
- Roads - Surface**
- Unknown
- Natural
- Paved
- Private
- Division

IAP Map - Anderson Fire
Map 6
 13,196 Acres
 Virginia Mountains Complex
 NV-CCD-030409
 8/2/2016 0600
 Perimeter 7/31/2016 at 2208



Legend

- structure
- Main Access Roads
- Point Type**
- Drop Point
- Helibase
- Helispot
- Repeater
- Water Source
- Uncontrolled Fire Edge
- Completed Line
- Roads - Surface**
- Unknown
- Natural
- Paved
- Private
- Division

