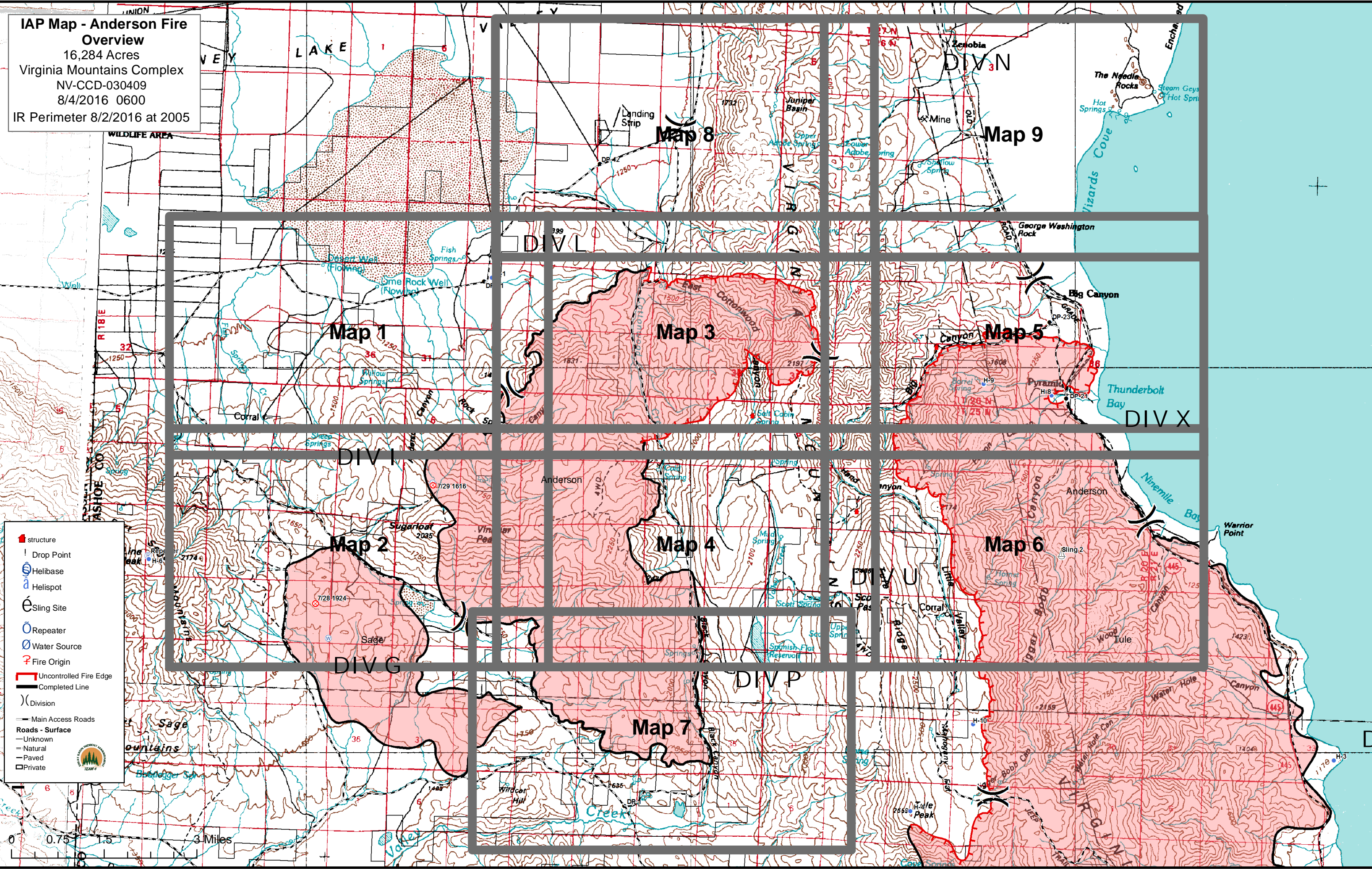
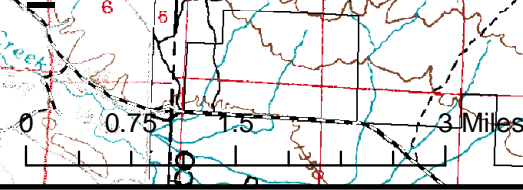
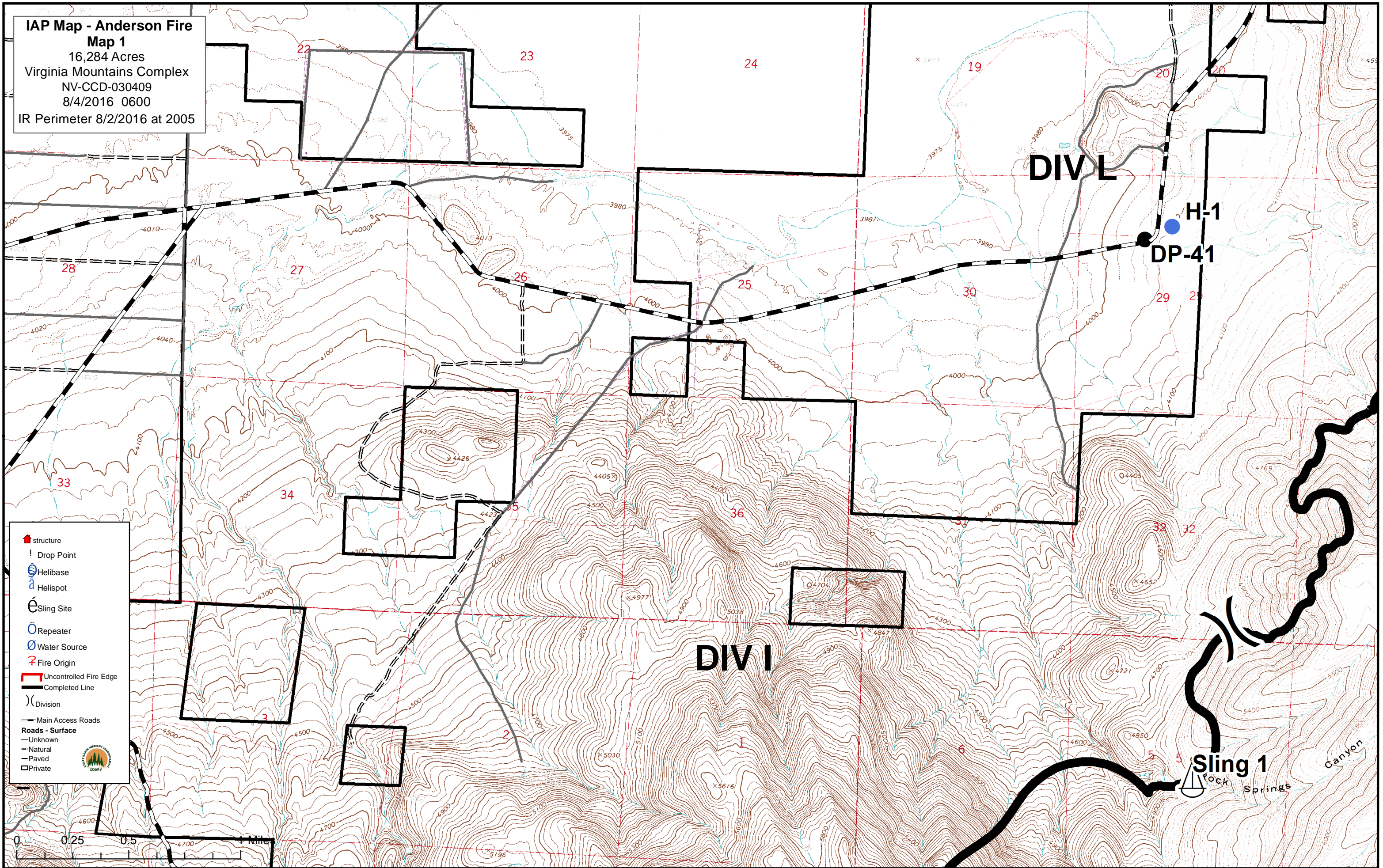


**IAP Map - Anderson Fire Overview**  
 16,284 Acres  
 Virginia Mountains Complex  
 NV-CCD-030409  
 8/4/2016 0600  
 IR Perimeter 8/2/2016 at 2005

- structure
- Drop Point
- Helibase
- Helispot
- Sling Site
- Repeater
- Water Source
- Fire Origin
- Uncontrolled Fire Edge
- Completed Line
- Division
- Main Access Roads
- Roads - Surface**
- Unknown
- Natural
- Paved
- Private



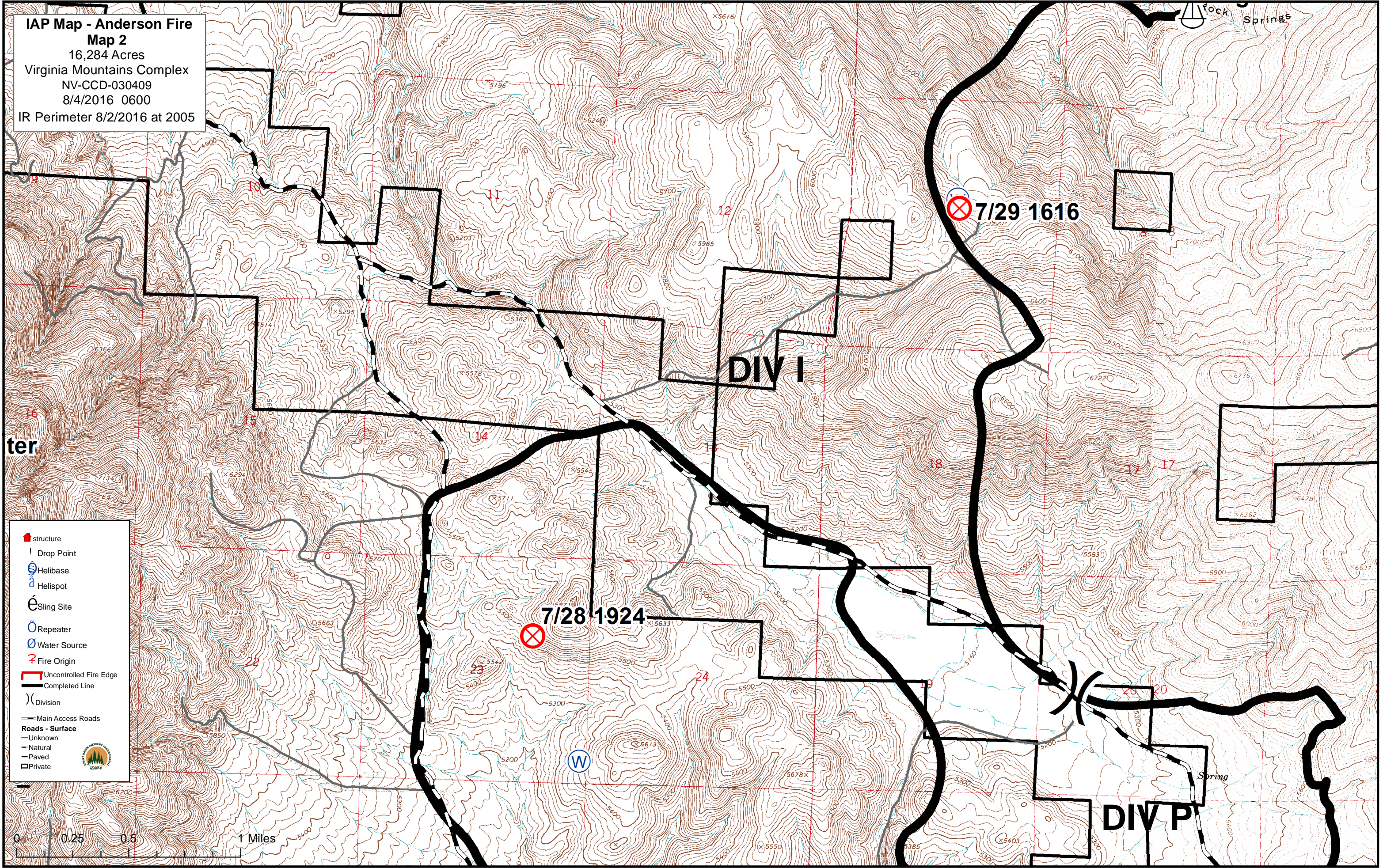
**IAP Map - Anderson Fire**  
**Map 1**  
 16,284 Acres  
 Virginia Mountains Complex  
 NV-CCD-030409  
 8/4/2016 0600  
 IR Perimeter 8/2/2016 at 2005



- structure
- Drop Point
- Helibase
- Helispot
- Sling Site
- Repeater
- Water Source
- Fire Origin
- Uncontrolled Fire Edge
- Completed Line
- Division
- Main Access Roads
- Roads - Surface**
- Unknown
- Natural
- Paved
- Private



**IAP Map - Anderson Fire**  
**Map 2**  
 16,284 Acres  
 Virginia Mountains Complex  
 NV-CCD-030409  
 8/4/2016 0600  
 IR Perimeter 8/2/2016 at 2005



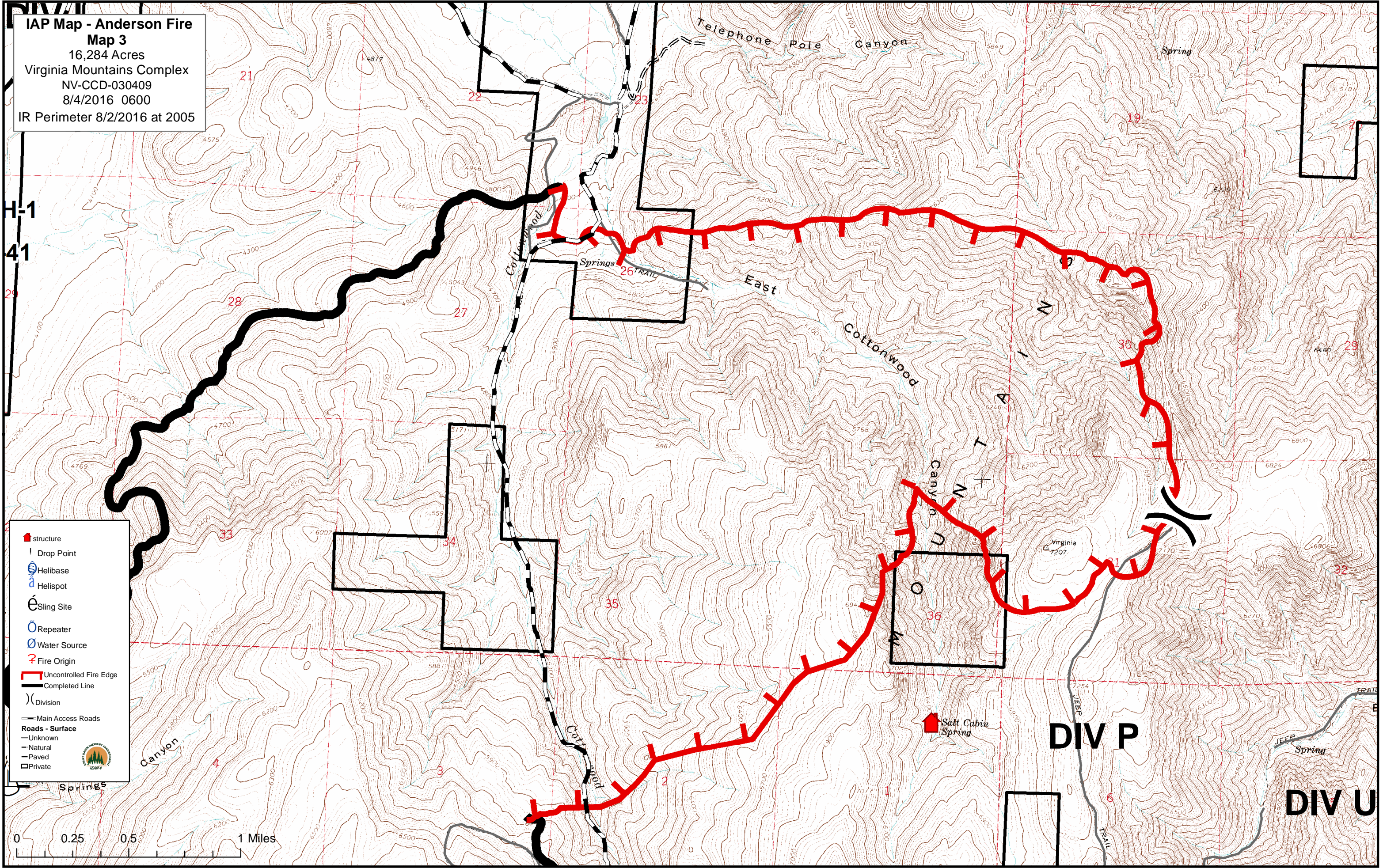
- structure
- Drop Point
- Helibase
- Helispot
- Sling Site
- Repeater
- Water Source
- Fire Origin
- Uncontrolled Fire Edge
- Completed Line
- Division
- Main Access Roads
- Roads - Surface**
- Unknown
- Natural
- Paved
- Private



**IAP Map - Anderson Fire**  
**Map 3**  
 16,284 Acres  
 Virginia Mountains Complex  
 NV-CCD-030409  
 8/4/2016 0600  
 IR Perimeter 8/2/2016 at 2005

H-1  
41

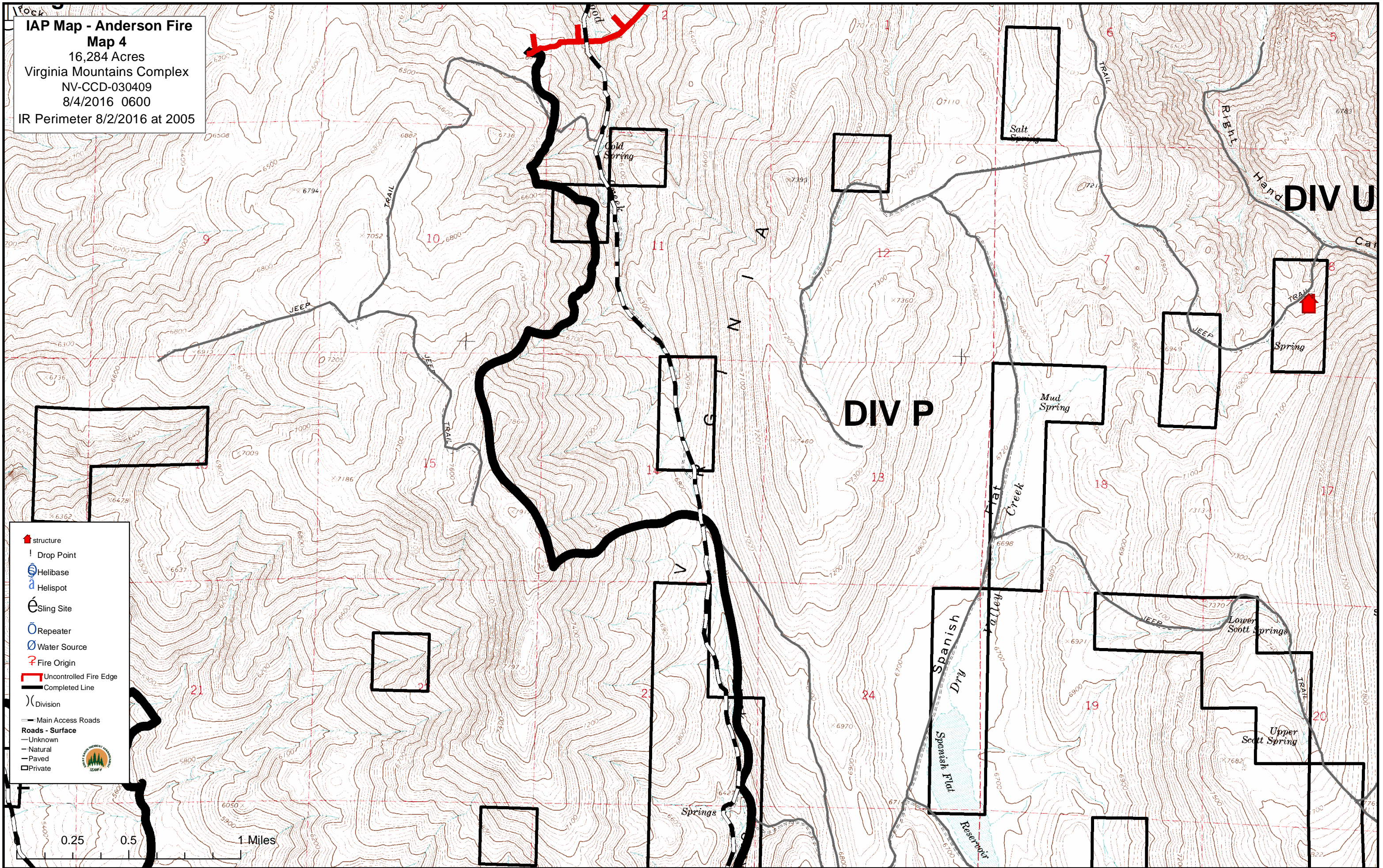
	structure
	Drop Point
	Helibase
	Helispot
	Sling Site
	Repeater
	Water Source
	Fire Origin
	Uncontrolled Fire Edge
	Completed Line
	Division
	Main Access Roads
	Roads - Surface
	Unknown
	Natural
	Paved
	Private



**DIV P**

**DIV U**

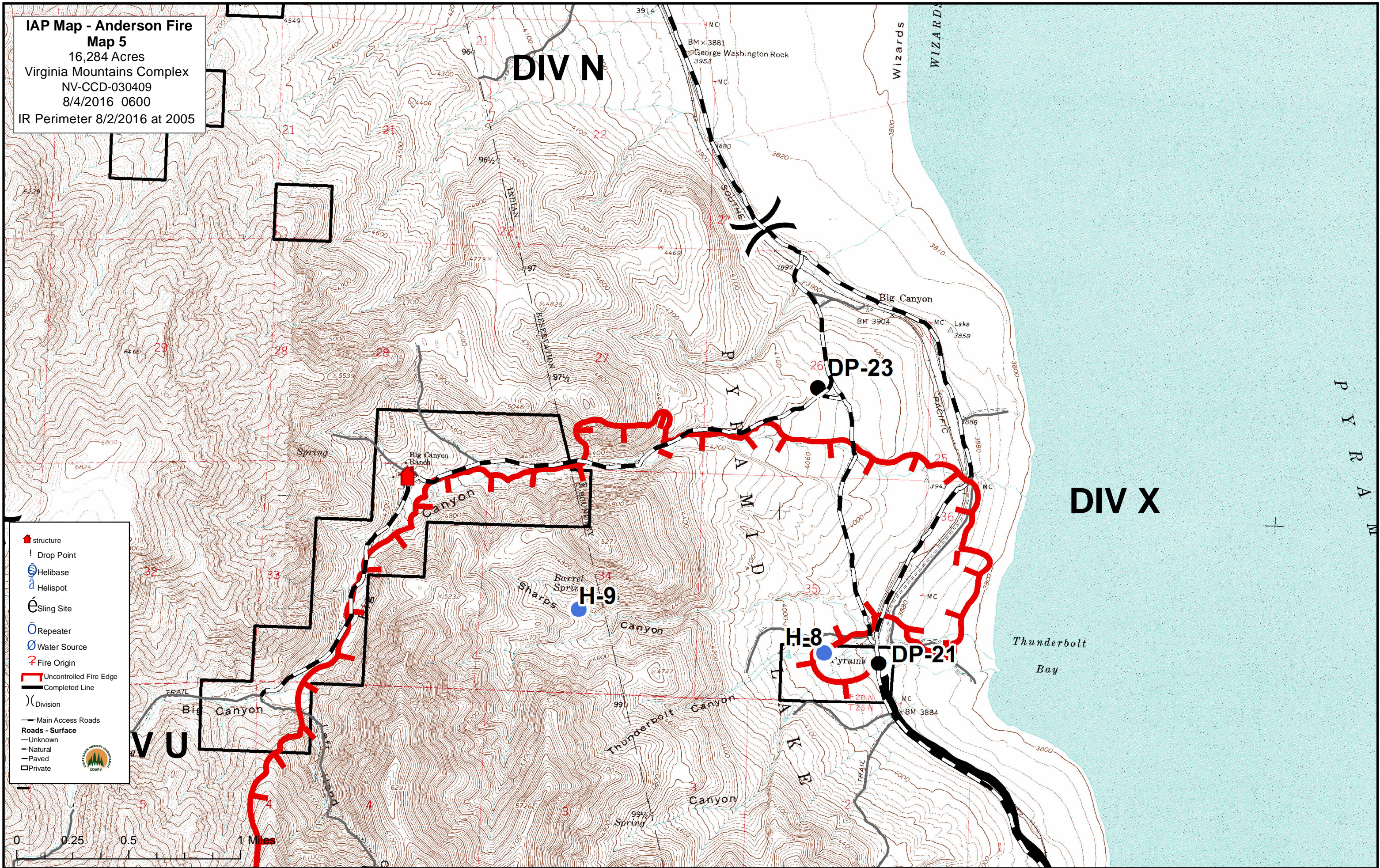
**IAP Map - Anderson Fire**  
**Map 4**  
 16,284 Acres  
 Virginia Mountains Complex  
 NV-CCD-030409  
 8/4/2016 0600  
 IR Perimeter 8/2/2016 at 2005



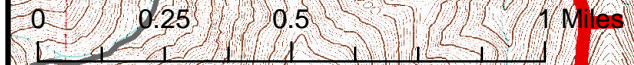
- structure
- Drop Point
- Helibase
- Helispot
- Slingsite
- Repeater
- Water Source
- Fire Origin
- Uncontrolled Fire Edge
- Completed Line
- Division
- Main Access Roads
- Roads - Surface**
  - Unknown
  - Natural
  - Paved
  - Private

0.25 0.5 1 Miles

**IAP Map - Anderson Fire**  
**Map 5**  
 16,284 Acres  
 Virginia Mountains Complex  
 NV-CCD-030409  
 8/4/2016 0600  
 IR Perimeter 8/2/2016 at 2005



- structure
- Drop Point
- Helibase
- Helispot
- Sling Site
- Repeater
- Water Source
- Fire Origin
- Uncontrolled Fire Edge
- Completed Line
- Division
- Main Access Roads
- Roads - Surface**
- Unknown
- Natural
- Paved
- Private


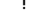

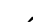







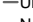
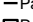





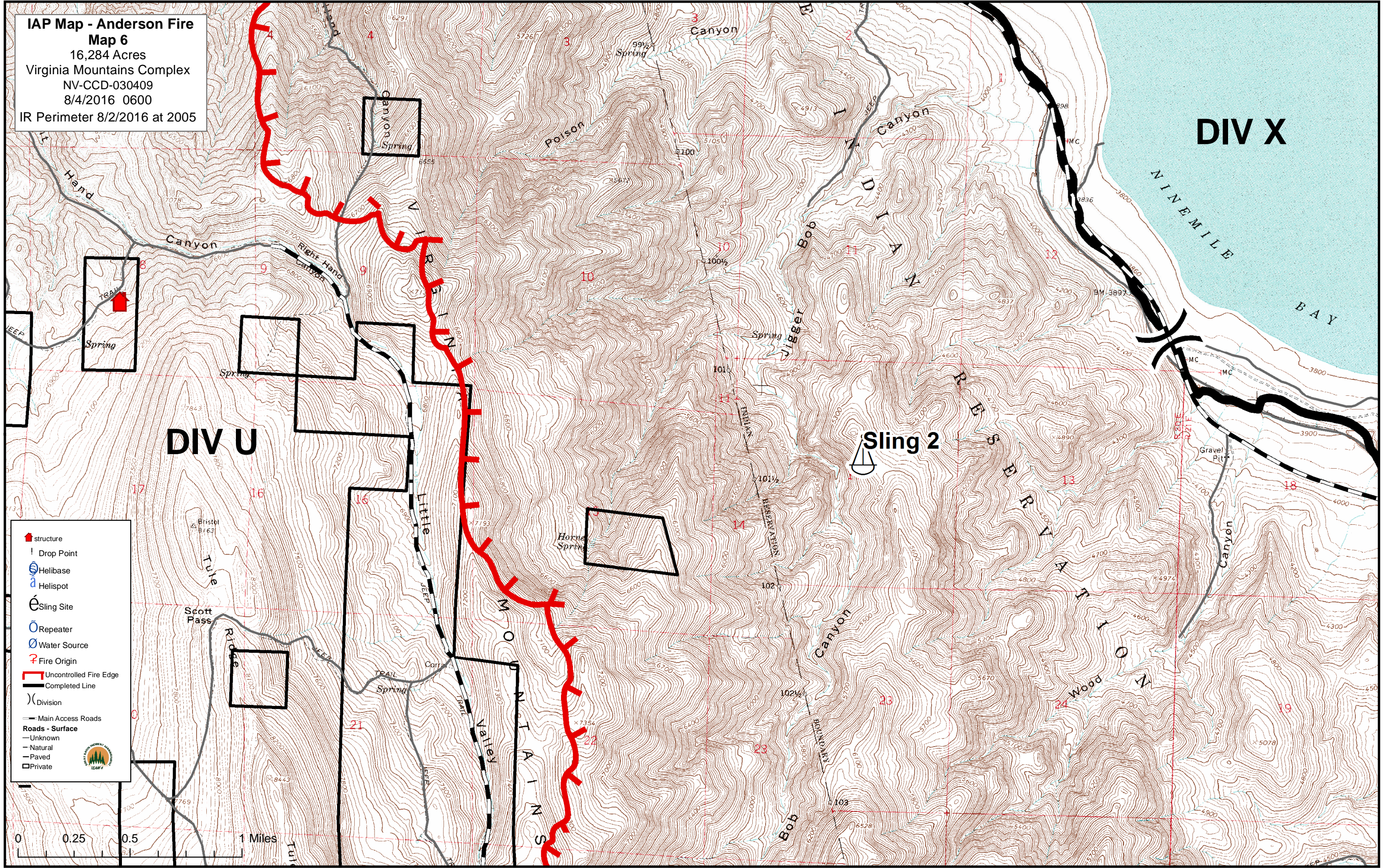
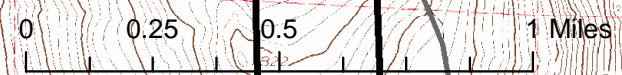
**IAP Map - Anderson Fire**  
**Map 6**  
 16,284 Acres  
 Virginia Mountains Complex  
 NV-CCD-030409  
 8/4/2016 0600  
 IR Perimeter 8/2/2016 at 2005

**DIV X**

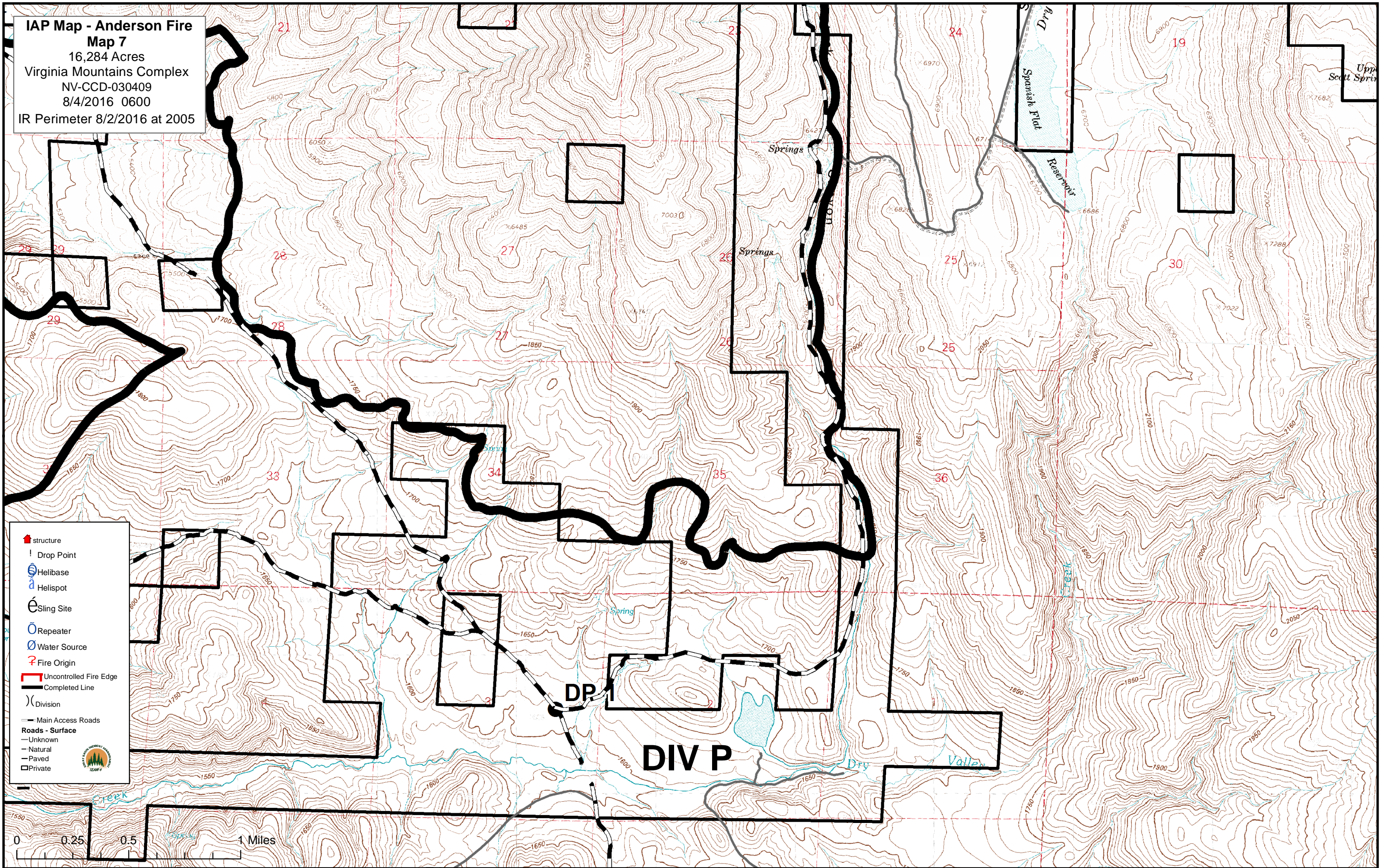
**DIV U**

**Sling 2**

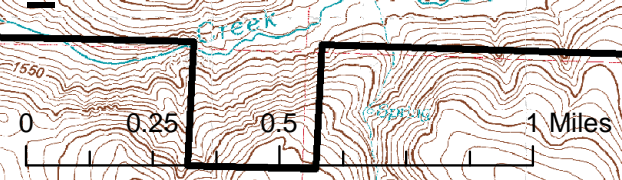
-  structure
-  Drop Point
-  Helibase
-  Helispot
-  Sling Site
-  Repeater
-  Water Source
-  Fire Origin
-  Uncontrolled Fire Edge
-  Completed Line
-  Division
-  Main Access Roads
- Roads - Surface**
-  Unknown
-  Natural
-  Paved
-  Private



**IAP Map - Anderson Fire**  
**Map 7**  
 16,284 Acres  
 Virginia Mountains Complex  
 NV-CCD-030409  
 8/4/2016 0600  
 IR Perimeter 8/2/2016 at 2005



- structure
- ! Drop Point
- ⊙ Helibase
- ⊙ Helispot
- ⊙ Sling Site
- ⊙ Repeater
- ⊙ Water Source
- ⊙ Fire Origin
- Uncontrolled Fire Edge
- Completed Line
- ) Division
- Main Access Roads
- Roads - Surface
- Unknown
- Natural
- Paved
- Private





**IAP Map - Anderson Fire**  
**Map 8**  
 16,284 Acres  
 Virginia Mountains Complex  
 NV-CCD-030409  
 8/4/2016 0600  
 IR Perimeter 8/2/2016 at 2005

N  
E  
Y

V  
I  
R  
G  
I  
N  
I  
A  
M  
O  
U  
N  
T  
A  
I  
N  
S


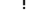









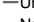
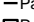



**DIV N**

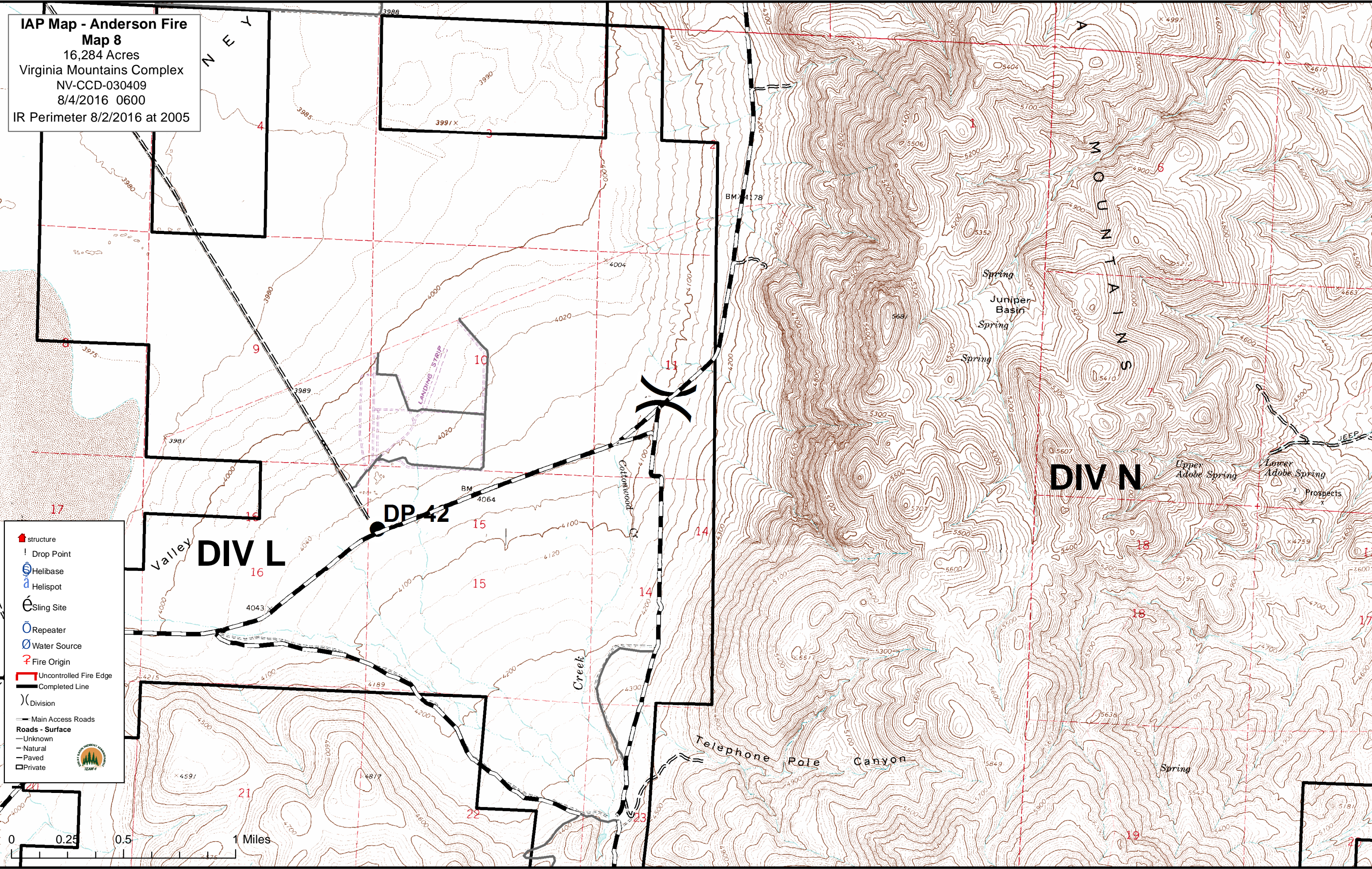
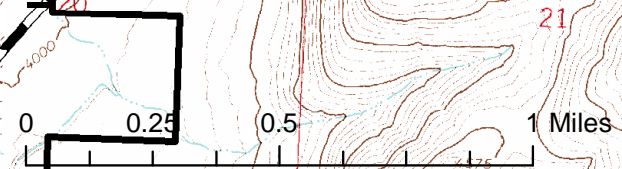
Valley **DIV L**

**DP 42**


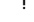









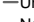
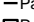



Creek

Telephone Pole Canyon

-  structure
-  Drop Point
-  Helibase
-  Helispot
-  Sling Site
-  Repeater
-  Water Source
-  Fire Origin
-  Uncontrolled Fire Edge
-  Completed Line
-  Division
-  Main Access Roads
- Roads - Surface**
-  Unknown
-  Natural
-  Paved
-  Private



**IAP Map - Anderson Fire**  
**Map 9**  
 16,284 Acres  
 Virginia Mountains Complex  
 NV-CCD-030409  
 8/4/2016 0600  
 IR Perimeter 8/2/2016 at 2005

-  structure
-  Drop Point
-  Helibase
-  Helispot
-  Slingsite
-  Repeater
-  Water Source
-  Fire Origin
-  Uncontrolled Fire Edge
-  Completed Line
-  Division
-  Main Access Roads
- Roads - Surface**
-  Unknown
-  Natural
-  Paved
-  Private

