










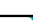

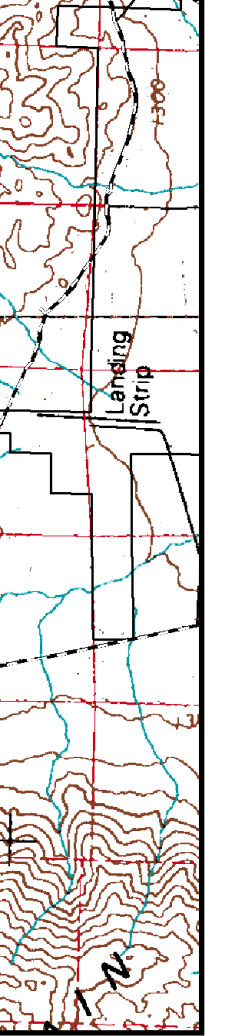
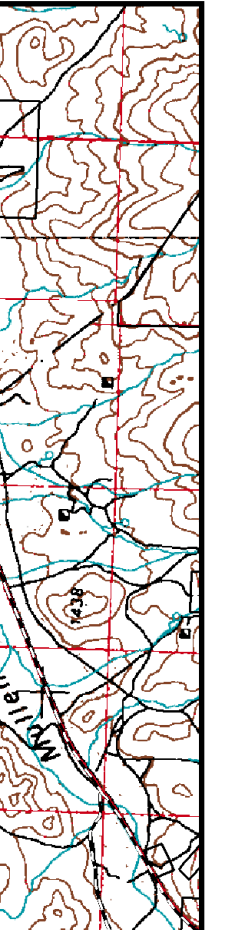
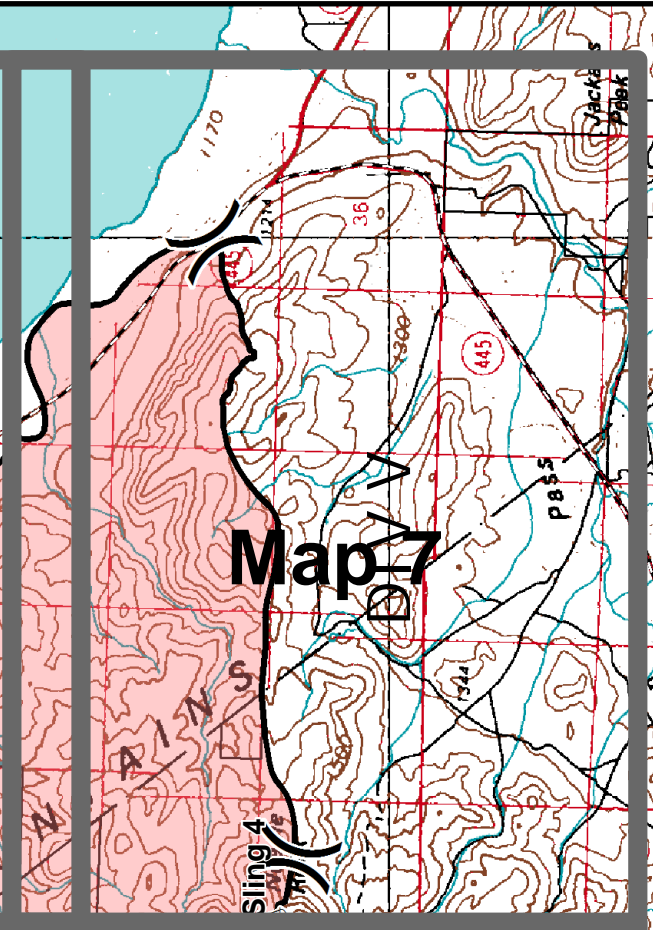
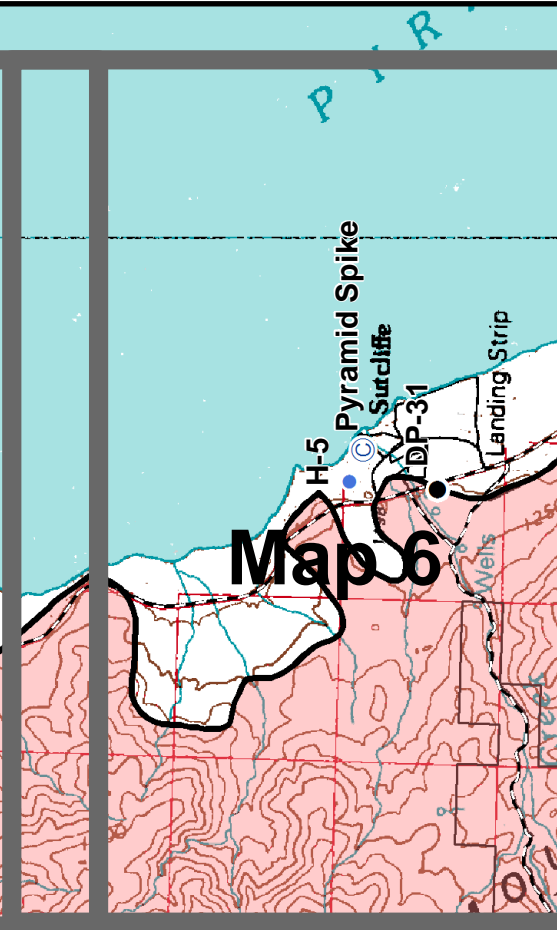
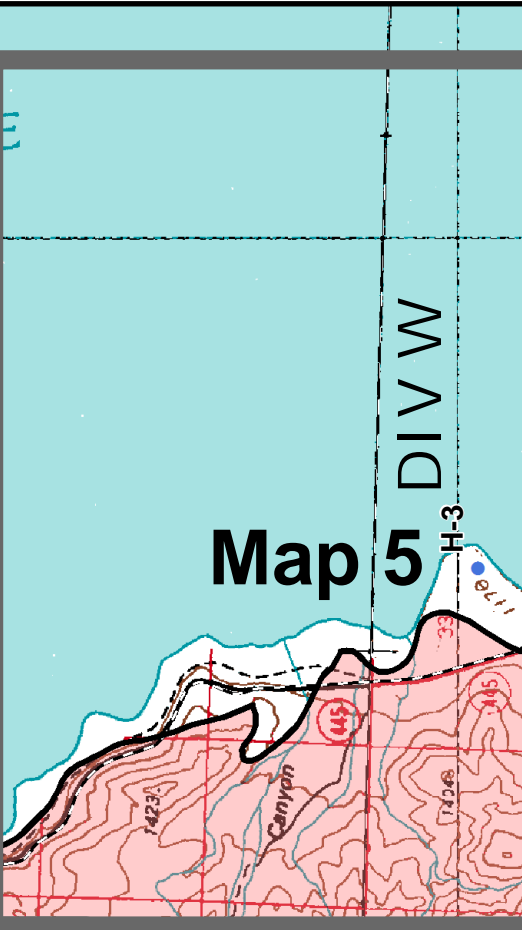
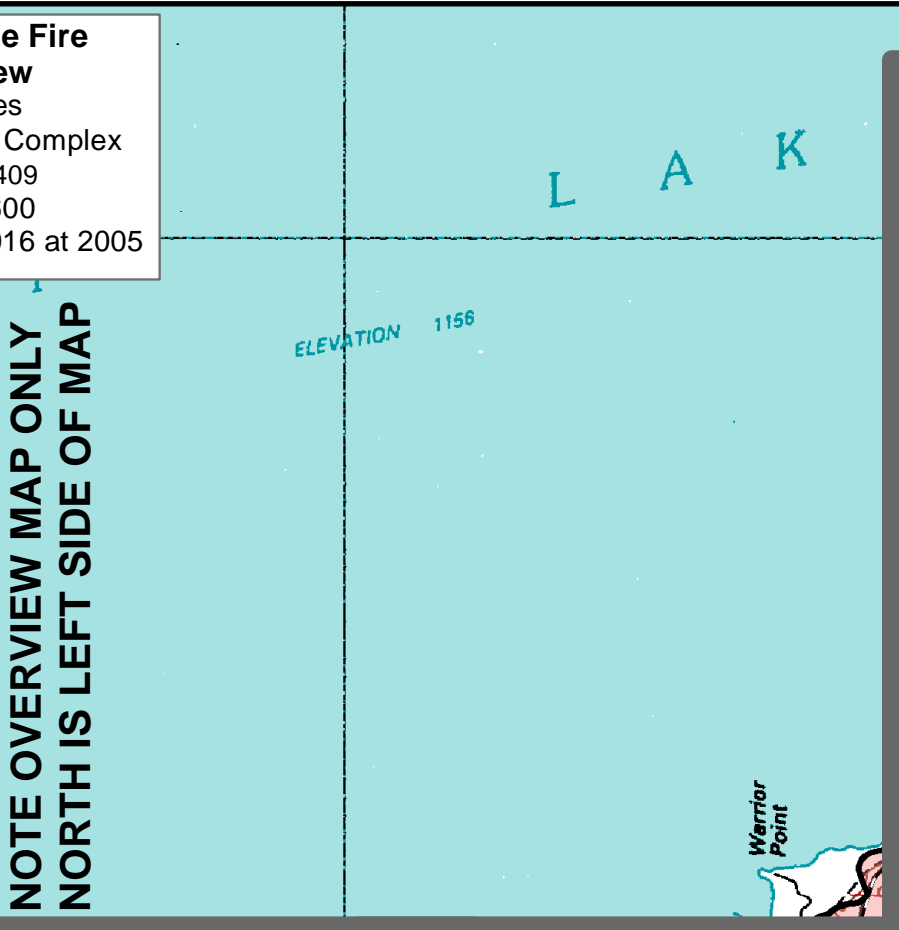
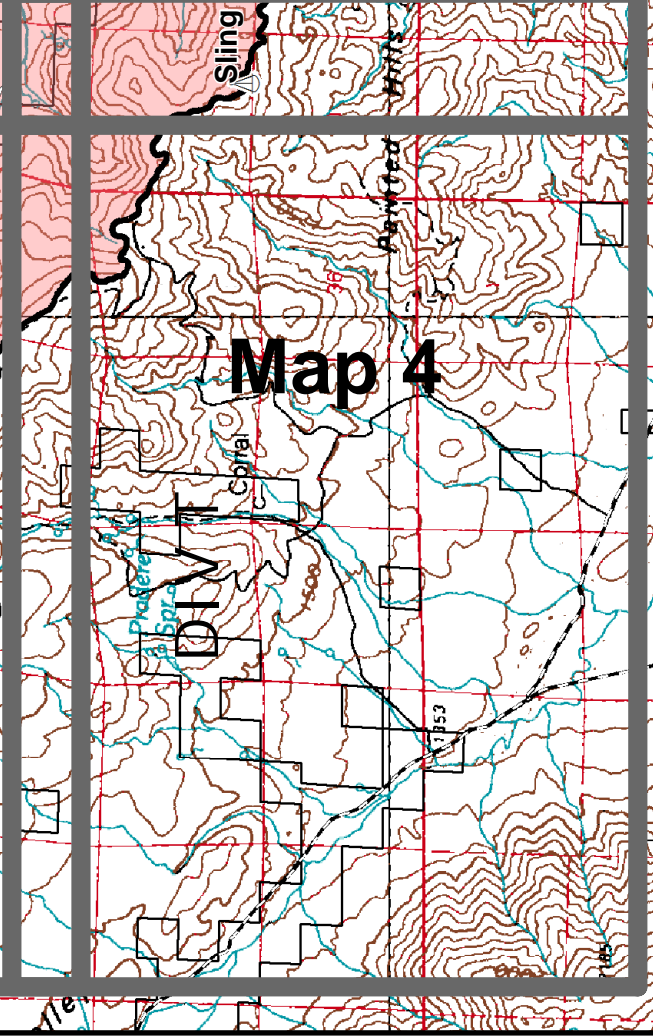
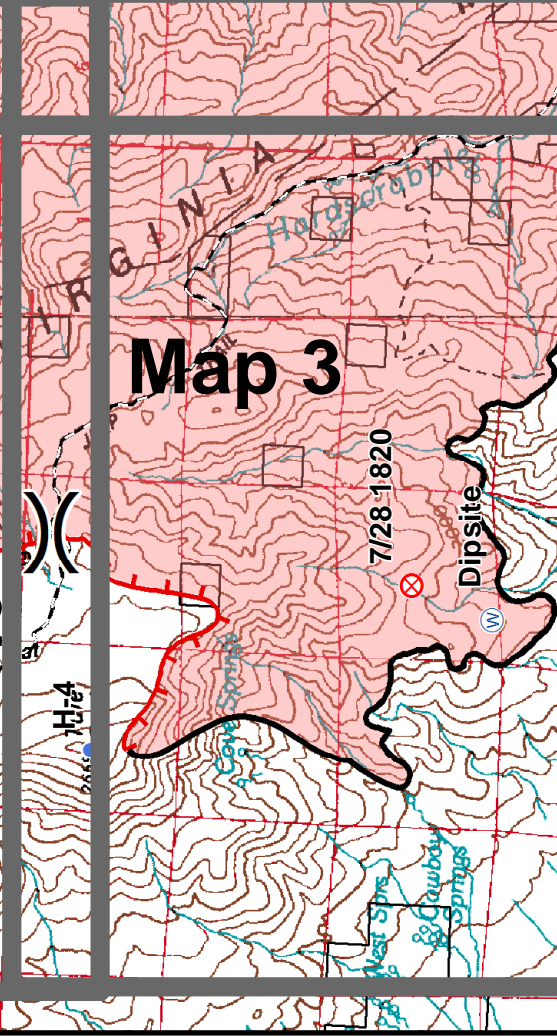
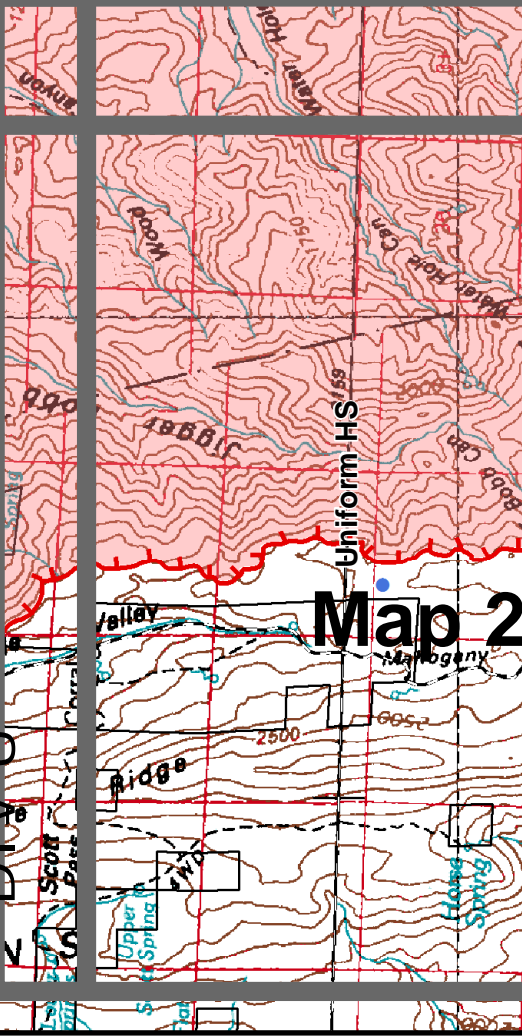
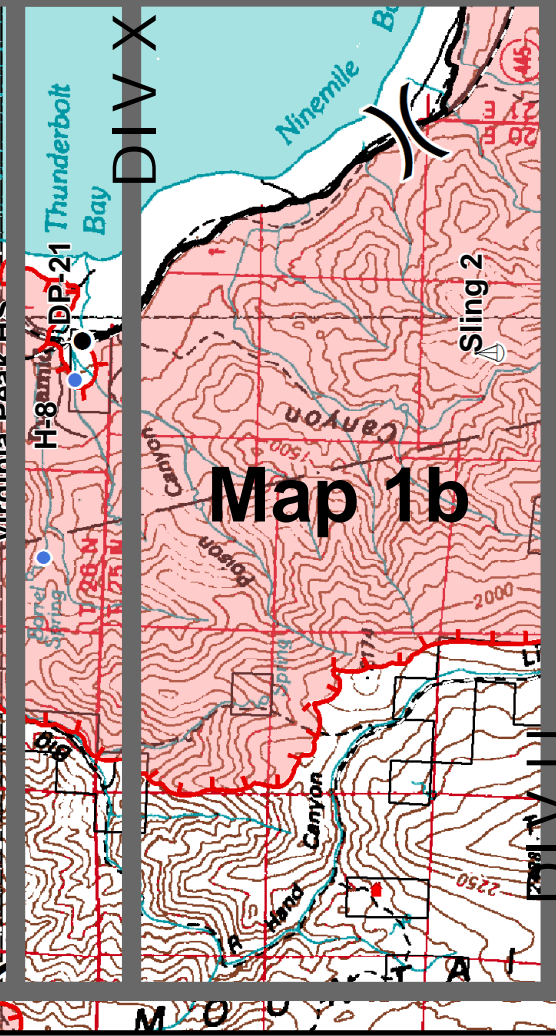
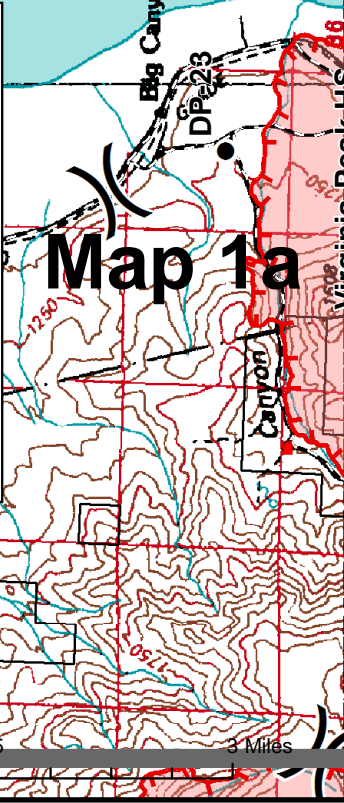
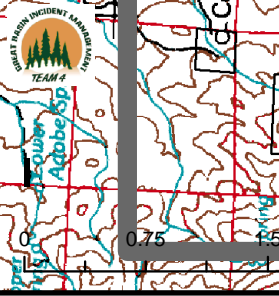


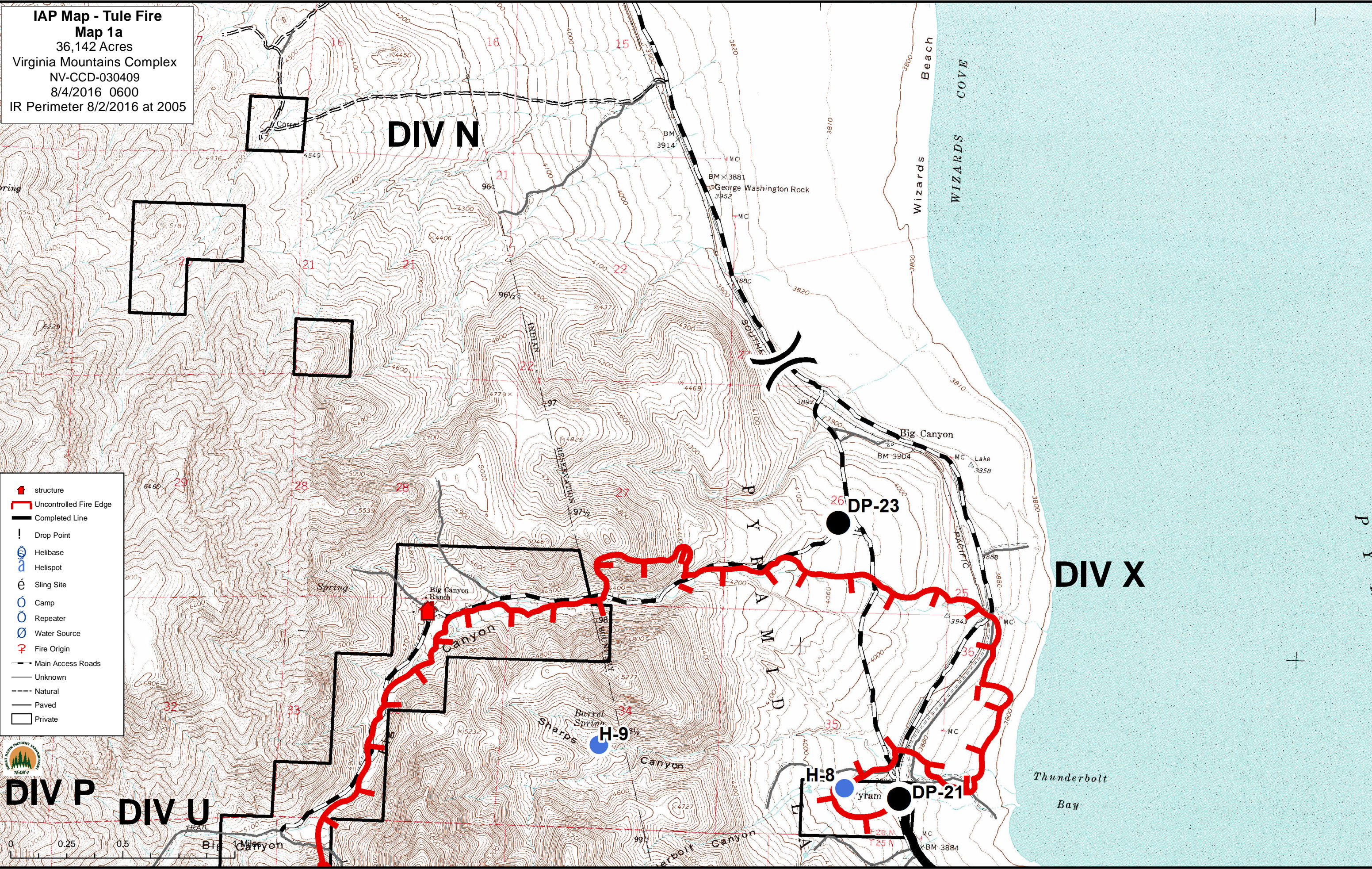
IAP Map - Tule Fire Overview
 36,142 Acres
 Virginia Mountains Complex
 NV-CCD-030409
 8/4/2016 0600
 IR Perimeter 8/2/2016 at 2005

**NOTE OVERVIEW MAP ONLY
 NORTH IS LEFT SIDE OF MAP**

-  structure
-  Uncontrolled Fire Edge
-  Completed Line
-  Drop Point
-  Helibase
-  Helispot
-  Sling Site
-  Camp
-  Repeater
-  Water Source
-  Fire Origin
-  Main Access Roads
-  Private



IAP Map - Tule Fire
Map 1a
 36,142 Acres
 Virginia Mountains Complex
 NV-CCD-030409
 8/4/2016 0600
 IR Perimeter 8/2/2016 at 2005



- structure
- Uncontrolled Fire Edge
- Completed Line
- Drop Point
- Helibase
- Helispot
- Sling Site
- Camp
- Repeater
- Water Source
- Fire Origin
- Main Access Roads
- Unknown
- Natural
- Paved
- Private



DIV P **DIV U**

DIV N

DIV X

DP-23

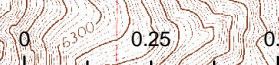
H-9

H-8

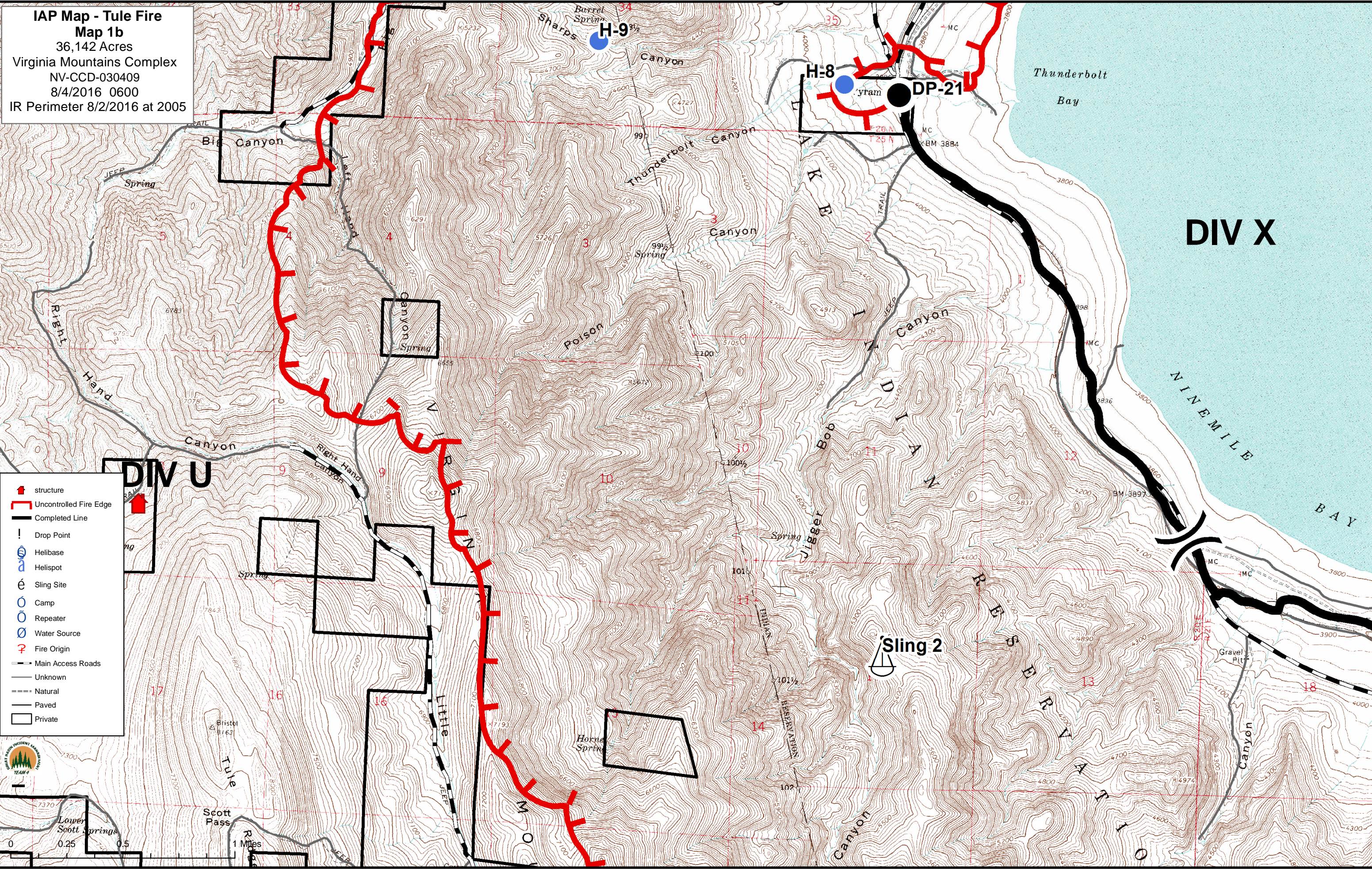
DP-21

Wizard's Beach
WIZARDS COVE

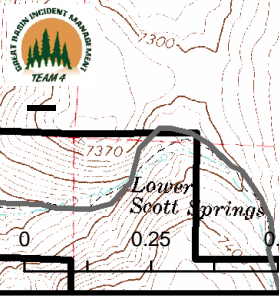
Thunderbolt Bay



IAP Map - Tule Fire
Map 1b
 36,142 Acres
 Virginia Mountains Complex
 NV-CCD-030409
 8/4/2016 0600
 IR Perimeter 8/2/2016 at 2005



- structure
- Uncontrolled Fire Edge
- Completed Line
- Drop Point
- Helibase
- Helispot
- Sling Site
- Camp
- Repeater
- Water Source
- Fire Origin
- Main Access Roads
- Unknown
- Natural
- Paved
- Private

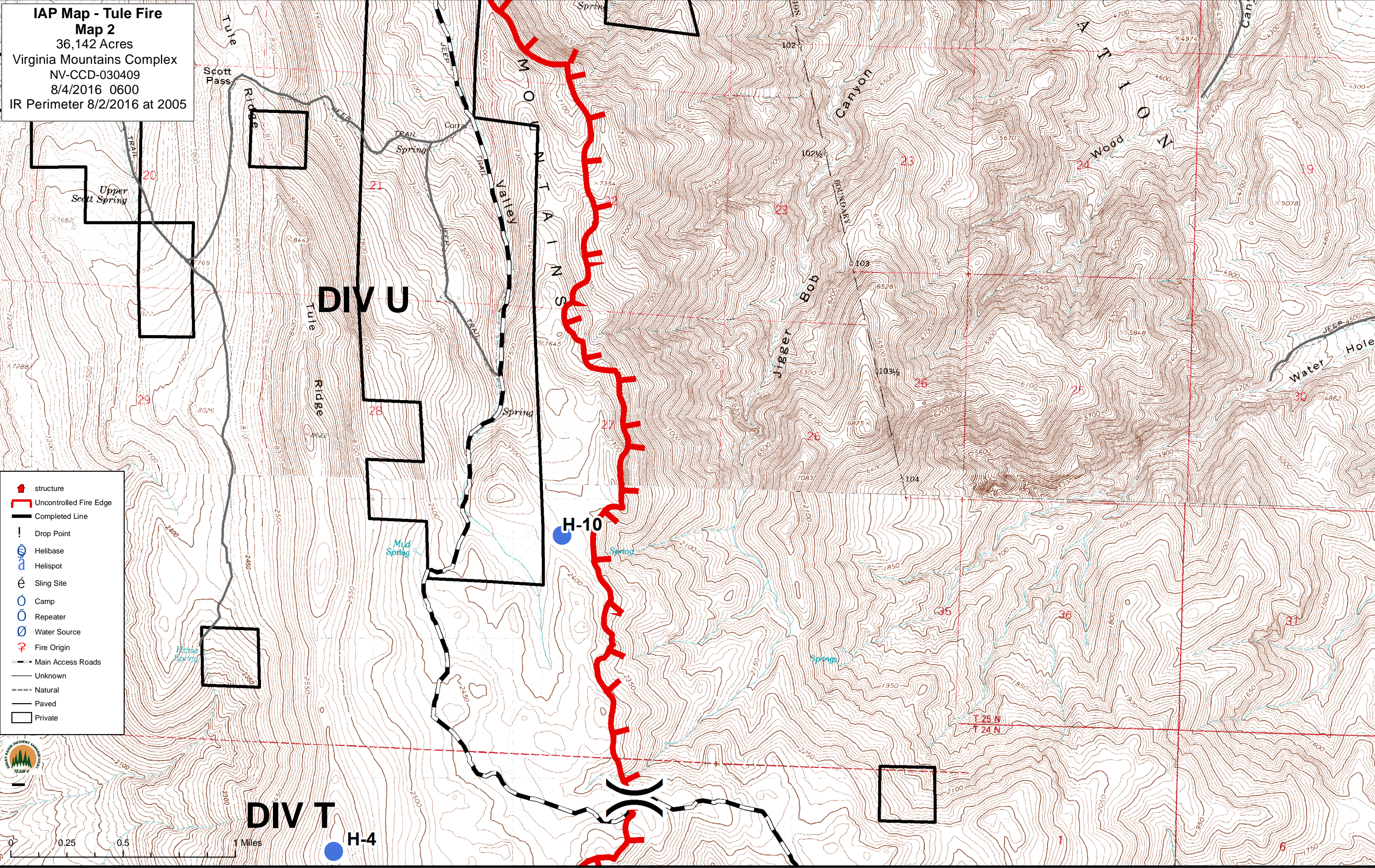


DIV X

DIV U

Sling 2

IAP Map - Tule Fire
Map 2
 36,142 Acres
 Virginia Mountains Complex
 NV-CCD-030409
 8/4/2016 0600
 IR Perimeter 8/2/2016 at 2005



- structure
- Uncontrolled Fire Edge
- Completed Line
- Drop Point
- Helibase
- Helispot
- Sling Site
- Camp
- Repeater
- Water Source
- Fire Origin
- Main Access Roads
- Unknown
- Natural
- Paved
- Private

TEAM #

0 0.25 0.5 1 Miles

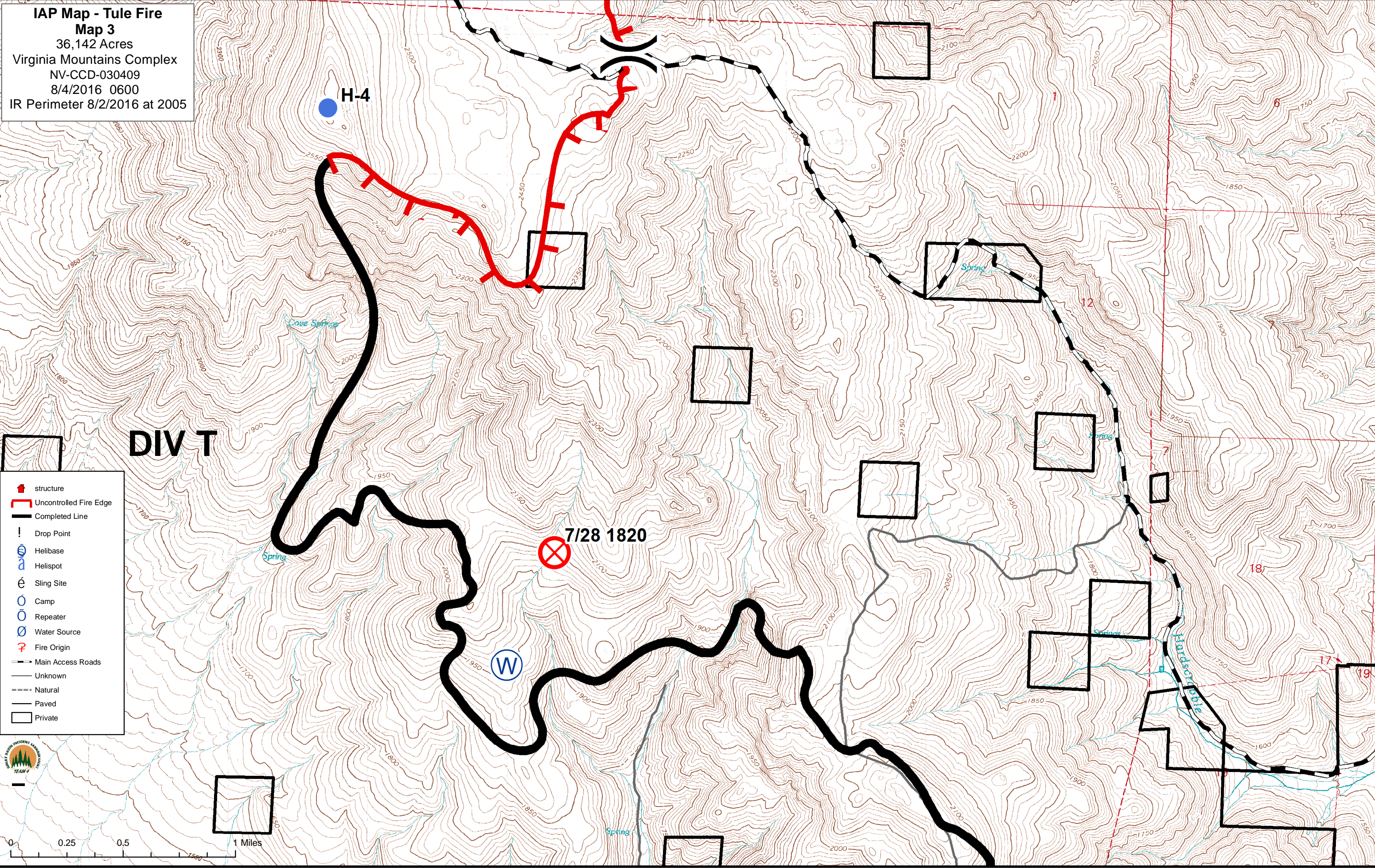
DIV U

















DIV T

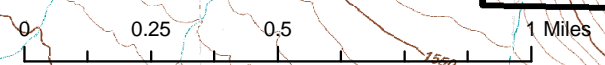
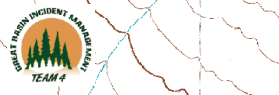
H-10

H-4

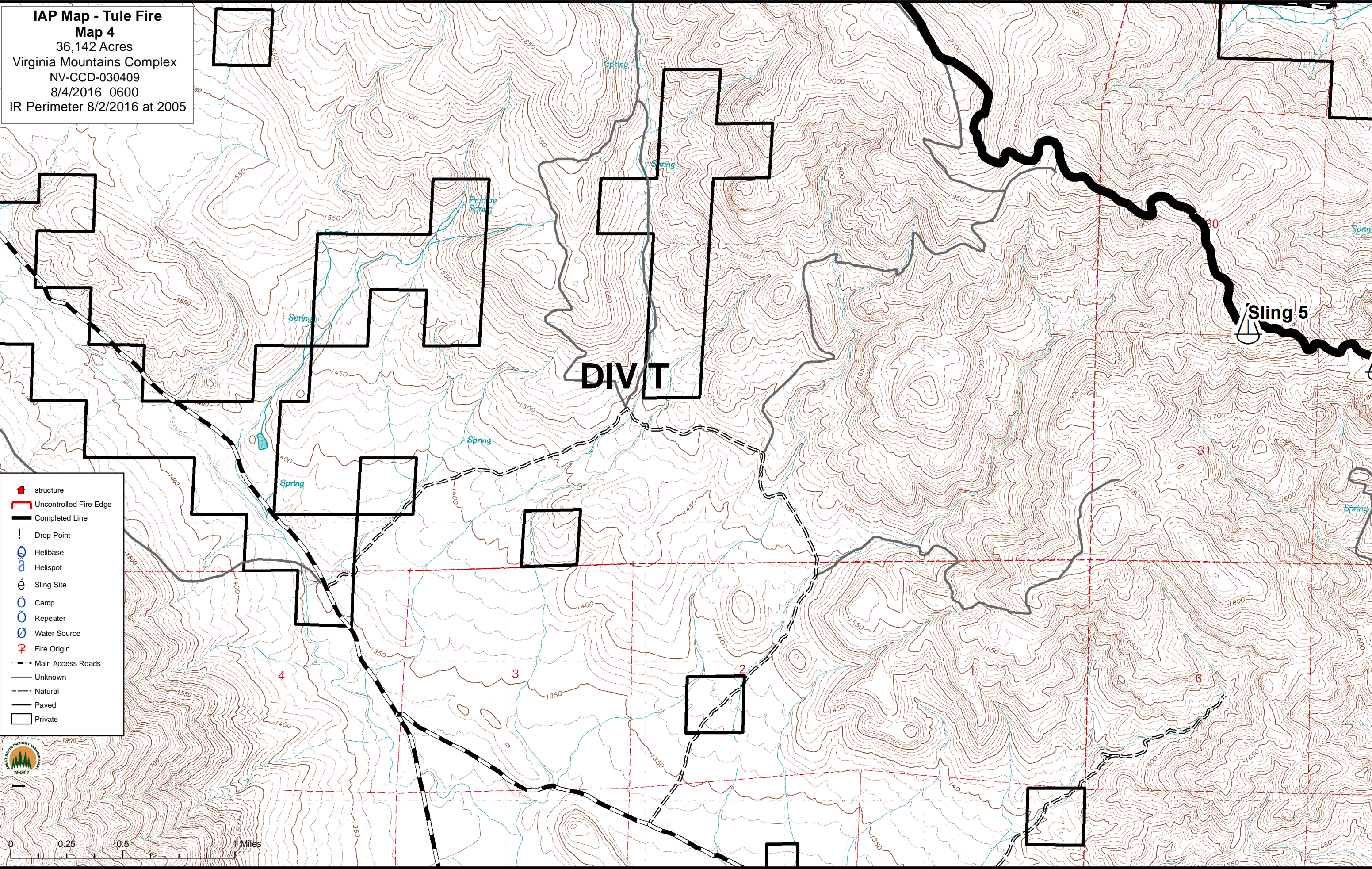
IAP Map - Tule Fire
Map 3
 36,142 Acres
 Virginia Mountains Complex
 NV-CCD-030409
 8/4/2016 0600
 IR Perimeter 8/2/2016 at 2005



-  structure
-  Uncontrolled Fire Edge
-  Completed Line
-  Drop Point
-  Helibase
-  Helispot
-  Sling Site
-  Camp
-  Repeater
-  Water Source
-  Fire Origin
-  Main Access Roads
-  Unknown
-  Natural
-  Paved
-  Private



IAP Map - Tule Fire
Map 4
 36,142 Acres
 Virginia Mountains Complex
 NV-CCD-030409
 8/4/2016 0600
 IR Perimeter 8/2/2016 at 2005

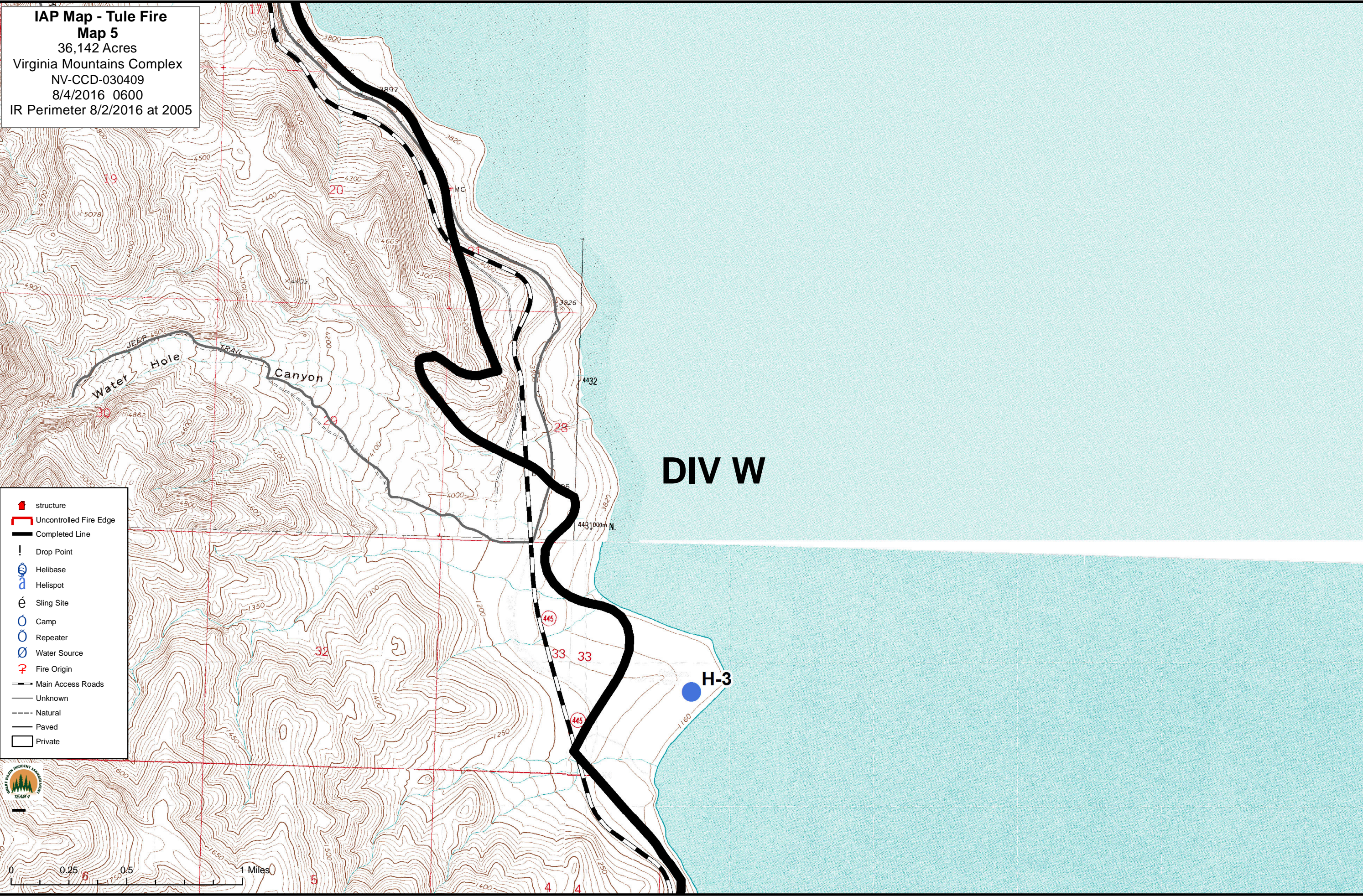


- structure
- Uncontrolled Fire Edge
- Completed Line
- Drop Point
- Helibase
- Helispot
- Sling Site
- Camp
- Repeater
- Water Source
- Fire Origin
- Main Access Roads
- Unknown
- Natural
- Paved
- Private

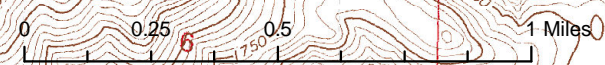
NEVADA DEPARTMENT OF FORESTRY
 VIRGINIA MOUNTAINS COMPLEX INCIDENT MANAGEMENT TEAM 4

0 0.25 0.5 1 Miles








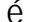








IAP Map - Tule Fire
Map 5
 36,142 Acres
 Virginia Mountains Complex
 NV-CCD-030409
 8/4/2016 0600
 IR Perimeter 8/2/2016 at 2005




- structure
- Uncontrolled Fire Edge
- Completed Line
- Drop Point
- Helibase
- Helispot
- Sling Site
- Camp
- Repeater
- Water Source
- Fire Origin
- Main Access Roads
- Unknown
- Natural
- Paved
- Private

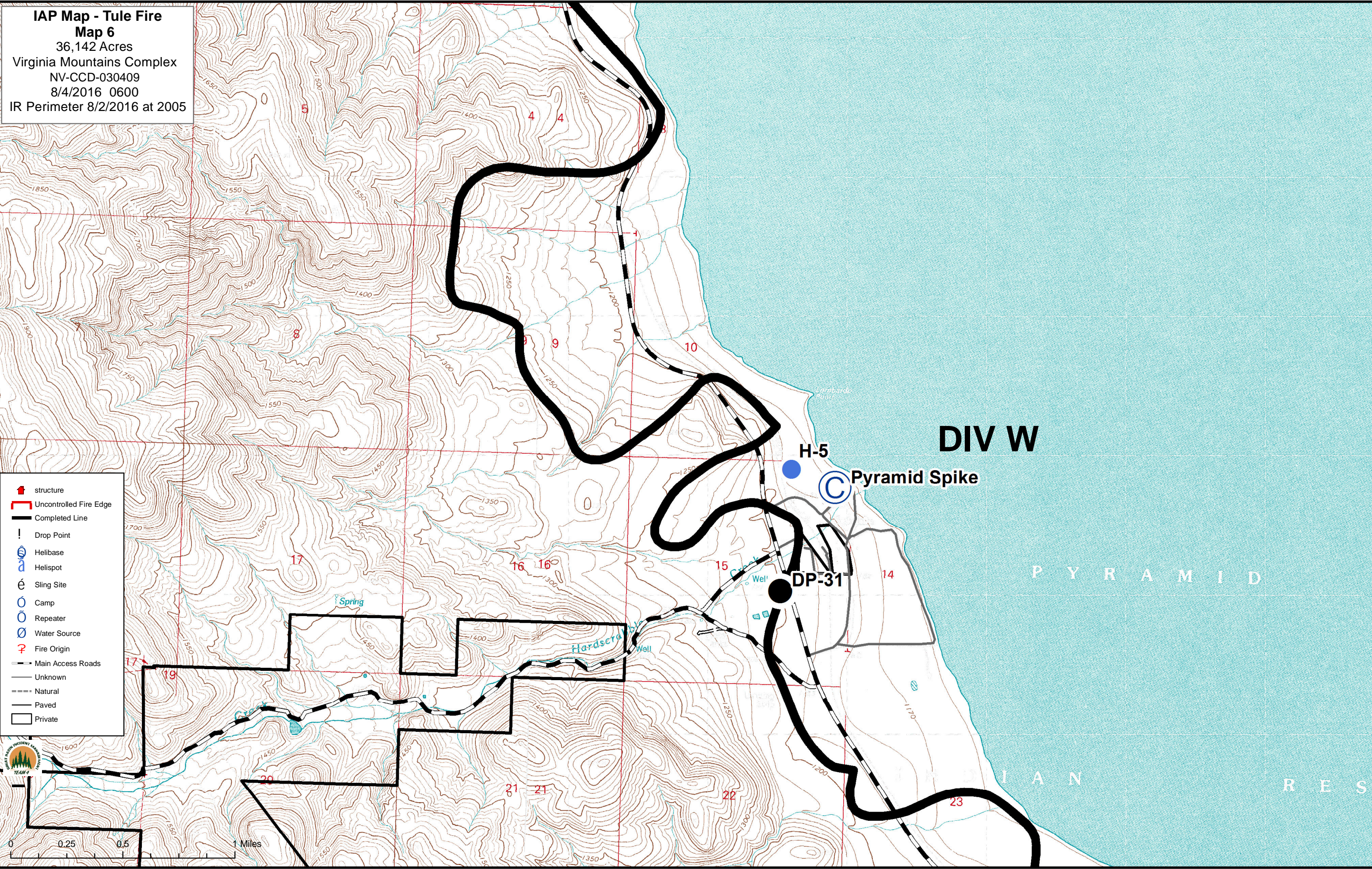


IAP Map - Tule Fire
Map 6
 36,142 Acres
 Virginia Mountains Complex
 NV-CCD-030409
 8/4/2016 0600
 IR Perimeter 8/2/2016 at 2005

-  structure
-  Uncontrolled Fire Edge
-  Completed Line
-  Drop Point
-  Helibase
-  Helispot
-  Sling Site
-  Camp
-  Repeater
-  Water Source
-  Fire Origin
-  Main Access Roads
-  Unknown
-  Natural
-  Paved
-  Private










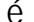








0 0.25 0.5 1 Miles




IAP Map - Tule Fire
Map 7
 36,142 Acres
 Virginia Mountains Complex
 NV-CCD-030409
 8/4/2016 0600
 IR Perimeter 8/2/2016 at 2005

DIV W

DIV V

-  structure
-  Uncontrolled Fire Edge
-  Completed Line
-  Drop Point
-  Helibase
-  Helispot
-  Sling Site
-  Camp
-  Repeater
-  Water Source
-  Fire Origin
-  Main Access Roads
-  Unknown
-  Natural
-  Paved
-  Private



NEVADA DEPARTMENT OF FORESTRY
 VIRGINIA MOUNTAINS COMPLEX
 TEAM #

