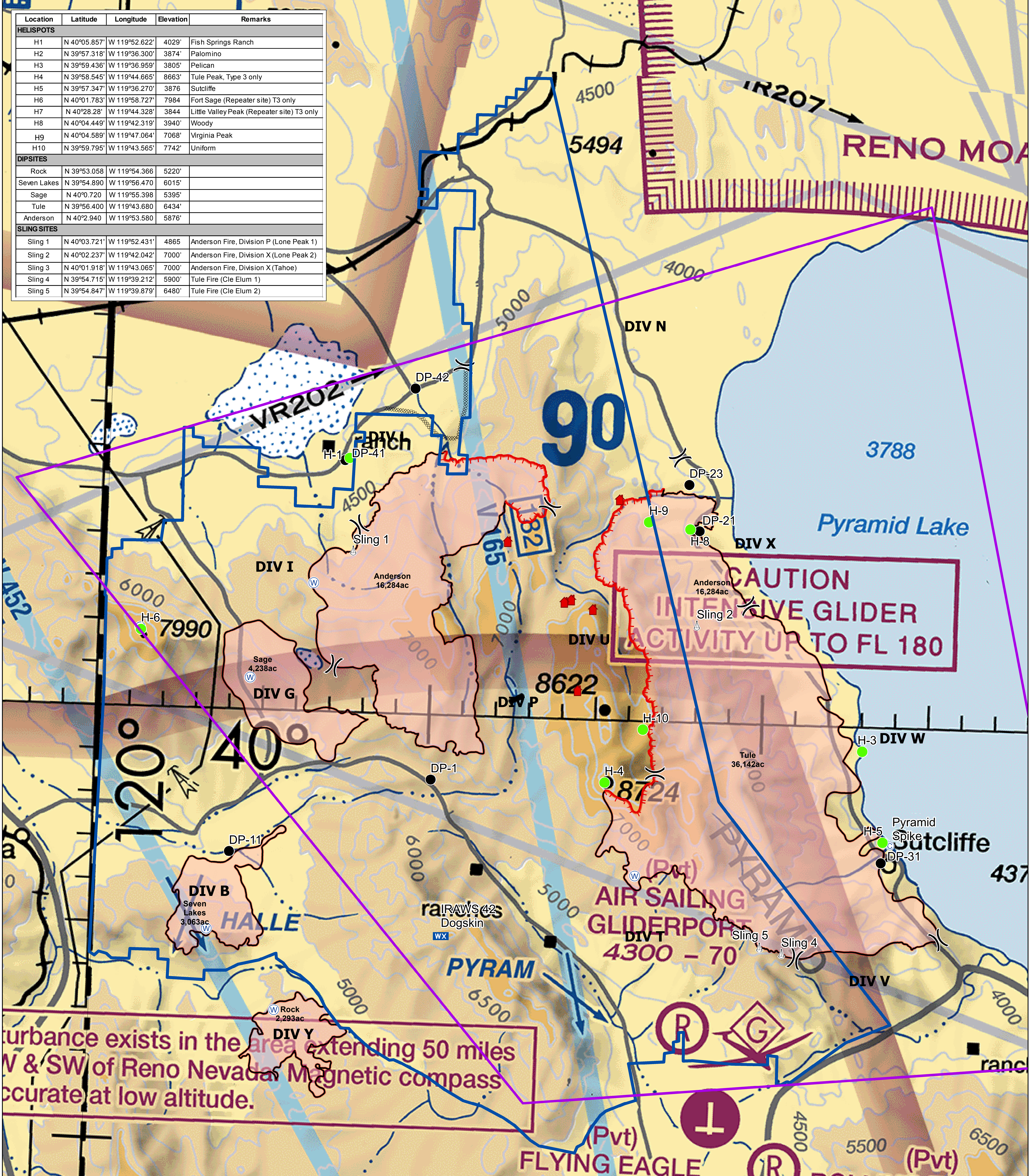


Location	Latitude	Longitude	Elevation	Remarks
HELISPOTS				
H1	N 40°05.857'	W 119°52.622'	4029'	Fish Springs Ranch
H2	N 39°57.318'	W 119°36.300'	3874'	Palomino
H3	N 39°59.436'	W 119°36.959'	3805'	Pelican
H4	N 39°58.545'	W 119°44.665'	8663'	Tule Peak, Type 3 only
H5	N 39°57.347'	W 119°36.270'	3876'	Sutcliffe
H6	N 40°01.783'	W 119°58.727'	7984'	Fort Sage (Repeater site) T3 only
H7	N 40°28.28'	W 119°44.328'	3844'	Little Valley Peak (Repeater site) T3 only
H8	N 40°04.449'	W 119°42.319'	3940'	Woody
H9	N 40°04.589'	W 119°47.064'	7068'	Virginia Peak
H10	N 39°59.795'	W 119°43.565'	7742'	Uniform
DIPSITES				
Rock	N 39°53.058'	W 119°54.366'	5220'	
Seven Lakes	N 39°54.890'	W 119°56.470'	6015'	
Sage	N 40°0.720'	W 119°55.398'	5395'	
Tule	N 39°56.400'	W 119°43.680'	6434'	
Anderson	N 40°2.940'	W 119°53.580'	5876'	
SLING SITES				
Sling 1	N 40°03.721'	W 119°52.431'	4865'	Anderson Fire, Division P (Lone Peak 1)
Sling 2	N 40°02.237'	W 119°42.042'	7000'	Anderson Fire, Division X (Lone Peak 2)
Sling 3	N 40°01.918'	W 119°43.065'	7000'	Anderson Fire, Division X (Tahoe)
Sling 4	N 39°54.715'	W 119°39.212'	5900'	Tule Fire (Cle Elum 1)
Sling 5	N 39°54.847'	W 119°39.879'	6480'	Tule Fire (Cle Elum 2)



Air Operations
 Virginia Mountains Complex
 62,020 Acres
 NV-CCD-030409
 8/5/2016 0600
 IR Perimeter 8/2/2016 at 0055



- Uncontrolled Fire Edge
- Helispot
- Mobile Weather Unit
- Completed Line
- Drop Point
- Repeater
- Completed Dozer Line
- Sling Site
- Water Source
- IA Response Area
- Camp
- Incident Command Post
- TFR
- Helibase
- Division
- Structures

