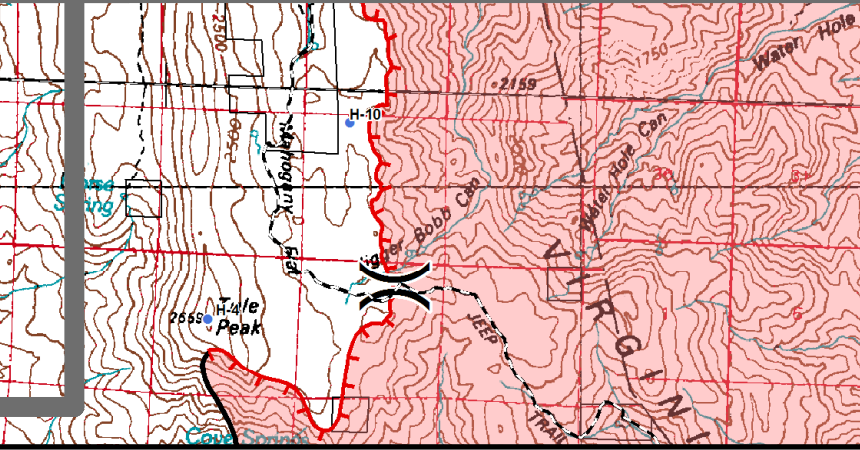
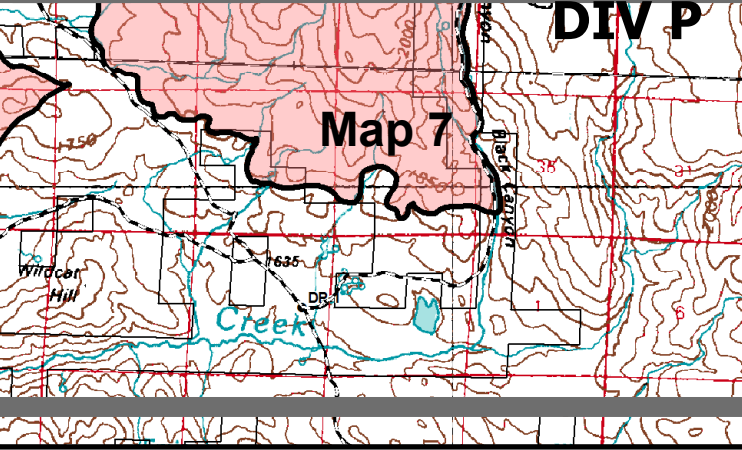
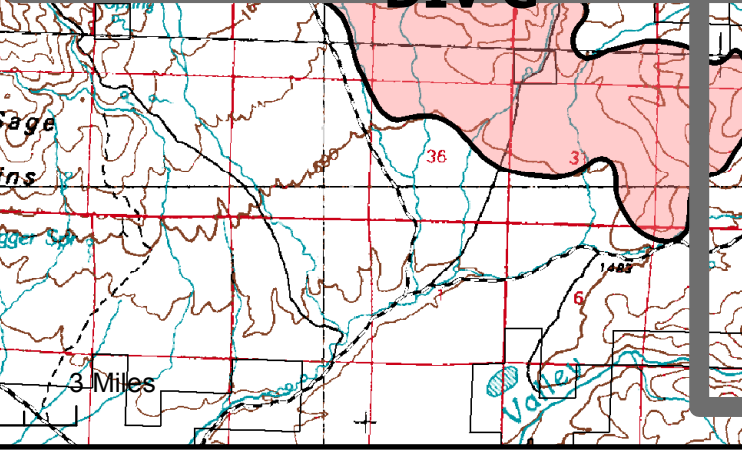
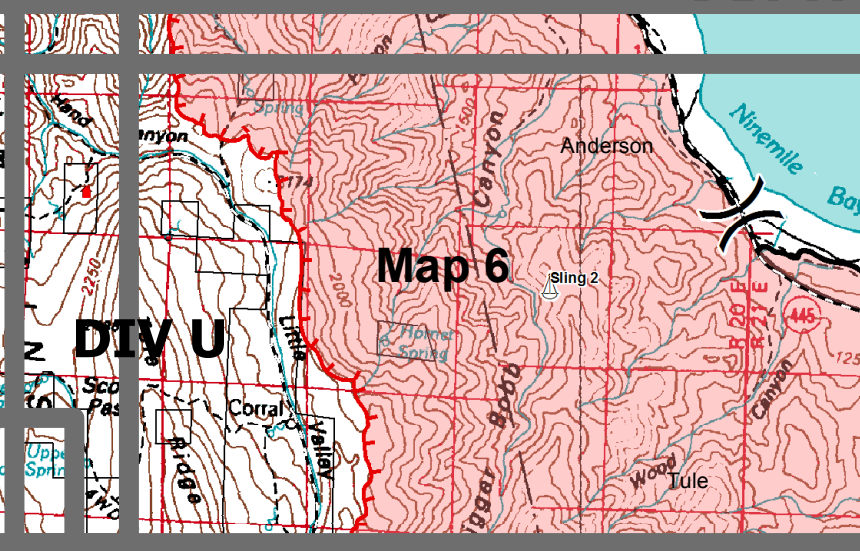
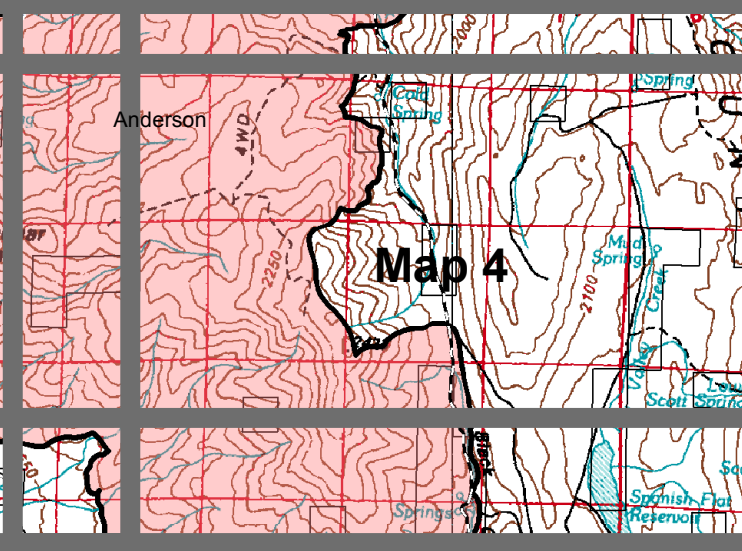
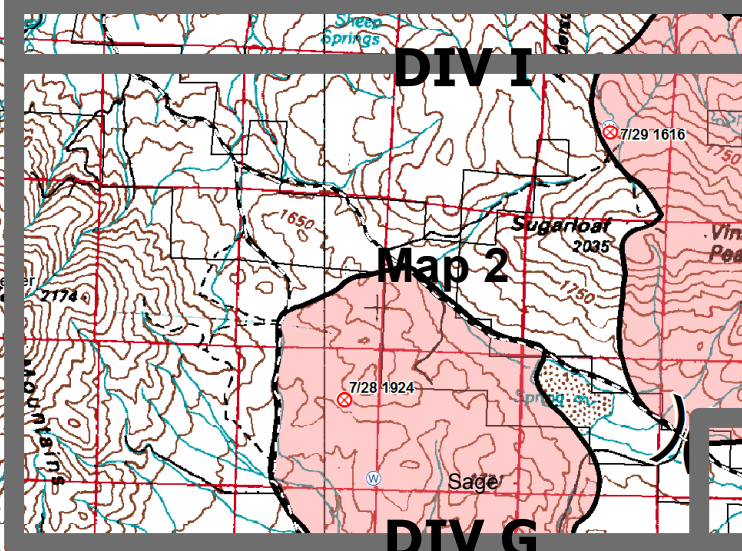
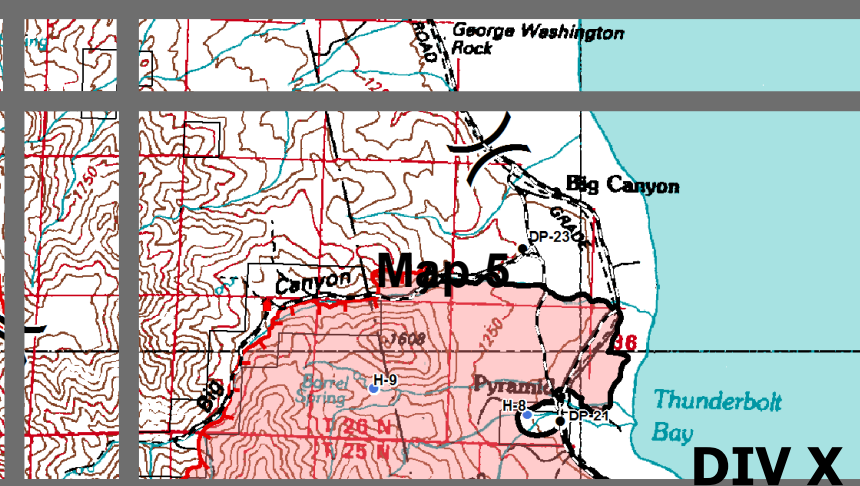
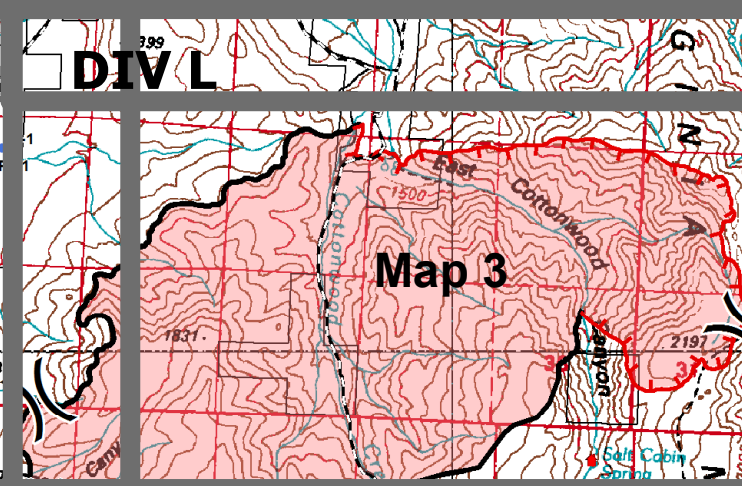
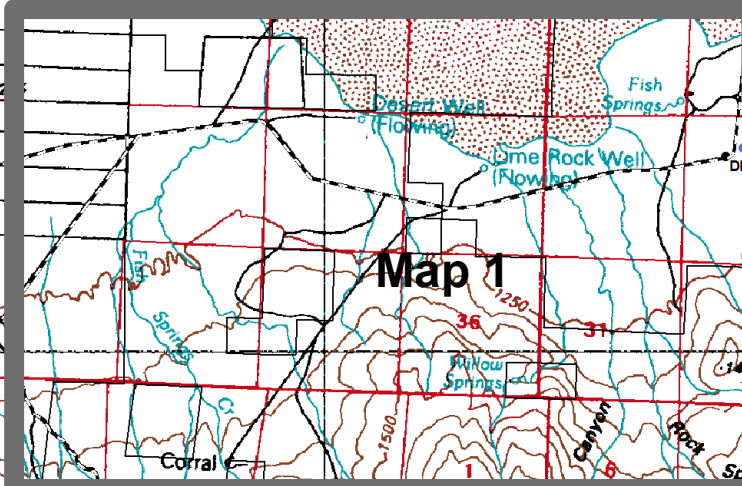
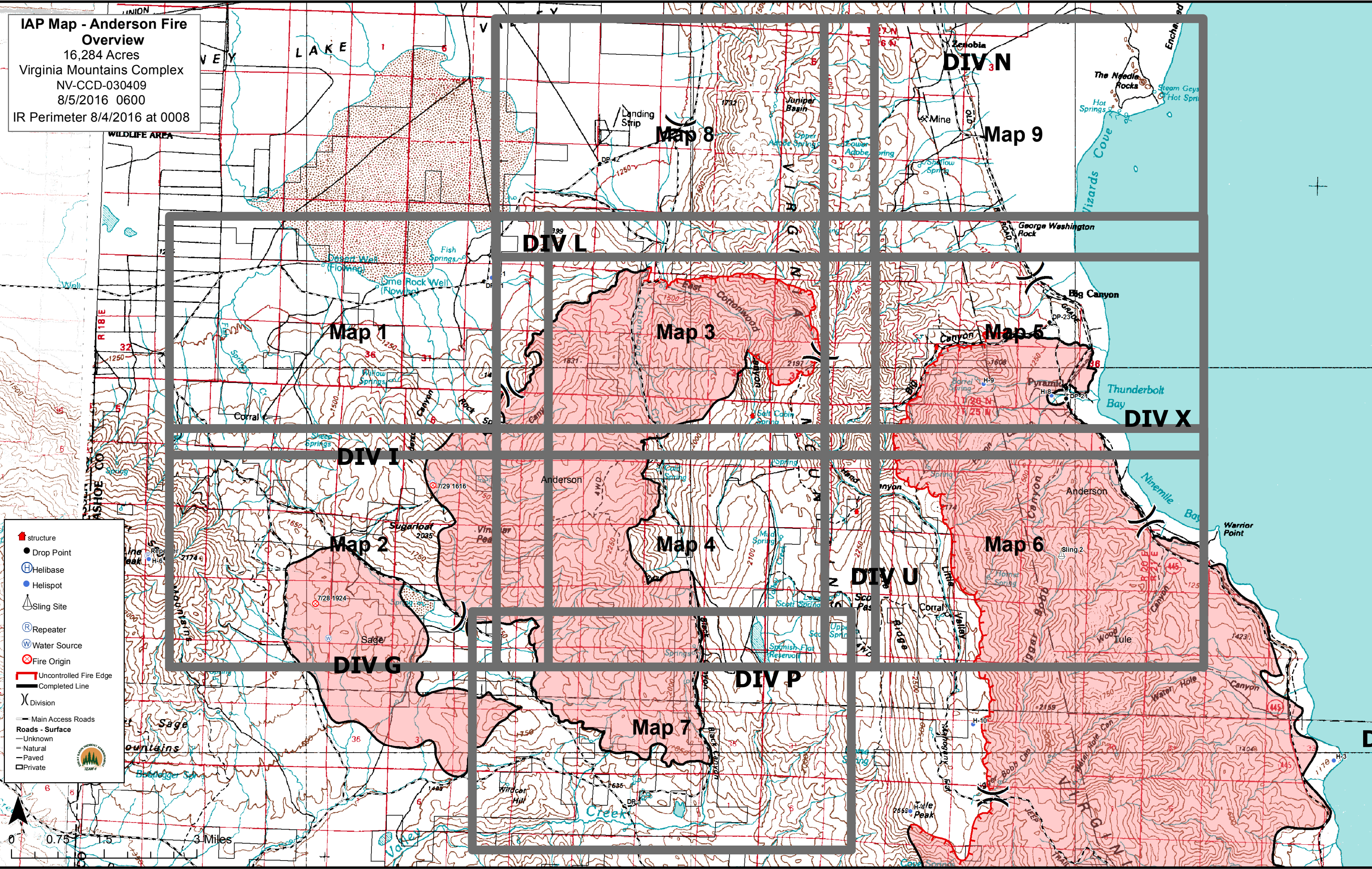
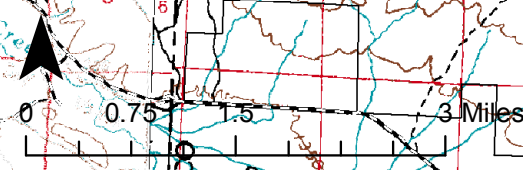


**IAP Map - Anderson Fire Overview**  
 16,284 Acres  
 Virginia Mountains Complex  
 NV-CCD-030409  
 8/5/2016 0600  
 IR Perimeter 8/4/2016 at 0008

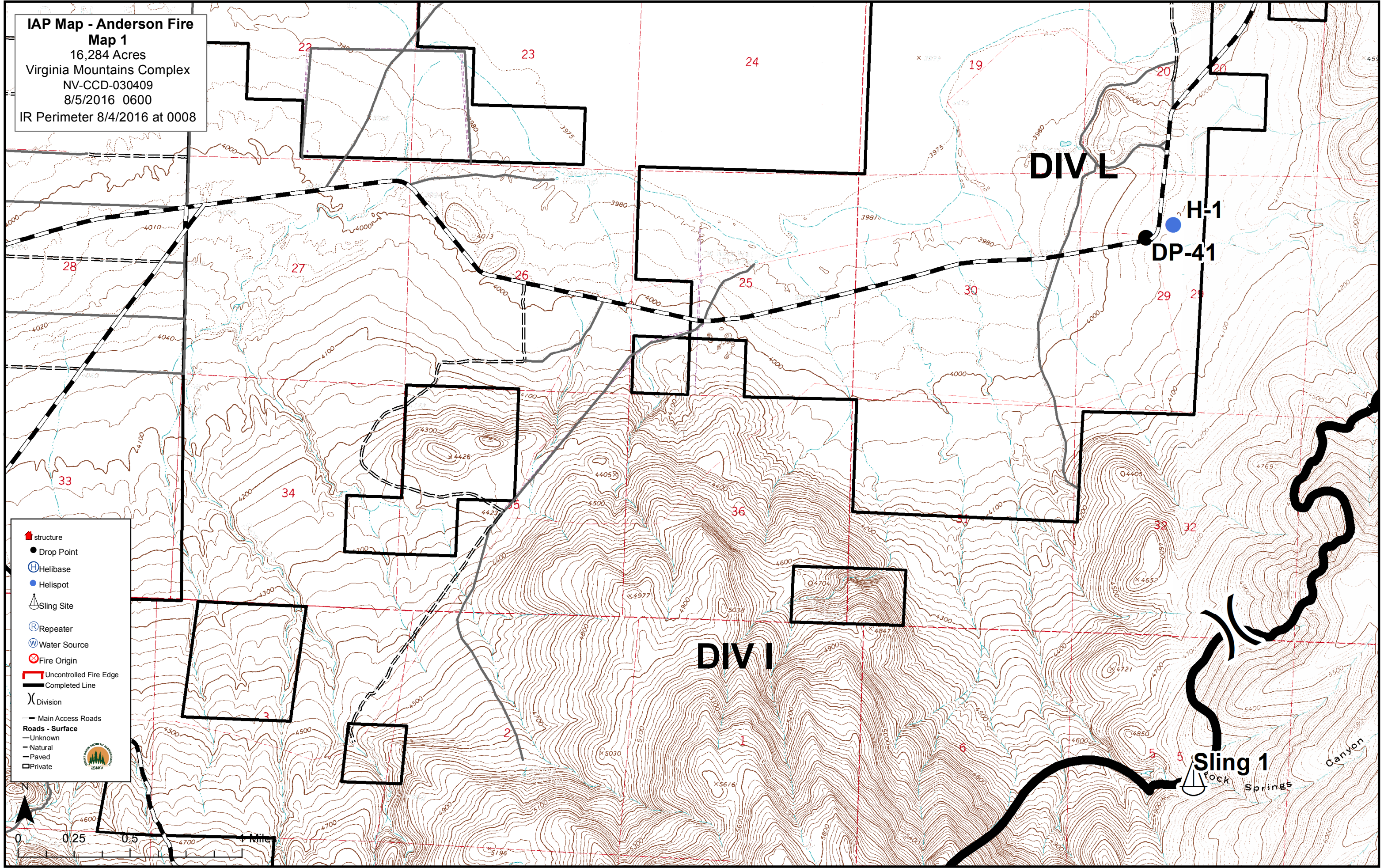
- structure
- Drop Point
- Helibase
- Helispot
- Sling Site
- Repeater
- Water Source
- Fire Origin
- Uncontrolled Fire Edge
- Completed Line
- Division
- Main Access Roads
- Roads - Surface**
- Unknown
- Natural
- Paved
- Private



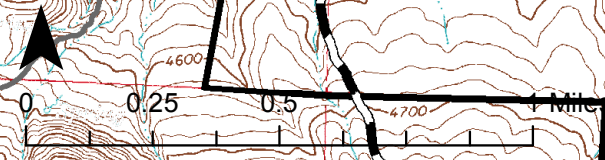


**IAP Map - Anderson Fire  
Map 1**

16,284 Acres  
Virginia Mountains Complex  
NV-CCD-030409  
8/5/2016 0600  
IR Perimeter 8/4/2016 at 0008

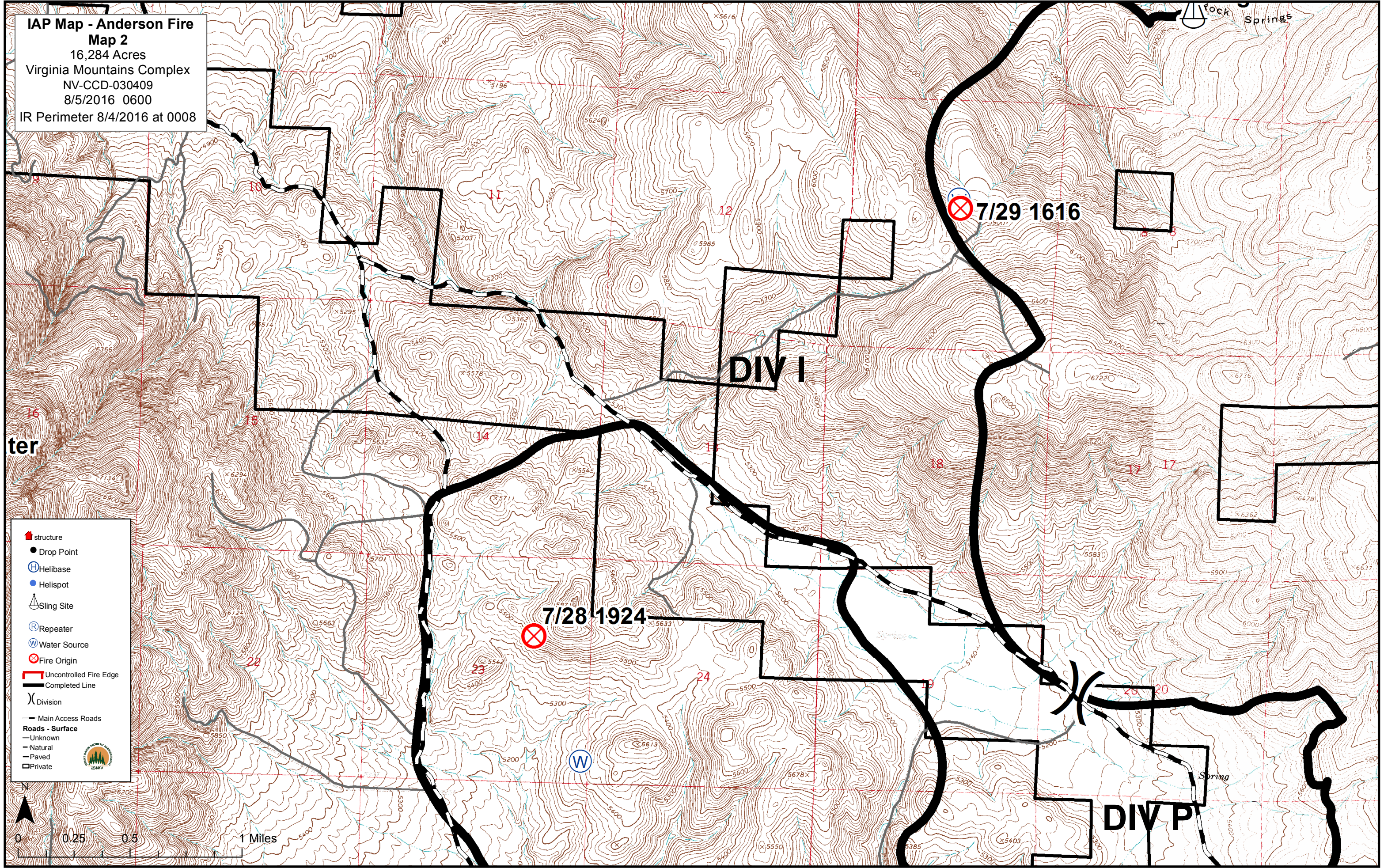


- structure
- Drop Point
- Helibase
- Helispot
- Sling Site
- Repeater
- Water Source
- Fire Origin
- Uncontrolled Fire Edge
- Completed Line
- Division
- Main Access Roads
- Roads - Surface
  - Unknown
  - Natural
  - Paved
  - Private





**IAP Map - Anderson Fire**  
**Map 2**  
16,284 Acres  
Virginia Mountains Complex  
NV-CCD-030409  
8/5/2016 0600  
IR Perimeter 8/4/2016 at 0008



ter

DIV I

DIV P

Rock Springs

Spring













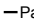



7/29 1616

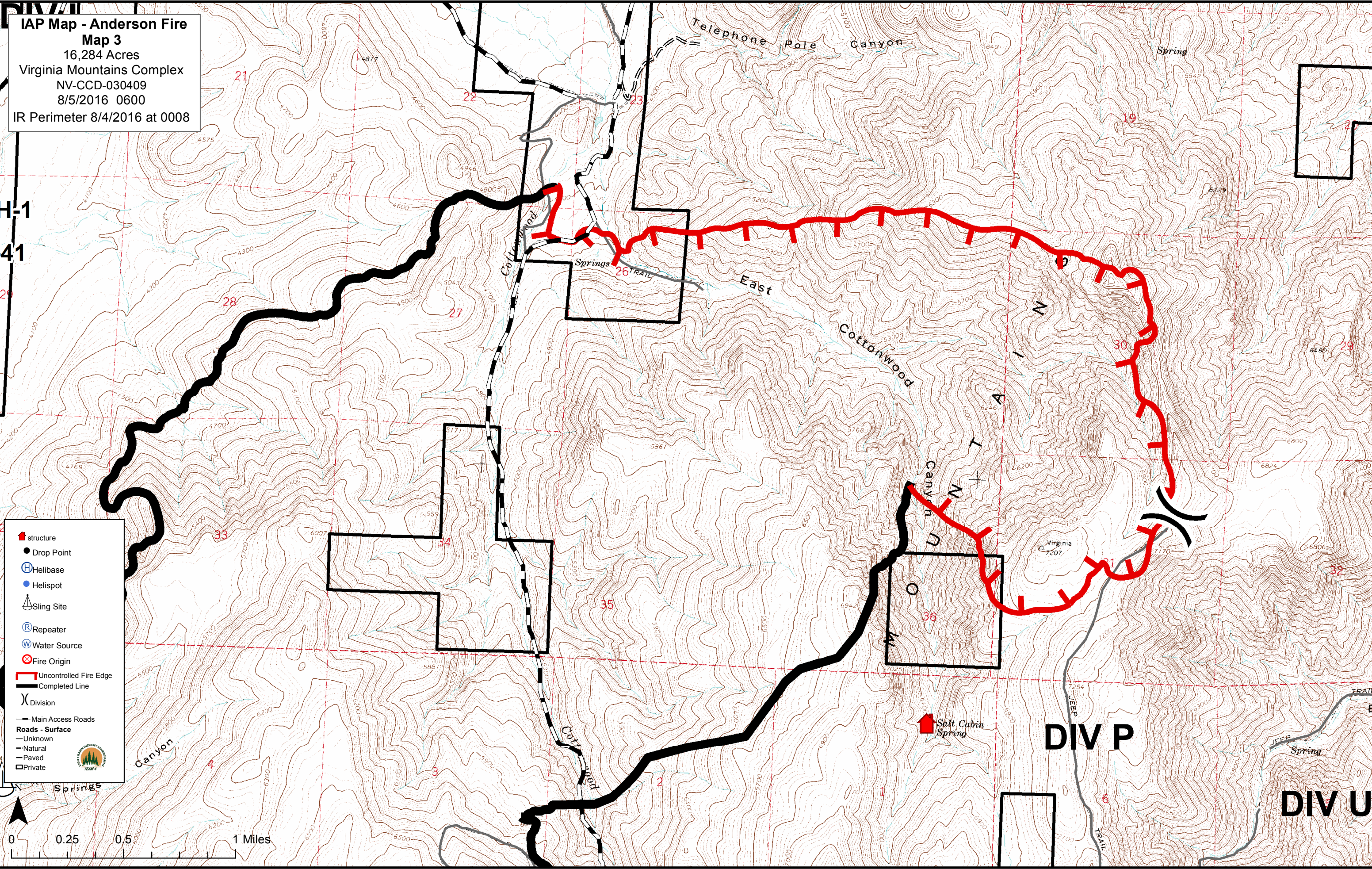
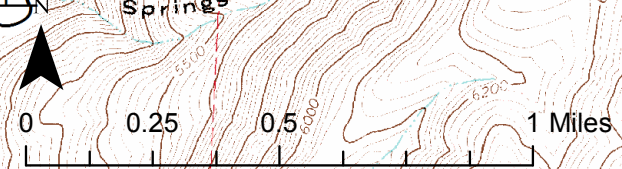
7/28 1924



**IAP Map - Anderson Fire**  
**Map 3**  
 16,284 Acres  
 Virginia Mountains Complex  
 NV-CCD-030409  
 8/5/2016 0600  
 IR Perimeter 8/4/2016 at 0008

H-1  
41

-  structure
-  Drop Point
-  Helibase
-  Helispot
-  Sling Site
-  Repeater
-  Water Source
-  Fire Origin
-  Uncontrolled Fire Edge
-  Completed Line
-  Division
-  Main Access Roads
- Roads - Surface**
-  Unknown
-  Natural
-  Paved
-  Private



**DIV P**

**DIV U**

Salt Cabin Spring

Springs

East

Cottonwood

Canyon

Telephone Pole Canyon

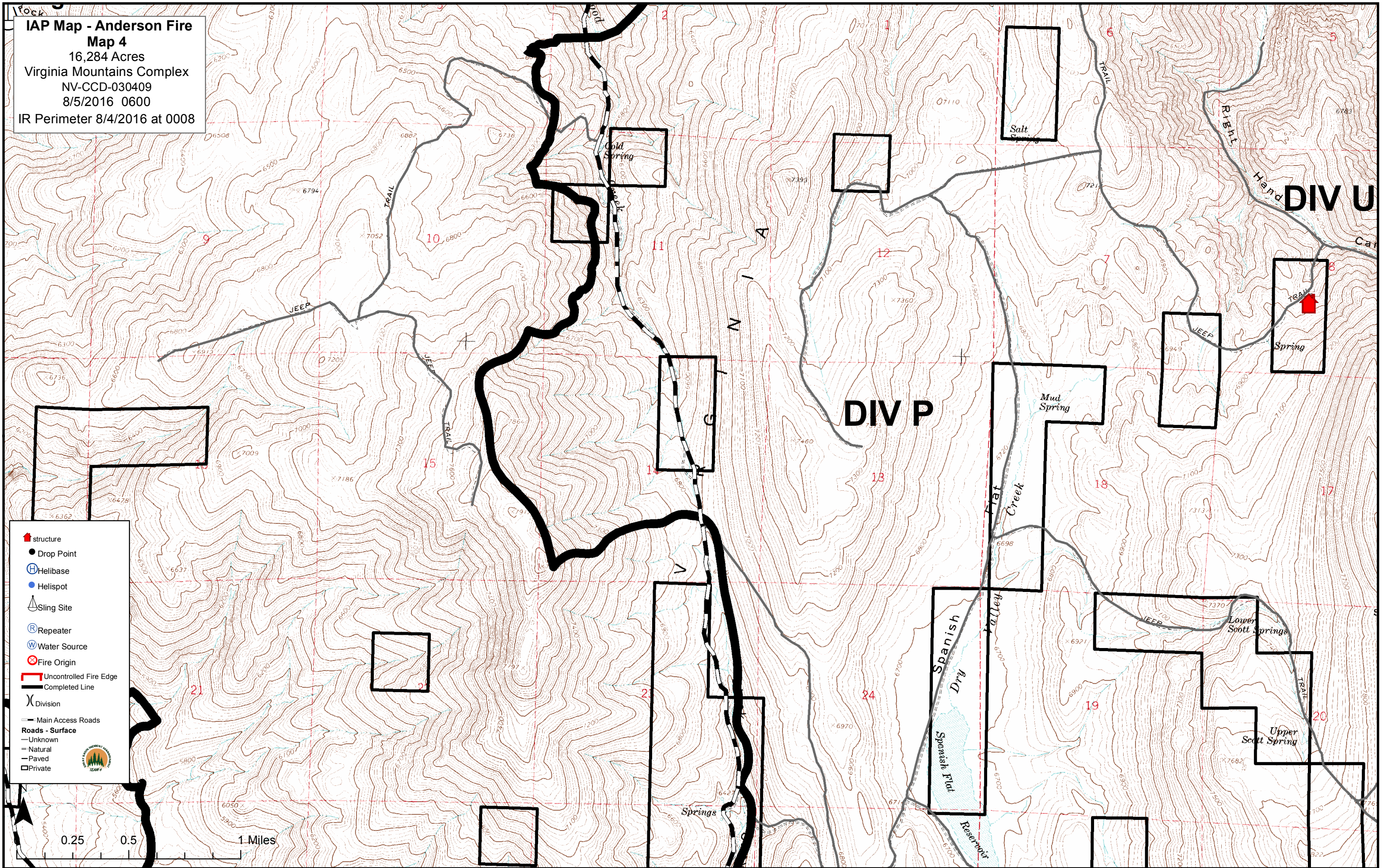
Spring

Spring

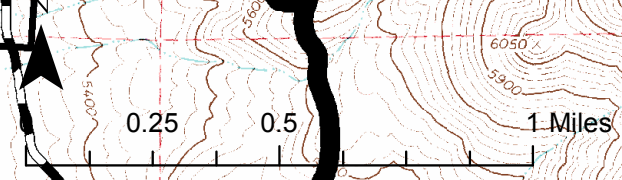
Springs



**IAP Map - Anderson Fire**  
**Map 4**  
 16,284 Acres  
 Virginia Mountains Complex  
 NV-CCD-030409  
 8/5/2016 0600  
 IR Perimeter 8/4/2016 at 0008

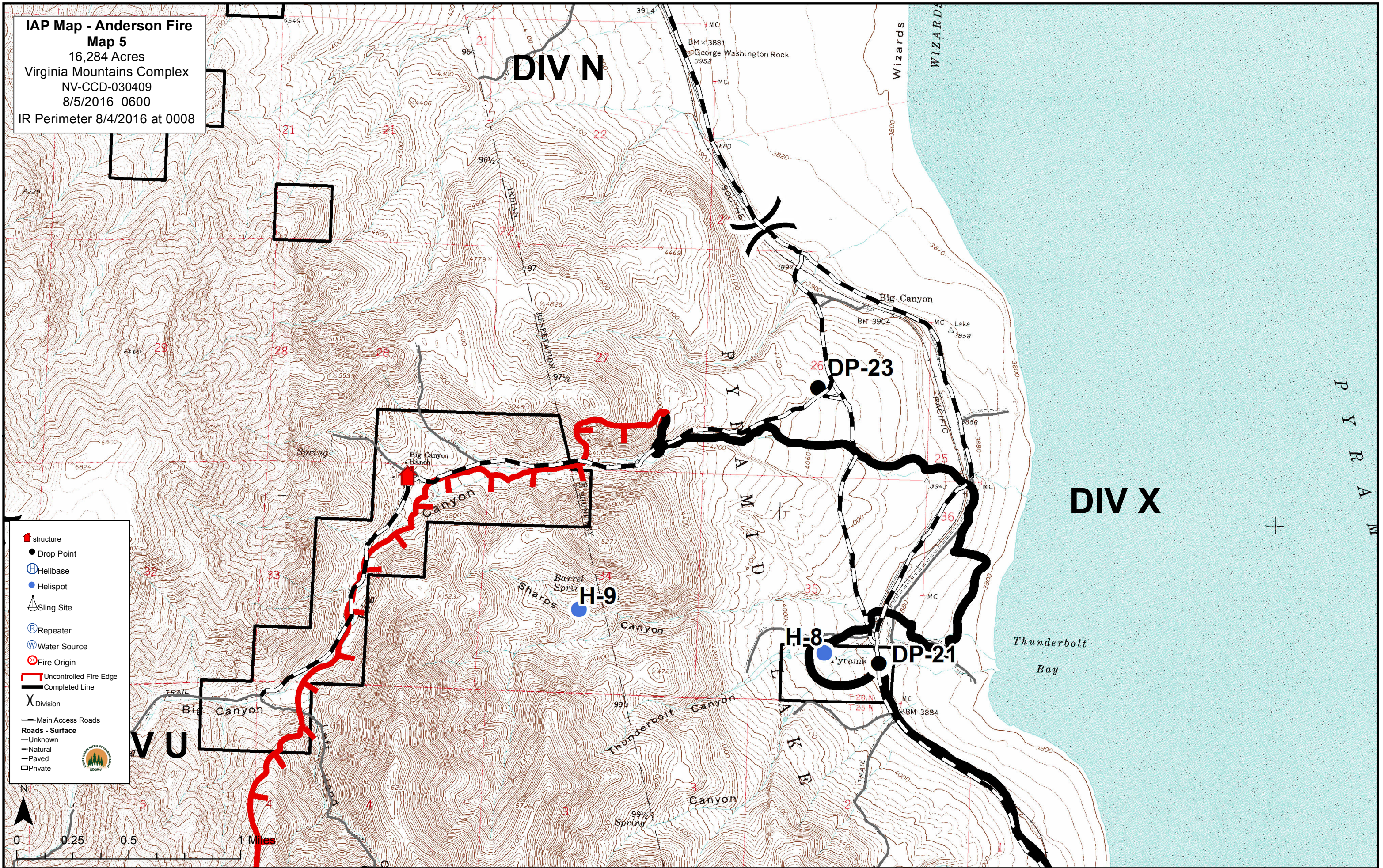


- structure
- Drop Point
- Helibase
- Helispot
- Sling Site
- Repeater
- Water Source
- Fire Origin
- Uncontrolled Fire Edge
- Completed Line
- Division
- Main Access Roads
- Roads - Surface**
- Unknown
- Natural
- Paved
- Private

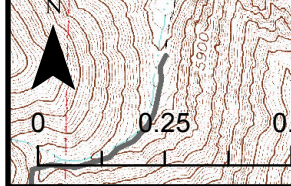




**IAP Map - Anderson Fire**  
**Map 5**  
 16,284 Acres  
 Virginia Mountains Complex  
 NV-CCD-030409  
 8/5/2016 0600  
 IR Perimeter 8/4/2016 at 0008



- structure
- Drop Point
- Helibase
- Helispot
- Sling Site
- Repeater
- Water Source
- Fire Origin
- Uncontrolled Fire Edge
- Completed Line
- Division
- Main Access Roads
- Roads - Surface**
- Unknown
- Natural
- Paved
- Private





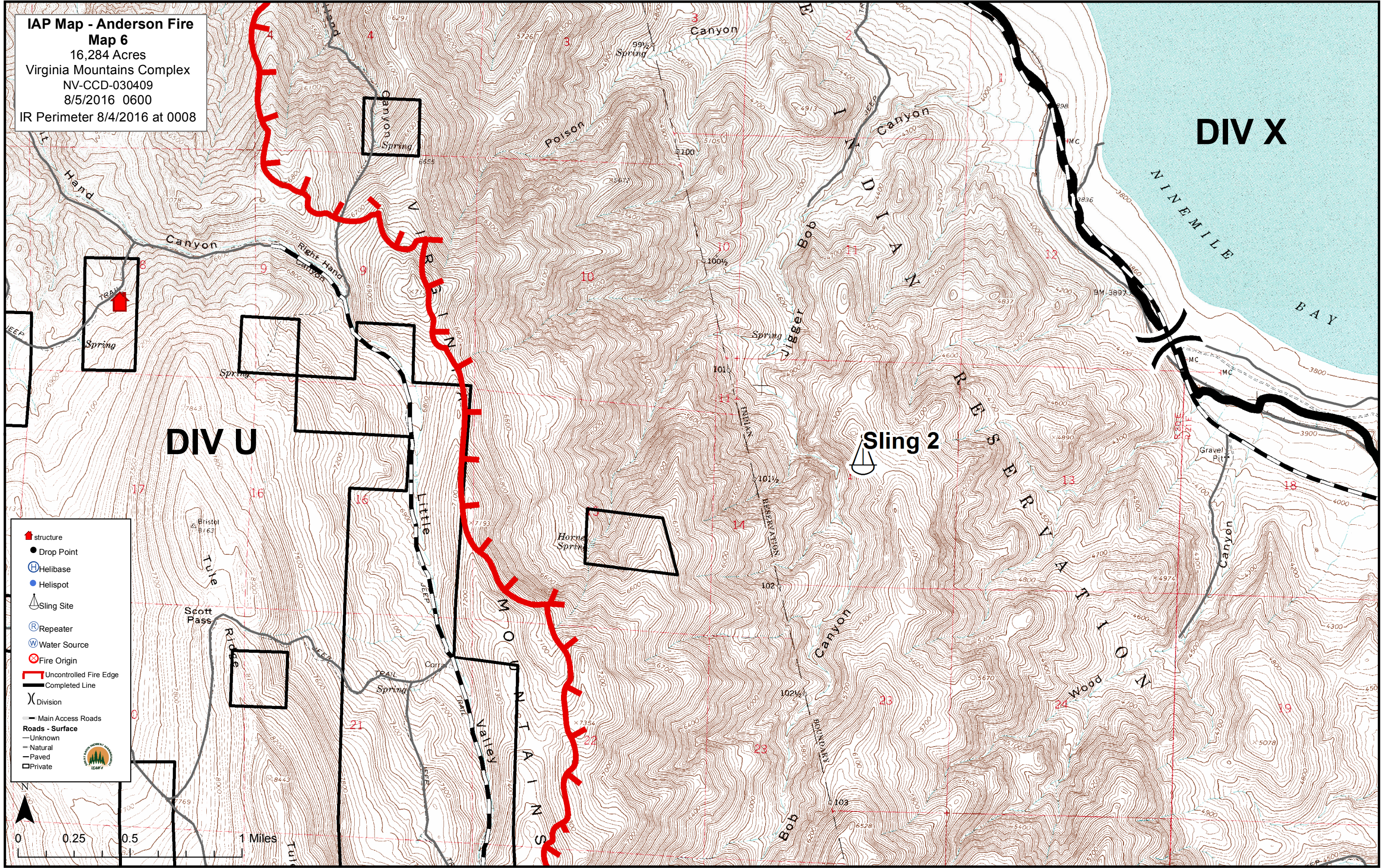
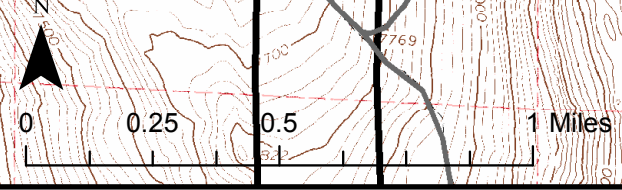
**IAP Map - Anderson Fire**  
**Map 6**  
16,284 Acres  
Virginia Mountains Complex  
NV-CCD-030409  
8/5/2016 0600  
IR Perimeter 8/4/2016 at 0008

**DIV X**

**DIV U**

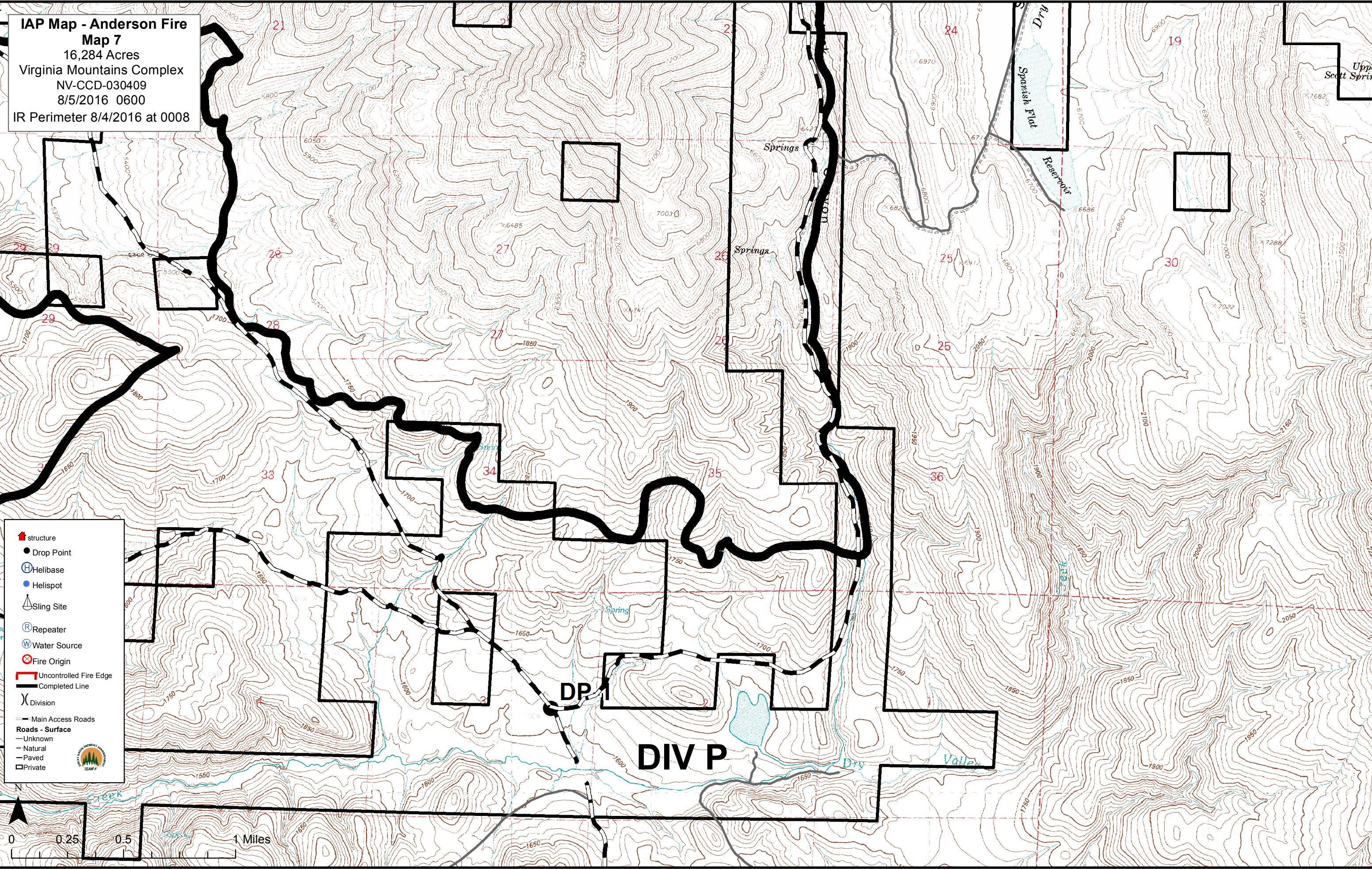
**Sling 2**

- structure
- Drop Point
- Helibase
- Helispot
- Sling Site
- Repeater
- Water Source
- Fire Origin
- Uncontrolled Fire Edge
- Completed Line
- Division
- Main Access Roads
- Roads - Surface
  - Unknown
  - Natural
  - Paved
  - Private

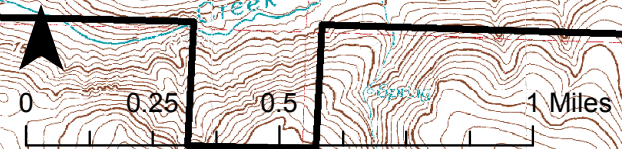




**IAP Map - Anderson Fire**  
**Map 7**  
 16,284 Acres  
 Virginia Mountains Complex  
 NV-CCD-030409  
 8/5/2016 0600  
 IR Perimeter 8/4/2016 at 0008



- structure
- Drop Point
- ⊕ Helibase
- Helispot
- ⚙ Sling Site
- Ⓡ Repeater
- Ⓜ Water Source
- ⊗ Fire Origin
- Uncontrolled Fire Edge
- Completed Line
- ⌘ Division
- Main Access Roads
- Roads - Surface**
- Unknown
- Natural
- Paved
- Private



**DIV P**

**DP**

Dry  
Spanish Flat  
Reservoir

Upper  
Scott Springs

Springs

Springs

Spring

Dry Valley



**IAP Map - Anderson Fire**  
**Map 8**  
 16,284 Acres  
 Virginia Mountains Complex  
 NV-CCD-030409  
 8/5/2016 0600  
 IR Perimeter 8/4/2016 at 0008

N  
E  
Y

V  
I  
R  
G  
I  
N  
I  
A  
M  
O  
U  
N  
T  
A  
I  
N  
S












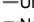
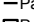



**DIV N**

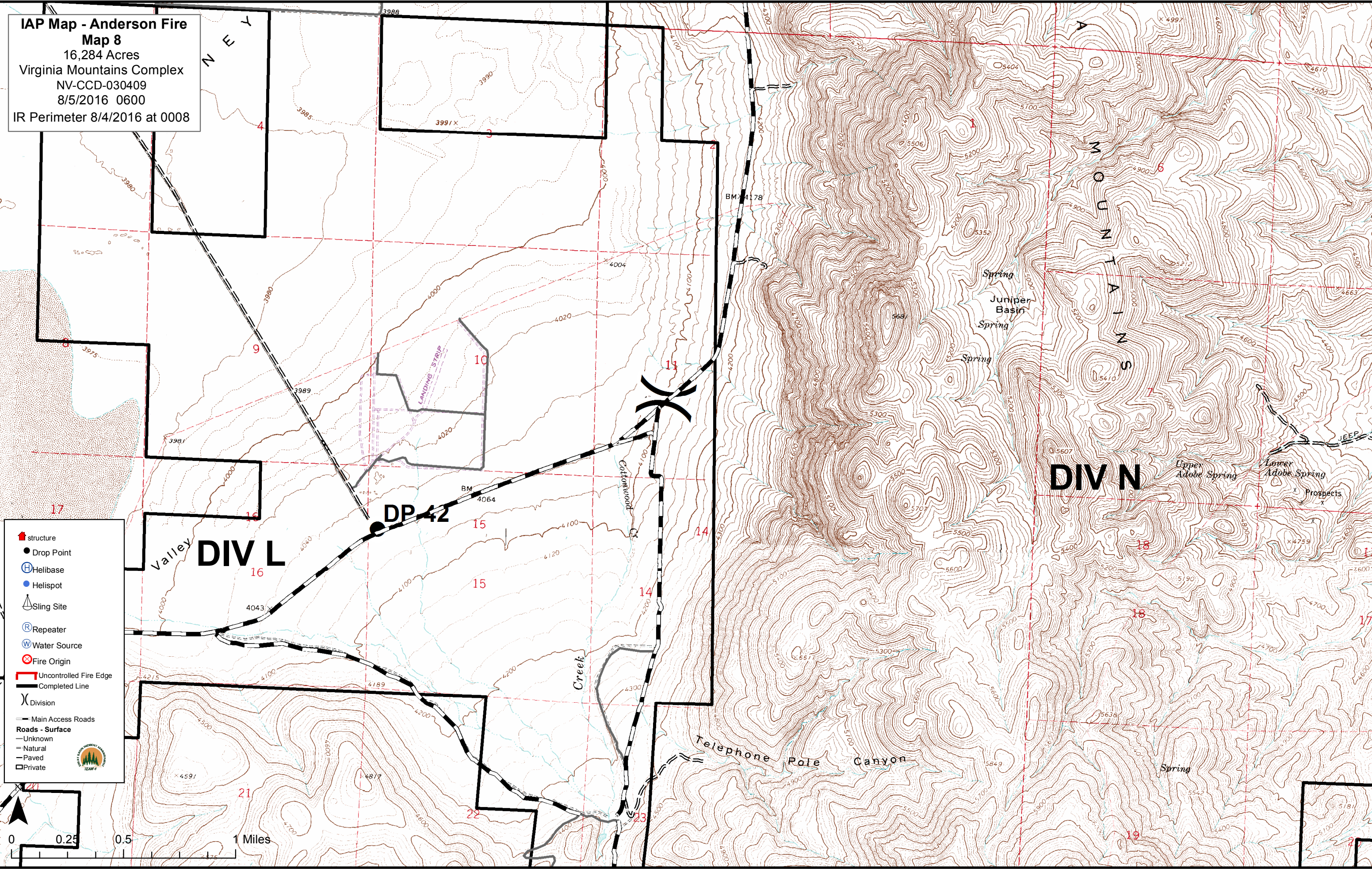
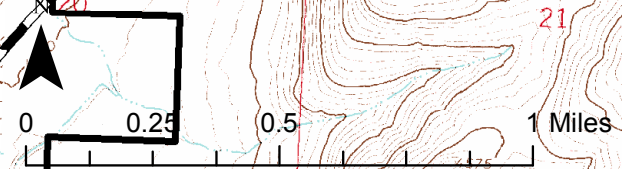
Valley **DIV L**

**DP 42**

Creek

Telephone Pole Canyon

-  structure
-  Drop Point
-  Helibase
-  Helispot
-  Sling Site
-  Repeater
-  Water Source
-  Fire Origin
-  Uncontrolled Fire Edge
-  Completed Line
-  Division
-  Main Access Roads
- Roads - Surface**
-  Unknown
-  Natural
-  Paved
-  Private





**IAP Map - Anderson Fire**  
**Map 9**  
 16,284 Acres  
 Virginia Mountains Complex  
 NV-CCD-030409  
 8/5/2016 0600  
 IR Perimeter 8/4/2016 at 0008

- structure
- Drop Point
- Helibase
- Helispot
- Sling Site
- Repeater
- Water Source
- Fire Origin
- Uncontrolled Fire Edge
- Completed Line
- Division
- Main Access Roads
- Roads - Surface**
- Unknown
- Natural
- Paved
- Private

