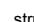

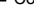


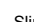
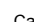

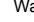
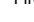



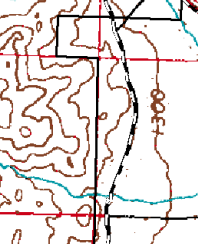
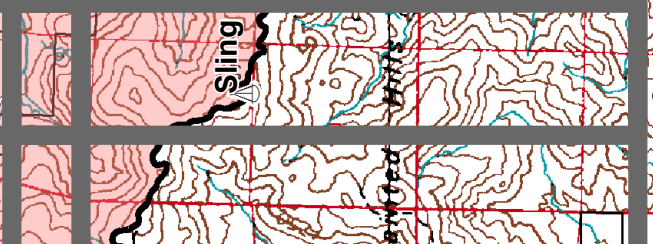
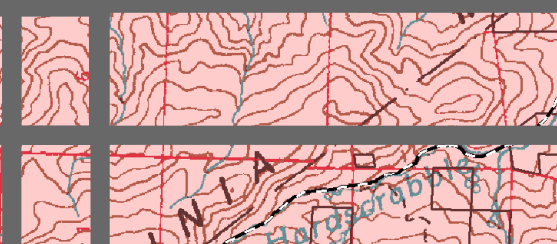
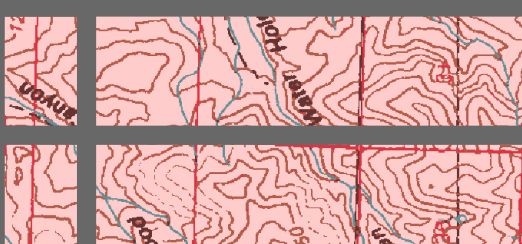
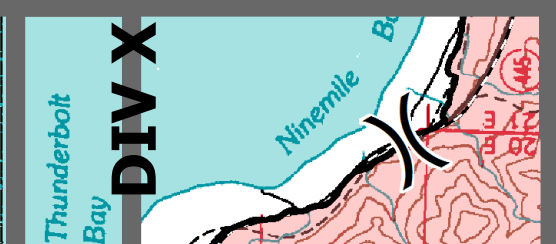
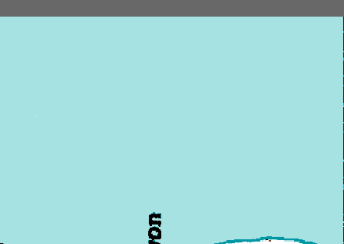
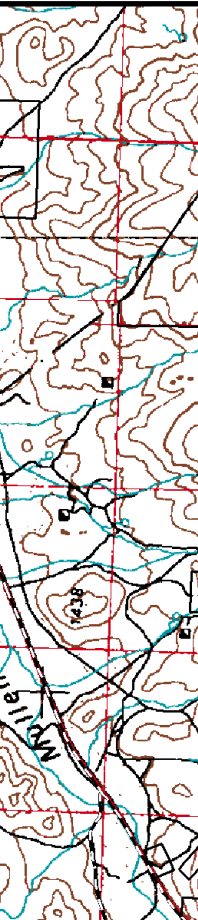
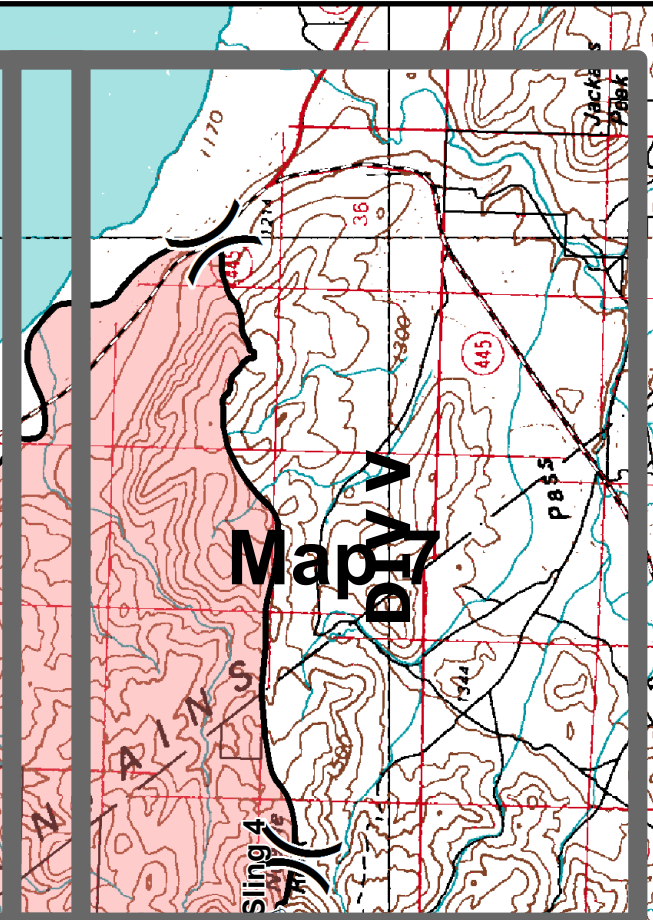
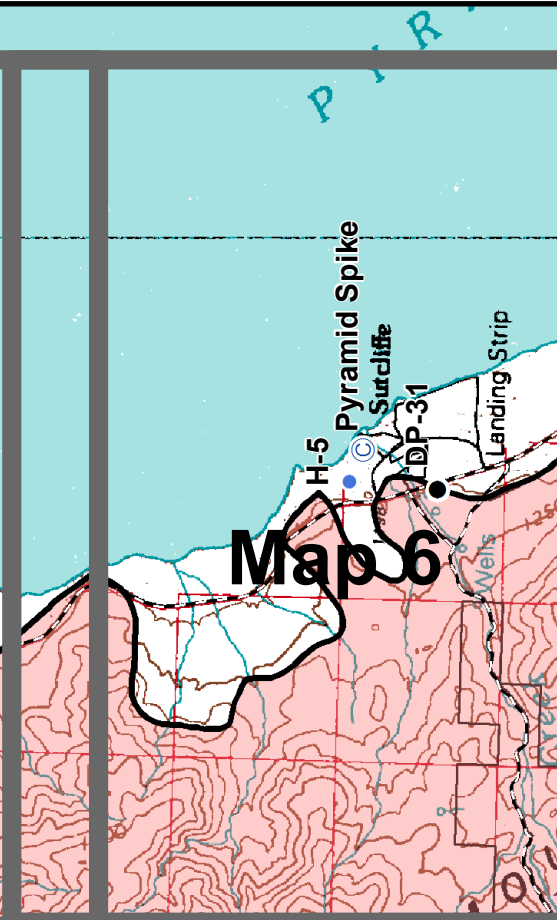
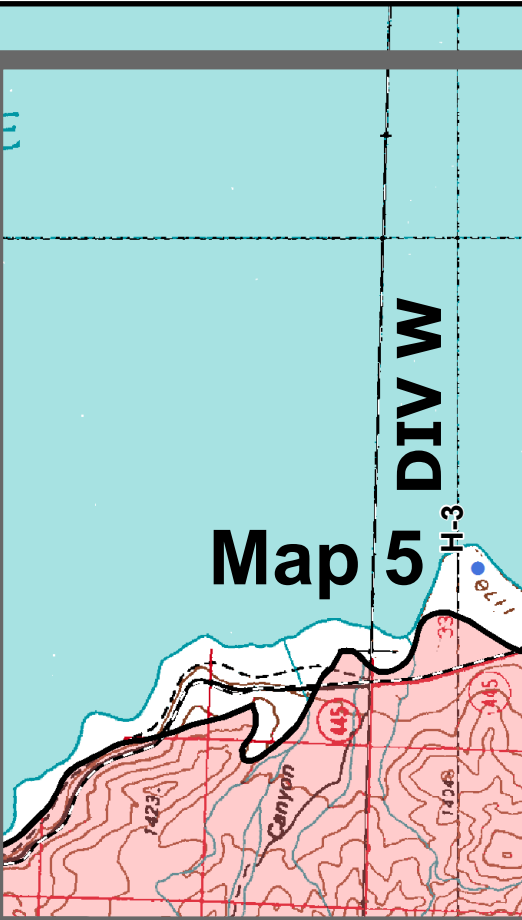
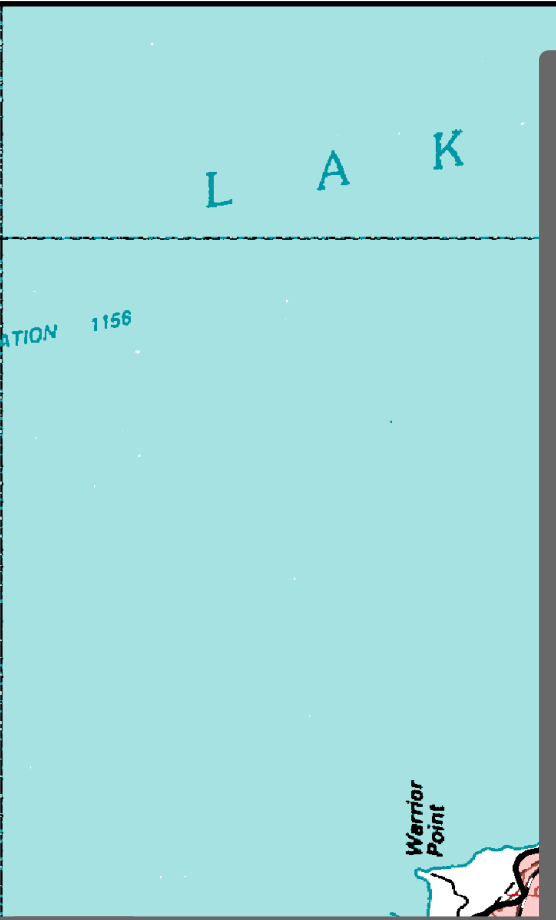
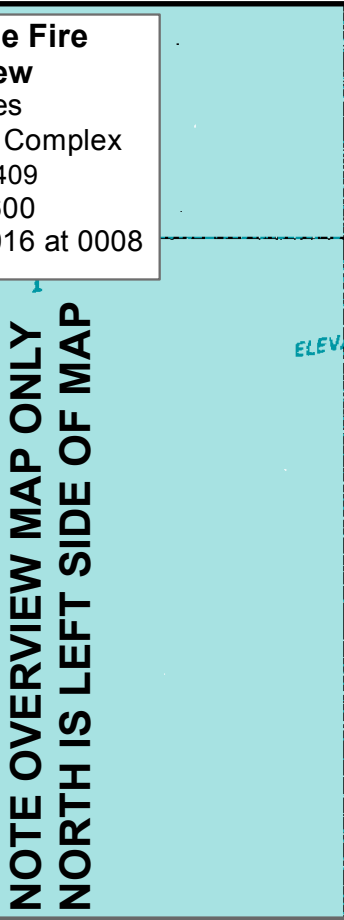
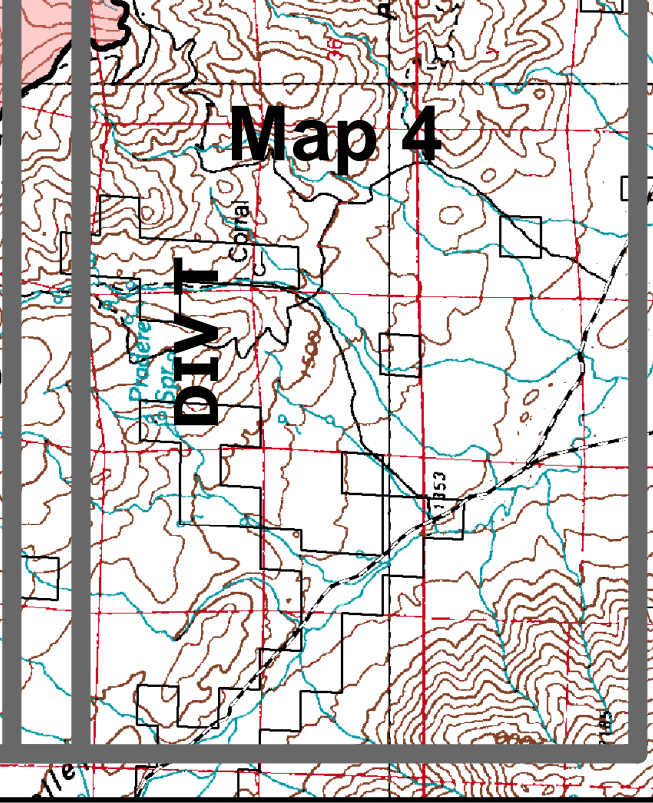
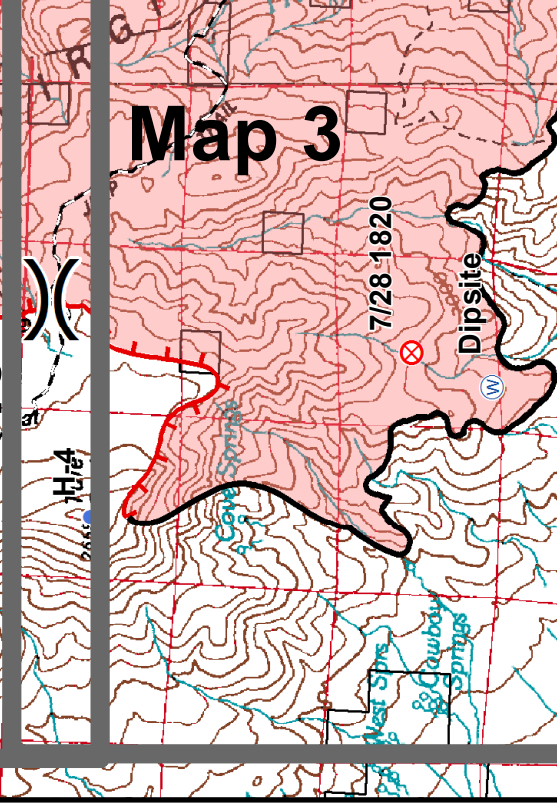
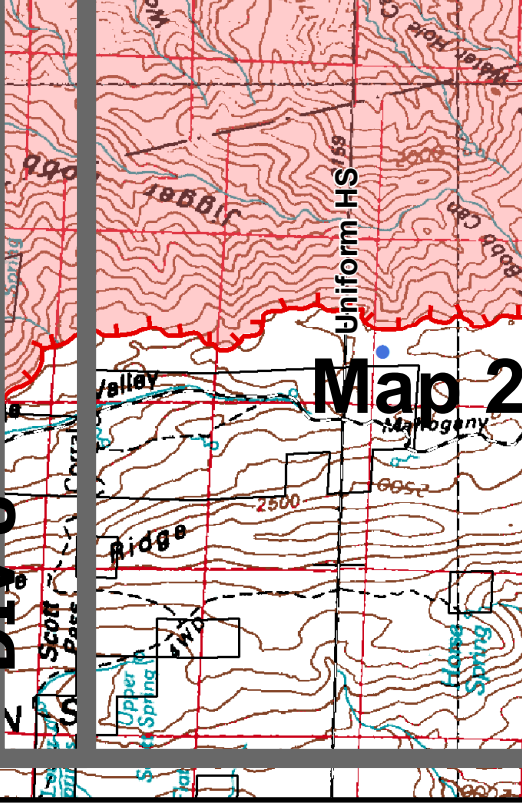
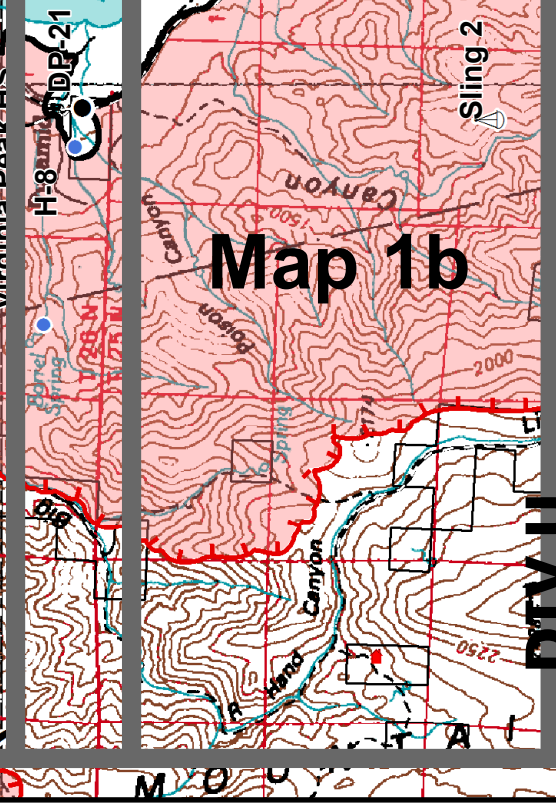
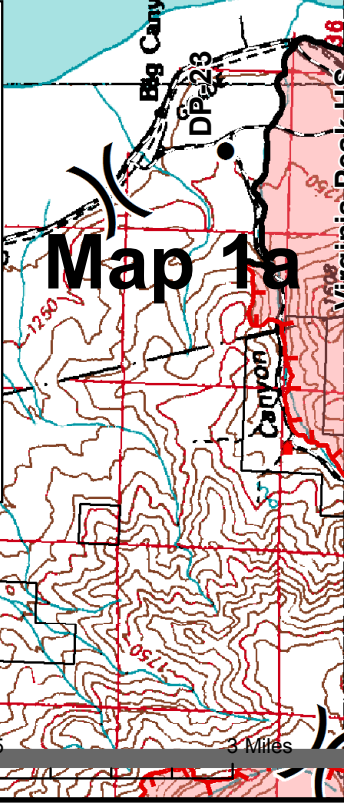
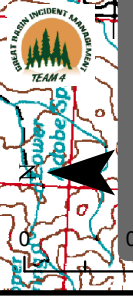


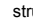

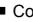

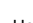

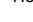
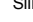
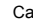





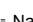

IAP Map - Tule Fire Overview
 36,142 Acres
 Virginia Mountains Complex
 NV-CCD-030409
 8/5/2016 0600
 IR Perimeter 8/4/2016 at 0008

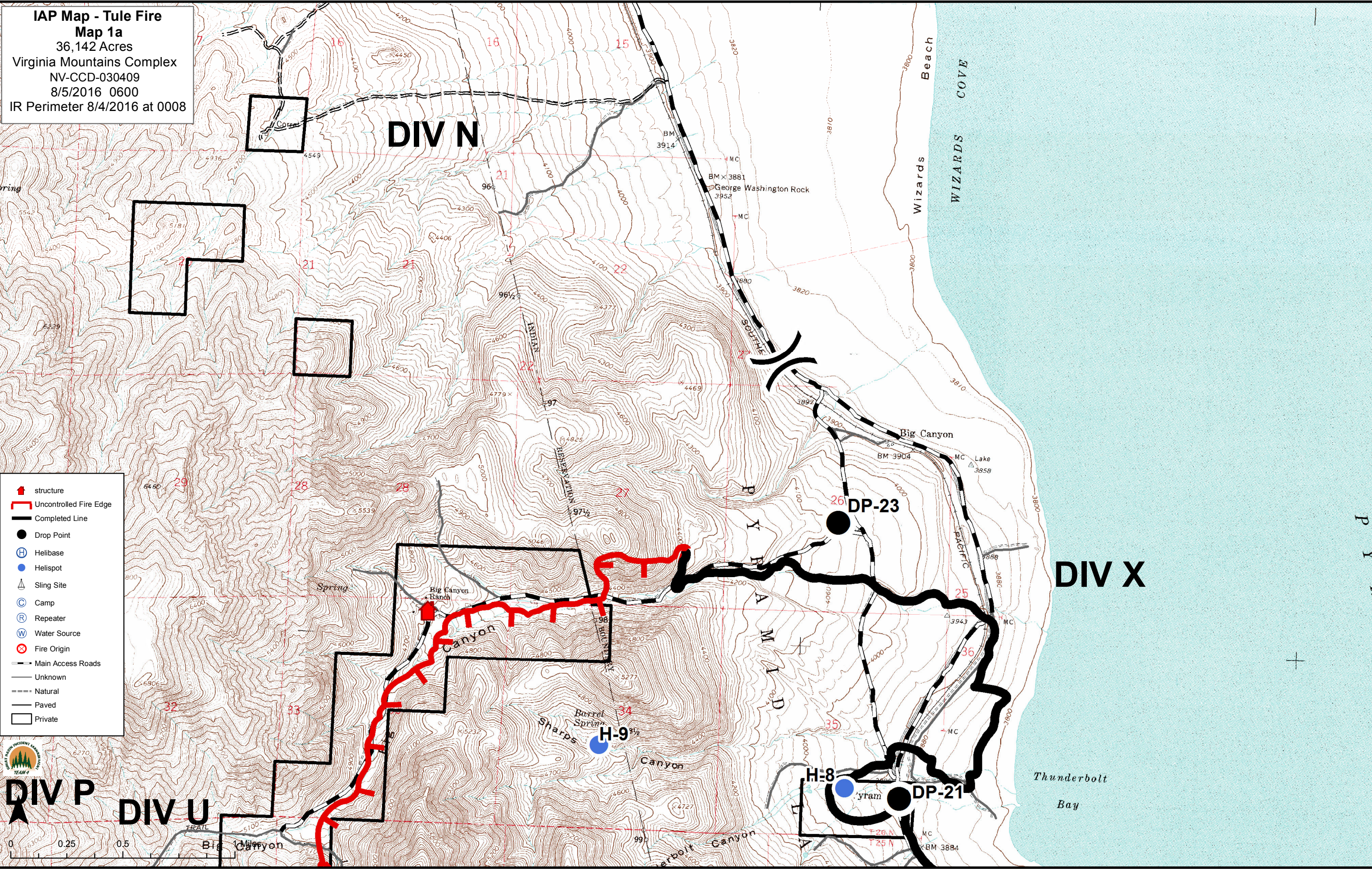
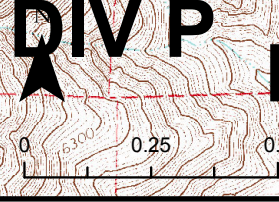
**NOTE OVERVIEW MAP ONLY
 NORTH IS LEFT SIDE OF MAP**

-  structure
-  Uncontrolled Fire Edge
-  Completed Line
-  Drop Point
-  Helibase
-  Helispot
-  Sling Site
-  Camp
-  Repeater
-  Water Source
-  Fire Origin
-  Main Access Roads
-  Private

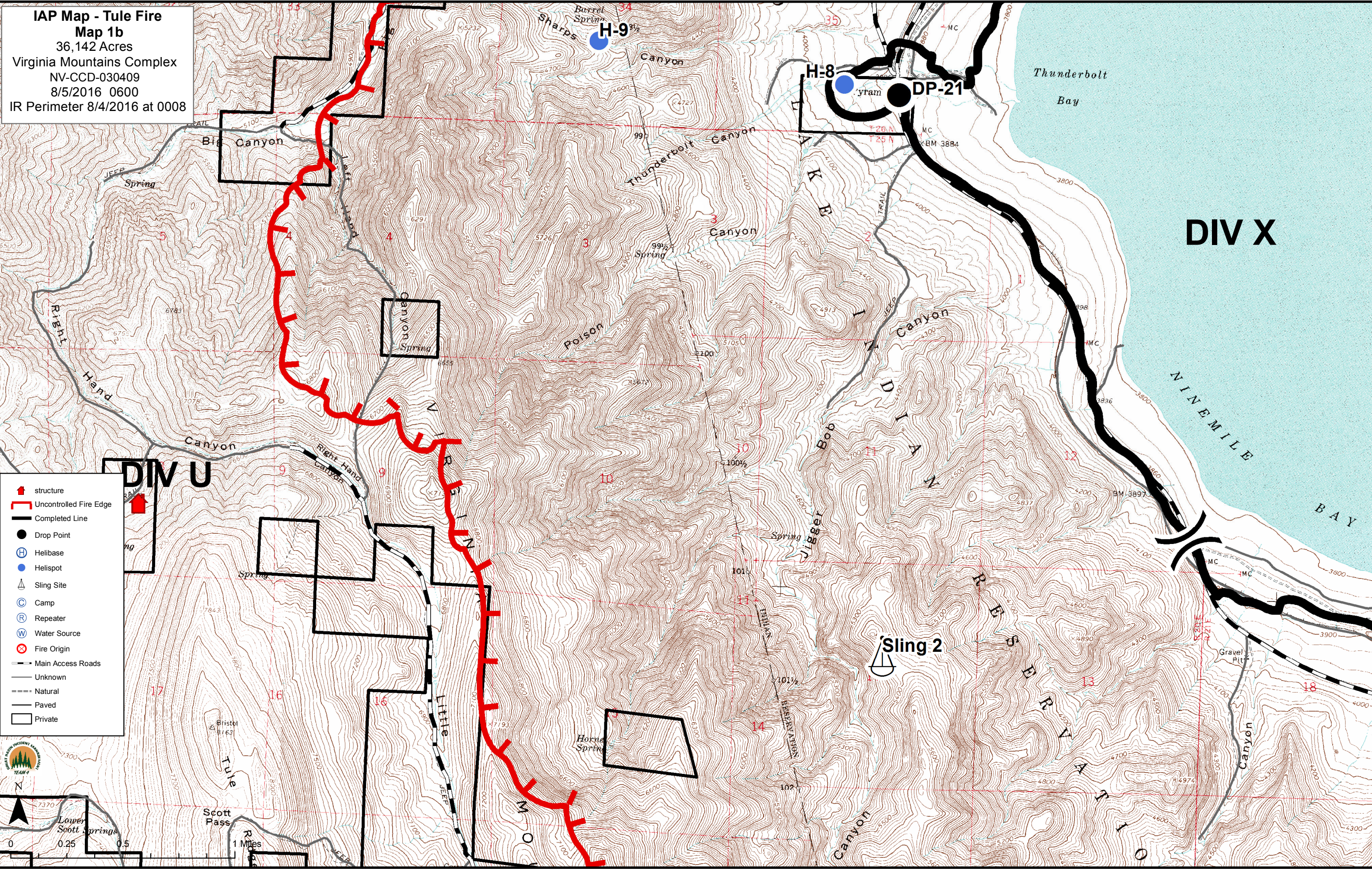


IAP Map - Tule Fire
Map 1a
 36,142 Acres
 Virginia Mountains Complex
 NV-CCD-030409
 8/5/2016 0600
 IR Perimeter 8/4/2016 at 0008

-  structure
-  Uncontrolled Fire Edge
-  Completed Line
-  Drop Point
-  Helibase
-  Helispot
-  Sling Site
-  Camp
-  Repeater
-  Water Source
-  Fire Origin
-  Main Access Roads
-  Unknown
-  Natural
-  Paved
-  Private



IAP Map - Tule Fire
Map 1b
 36,142 Acres
 Virginia Mountains Complex
 NV-CCD-030409
 8/5/2016 0600
 IR Perimeter 8/4/2016 at 0008



- structure
- Uncontrolled Fire Edge
- Completed Line
- Drop Point
- Helibase
- Helispot
- Sling Site
- Camp
- Repeater
- Water Source
- Fire Origin
- Main Access Roads
- Unknown
- Natural
- Paved
- Private

N

0 0.25 0.5 1 Miles

TEAM #

DIV X

DIV U

Sling 2

H-9

H-8

DP-21

NINEMILE BAY

Thunderbolt Bay

Big Canyon

Thunderbolt Canyon

Canyon

Canyon

Canyon

Canyon Spring

Poison

Spring

Spring

Spring

Spring

Little

Horne Spring

Scott Pass

Lower Scott Springs

Gravel Pit

Eristol

Spring

Spring

Spring

Spring

Spring

Spring

Spring

Spring

Spring

Spring

















Spring

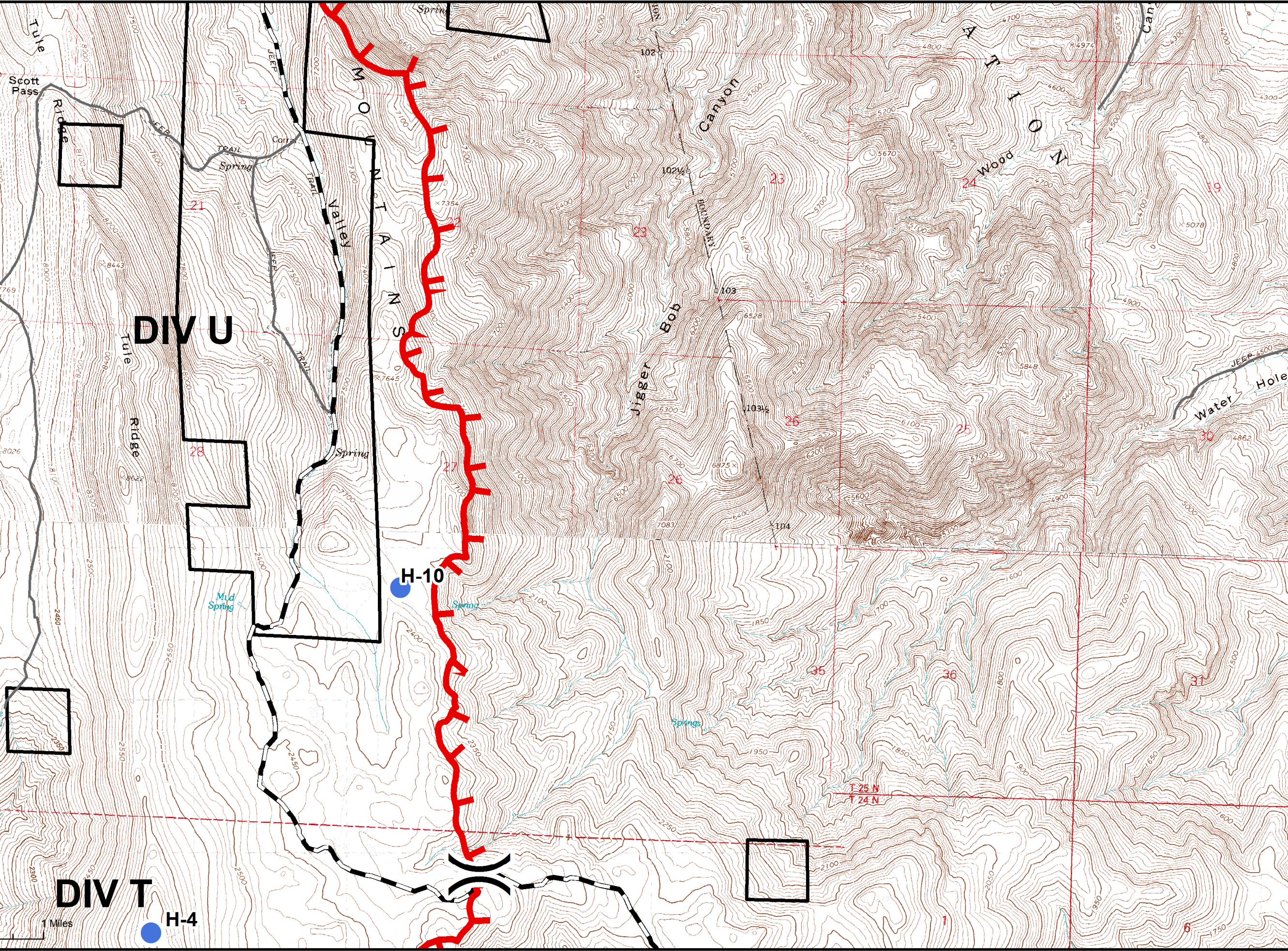
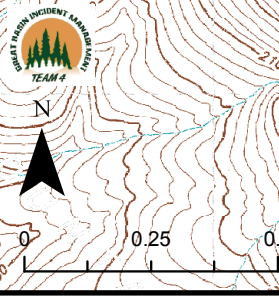
Spring

Spring

Spring

IAP Map - Tule Fire
Map 2
 36,142 Acres
 Virginia Mountains Complex
 NV-CCD-030409
 8/5/2016 0600
 IR Perimeter 8/4/2016 at 0008

-  structure
-  Uncontrolled Fire Edge
-  Completed Line
-  Drop Point
-  Helibase
-  Helispot
-  Sling Site
-  Camp
-  Repeater
-  Water Source
-  Fire Origin
-  Main Access Roads
-  Unknown
-  Natural
-  Paved
-  Private



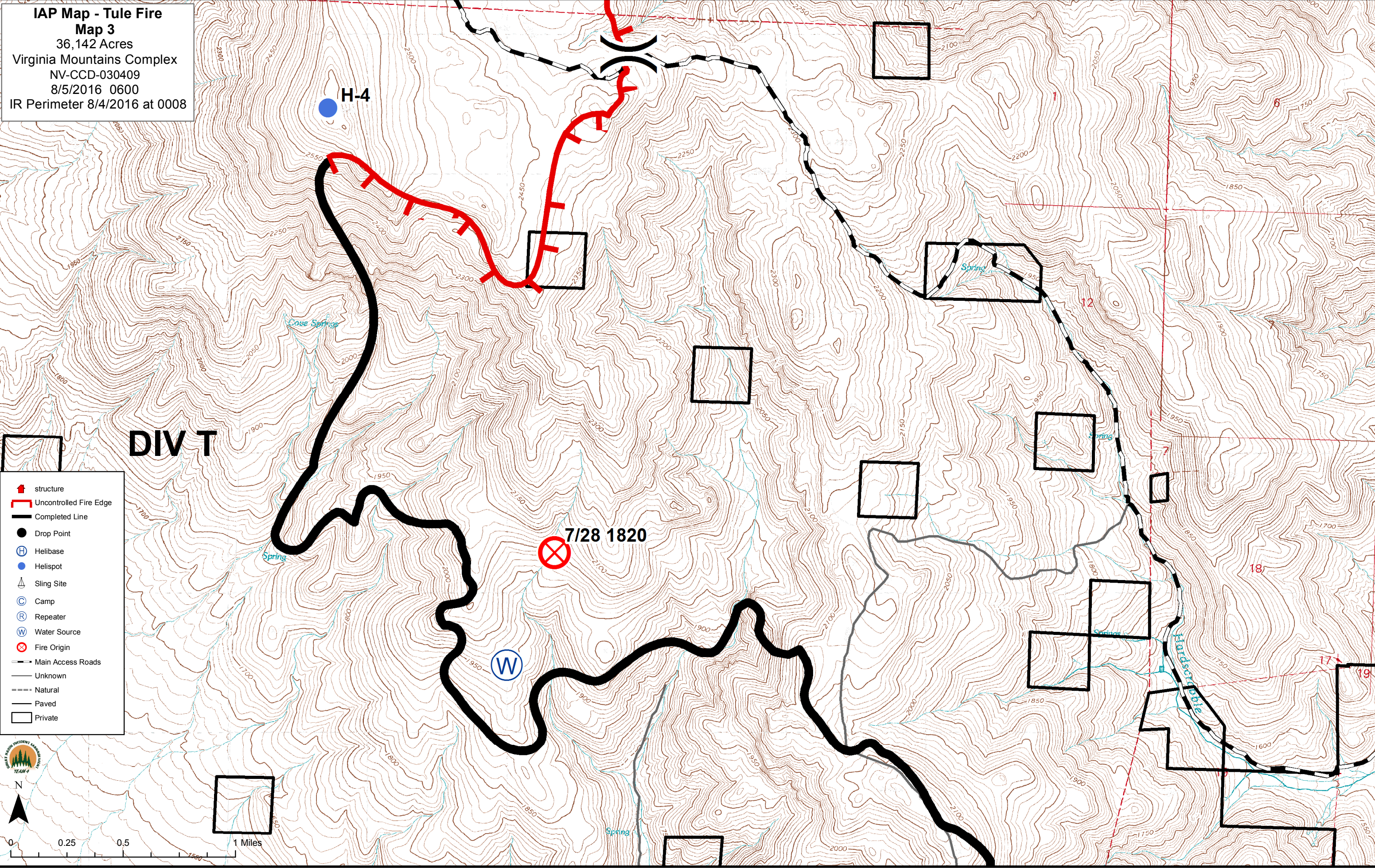
DIV U

DIV T

H-10

H-4

IAP Map - Tule Fire
Map 3
 36,142 Acres
 Virginia Mountains Complex
 NV-CCD-030409
 8/5/2016 0600
 IR Perimeter 8/4/2016 at 0008



- structure
- Uncontrolled Fire Edge
- Completed Line
- Drop Point
- Helibase
- Helispot
- Sling Site
- Camp
- Repeater
- Water Source
- Fire Origin
- Main Access Roads
- Unknown
- Natural
- Paved
- Private

N

0 0.25 0.5 1 Miles

DIV T

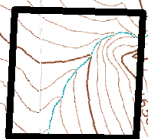
H-4

7/28 1820

W

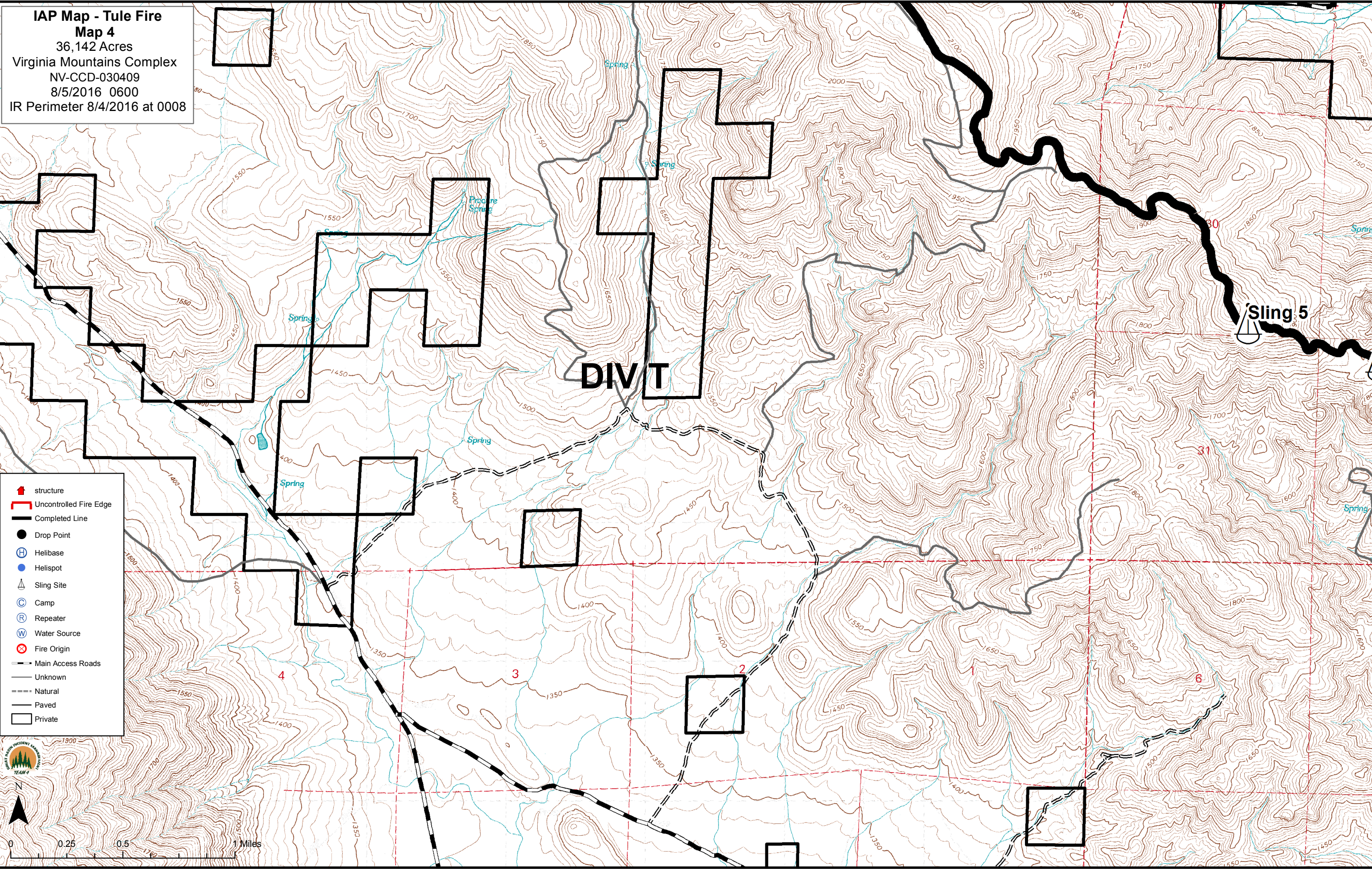
6
12
17
18
19

IAP Map - Tule Fire
Map 4
36,142 Acres
Virginia Mountains Complex
NV-CCD-030409
8/5/2016 0600
IR Perimeter 8/4/2016 at 0008

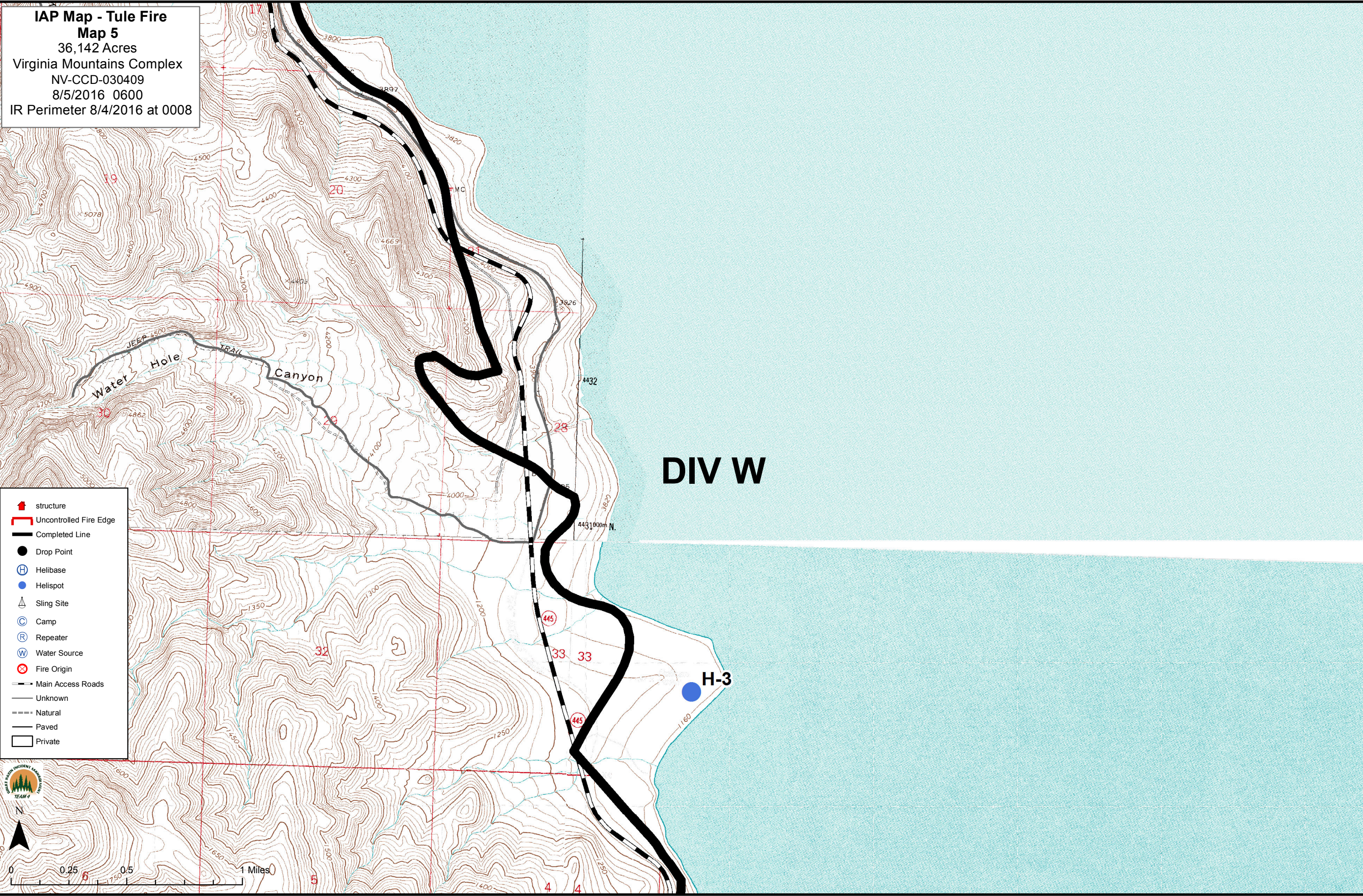


- structure
- Uncontrolled Fire Edge
- Completed Line
- Drop Point
- Helibase
- Helispot
- Sling Site
- Camp
- Repeater
- Water Source
- Fire Origin
- Main Access Roads
- Unknown
- Natural
- Paved
- Private

0 0.25 0.5 1 Miles



IAP Map - Tule Fire
Map 5
36,142 Acres
Virginia Mountains Complex
NV-CCD-030409
8/5/2016 0600
IR Perimeter 8/4/2016 at 0008



















- structure
- Uncontrolled Fire Edge
- Completed Line
- Drop Point
- Helibase
- Helispot
- Sling Site
- Camp
- Repeater
- Water Source
- Fire Origin
- Main Access Roads
- Unknown
- Natural
- Paved
- Private


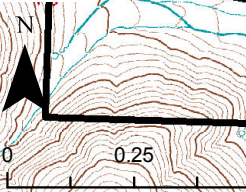
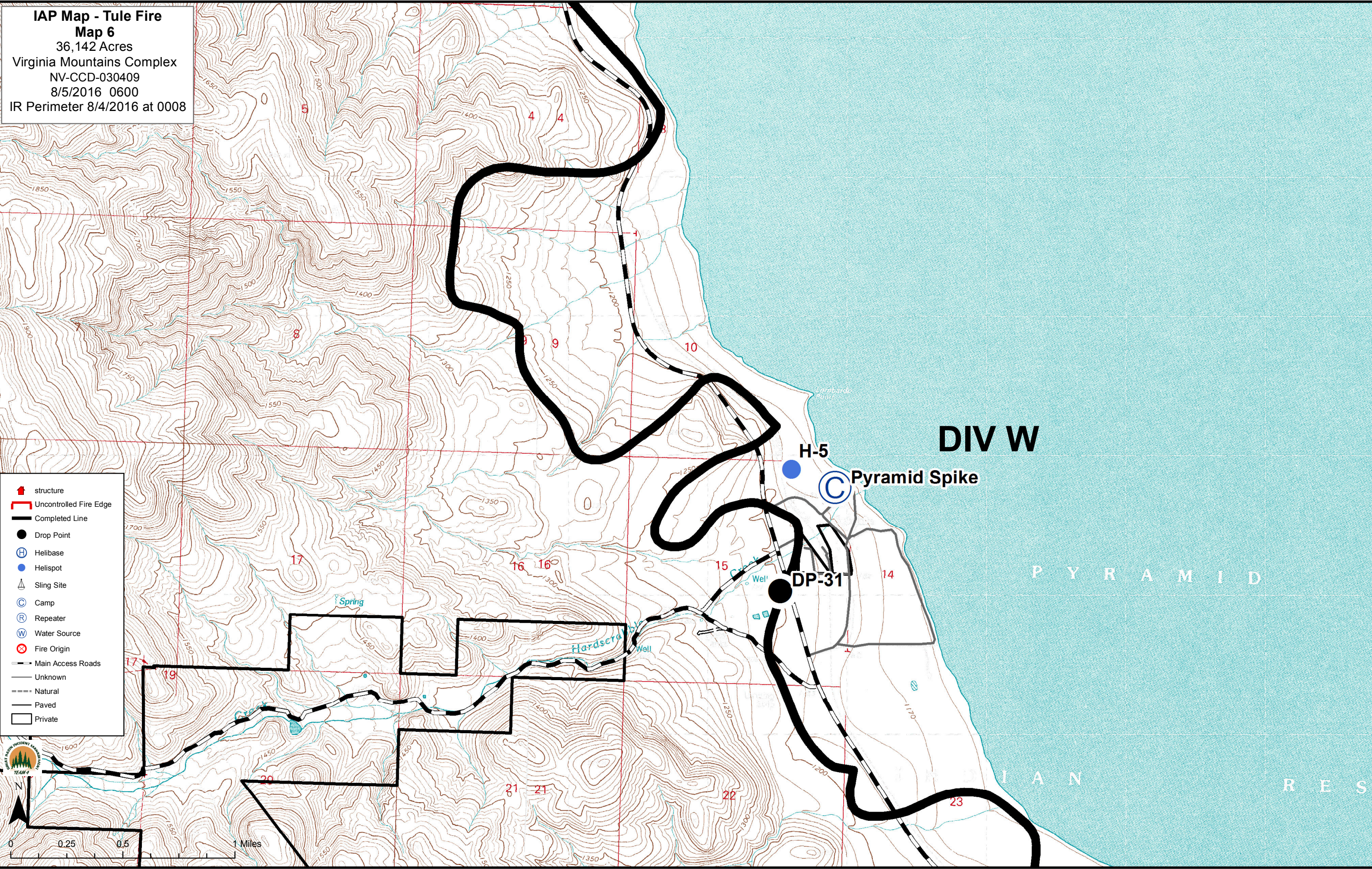
A north arrow pointing upwards and a scale bar showing 0, 0.25, 0.5, and 1 mile increments.

DIV W

H-3

IAP Map - Tule Fire
Map 6
 36,142 Acres
 Virginia Mountains Complex
 NV-CCD-030409
 8/5/2016 0600
 IR Perimeter 8/4/2016 at 0008

-  structure
-  Uncontrolled Fire Edge
-  Completed Line
-  Drop Point
-  Helibase
-  Helispot
-  Sling Site
-  Camp
-  Repeater
-  Water Source
-  Fire Origin
-  Main Access Roads
-  Unknown
-  Natural
-  Paved
-  Private

DIV W

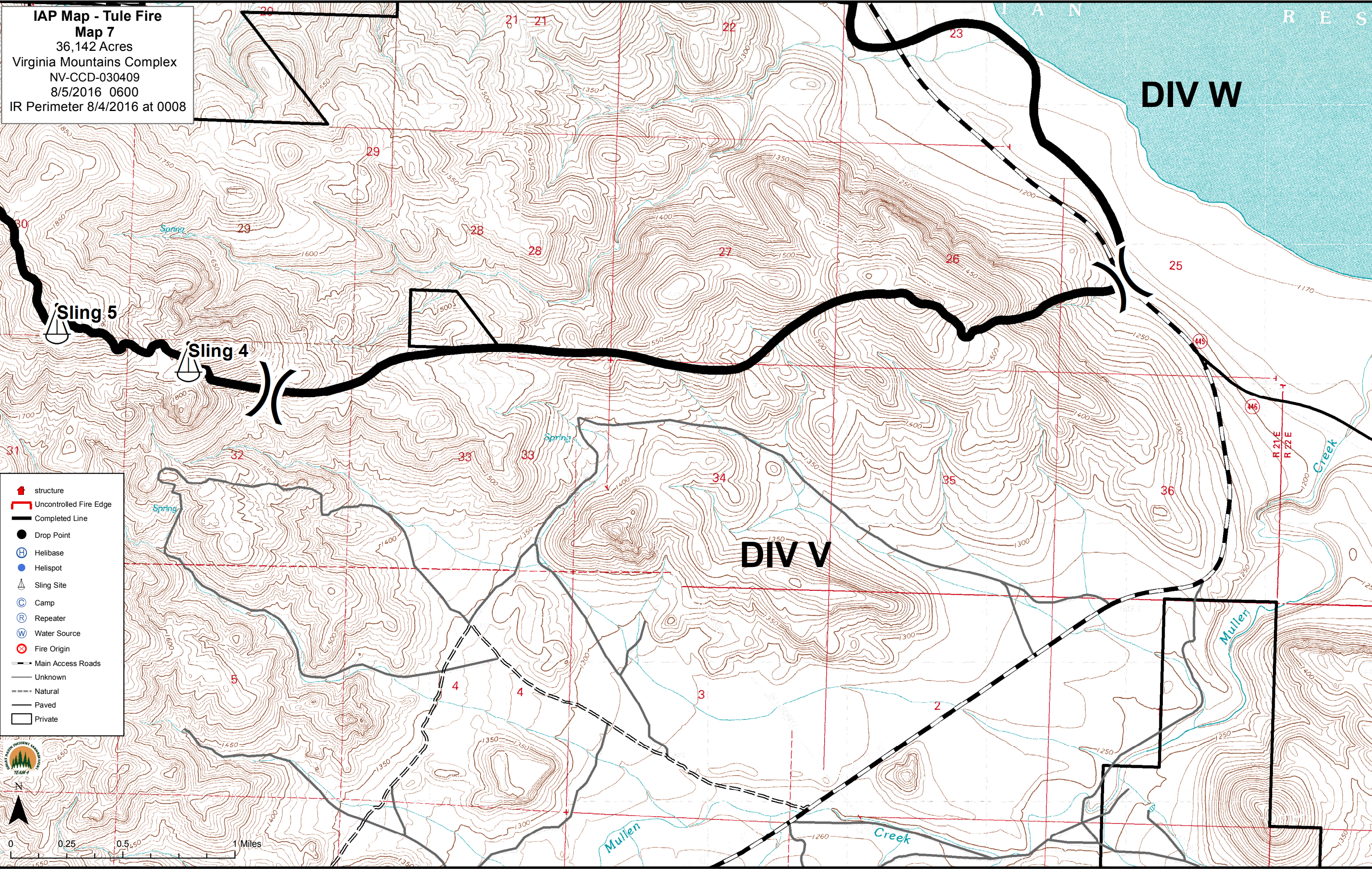
H-5
 (C) Pyramid Spike

DP-31

P Y R A M I D

I N D I A N R E S

IAP Map - Tule Fire
Map 7
 36,142 Acres
 Virginia Mountains Complex
 NV-CCD-030409
 8/5/2016 0600
 IR Perimeter 8/4/2016 at 0008



- structure
- Uncontrolled Fire Edge
- Completed Line
- Drop Point
- Helibase
- Helispot
- Sling Site
- Camp
- Repeater
- Water Source
- Fire Origin
- Main Access Roads
- Natural
- Paved
- Private

