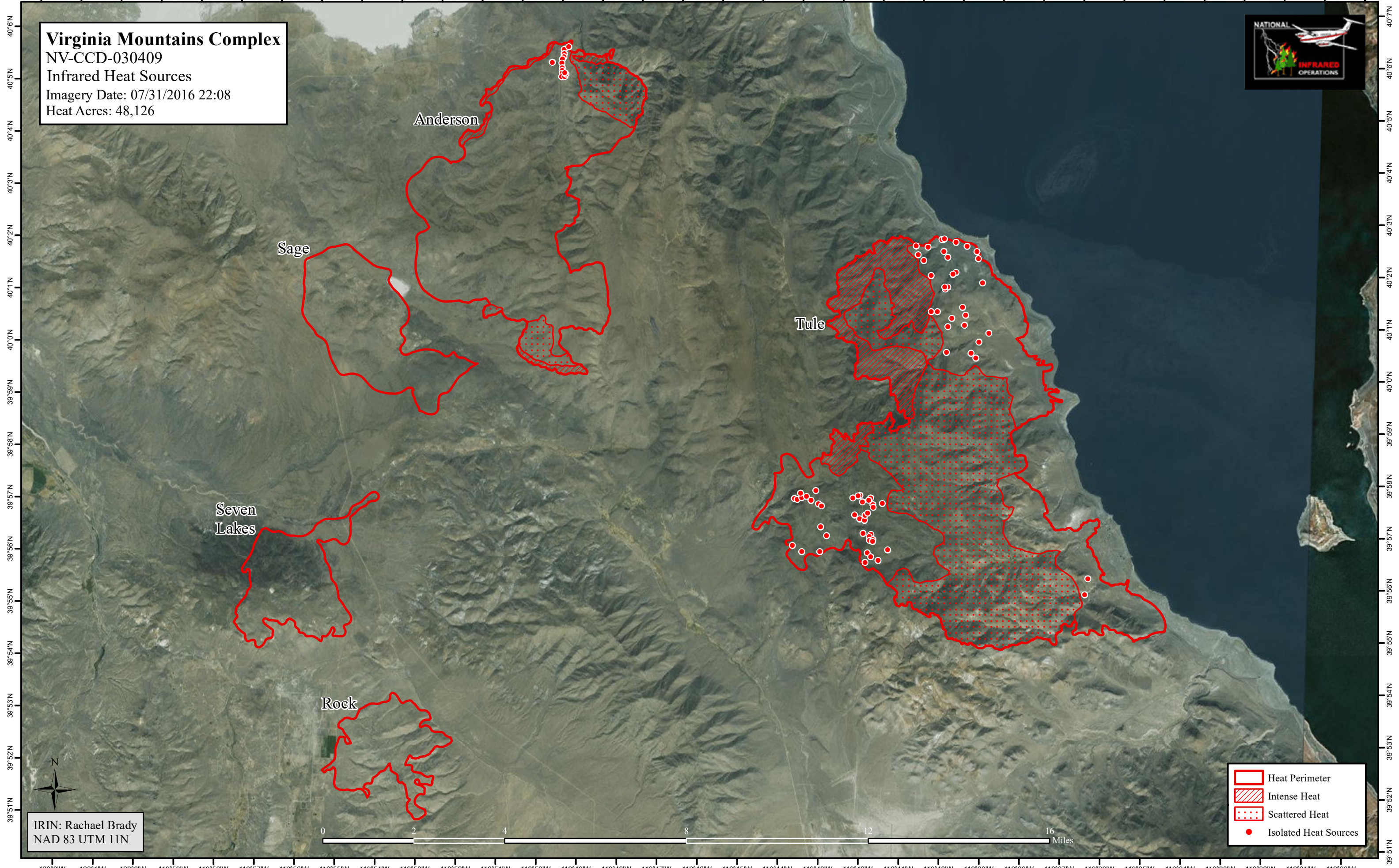


120°3'W 120°2'W 120°1'W 120°0'W 119°59'W 119°58'W 119°57'W 119°56'W 119°55'W 119°54'W 119°53'W 119°52'W 119°51'W 119°50'W 119°49'W 119°48'W 119°47'W 119°46'W 119°45'W 119°44'W 119°43'W 119°42'W 119°41'W 119°40'W 119°39'W 119°38'W 119°37'W 119°36'W 119°35'W 119°34'W 119°33'W 119°32'W 119°31'W 119°30'W

Virginia Mountains Complex
NV-CCD-030409
Infrared Heat Sources
Imagery Date: 07/31/2016 22:08
Heat Acres: 48,126



Anderson

Sage

Seven
Lakes





Rock

Tule



IRIN: Rachael Brady
NAD 83 UTM 11N



-  Heat Perimeter
-  Intense Heat
-  Scattered Heat
-  Isolated Heat Sources

120°2'W 120°1'W 120°0'W 119°59'W 119°58'W 119°57'W 119°56'W 119°55'W 119°54'W 119°53'W 119°52'W 119°51'W 119°50'W 119°49'W 119°48'W 119°47'W 119°46'W 119°45'W 119°44'W 119°43'W 119°42'W 119°41'W 119°40'W 119°39'W 119°38'W 119°37'W 119°36'W 119°35'W 119°34'W 119°33'W 119°32'W 119°31'W 119°30'W

40°6'N 40°5'N 40°4'N 40°3'N 40°2'N 40°1'N 40°0'N 39°59'N 39°58'N 39°57'N 39°56'N 39°55'N 39°54'N 39°53'N 39°52'N 39°51'N