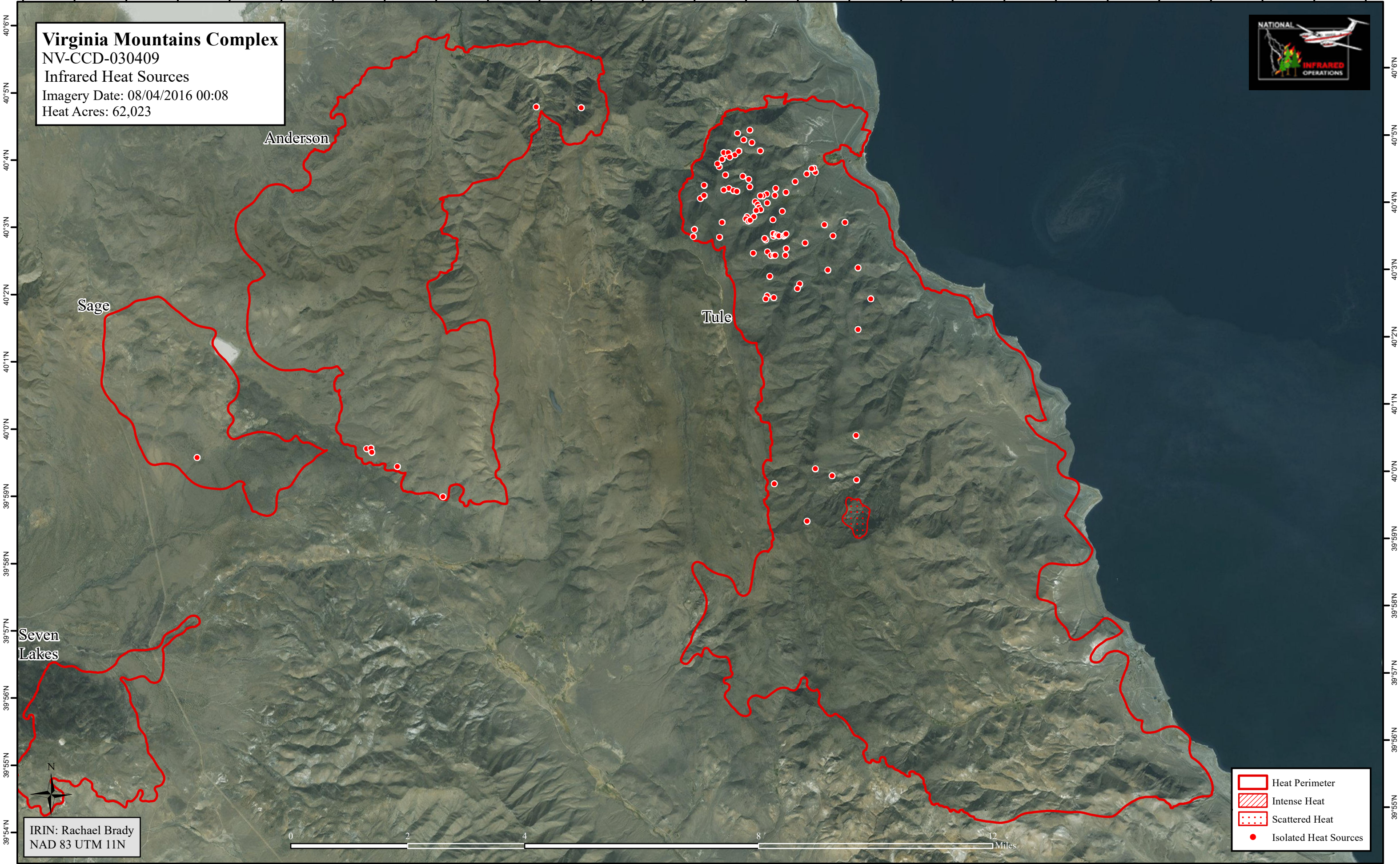
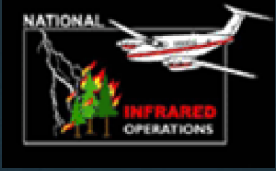


119°58'W 119°57'W 119°56'W 119°55'W 119°54'W 119°53'W 119°52'W 119°51'W 119°50'W 119°49'W 119°48'W 119°47'W 119°46'W 119°45'W 119°44'W 119°43'W 119°42'W 119°41'W 119°40'W 119°39'W 119°38'W 119°37'W 119°36'W 119°35'W 119°34'W 119°33'W 119°32'W

**Virginia Mountains Complex**  
NV-CCD-030409  
Infrared Heat Sources  
Imagery Date: 08/04/2016 00:08  
Heat Acres: 62,023



Anderson

Sage




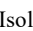
Tule

Seven  
Lakes



IRIN: Rachael Brady  
NAD 83 UTM 11N



-  Heat Perimeter
-  Intense Heat
-  Scattered Heat
-  Isolated Heat Sources

119°57'W 119°56'W 119°55'W 119°54'W 119°53'W 119°52'W 119°51'W 119°50'W 119°49'W 119°48'W 119°47'W 119°46'W 119°45'W 119°44'W 119°43'W 119°42'W 119°41'W 119°40'W 119°39'W 119°38'W 119°37'W 119°36'W 119°35'W 119°34'W 119°33'W 119°32'W

40°6'N  
40°5'N  
40°4'N  
40°3'N  
40°2'N  
40°1'N  
40°0'N  
39°59'N  
39°58'N  
39°57'N  
39°56'N  
39°55'N  
39°54'N

40°6'N  
40°5'N  
40°4'N  
40°3'N  
40°2'N  
40°1'N  
40°0'N  
39°59'N  
39°58'N  
39°57'N  
39°56'N  
39°55'N  
39°54'N