

Public Information Map BEARSKIN Fire

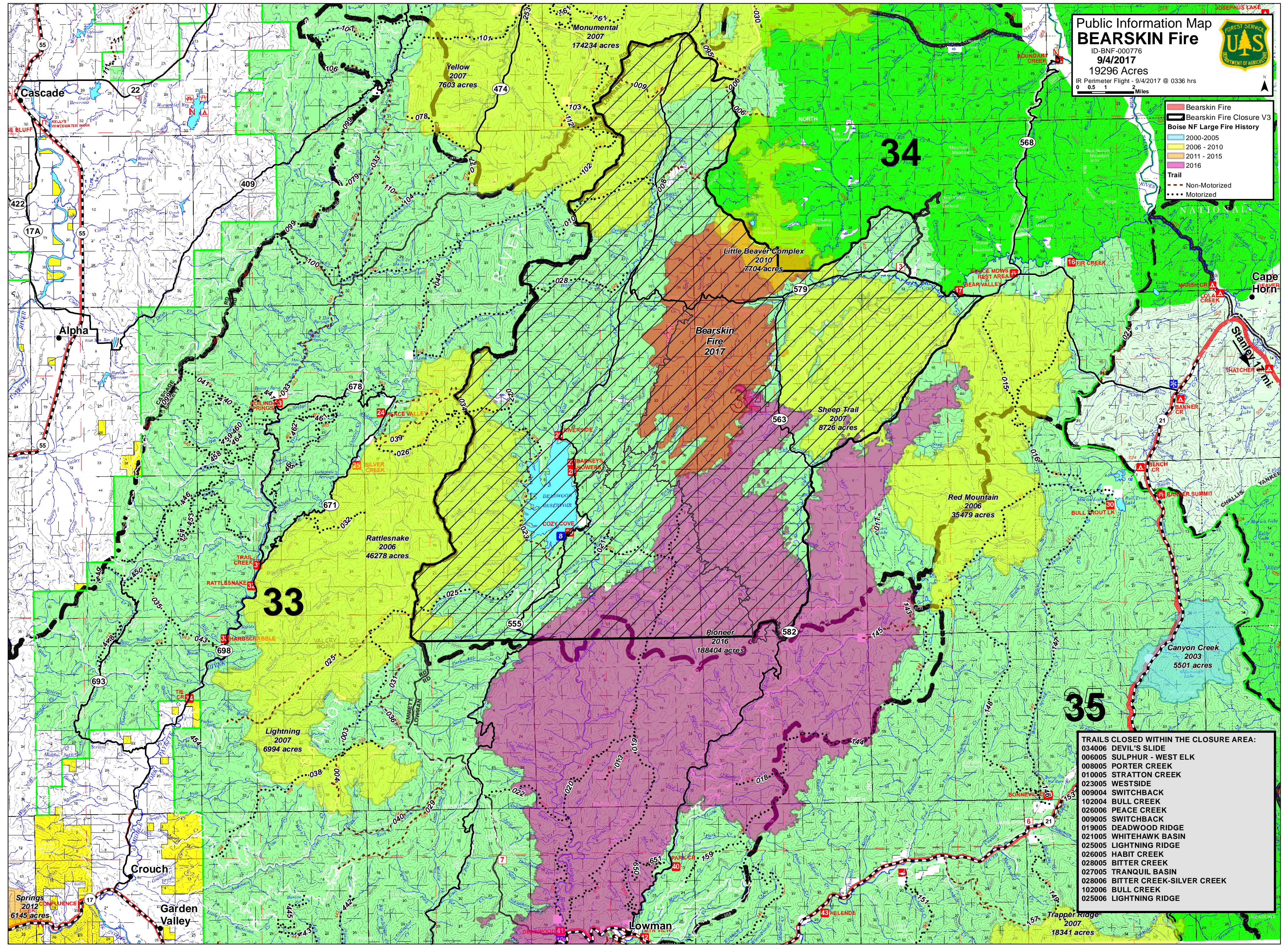
ID-BNF-000776
9/4/2017
19296 Acres

IR Perimeter Flight - 9/4/2017 @ 0336 hrs

0 0.5 1 Miles



- Bearskin Fire
- Bearskin Fire Closure V3
- Boise NF Large Fire History**
- 2000-2005
- 2006 - 2010
- 2011 - 2015
- 2016
- Trail**
- Non-Motorized
- Motorized



- TRAILS CLOSED WITHIN THE CLOSURE AREA:**
- 034006 DEVIL'S SLIDE
 - 006005 SULPHUR - WEST ELK
 - 008005 PORTER CREEK
 - 010005 STRATTON CREEK
 - 023005 WESTSIDE
 - 009004 SWITCHBACK
 - 102004 BULL CREEK
 - 026006 PEACE CREEK
 - 009005 SWITCHBACK
 - 019005 DEADWOOD RIDGE
 - 021005 WHITEHAWK BASIN
 - 025005 LIGHTNING RIDGE
 - 026005 HABIT CREEK
 - 028005 BITTER CREEK
 - 027005 TRANQUIL BASIN
 - 028006 BITTER CREEK-SILVER CREEK
 - 102006 BULL CREEK
 - 025006 LIGHTNING RIDGE

33

34

35

Cascade

Alpha

Crouch

Garden Valley

Lowman

Cape Horn

Springs
2012
6145 acres

Rattlesnake
2006
46278 acres

Lightning
2007
6994 acres

Yellow
2007
7603 acres

Monumental
2007
174234 acres

Little Beaver Complex
2010
7704 acres

Bearskin
Fire
2017

Sheep Trail
2007
8726 acres

Red Mountain
2006
35479 acres

Pioneer
2016
188404 acres

Canyon Creek
2003
5501 acres

Trapper Ridge
2007
18341 acres