
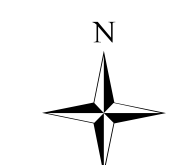
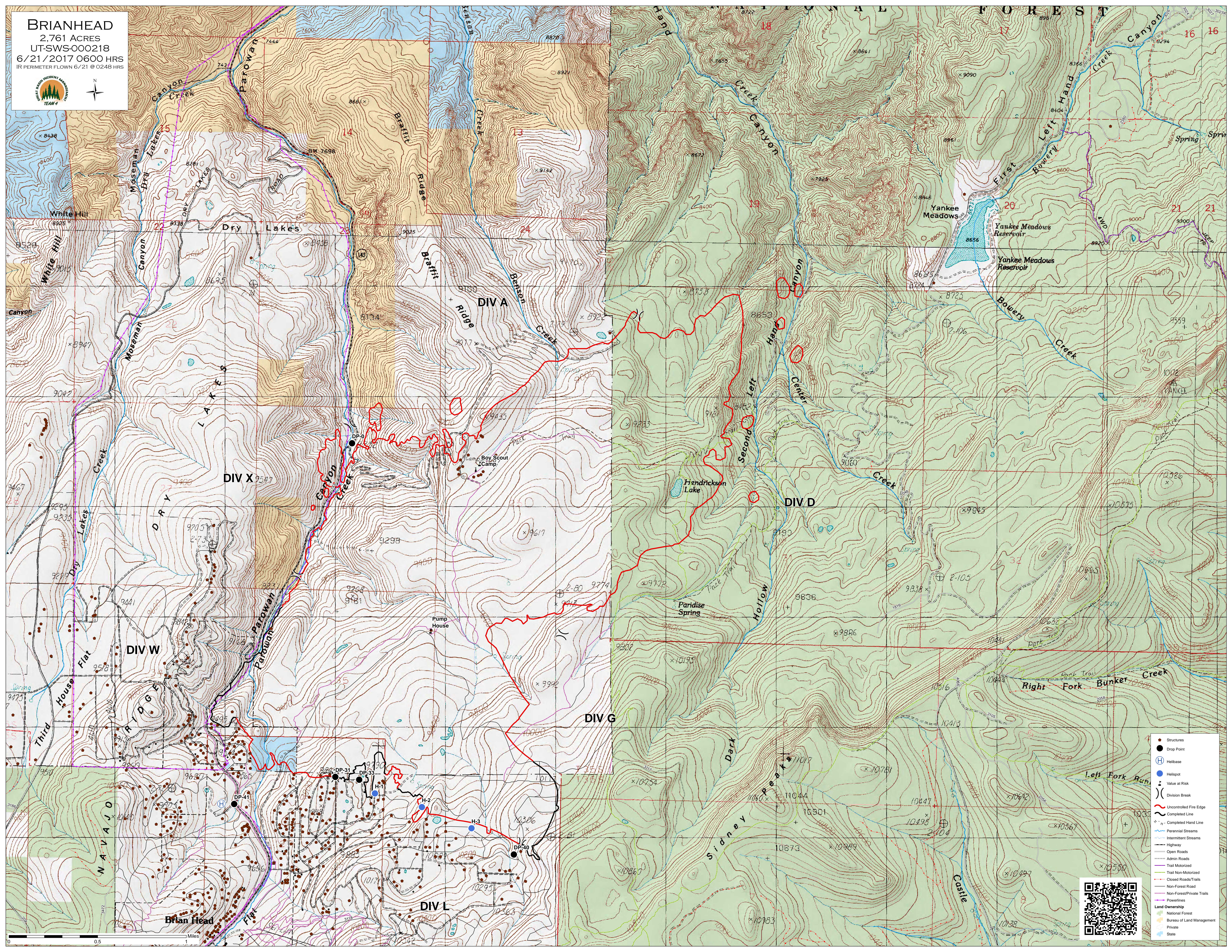


BRIANHEAD
 2,761 ACRES
 UT-SWS-000218
 6/21/2017 0600 HRS
 IR PERIMETER FLOWN 6/21 @ 0248 HRS

- Structures
 - Drop Point
 - ⊕ Helibase
 - ⊕ Value at Risk
 - ⊕ Division Break
 - ⊕ Uncontrolled Fire Edge
 - ⊕ Completed Line
 - ⊕ Permitted Hand Line
 - ⊕ Perennial Streams
 - ⊕ Intermittent Streams
 - ⊕ Highway
 - ⊕ Open Roads
 - ⊕ Admin Roads
 - ⊕ Trail Motorized
 - ⊕ Trail Non-Motorized
 - ⊕ Closed Roads/Trails
 - ⊕ Non-Forest Road
 - ⊕ Non-Forest/Private Trails
 - ⊕ Powerlines
- Land Ownership**
- ⊕ National Forest
 - ⊕ Bureau of Land Management
 - ⊕ Private
 - ⊕ State

