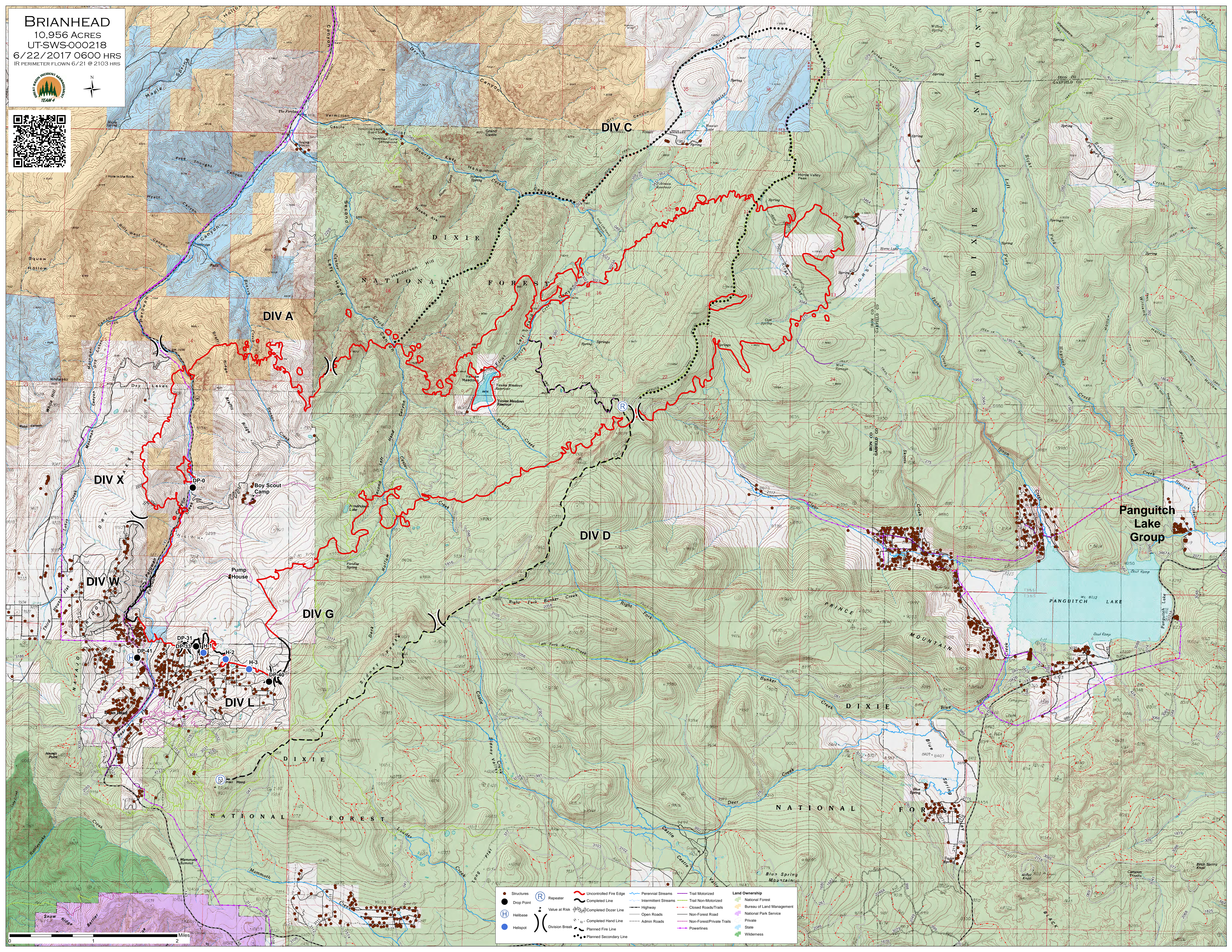


BRIANHEAD
 10,956 ACRES
 UT-SWS-000218
 6/22/2017 0600 HRS
 IR PERIMETER FLOWN 6/21 @ 2103 HRS



● Structures	Ⓡ Repeater	— Uncontrolled Fire Edge	— Perennial Streams	— Trail Motorized	Land Ownership
● Drop Point	Ⓡ Value at Risk	— Completed Line	— Intermittent Streams	— Trail Non-Motorized	● National Forest
Ⓡ Helibase	Ⓡ Completed Dozer Line	— Completed Hand Line	— Highway	— Closed Roads/Trails	● Bureau of Land Management
Ⓡ Helipoint	Ⓡ Division Break	— Planned Fire Line	— Open Roads	— Non-Forest Road	● National Park Service
			— Admin Roads	— Non-Forest/Private Trails	● Private
				— Powerlines	● State
					● Wilderness

