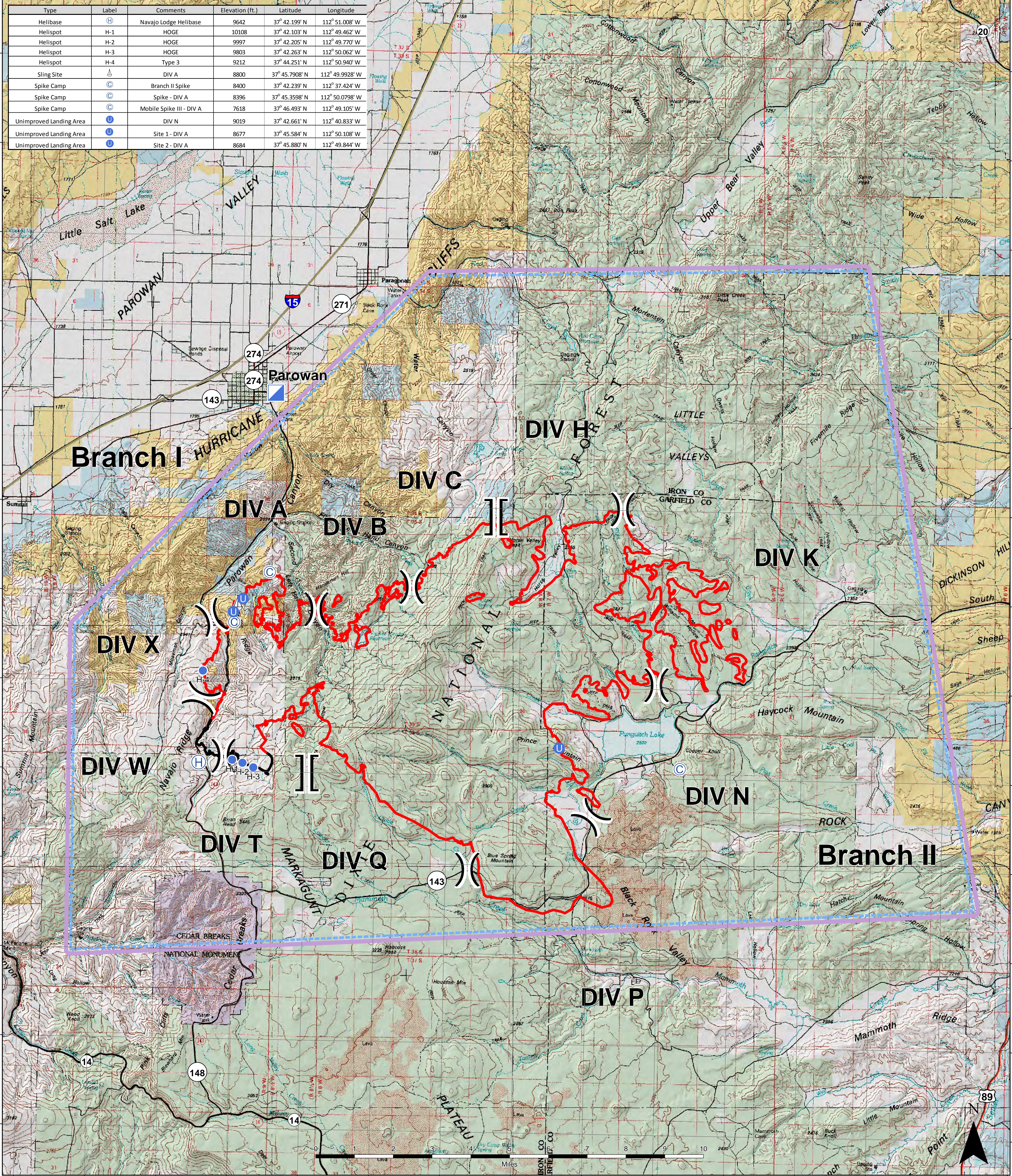


Type	Label	Comments	Elevation (ft.)	Latitude	Longitude
Helibase	H	Navajo Lodge Helibase	9642	37° 42.199' N	112° 51.008' W
Helispot	H-1	HOGÉ	10108	37° 42.103' N	112° 49.462' W
Helispot	H-2	HOGÉ	9997	37° 42.205' N	112° 49.770' W
Helispot	H-3	HOGÉ	9803	37° 42.263' N	112° 50.062' W
Helispot	H-4	Type 3	9212	37° 44.251' N	112° 50.940' W
Sling Site	△	DIV A	8800	37° 45.7908' N	112° 49.9928' W
Spike Camp	⊙	Branch II Spike	8400	37° 42.239' N	112° 37.424' W
Spike Camp	⊙	Spike - DIV A	8396	37° 45.3598' N	112° 50.0798' W
Spike Camp	⊙	Mobile Spike III - DIV A	7618	37° 46.493' N	112° 49.105' W
Unimproved Landing Area	U	DIV N	9019	37° 42.661' N	112° 40.833' W
Unimproved Landing Area	U	Site 1 - DIV A	8677	37° 45.584' N	112° 50.108' W
Unimproved Landing Area	U	Site 2 - DIV A	8684	37° 45.880' N	112° 49.844' W



# Aviation Map

Brianhead  
 41,285 Acres  
 UT-SWS-000218  
 6/25/17 0600  
 IR Perimeter 6/24/17 at 1630

TFR	Uncontrolled Fire Edge	Completed Line	Helispot	Sling Site	Incident Command Post	National Forest	National Park Service
Division Break	Branch Break	Helibase	Unimproved Landing Area	Spike Camp	Bureau of Land Management	State	Private

