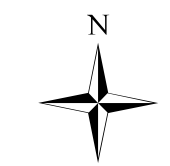


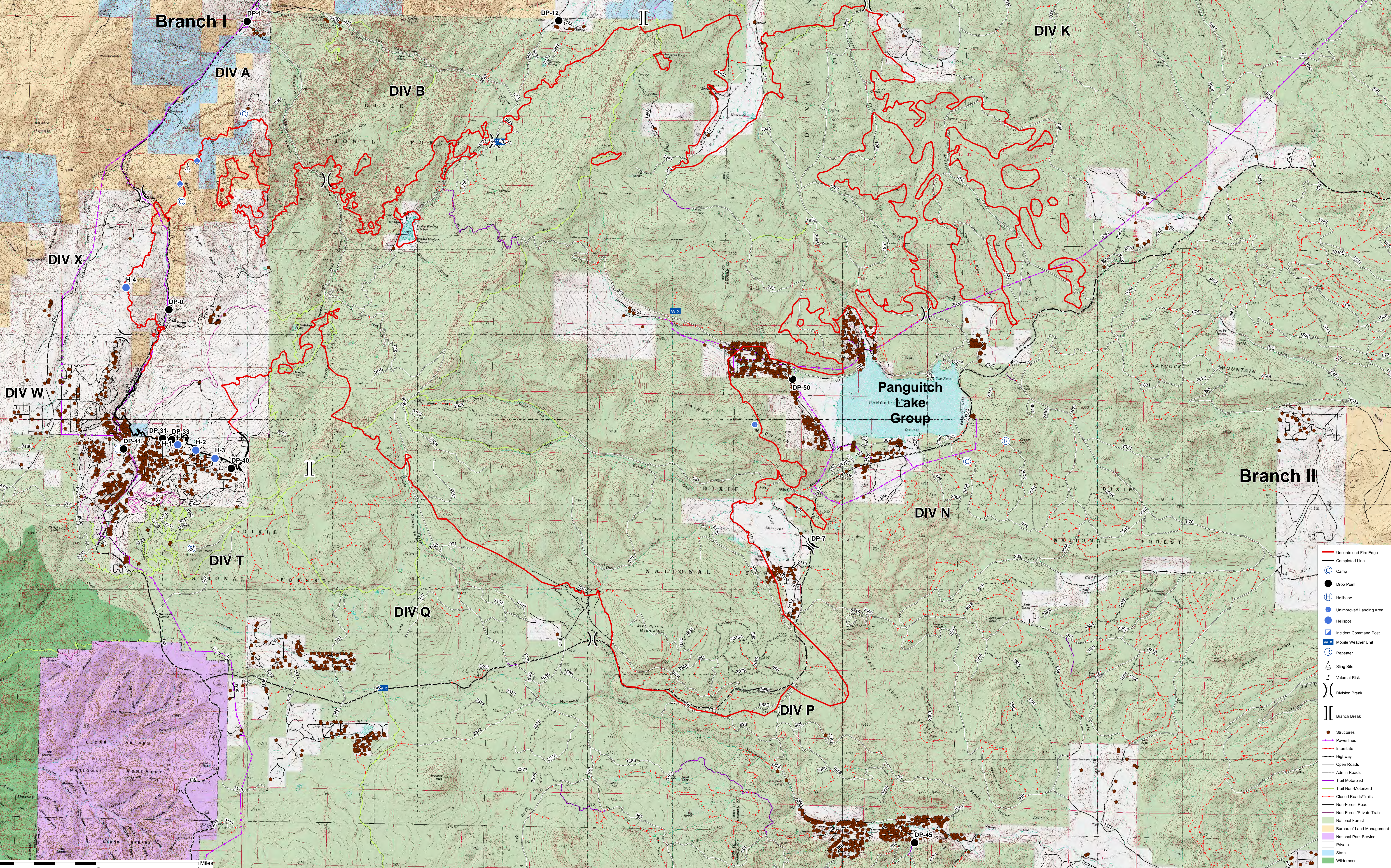
OPS MAP

BRIANHEAD
41,285 ACRES
UT-SWS-000218
6/25/2017 DAY
IR FLOWN 6/24 @ 1030 HRS



This map with Topo

This map with Imagery



- Uncontrolled Fire Edge
- Completed Line
- Camp
- Drop Point
- Helibase
- Unimproved Landing Area
- Helispot
- Incident Command Post
- Mobile Weather Unit
- Repeater
- Sling Site
- Value at Risk
- Division Break
- Branch Break
- Structures
- Powerlines
- Interstate
- Highway
- Open Roads
- Admin Roads
- Trail Motorized
- Trail Non-Motorized
- Closed Roads/Trails
- Non-Forest Road
- Non-Forest/Private Trails
- National Forest
- Bureau of Land Management
- National Park Service
- State
- Wilderness

0 1.5 3 Miles