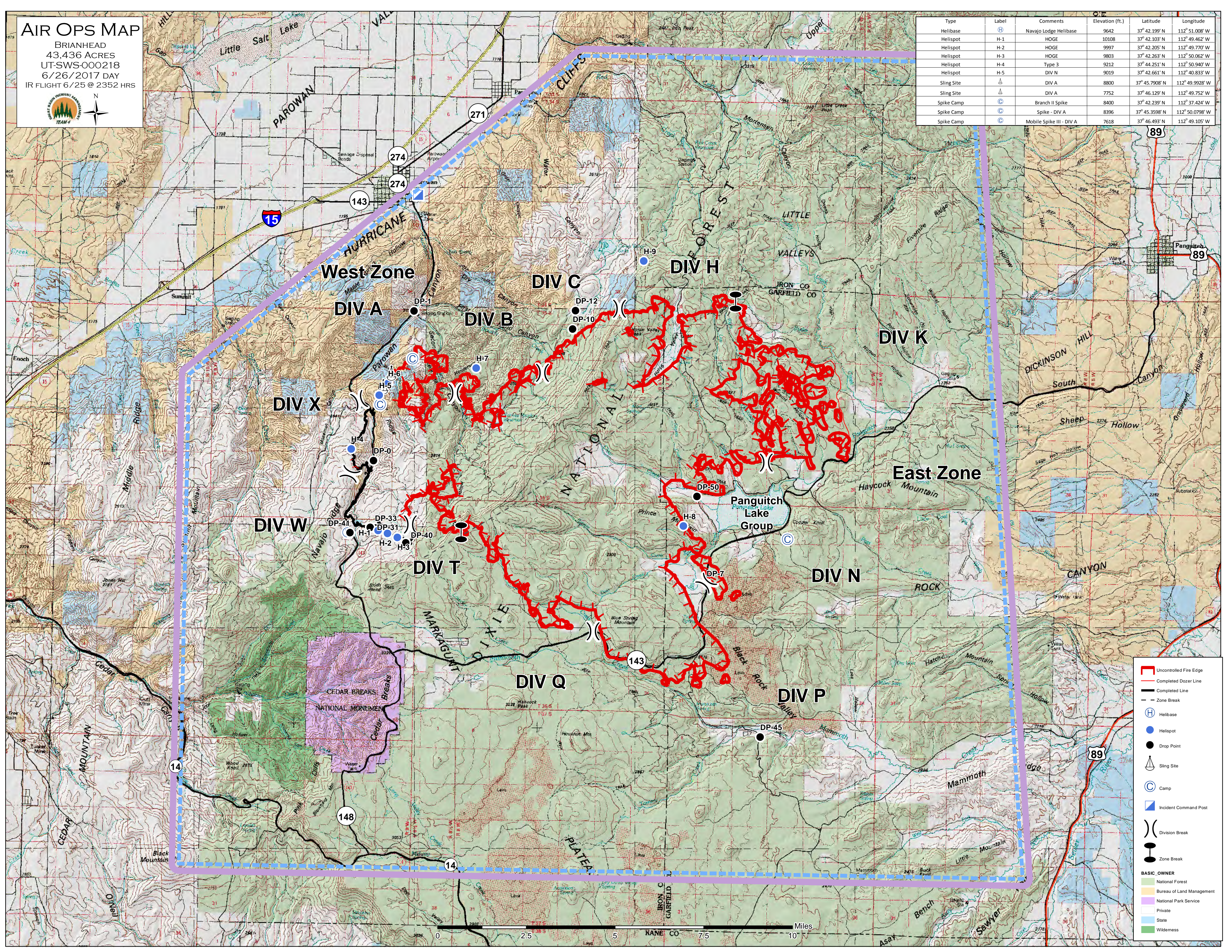


AIR OPS MAP

BRIANHEAD
43,436 ACRES
UT-SWS-000218
6/26/2017 DAY
IR FLIGHT 6/25 @ 2352 HRS



Type	Label	Comments	Elevation (ft.)	Latitude	Longitude
Helibase	H	Navajo Lodge Helibase	9642	37° 42.199' N	112° 51.008' W
Helispot	H-1	HOGE	10108	37° 42.103' N	112° 49.462' W
Helispot	H-2	HOGE	9997	37° 42.205' N	112° 49.770' W
Helispot	H-3	HOGE	9803	37° 42.263' N	112° 50.062' W
Helispot	H-4	Type 3	9212	37° 44.251' N	112° 50.940' W
Helispot	H-5	DIV N	9019	37° 42.661' N	112° 40.833' W
Sling Site	△	DIV A	8800	37° 45.7908' N	112° 49.9928' W
Sling Site	△	DIV A	7752	37° 46.129' N	112° 49.752' W
Spike Camp	⊙	Branch II Spike	8400	37° 42.239' N	112° 37.424' W
Spike Camp	⊙	Spike - DIV A	8396	37° 45.3598' N	112° 50.0798' W
Spike Camp	⊙	Mobile Spike III - DIV A	7618	37° 46.493' N	112° 49.105' W



	Uncontrolled Fire Edge
	Completed Dozer Line
	Completed Line
	Zone Break
	Helibase
	Helispot
	Drop Point
	Sling Site
	Camp
	Incident Command Post
	Division Break
	Zone Break

BASIC OWNER

	National Forest
	Bureau of Land Management
	National Park Service
	Private
	State
	Wilderness