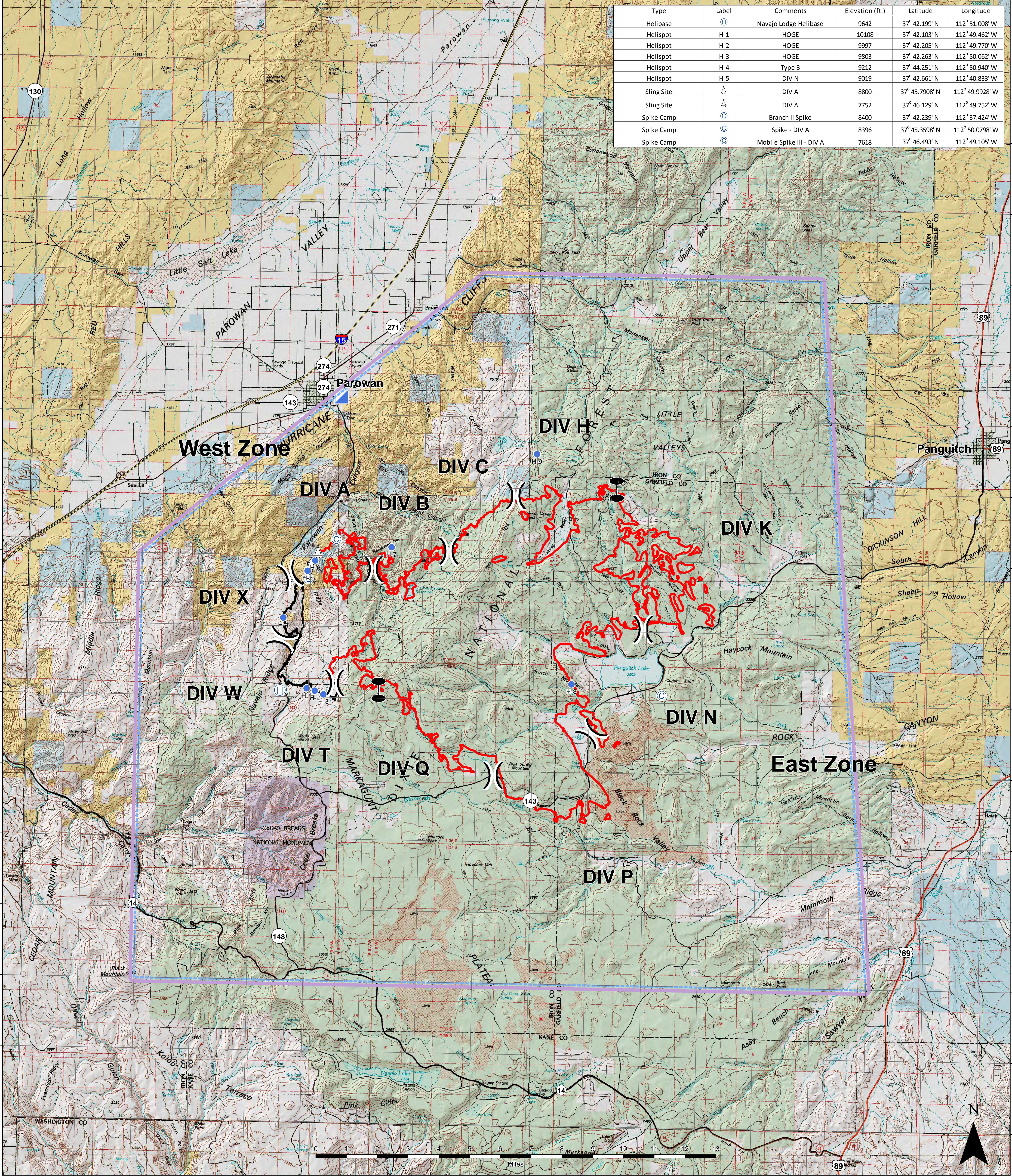


Type	Label	Comments	Elevation (ft.)	Latitude	Longitude
Helibase	H	Navajo Lodge Helibase	9642	37° 42.199' N	112° 51.008' W
Helispot	H-1	HOGE	10108	37° 42.103' N	112° 49.462' W
Helispot	H-2	HOGE	9997	37° 42.205' N	112° 49.770' W
Helispot	H-3	HOGE	9803	37° 42.263' N	112° 50.062' W
Helispot	H-4	Type 3	9212	37° 44.251' N	112° 50.940' W
Helispot	H-5	DIV N	9019	37° 42.661' N	112° 40.833' W
Sling Site	△	DIV A	8800	37° 45.7908' N	112° 49.9928' W
Sling Site	△	DIV A	7752	37° 46.129' N	112° 49.752' W
Spike Camp	⊙	Branch II Spike	8400	37° 42.239' N	112° 37.424' W
Spike Camp	⊙	Spike - DIV A	8396	37° 45.3598' N	112° 50.0798' W
Spike Camp	⊙	Mobile Spike III - DIV A	7618	37° 46.493' N	112° 49.105' W



# Air Ops Map

Brianhead  
 43, 436 Acres  
 UT-SWS-000218  
 6/26/17 0600  
 IR Perimeter 6/25/17 at 2352

7_9048	Uncontrolled Fire Edge	Completed Line	Zone Break	Helispot	Sling Site	Incident Command Post	Spike Camp	<b>Land Status</b>	National Forest	Bureau of Land Management	National Park Service	State	Private
Division Break	Zone Break	Helibase											

