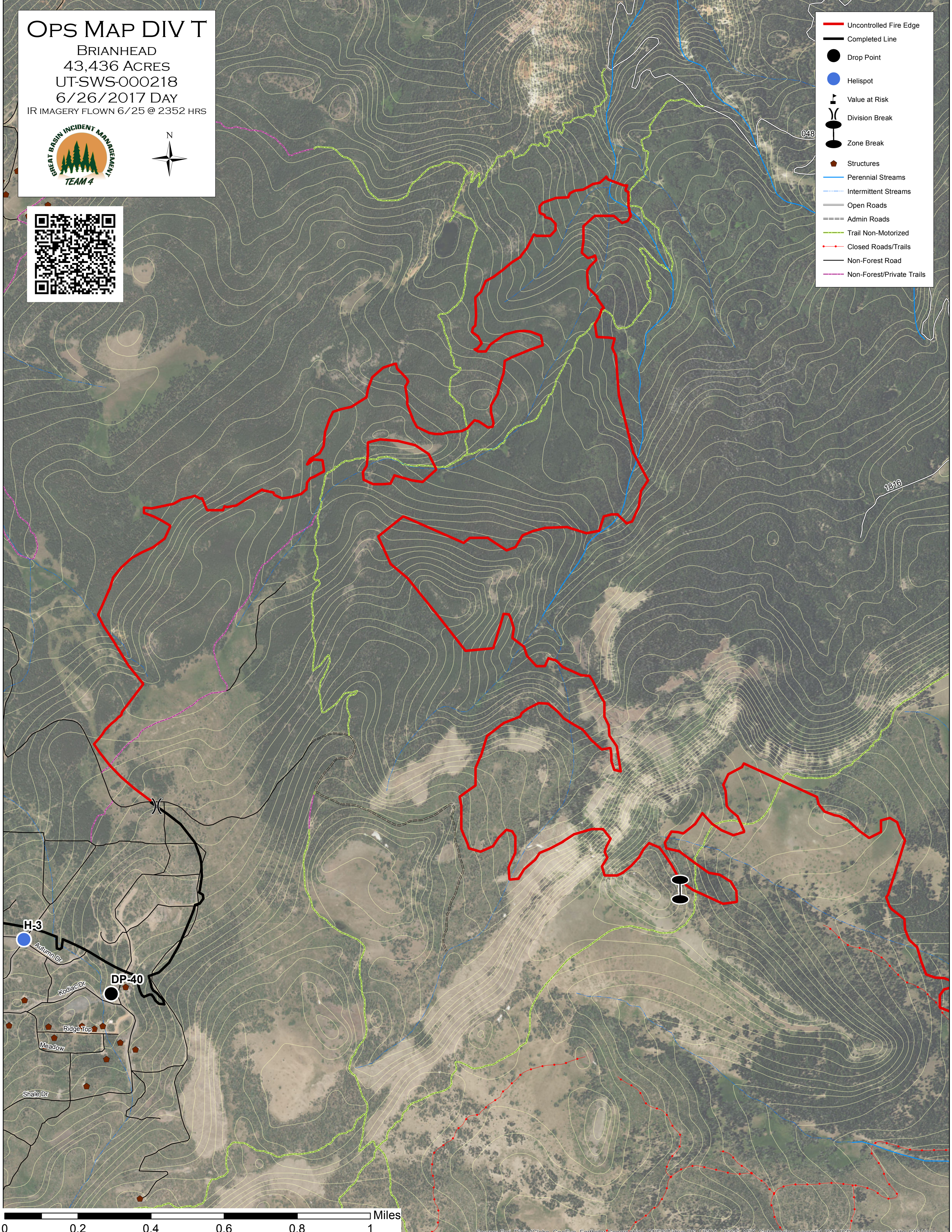


OPS MAP DIV T

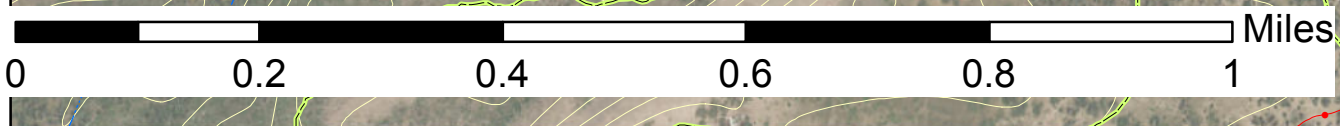
BRIANHEAD
43,436 ACRES
UT-SWS-000218
6/26/2017 DAY
IR IMAGERY FLOWN 6/25 @ 2352 HRS



- Uncontrolled Fire Edge
- Completed Line
- Drop Point
- Helispot
- Value at Risk
- Division Break
- Zone Break
- Structures
- Perennial Streams
- Intermittent Streams
- Open Roads
- Admin Roads
- Trail Non-Motorized
- Closed Roads/Trails
- Non-Forest Road
- Non-Forest/Private Trails



H-3
Autumn Dr
Kodiak Dr
DP-40
Ridge Top
Meadow
Shale Dr



Source: Esri, DigitalGlobe, GeoEye, Earthstar Geographics, CNES/Airbus DS, USDA, USGS, AEX, Geomatics, Aerogrid, IGN, IGP, swisstopo, and the GIS User Community