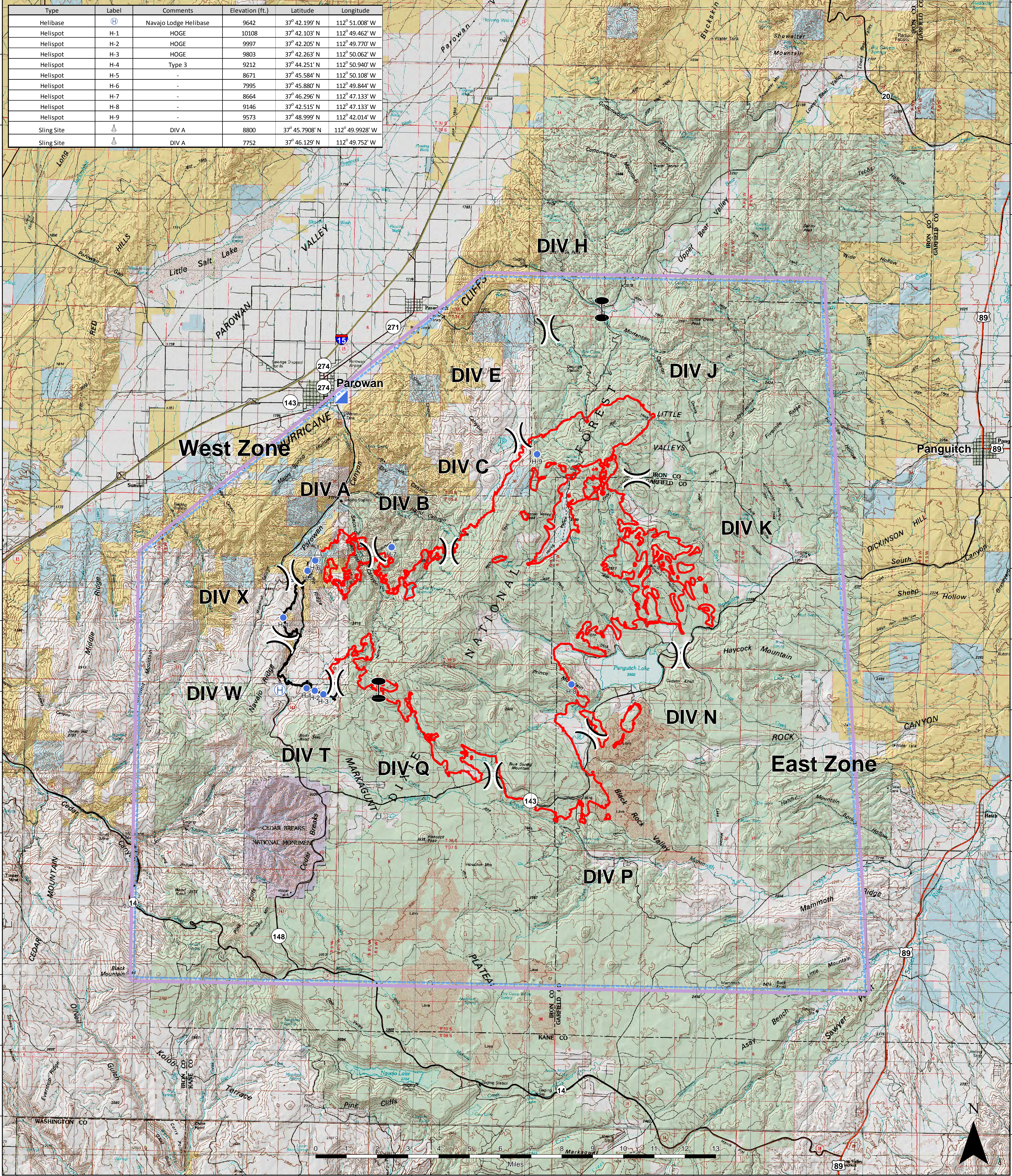


Type	Label	Comments	Elevation (ft.)	Latitude	Longitude
Helibase	(H)	Navajo Lodge Helibase	9642	37° 42.199' N	112° 51.008' W
Helispot	H-1	HOGÉ	10108	37° 42.103' N	112° 49.462' W
Helispot	H-2	HOGÉ	9997	37° 42.205' N	112° 49.770' W
Helispot	H-3	HOGÉ	9803	37° 42.263' N	112° 50.062' W
Helispot	H-4	Type 3	9212	37° 44.251' N	112° 50.940' W
Helispot	H-5	-	8671	37° 45.584' N	112° 50.108' W
Helispot	H-6	-	7995	37° 45.880' N	112° 49.844' W
Helispot	H-7	-	8664	37° 46.296' N	112° 47.133' W
Helispot	H-8	-	9146	37° 42.515' N	112° 47.133' W
Helispot	H-9	-	9573	37° 48.999' N	112° 42.014' W
Sling Site	(S)	DIV A	8800	37° 45.7908' N	112° 49.9928' W
Sling Site	(S)	DIV A	7752	37° 46.129' N	112° 49.752' W



**AIR OPS**  
**BRIANHEAD - WEST ZONE**  
 49,626 ACRES  
 UT-SWS-000218  
 6/27/2017 0600 HRS  
 IR IMAGERY FLOWN 6/27 @ 0011 HRS

7_9048	Uncontrolled Fire Edge	Completed Line	Zone Break	Helispot	Sling Site	Incident Command Post	<b>Land Status</b>	National Forest	State	Private
Division Break	Zone Break	Helibase	Bureau of Land Management	National Park Service						

