

# TRANSPORTATION

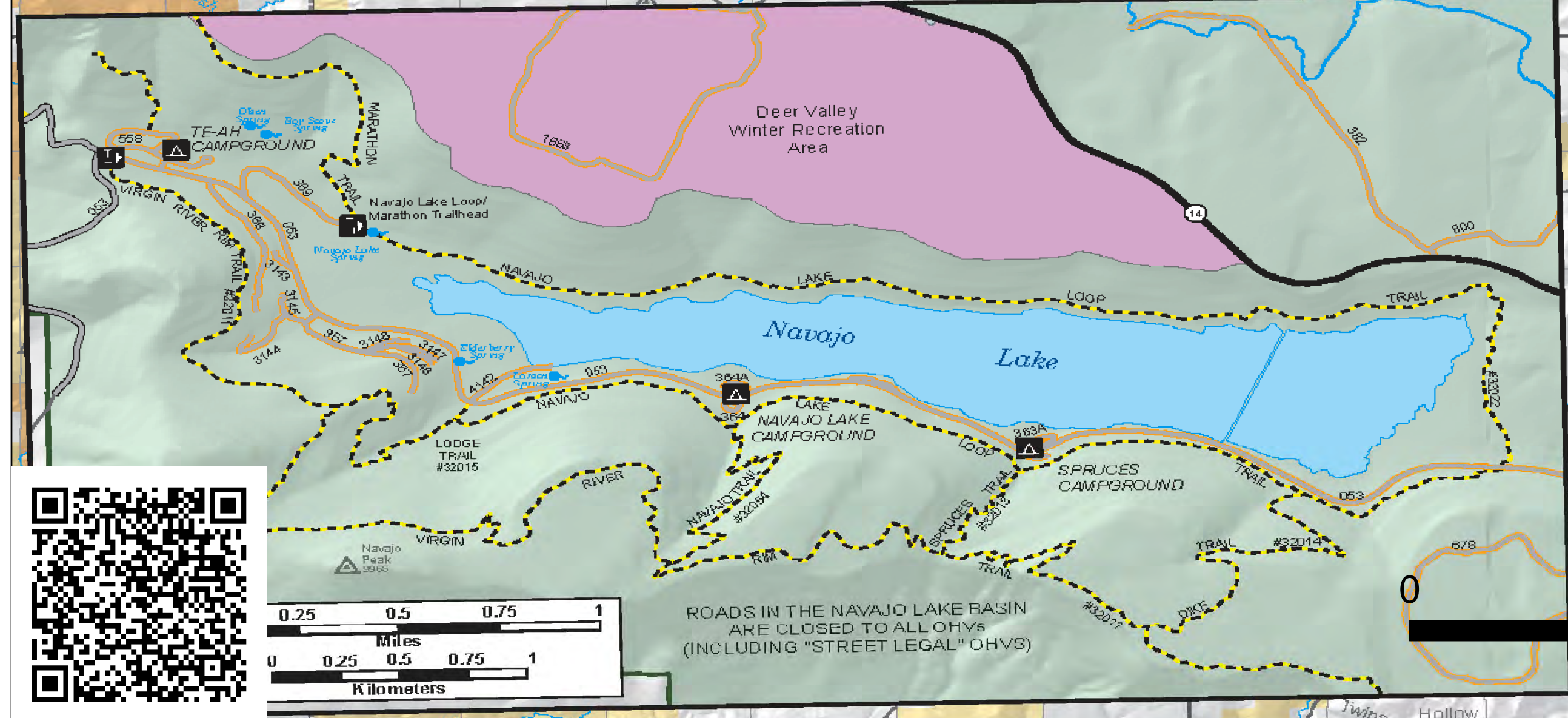
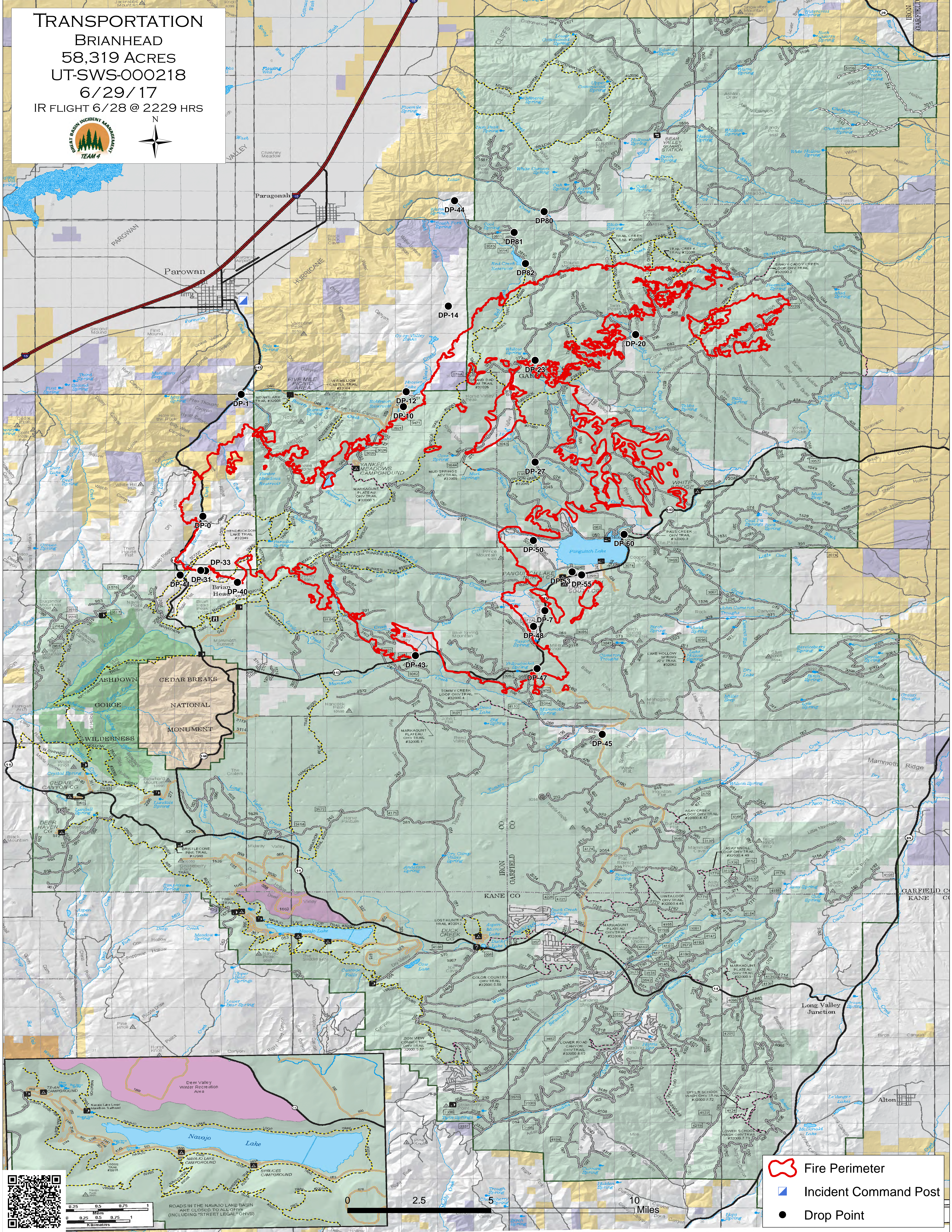
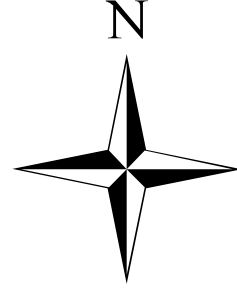
BRIANHEAD

58,319 ACRES

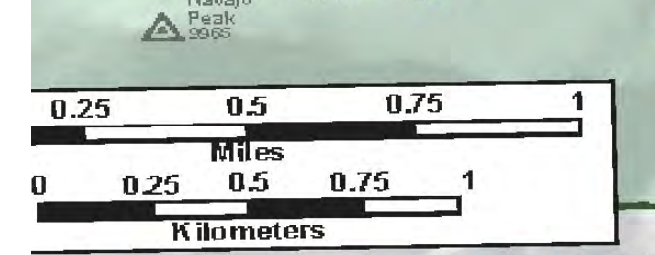
UT-SWS-000218

6/29/17

IR FLIGHT 6/28 @ 2229 HRS



- Fire Perimeter
- Incident Command Post
- Drop Point



ROADS IN THE NAVAJO LAKE BASIN ARE CLOSED TO ALL OHVs (INCLUDING "STREET LEGAL" OHVs)

0 2.5 10 Miles