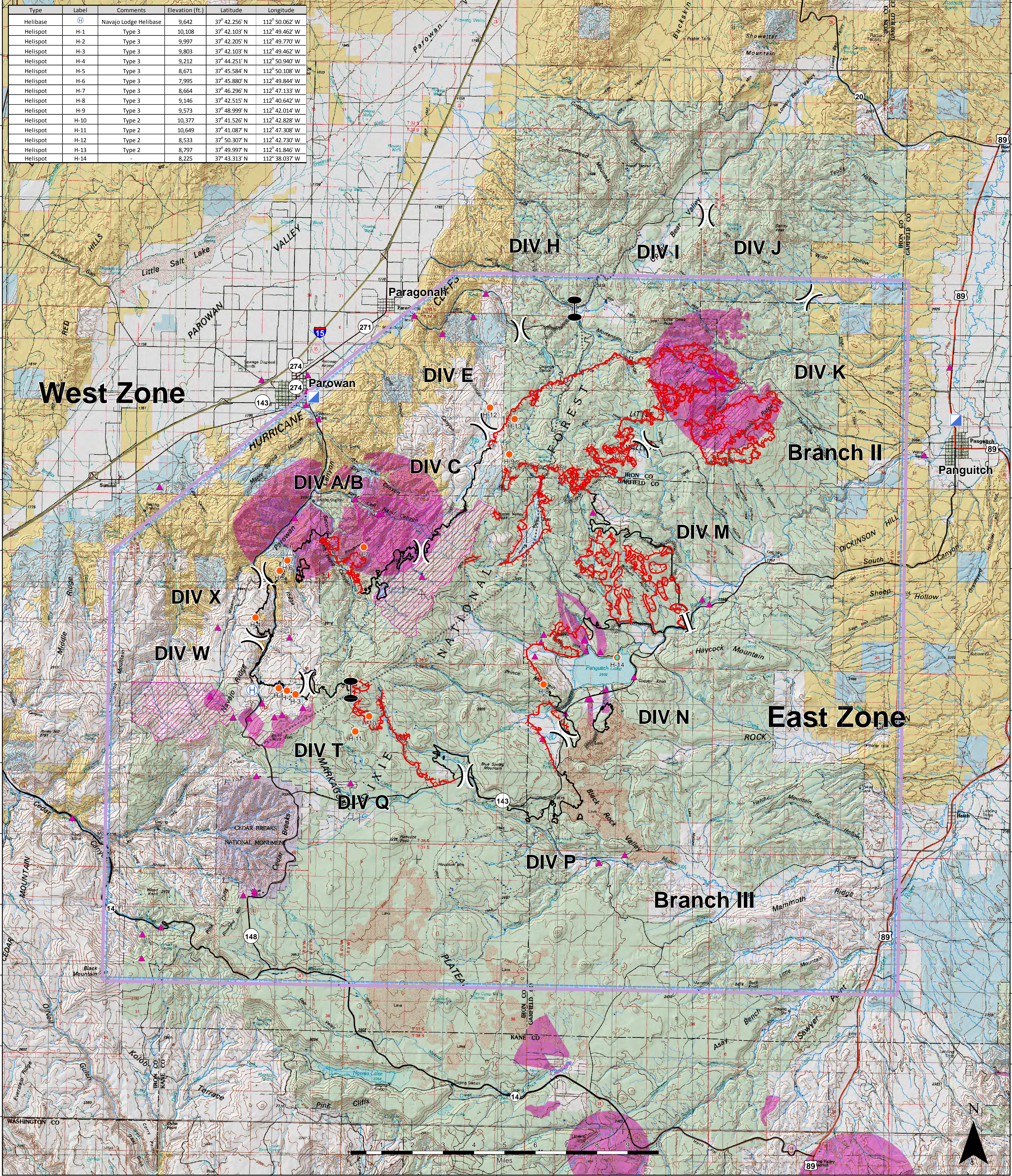


Type	Label	Comments	Elevation (ft.)	Latitude	Longitude
Helibase	H	Navajo Lodge Helibase	9,642	37° 42.256' N	112° 50.062' W
Helispot	H-1	Type 3	10,108	37° 42.103' N	112° 49.462' W
Helispot	H-2	Type 3	9,997	37° 42.205' N	112° 49.770' W
Helispot	H-3	Type 3	9,803	37° 42.103' N	112° 49.462' W
Helispot	H-4	Type 3	9,212	37° 44.251' N	112° 50.940' W
Helispot	H-5	Type 3	8,671	37° 45.584' N	112° 50.108' W
Helispot	H-6	Type 3	7,995	37° 45.880' N	112° 49.844' W
Helispot	H-7	Type 3	8,664	37° 46.296' N	112° 47.133' W
Helispot	H-8	Type 3	9,146	37° 42.515' N	112° 40.642' W
Helispot	H-9	Type 3	9,573	37° 48.999' N	112° 42.014' W
Helispot	H-10	Type 2	10,377	37° 41.526' N	112° 42.828' W
Helispot	H-11	Type 2	10,649	37° 41.087' N	112° 47.308' W
Helispot	H-12	Type 2	8,533	37° 50.307' N	112° 42.730' W
Helispot	H-13	Type 2	8,797	37° 49.997' N	112° 41.846' W
Helispot	H-14	-	8,225	37° 43.313' N	112° 38.037' W



**AIR OPS**  
**BRIANHEAD - WEST ZONE**  
**59,956 ACRES**  
**UT-SWS-000218**  
**6/30/2017 0600 HRS**  
 IR IMAGERY FLOWN 6/30 @ 0102 HRS

TFR	Intermittent Streams	Uncontrolled Fire Edge	Division Break	Helibase	National Forest	National Park Service
Drinking Water Sources	Perennial Streams	Completed Line	Branch Break	Helispot	Bureau of Land Management	State
Municipal Watersheds	Springs	Completed Dozer Line	Zone Break	Sling Site	Private	
Drinking Water Surface Protection Zones				Incident Command Post		

