

OPS MAP

BRIANHEAD - WEST ZONE

59,956 ACRES

UT-SWS-000218

6/30/2017 DAY

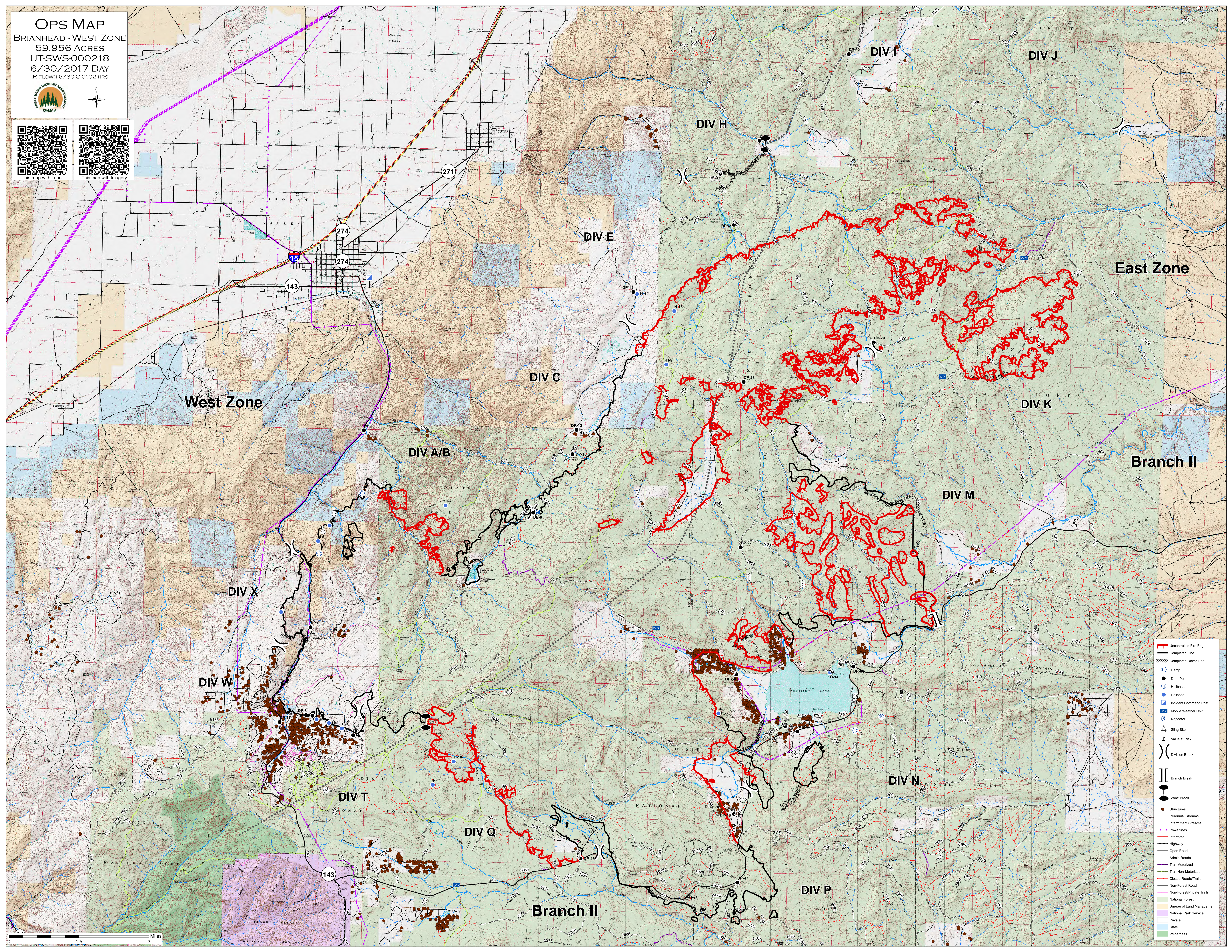
IR FLOWN 6/30 @ 0102 HRS



This map with Topo



This map with Imagery



West Zone

East Zone

Branch II

DIV C

DIV H

DIV E

DIV I

DIV J

DIV K

DIV M

DIV X

DIV W

DIV T

DIV Q

DIV N

DIV P

Branch II

- Uncontrolled Fire Edge
- Completed Line
- Completed Dozer Line
- Camp
- Drop Point
- Helibase
- Incident Command Post
- Mobile Weather Unit
- Repeater
- Sling Site
- Value at Risk
- Division Break
- Branch Break
- Zone Break
- Structures
- Perennial Streams
- Intermittent Streams
- Powerlines
- Interstate
- Highway
- Open Roads
- Admin Roads
- Trail Motorized
- Trail Non-Motorized
- Closed Roads/Trails
- Non-Forest Road
- Non-Forest/Private Trails
- National Forest
- Bureau of Land Management
- National Park Service
- Private
- State
- Wilderness

0 1.5 3 Miles